



2024

# ANNUAL REPORT

South Essex Arts Association



Leamington Arts Centre  
Create. Sustain. Celebrate.

# Table of Contents

3	About the LAC
4	Mission Statement, Values & Vision Statement
5	Message from the Chair: Michael Mastronardi
6	Message from the Director/Curator: Chad Riley
10	Board of Directors, Staff & Volunteers
11	Canada Summer Jobs
12	Volunteer Program
13	Corporate Sponsors & Partners
14	Charles Anthony Paginton
15	Sponsorship by Cleveland-Cliffs Inc
16	Charitable Gaming with Chances Gaming Lounge
17	Membership
18	Exhibitions
28	Collections
29	New Acquisitions
32	Events & Programs
33	Mill St. Markets
35	Arts @ the Marina
37	En Plein Air Patio
39	A Signature Christmas
40	Education Program Report: Andrea Niven, Instructor
41	Education Programs
43	Market Place Artist Market, Café & Bar
44	Art Supply Shop
45	LAC Accolades
46	Visitor Statistics
47	Staff Accolades
48	Training & Development
49	Appraisal & Evaluation Services
50	Venue Rentals
51	Office Rentals
52	Financial Statements
64	Independent Practitioner's Review Engagement Report by HMD Accountants



LAC front entrance, 2024

## about the LAC

The Leamington Arts Centre (LAC) is a public, not-for-profit arts centre with a focus on exhibiting visual arts and developing arts and culture programming.

The LAC was established as the South Essex Arts Association in 1971 with the mandate to create, sustain and celebrate the arts. Over the years, the LAC has developed into a cultural pillar for uptown Leamington and a regional arts and culture destination. Supported by the Municipality of Leamington, donors and its members, LAC is a 10,000 square foot facility comprised of three exhibition spaces, a market place artist market, café and wine bar, an art supply store, an education studio and meeting spaces.

The LAC is an award-winning organization known for its wide range of activities and emphasis on community and local programming alongside ancillary events. The LAC presents a changing calendar of up to 30 diverse exhibitions each year and is home to the notable Henry Collection and the LAC permanent collection, collectively comprised of over 600 Canadian, international, historical, and contemporary works of art.

Distinguished for offering a wide range of local programming, the LAC is committed to facilitating access and stimulating the appreciation and understanding for visual arts and relevant cultural topics.



## **MISSION STATEMENT**

The South Essex Arts Association is dedicated to creating and sustaining a celebration of the human spirit through the nurturing of the arts within our community.

---

## **VALUES & VISION STATEMENT**

The South Essex Arts Association, in partnership with the various art mediums and other disciplines within the arts culture, promotes, fosters and stimulates the appreciation of the arts. Through artistic events and exhibitions with a special focus on the work of local artisans, SEAA assists in preserving all forms of art within the community.

# Message from the Chair

## Michael Mastronardi



Once again, as Chair of the Board of Directors of the South Essex Arts Association / Leamington Arts Center (LAC) for the past year, I am very pleased, honoured and humbled to be including my “Message from the Chair” in this 2024 Edition of the Annual Report.

The year 2024 was extremely invigorating and exciting in continuing to have provided a full slate of cultural events, exhibits, educational and recreational art classes and activities, for which our dedicated Staff, Board Members and Volunteers worked tirelessly in doing so, although not always without challenges. Having said that, it was so worth it, evidenced by all the compliments and support received from the community near and far and from the enjoyment that was witnessed by all who attended and participated in the events and took in the exhibits all year long. After all, who couldn't wear a smile on their face and express their feelings through great conversation, laughter, food, song and dancing in the street, while attending our showcase events – the annual Mill Street Markets (with 4 being held in 2024 in June, July, August and September) and Arts at the Marina. For the first time Arts at the Marina was moved from the Canada Day weekend to a later weekend in July and was extremely successful.

Of course, at the heart of all the excitement, are the Artists, Crafts People and Vendors who make this all possible, along with the ongoing support of the Municipality of Leamington Council and Administration (Celebrating Leamington's 150th Birthday in 2024) and the dedication and knowledge of our Director, Chad Riley.

And our ongoing collaboration and partnership with the Leamington Bank Theater, is very unique, special and successful in combining and providing two different aspects of the Arts Culture.

Our remodeled Art Supplies Store within the LAC, is very successful and very much appreciated and utilized by many artists in Windsor/Essex, Chatham/Kent and beyond. A valuable resource and shining gem!

Lastly, we initiated two new ventures in 2024. Our new summer outdoor patio weekends with food, beverages and live entertainment and our first ever sponsored Plein Air (outdoor) painting competition to capture the essence of Leamington, were both hugely popular and successful.

The Leamington Arts Center has even bigger plans for 2025 and welcomes everyone back to take it all in!!

Thank You,  
Michael Mastronardi  
Chair

# Message from the Director/Curator

## Chad Riley



I would like to begin this year's message by acknowledging the tremendous community support the LAC has backing it. As this report indicates, from the list of programs and the financial statements, the public support stands out the most: the dedicated volunteer Board of Directors who help to not only guide the organization but give so much time and energy to major fundraising events like Arts @ the Marina and the Mill St. Markets. The encouragement and confidence they continue to entrust in myself, and our team – this is how the LAC is able to remain relevant, resilient and a vital part of the arts and culture in our vibrant community.

Our staff, Abby Thiessen, Program & Development Coordinator, who just completed her first year with the LAC, is not only a helpful and bright friendly face to visitors, but a dependable team player providing instrumental support to myself and our programs. Kennedy Lojewski, new to the organization but with a passion for community work and the literary arts, is a welcome addition providing support in a wide variety of areas as our Visitor Services & Gallery Attendant.

Our regular volunteer, admin helper and docent, Sally LePla has been with us for over 5 years now, coming in weekly, sharing her energy and enthusiasm. I would be remiss if I did not mention all our invaluable members, donors, sponsors, visitors, and countless other volunteers, who support the LAC in doing what we do - and of course, the artists who give the brick and mortar of our facility colour and bring life to our programs and community.

It is because of all these great people that the LAC continues to thrive and that I have the honour of sharing this annual report of accomplishments today.

### **Exhibitions, Displays & Events**

The 2024 season delivered 28 different exhibition and displays.

The 26th annual Juried Student Art Show was by far the largest exhibition of the year once again with an astonishing 440 works by 243 students from 10 secondary schools across Essex-County. This exhibit continues to thrive due to the interest of students and teachers along with the sponsorship of the Rotary Club of Leamington and the Kiwanis Club of Leamington granting \$2,000 in cash prizes and free participation for all students.

The 7th annual WFCU Painting Competition + Exhibit also saw an increased response with 80 works from artists, in 13 different cities and towns from across the region. Local artists were supported with \$1,200 in prize money by sponsor WFCU Credit Union.

A notable new exhibition was the Leamington En Plein Air Painting Competition. This exhibition's focus was to showcase the beauty within the Leamington and Point Pelee district and celebrate the joy and impressionistic inspiration in full view when painting in the open air. The competition awarded \$1,000 in cash prizes and was a such a great success that

it will now be an annual exhibition sponsored by the WFCU Credit Union in 2025.

Another significant highlight of the year was Arts @ the Marina; this major fundraiser celebrated an incredible 30th anniversary, making it one of the region's oldest shows of its type. Since 2023's revamp of the arts and crafts show it's realized a significant jump with a 40% increase in the number of vendors which held for 2024's event. The weather for this event was perfect, and the LAC realized an increase in profits from the previous year due to an increase in visitor donations at the entrances. Another notable change which proved to be for the best, was moving the event from the Canada Day weekend to the last weekend in July. This move created less vendor conflict with other special long-weekend events, increased the number of local visitors who were not on vacation during this new weekend, less fish flies to contend with, less boater and marina traffic to compete with, and reduced expenses by avoiding a statutory holiday.

With the support of the Municipality of Leamington, the Uptown Leamington BIA, and in partnership with the Bank Theatre, the LAC once again was host of the popular Mill St. Markets. In 2024, four very successful markets were delivered, attracting over 3,000 visitors and approximately 45+ vendors to each market. Additions and enhancements for 2024 included street performers, busker acts, and circus play for youth.

At the 2024 Annual General Meeting the LAC was privileged to host guest speaker Chief Mary Duckworth of Caldwell First Nation, accompanied by Michelle Letner who displayed her native arts and utilitarian crafts. Nakadee and Kelly Kivoshk also added to the evening with traditional performance drumming. The presentation by Chief Duckworth was engaging and enlightening, as she spoke to the history and future visions of Caldwell.

### **Grants, Fundraising & Public Support**

In 2024 the LAC received an incredible gift of \$100,000 from the estate of Charles Anthony Paginton, son of the notable Canadian En Plein Air artist, George Paginton who worked with the Group of Seven. In 2018, Mr. Paginton and his wife Roswita came from Toronto to the LAC. Impressed, they donated nine works by George Paginton to the LAC collection with a value of approximately \$33,000.

The monetary donation was invested in a GIC with plans to use it in 2025 to compensate exhibiting artists the professional service rate set forth by CARFAC. The exhibition schedule was completely re-worked for 2025 in consideration of this new model with the intentions of then strategically positioning the LAC to be eligible to pursue an Ontario Arts Council operating grant at the next open cycle for new gallery applications.

Credit goes to Scott Livingston, artist, teacher and board member, who secured a \$15,000 sponsorship and the naming of the large gallery from Cleveland-Cliffs. A portion of these funds were used to acquire much needed new iMac computers for the offices, while the remainder of the funds will help to offset operating and programming expenses for the space.

The Municipality of Leamington continues to support the LAC with a Community Partner grant equating to 14% of the revenue in 2024, in addition to the use of the facility and a municipally managed budget for repairs. It is through the generosity and support of the municipality that the LAC is afforded a home for the arts and culture.

A very promising source of new revenue was established at the end of 2024 when the LAC was called up from the Charitable Gaming wait list with Chances Gaming Lounge. With a group of volunteers working bingo sessions, the LAC secured an additional \$1,600 per 2.5-hour assignment in November and December. These funds are eligible to be used for capital operating expenses and select programming expenses. This new source of fundraising revenue positions the LAC to earn an extra \$36,000+ in 2025 with the commitment of its volunteers.

Additional grants included approximately \$11,000 from Canada Summer Jobs, 50/50 online lotteries and a CRAVE Family Grill & Pub fundraiser which also contributed to a total of \$71,000 in grants and fundraising dollars for the year.

Membership was strong, generating over \$7,000 in revenue which is nearly double from the previous year, and visitor admission generated an additional \$2,500. In total, over \$141,000 was generated by way of public support in 2024. A list of our community supporters, partners and sponsors can be found in the annual report. Through the generosity of these individuals and corporations, the LAC continues to make a meaningful impact in the lives of residents and tourists.

As highlighted in this report, the LAC also received many in-kind donations and gifts of art to its collection, as both asset investments and for public education and interest.

Each and every donation makes a difference, and the LAC is indebted to the public for its remarkable support.

## **Education & Learning**

At the core of the LAC programming are the education programs, where the exploration and development of the human spirit begins, with young artists, and adults continuing to learn and grow.

In 2024, board member and primary instructor Andrea Niven returned to the University of Windsor to pursue a Bachelor of Fine Arts degree to compliment her years of teaching and working in the arts. From the second-floor education studio a wide variety of programs for youth and adults were still delivered in 2024, from acrylic painting, Sip N' Paint Nights, Family Craft Nights, summer camps, artist talks and more. From a financial perspective, these programs also generated over \$8,000 in revenue for the organization which help sustain all programs and services while fulfilling the organization's mission to create, sustain and celebrate the arts.

## **Facility & Rentals**

An exciting addition for 2024 was the launch of the new En Plein Air Patio. With the support of the Tourism Recovery grant, the new patio was completed in 2023 and used at each of the Mill St. Market throughout the summer. Expanded use and regular activation of the space took place July 3 through August 25, 2024, first with the Mexican Village event on Mill St., then with the Leamington 150 Car Show, followed by regular patio weekends with live local music performers, special artisan cocktails, drink specials, a partnership with Top Dog brewery, games and activities.

At the end of the year the decision was made to close the Market Place members consignment shop to make a new gallery space primarily to display works from the

collection, while offering other opportunities for artists' displays. The change also entailed moving the bar from the space and renovating the main floor kitchenette to become strictly a bar. Throughout the Holiday shutdown, renovations took place and in 2025 the new and improved bar opened and was very well received by the public.

To continue to help offset facility expenses, the community meeting space continued to be rented regularly after-hours by community groups. Office space on the second floor continued to be rented to Caldwell First Nation and the Uptown Leamington BIA.

During the year, the LAC also continued to host private venue rentals for showers and other special events bringing in new patrons and additional revenue. For 2024 total facility rentals contributed to approximately 13% of the revenue for the year. In 2025 it is projected increase by another 2-3% as some rental rates increased and the facility is becoming more utilized each year.

### **In Summary**

The LAC touched over 32,000 lives in 2024 – 13,000 visitors entered the gallery, over 12,000 came out the Mill St. Markets, and over 7,000 attended Arts @ the Marina on one weekend.

Financially, 2024 had a \$112,000 increase in revenue over 2023 and realized over \$435,000 in total revenue while remaining in the black.

The year was marked a success due to the tremendous public support received. It is for these reasons and many more that the LAC was again nominated by the public as a finalist for the 8th year in a row as Best Art Gallery in the Tourism Windsor-Essex Pelee Island's Best of Windsor-Essex annual awards.

I am privileged to continue to grow with and serve as Director and Curator of the Leamington Arts Centre, and I am honoured to present the 2024 annual report and all the meaningful work the community has helped us to provide.



Chad Riley, MFA  
Director/Curator

# LEAMINGTON ARTS CENTRE



## board of director & staff



SEAA/LAC Board of Directors, 2024

### **CHAIR**

Mike Mastronardi

### **VICE CHAIR**

Jan Bateman

### **TREASURER**

Katherine Albuquerque

### **SECRETARY**

Jill Nicholson

### **EX-OFFICIO**

Tim Wilkinson

Mike Thibodeau, Past Chair

Scott Livingstone

Andrea Niven

Todd Stahl

Dennis Edmonson, Guest Advisor

### **DIRECTOR/CURATOR**

Chad Riley

### **PROGRAM + DEVELOPMENT COORDINATOR**

Abigail Thiessen

### **VISITOR SERVICES + GALLERY ATTENDANT**

Allison Ware (Dec 2023 – June 2024)

Kennedy Lojewski (September 2024 – present)

### **SPECIAL EVENTS COORDINATOR**

Allison Ware (July 2024)

Josh Myers (July 2024 – August 2024)

### **MIXOLOGIST**

Kailey Dike (July 2024 – August 2024)



# CANADA summer jobs

Visitors enjoy drinks and colouring pages on the patio, July 2024



Each year for the past several years the LAC has been successful in obtaining funding through the **Canada Summer Jobs** Program for employees under the age of 30. Job placements typically range 6-12 weeks. In 2024 the LAC was successful in receiving funding for two additional staff for 8 weeks. These extra staff allowed the gallery visitor hours to increase by 20 additional hours per week with the gallery being open late on Fridays and Saturdays and open on Sundays for the months of July and August during peak tourism season.

### **Special Events Coordinator: Allison Ware/Josh Myers**

The Special Events Coordinator is passionate art enthusiast who thrives in a creative and community-based work environment. The Special Events Coordinator assists to cultivate summer events, activities and programs by supporting the LAC's mission to create, sustain and celebrate the arts. They are responsible for supporting day-to-day operations and a culture of philanthropy with donors, members, and the community, the Program Coordinator will aid to enrich experiences and elevate the organization.

### **Mixologist: Kailey Dike**

The Mixologist is a vibrant and energetic personality to provide bartending services combined with a mixology experience for visitors. The Mixologist oversees the patio service, and indoor drink services, with a focus on developing specialized cocktail events and programs to attract visitors. The mixologist assists with inventory, accurately perform point of sale transactions and assist with marketing and advertising. The Mixologist is a professional, warm, friendly, and informative personality that enhances the visitor experiences, member and donor relations.

# Volunteer Program



The LAC is a member of Volunteer Canada and has adopted their code. We are committed to demonstrating our value in volunteerism.

**Who can volunteer?** Everyone! Volunteers at the LAC are as diverse as the art we display. There are many unique opportunities to fit your interests and schedule. Knowledge of art is not necessary, just an appreciation and the enthusiasm to share it with others.

## **Docent + Administrative Assistant**

The Docent + Administrative Assistant will welcome and engage patrons and help them connect with the art and have a memorable visit; inform patrons of current exhibits, upcoming events, classes and LAC activities of interest; conduct tours of the gallery for groups and schools and utilize techniques of dialogue and inquiry. The docent encourages patrons to participate, ask questions and become informed and enthused about the LAC, its exhibits and activities. The Administrative Assistant, will help with administrative and office duties, fundraising, and marketing campaigns, mailings, data entry, and record keeping. Other clerical work such as answering the phones, directing inquiries, taking messages and other basic office related tasks could also be included in their responsibilities.

## **Facilities & Events Assistant**

The Facility + Events Assistant will assist with preparation, coordinating and set up of programs and activities at the LAC, including exhibit installation and de-installation, artist receptions, LAC private rental events and LAC art classes. Volunteers in this position may also assist with facility maintenance.

## **A special thank you to our regular weekly volunteer, Sally LePla, for her ongoing dedication and support.**

Thank you to all of those who volunteered with us throughout the year:

Abigail Thiessen	Doug Wales	Jill Nicholson	Lisa S	Rayeven Sapdoy
Allison Ware	Ella Riley	Jill Wales	Margeret Webie	Sarah Mulaner
Andrea Lalonde	Erin MacDonald	Joan Cocks	Marissa Malas	Scott Livingstone
Andrea Niven	Everina Byamungu	Jonathan Fehr	Melissa Besette	Sharon Suitor
Anne Frazer	Faith Alkinari	Josh Myers	Mike Mastronardi	Shashanah MacDonald
Backhous Gebrail	Fred Klassen	Justin Wiens	Mike Mazloum	Sherry Stahl
Bridget Wales	Gabriela R. Zelaya	Kailey Dick	Mike Thidobea	Tami St. John
Cessiah Compean	Irene Campbell	Katherine Albuquerque	Moneir Ali	Terra Koop
Chad Riley	Jacey Foster	Kim Klassen	Nancy Pantoja	Tim Wilkinson
Chantal Sendeak	Jandel Jr Reyes	Kyle Gould	Nettie Dyck	Tina Wolfe
Chris Close	Jane Bateman	Laura Wilkinson	Nettie Guenther	Todd Stahl
Claire Dyck	Jennifer Gould	Lesley Heinz	Nick Preyde	Wendy Bateman
Denis Edmonson	Jessica Martens	Linda Scrub	Noah Riley	
Diane Riley	Jessie Riley	Lindsey Kivell	Paul Bateman	



CORPERATE  
sponsors /  
partners

LAC Director/Curator Chad Riley & Crave Family Grill Owner Chad Robinson

The South Essex Arts Association/ Leamington Arts Centre seeks sponsorships and partnerships from corporations and other organizations to support vital programming such as exhibitions, events, and education programs. The South Essex Arts Association wishes to acknowledge and recognize the generosity of new and renewing sponsors whose gifts were received in 2024.

We would like to extend special thanks to the Pagington's for their unrestricted monetary donation, the Cleveland-Cliffs Inc. for their generous sponsorship of the LAC's main gallery, now named the Cleveland-Cliffs Gallery, to Crave Family Grill for their support through their LAC Fundraiser Day in February 2024, and to UE Enclosures for their sponsorship of the Elements and Principals of Design youth classes held in March which were provided free of cost to participants.

- Access Storage
- Albuquerque Accounting
- Art Windsor Essex
- ArtBuild Ontario
- Artcite Inc.
- Arts Council Windsor & Region
- Caldwell First Nation
- Canadian Museum Association
- Carl's Plants & Produce
- Cleveland-Cliffs Inc.
- Chances Gaming Lounge
- Cowlick Studios
- Crave Family Gill & Pub
- École Secondaire Catholique L'Essor
- Essex District High School
- Essex Free Press
- Festival Tents & Party Rentals
- Framing by Anna
- Honey Family Foundation
- Kingsville District High School
- Kiwanis Club of Leamington
- KLB Consulting

- Lakeside Bakery and Café
- Leamington District Chamber of Commerce
- Leamington District Secondary School
- Leamington Lions Club
- Libro Credit Union
- Lore Computers
- Marcovecchio Construction
- MC Business Solutions
- Mexican Consulate
- Mix 96.7
- Mucci Farms
- Municipality of Leamington
- North Star High School
- Ontario Arts Council
- Ontario Association of Art Galleries
- Riverside Secondary School
- Rotary Club of Leamington
- Royal Bank of Canada
- Sandwich Secondary School
- Security One
- Shooters Photography Club

- South Essex Community Council
- Southpoint Publishing
- Speedprint Ltd.
- St. Thomas of Villanova High School
- TechSoup Canada
- Tecumseh Vista Academy
- The Bank Theatre
- Top Dog Brewing Co.
- Tourism Windsor Essex & Pelee Island
- UE Enclosures
- UMI Christian High School
- University of Windsor . SoCA
- Uptown Leamington BIA
- Walkerville Collegiate Institute
- WFCU Credit Union
- Windsor Endowment for the Arts
- Windsor Essex Community Foundation
- Windsor's Country FM
- WindsorEats



## A GIFT from the Paginton's

LAC Director/Curator Chad Riley with Tony Paginton & Poswita Busskamp upon their generous donation of 9 works to the lac permanent collection by Canadian plein-air landscape painter, George Paginton.

The LAC would like to extend a very special thank you to the late Mr. Charles Anthony 'Tony' Paginton for the very generous gift to the arts centre.

In 2018, Mr. Tony Paginton and his wife Mrs. Roswita Busskamp donated to the LAC collection nine (9) works by Paginton's father, Canadian en plein air painter, George Paginton.

Upon his passing in 2023, Mr. Tony Paginton left the LAC an unrestricted donation of \$100,000.

These funds will be invested towards future exhibitions and displays, and to support local artists by way of remuneration for exhibitions and professional services. By compensating and financially supporting artists, the aim is to leverage the funds from the Paginton's to better position the LAC to receive and a public art galleries operating grant from the Ontario Arts Council in coming years.



# SPONSORSHIP by Cleveland- Cliffs Inc.

Cleveland-Cliffs Gallery with the Stomping Grounds exhibition on display in September 2024

Leamington Arts Centre was very grateful to Cleveland-Cliffs Tooling & Stamping Holdings Inc. for their sponsoring and naming of the main gallery on the first floor of the LAC in September of 2024.

Cleveland-Cliffs Tooling & Stamping Holdings Inc. very generously donated \$15,000 to the LAC in summer of 2024. In respect of this sponsorship, the LAC is happy to announce the naming of the main gallery at the arts centre as the Cleveland-Cliffs Gallery.

"We at Cleveland-Cliffs care deeply about the communities in which we operate, and where our employees live and work. Our goal is to be a responsible corporate citizen that acts as a partner in solving community challenges and helping our communities thrive. We believe this sponsorship is part of Cleveland-Cliffs' ongoing commitment to fostering healthy, vibrant communities."

- Krista Redling, Director of Human Resources at Cleveland-Cliffs Inc.

The new Cleveland-Cliffs Gallery is currently holding Stomping Grounds: Annual Regional Juried Exhibition. This exhibition is an opportunity for community involvement as it invites artists from throughout southern Ontario and northern Michigan to submit artworks of all types and themes to be juried into a non-themed show.



# charitable gaming with CHANCES

Chances Gaming Lounge & Bistro

In November of 2024, The Leamington Arts Centre began working with Chances Gaming Lounge & Bistro in Leamington and the Ontario Charitable Gaming Association to raise funds for the gallery and its programming.

Twice a month two volunteers from the LAC go to the the gaming lounge donning LAC uniforms to assist with customer service and the bingo rounds. Here, volunteers have the opportunity to share information about their charitable organization, the LAC, with a new demographic and promote programs happening at the arts centre. Most beneficially though, for having volunteers help at the gaming lounge, Chance's Gaming Lounge donates a portion of the proceeds to the LAC.





Membership Card, 2024

The South Essex Arts Association/ Leamington Arts Centre seeks donations from individuals as members and donors to support vital programming such as exhibitions, events and education programs.

**There were 98 members in 2024, listed are those who wished to be acknowledged:**

**HONORARY**

Marg Ross

**LIFETIME MEMBERS**

Dr. and Mrs. Kelley  
George Alles  
Harold Burton  
Harry Enns  
Ken Friesen  
Pat O'Heron  
Penny Belluz  
Phyllis Nelson  
Walter McGregor  
Joel Westlake

**LEAMINGTON ARTS PASS**

Andrea Niven  
Jan Bateman  
Marcy Fogal  
Nancy Whittle  
Paul & Dominique  
Dossantos-Yssennagger

**YOUTH**

Maximillion Ingratta  
Sofia Ingratta

**INDIVIDUAL (\$35)**

Ann Ducharme  
Carly Verheyen  
Carolyn Hardy  
Christina Gaspard  
Christy Lister  
Darlene Martens  
Diane M Sullivan  
Diego Gonzalez  
Elena Pilioci  
Elizabeth Anne Hebert  
Glen Donaldson  
Gloria Micleli  
Jamie Tellier  
Janal Koenig  
John David Tofflemire  
Jonathan Brown  
Juan Domingo Abarca Sacas  
Justin Gignac  
Katherine Roth  
Lauren Janzen  
Laurie Case  
Leamington District Chamber  
of Commerce  
Lynda Moffat

Marena Woodsit  
Neils Peter Olsen  
Permanent Pallets  
Renee Pare  
Rosalyn Raymont  
Sarah Rupert  
Scott J. Livingstone  
Sharon Suitor  
Sherrie Piens  
Tony Khoan  
Tracy Aartery  
Wallie Pizzuti

**FAMILY (\$60)**

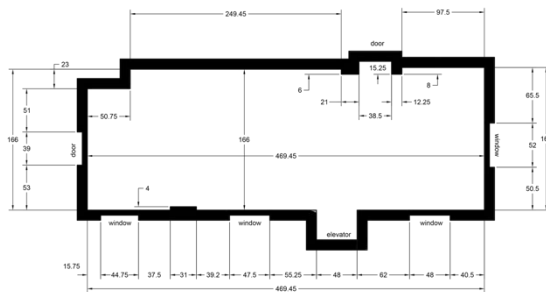
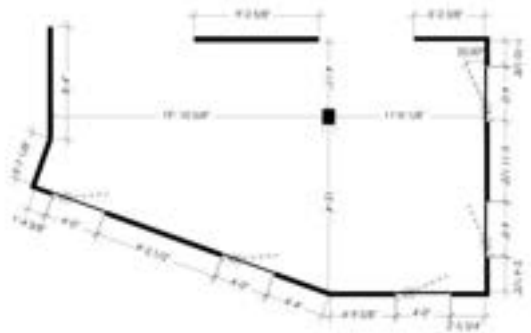
Anacleto D' Alessandro  
Charlsie Morrow  
Heather Niven  
Lisa Traina Quin  
Valerie Kauffman

# Exhibitions

The LAC is a state-of-the-art gallery which offers three exhibition spaces with over 300 linear feet of continuous wall space and 3000sq/ft of floor space, a gift shop, art classes, workshops, and meeting spaces. The LAC is one of the area's paramount places to view modern art with an emphasis on local and aspiring artists and artisans.

The LAC takes great pride in the exhibits we feature and the artists we select to showcase. Each season, from January through December, the LAC offers up to 30 different exhibits. Exhibitions typically change each month so there is always something new to see from solo artist exhibits, private and gallery collections, themed group exhibits, community clubs, school exhibits, and more.

Admission to the LAC is \$2, and free for LAC Members, youth under 12, artists on display, and support workers. Donations are always appreciated. Be sure to join us for new exhibit opening receptions where you can meet the artists, view their works, meet new people, network and collaborate with other creative minds, and share in the enjoyment of the arts. Snacks and a variety of cocktails are also served from the bar and café.





*It's Personal (The Journey)*, Toản Khoán, March 2024

January 4 – January 27

**8x10: 2024 Amateur Photography Contest**

The LAC is proud to present the 8x10 amateur photography contest. This annual exhibit features nearly 100 striking photographs in the categories of Mother Nature, Photomanipulation, and Architecture.

Sponsored by: Speedprint & Framing by Anna

January 30 – February 24

**U24: Members' Show + Sale**

The annual members exhibition and sale celebrates the strength, vitality, creativity and wealth of talent found within the Leamington Arts Centre (LAC)/South Essex Arts Association (SEAA). Each year, the diverse and outstanding works by our members creates an exciting and engaging exhibition whereby artists are able to showcase, share and sell their work. The exhibition creates a platform for artists to network with peers to develop their skills and experiences and we thank all those contributing artists. Featuring Artists: Anastasia Adams, Scott Livingstone, Courtney Gregorian, Irina Teske, Allison McLister, Norm Stangl, Martyn Wells, Sally LePla, Nancy Cassels, Sharon Suito, Rosalyn Raymont, James Hunt, Sandra Ellis, Vera Graham, Helen Lavin, Mike Ondrovčík, Sarah Shehadeh, Michaela Lucio, and Barbra Alkemade.

February 27 – March 23

**IT'S PERSONAL (THE JOURNEY): Toản Khoán**

Toản Khoán was born in Saigon, Vietnam and was a student at the National College of Fine Arts from 1972-1977. This exhibition explored Khoán's deeply personal journey, touching on his experience of post-war societal collapses, a harrowing journey over seas, familial separation and reunification, and working in factories to support his family, which emptied his mind of the any traces of art. Khoán went through a lot of trying, frustrating, and struggling times before he found his way back to doing what he most enjoys; Creating. It is his hope that his works express and carry through his thoughts and sympathies for people who have suffered and have been victimized by others.



# 2024 exhibitions: CLEVELAND CLIFFS gallery

26<sup>th</sup> Annual Juried Student Art Show, April 2024

March 26 – April 20

### **JSAS 26: Juried Student Art Show**

This exhibition spanned across two gallery spaces; the Art Alive! Gallery and the Cleveland-Cliffs Gallery. Generously sponsored by the Rotary Club of Leamington and the Kiwanis Club, the Leamington Arts Centre (LAC) presents the 2024 26th Annual Juried Student Art Show. This exhibition features over 400 works (yes, 400!) of the region's best artworks by Essex County secondary students in the categories of Painting, Drawing, 3D/Sculpture, Photography, Video/Film, Print Making, Mixed Media, and New Media Art. Winners took home over \$2000 in cash prizes including a Future Artist Award and a People's Choice Award.

April 23 - May 18

### **WFCU Credit Union Painting Competition**

This exhibition focused on highlighting and celebrating the arts in our region, and to offer financial support and an audience for artists. Andrea Jenkins, Ann Roth, Ashley Hastings, Barbara Alkemade, Beth Kyle, Cara A., Cosima Pohanka, Darlene Girard, David Fife, Douglas Bedard, Elaine Guitar, Gloria Miceli, Heather Georgiou, Helen Lavin, Irina Teske, Jessica Lembke, Joseph Butler, Julie Needs, Kelly Hopkins, Kelly Van De Bovenkamp, Layne van Loo, Liuda Vindasius Reeb, Maxwell Johnson, Meghan Peeters, Michaela Lucio, Morgyn Lau, Nakaa Onica, Natali Bahoshy, Ruth A. Driedger, Sally LePla, Sandra Ellis, Scott Livingstone, Sharon Sutor, and Toni Wells.

May 21 – June 15

### **IN FLUX: University of Windsor SoCA MFA Exhibition**

In Flux featured the work of MFA students Emma Feliciano, Daniela Gaie and Niku Koochak. This group show explored themes of personal, societal, and displacement-related changes through a variety of interdisciplinary approaches. The artists use vibrant colours, abstraction of text and repetitive patterns to represent their feelings of ephemerality and constant change.

June 18 – July 14

### **Leamington En Plein Air Painting Competition**

The Leamington En Plein Air Painting Competition is an incredible opportunity for all artists to present their En Plein Air paintings, completed during competition days, at the LAC for a chance to win cash prizes. The exhibition's focus was to showcase the beauty within the Leamington and Point Pelee district and celebrate the joy and impressionism in full view when painting in the open air.



2024  
exhibitions:  
CLEVELAND  
CLIFFS gallery

*Out of Control, by the Control Group, August 2024*

July 16 – September 7

**OUT OF CONTROL: Stephen Gibb, Sandie Collins, Judy Chappus, and Rebecca Draisey**

The Control Group are four Windsor artists who had the distinct pleasure of access to the grimy and deliciously untethered environs of the Lebel building in the 1980s and have joined forces to explore and share with each other experiences and discoveries from the past 35 years.

September 10 – November 2

**STOMPING GROUNDS: Annual Regional Juried Exhibition**

Stomping Grounds is a guest curated, cross-region and cross-selection exhibition of juried works. The exhibition's focus is to bring together a broad and diverse collection and new scope of efficacious works to the Leamington Arts Centre. This year's juror was Stephen Gibb.

November 5 – December 21

**A Signature Christmas**

The LAC presents its annual indoor Christmas Arts & Crafts show! This year's show includes fine art, wall and home decor, pottery, comic book cover art, fashion accessories and more... Find the perfect gift for everyone on your list during this month long "gift shop" style exhibition that fills an entire main floor gallery. Thank you to all participating artists and artisans: Catherine Johnson, Sally LaPla, Andrea Niven, Sharon Suito, Alice Welsh Pawttery, Cleto Comics, and Permanent Pallets.



2024  
exhibitions:  
ART ALIVE!  
gallery

*From the Vault: Select Works From the LAC Collection, March 2024*

January 4 – February 10

**THE HENRY COLLECTION: Municipality of Leamington**

The Henry Family travelled the world collecting art and artifacts. The collection includes Canadian and American oil paintings, Chinese porcelain figurines, as well as jade and silver sculptures, reliefs and much more. This prominent collection was gifted to the Municipality of Leamington and is currently in care and possession of the Leamington Arts Centre/ South Essex Arts Association. Select works from the collection are regularly brought into the gallery space for public viewing. Works selected for this exhibit primarily include two-dimensional works in the medium of oil, acrylic and watercolour, with several of them by well-known Canadian and American painters.

February 13 – March 9

**FROM THE VAULT: Select Works from the LAC Collection**

The SEAA/LAC's collection is of great pride amongst its staff, members, and constituents. We take seriously our mission to enrich culture through the collection and preservation of art. Since its founding in 1971, the SEAA/LAC has acquired hundreds of works of art, collecting in the areas of Canadian and international historical and contemporary art. The collection has been built both through donated gifts and considered purchases. Approximately 90% of Gallery acquisitions come from private donors—often dedicated collectors looking for a permanent home for their works where they will be appreciated, cared for, and put on display for others to enjoy. It is because of the generosity of these donors that the SEAA/LAC enjoys the position it holds as a collecting institution. This exhibit featured select works acquired primarily throughout the years with a focus on local paintings.

March 12– April 6

**ART ALIVE! : Don Waffle**

This exhibition showcased Don Waffle's strikingly realistic artwork that brings people to life, in portraits and in their activities.



2024  
exhibitions:  
ART ALIVE!  
gallery

*S.H.E is Healing*, by Suellen Evoy-Oozer, June 2024

March 26 – April 20

**JSAS 26: Juried Student Art Show**

This exhibition spanned across two gallery spaces; the Art Alive! Gallery and the Cleveland-Cliffs Gallery.

Generously sponsored by the Rotary Club of Leamington and the Kiwanis Club, the Leamington Arts Centre (LAC) presents the 2024 26th Annual Juried Student Art Show. This exhibition features over 400 works (yes, 400!) of the region's best artworks by Essex County secondary students in the categories of Painting, Drawing, 3D/Sculpture, Photography, Video/Film, Print Making, Mixed Media, and New Media Art. Winners took home over \$2000 in cash prizes including a Future Artist Award and a People's Choice Award.

May 7 – June 1

**MEMBER'S SHOW & SALE: Shooters, Border City, and Windsor Camera Club**

A multi-club regional member's exhibition of select photography on display and for sale.

June 4 – July 26

**S.H.E. IS HEALING: Suellen Evoy-Oozer**

This exhibition is a four-year community art project resulting in 13 spirit portraits. All nations of women working to heal themselves, their families, and communities through the pandemic and through infinity. Generously sponsored by the Windsor Essex Ontario Health Team.



2024  
exhibitions:  
ART ALIVE!  
gallery

*Guarding the Nest by Douglas Bedard, September 2024*

July 30 – September 21

**GUARDING THE NEST: Douglas Bedard**

"The theme of my exhibition is called 'Guarding the Nest'. The image of my bird comes from one particular past experience as a young boy of 8 years old. I was walking on a hot summer day and noticed a bird laying on the sidewalk. I stopped to ponder what may have happened to this bird, how did it end up on this particular block, in this particular position. An innocence was lost as I realized that this bird was dead. This was a profound moment for me, a connection that has been with me ever since. I saw the bird as a part of nature, and we as people are all a part of nature, connected with everything around us."

"Being a single male provider, a nurturer out of necessity for my three daughters, I have found that it is important to render a gentler and more compassionate side to the understanding of what parenting entails. The different layers of colours used in the colour fields, hopefully, provide an emotional impact, reflecting different time elements, the layers in parenting, the time passing in our lives as moments, days, weeks, years, and decades. It is a continuing aspect of what it is to live, experience, protect, nurture and share."

– Douglas Bedard

September 24 – November 16

**BLOOD TIES: Mike Ondrovic and Laurie Langford**

Family members form our first society, and we learn how to function within it. Whether we remain close or distance ourselves, the push and pull of our first society is strong and we both fight and embrace our Blood Ties for our entire lives. And yet we crave more. We live in societies that have become more connected through social media, yet people report feeling more unfulfilled and isolated. This feeling of isolation drives some people to conduct extensive family research, fuelling a quest to gather more people of their own kind. This exhibition was all about discovery, acknowledgement, acceptance, and pride.

November 19 – December 21

**Annual Benefit Auction**

The Benefit Art Auction is special fundraising event for artists and art collectors to support the LAC by donating works of art. 100% of the proceeds of the auctioned artwork will be used to support the LAC, its community programs and activities.



2024  
HONEY FAMILY  
FOUNDATION  
community gallery  
+ meeting space

*Graydon Dyck: From the LAC Collection, February 2024*

January 4 – February 10

**LEARN: LAC Education Programs Exhibition**

An exhibition celebrated the artwork created by Leamington Arts Centre Education Program students. This exhibit featured the work of individuals who had been registered in any educational programming at the LAC in 2023 and includes both youth and adult programs. All artwork displayed has been produced in class.

February 13 – March 9

**GRAYDON DYCK: From the LAC Collection**

George Graydon Dyck was born in Leamington, ON in 1946 and died in Winnipeg, MB in 2011. Throughout his lifetime, Dyck's work was shown in Toronto, New York, Los Angeles, and Winnipeg. He is best known for painting vintage cars and movie stars. In 1967, he moved to Winnipeg to attend the School of Fine Art at the University of Manitoba where he met his wife, Judith (nee Wolinsky). Over his 45-year career, Dyck completed thousands of paintings and sculptures many of which are now in private and public collections across Canada and the U.S.

This exhibition made possible through the generous gift of Bob Ceh.

March 12 – April 6

**Tiny Art Show**

The Tiny Show celebrates small and intimate works, the little pleasure in life and art. This show is an opportunity for artists to display and sell any artwork under 20" in size in any media.



2024  
HONEY FAMILY  
FOUNDATION  
community gallery  
+ meeting space

*The Far Out Show, June 2024*

April 9 – May 4

**MATTIA LAPP A: From the LAC Collection**

Mattia Lapa (Barraco) is a Leamington resident. She earned her Bachelor of Fine Arts (BFA) degree from the University of Windsor in the early 1990's.

This collection of work is representational of figure studies completed during her training at the University of Windsor under the mentorship of professors Adel Duck, Susan Gold, Tony Doctor, and Joe DeAngelis. These studies were then adapted to the large-scale oil on canvas and board paintings representing the sense of movement, vitality, and beauty of the live models from which they were derived.

These works are part of the South Essex Arts Association/Leamington Arts Centre collection, donated by the artist in October 2014 for the purpose of preservation and display.

May 7 – June 1

**Spring Studio Clear Out**

For this exhibition, artists cleared out their studios to display and sell their work. All works were priced under \$149 for this exhibit, allowing buyers to purchase local works at a great price. Participating artists included Lorraine Johnson, Nancy Cassels, Pavlo Lopata, Sharon Sutor, and Toni Wells.

June 4 – June 29

**The Far Out Show**

This exhibit's focus was to highlight and showcase those offbeat, avant-garde or radical works that make us push the limits of expressionism in contemporary art. Participating artists included Gisele Poisson, Irina Teske, Julianna Zielinski, Kelly Hopkins, Lisa Traina Quin, Maxwell Johnson, Milla Sulja, Nakaa Onica, Suellen Evoy-Oozer, and Toni Wells.



2024  
 HONEY FAMILY  
 FOUNDATION  
 community gallery  
 + meeting space

MIXED, August 2024

July 2 – July 26

**IMAGES OF THE PAST: Leamington Mersea Historical Society**

Photographs and quilts to mark Leamington's 150 anniversary.

July 30 – September 21

**MIXED**

MIXED is an exhibition that seeks to explore the creative expression of mixed media art and the use of non-traditional media. Participating artists included Andrea Niven, Claire Hayes, Gisele Poisson, Jaclyn Abt, Maxwell Johnson, Scott Livingstone, Sharon Sutor, and Willie Flamenco aka Snake-N-Boltz.

September 24 – November 16

**THE WORLD BENATH: Kacie Auffret**

This exhibition focused on the ideas of connection, spirituality, and ocean life. The artist, Kacie Auffret, is interested in merging both your connection to the ocean world and Mother Earth through not only the abstract imaginary but also by using crystals in the works. Through the series of paintings Kacie explored the use of crystals and their meanings by combining the uniqueness of the crystal energy with the intuition of spiritual connection to ocean life. Also on display, were works from Kacie Auffret's *Mystical Creatures* collection, a collection of art that was created around the ideas of connection, spirituality and wildlife.

November 19 – December 21

**THE WORLD AS WE SEE IT: LeyDan Art Studios**

This art show features artworks from the LeyDan Art Studio students and the LeyDan Artists Group. Instructor Leyla Aysel Munteau has been teaching art for more than 20 years. This show exhibited the art and skills of some students who have studied under her mentorship and instruction for more than 10 years and new students who have just started.



collections

*The Henry Collection: Municipality of Leamington, January 2024*

## **The Henry Collection: Historic Art & Artifacts**

The Henry Collection, donated by the Henry Family, is a permanent collection of the Municipality of Leamington and is under the care of the Leamington Arts Centre. The collection features various art and artifacts collected from all over the globe including works from East Asia and North America.

## **LAC Collection: Local and Culturally Significant Artwork**

The SEAA/LAC's collection is of great pride amongst its staff, members, and constituents. We take seriously our mission to enrich culture through the collection and preservation of art. Since its founding in 1971, the SEAA/LAC has acquired hundreds of works of art, collecting in the areas of Canadian and international historical and contemporary art.

The collection has been built both through donated gifts and considered purchases. Approximately 90% of gallery acquisitions come from private donors—often dedicated collectors looking for a permanent home for their works where they will be appreciated, cared for, and put on display for others to enjoy. Artists also donate their work, such as Jeet Aulakh's *Namo Ek Yoge*; 2010 oil on canvas. It is because of the generosity of these donors that the SEAA/LAC enjoys the position it holds as a collecting institution.



View collections online at: [leamingtonartscentre.com/collection](https://leamingtonartscentre.com/collection)

# New Acquisitions: LAC Collection



## **Mother Nature's Renewal [38/70]**

Dorothy Morrison

c. 1982

Print on Paper

*Mother Nature's Renewal* was donated by Jan Batman.



## **First Bluebirds of Spring [225/550]**

Galen Burrell

c. 1991

Print on Paper

*First Blue Birds of Spring* was donated by Elizabeth Scheer.



## **2 Loons with Nest [39/500]**

Kimberly Rose

Print on Paper

*2 Loons with Nest* was donated by Elizabeth Scheer.



## **Common Loon - Edgewater [18/100]**

Kimberly Rose

Print on Paper

*Common Loon - Edgewater* was donated by Elizabeth Scheer.



## **Point Pelle National Park**

Kenn Stubbett

1996

Print on Paper

*Point Pelee National Park* was donated by Elizabeth Scheer.

## New Acquisitions: LAC Collection



### **Preening Pair [718/950]**

Robert Batmen  
c. 1988  
Print on Paper

*Preening Pair* was donated by Elizabeth Scheer.



### **Muskoka Lake – Common Loons [1581/2500]**

Robert Batmen  
c. 1988  
Print on Paper

*Muskoka Lake – Common Loons* was donated by Elizabeth Scheer.



### **At the Cliff – Bobcat [2157/12,500]**

Robert Batmen  
c. 1988  
Print on Paper

*At the Cliff – Bobcat* was donated by Elizabeth Scheer.



### **At the Nest – Secretary Birds [454/950]**

Robert Batmen  
c. 1988  
Print on Paper

*At the Nest – Secretary Birds* was donated by Elizabeth Scheer.



### **Endangered Spaces – Grizzly [1383-4008]**

Robert Batmen  
c. 1988  
Print on Paper

*Endangered Spaces – Grizzly* was donated by Elizabeth Scheer.



### **Reflections**

Colette Defeuille  
Print on Paper

*Reflections* was donated by Colette Maurice.

## New Acquisitions: LAC Collection



### **Bubblem Gum Love**

Douglas Bedard

Acrylic on canvas

*Bubblem Gum Love* was donated by Douglas Bedard.



### **Winter Dream**

Lionel Venne

2003

Mixed media

*Winter Dream* was donated by Toni Wells.



### **Reflection in Ripple**

Neil

2024

Acrylic and plaster on canvas

*Reflection in Ripple* was donated by Indranil Biswas.



### **Untitled**

Harold Burton

Print on Paper

*Untitled* was donated by Jill Nicolson.



# 2024 EVENTS & programs

Annual General Meeting, April 2024

April

**ANNUAL GENERAL MEETING**

April 18  
Come to our AGM and learn about all the LAC accomplished in 2023 and get a peek at our plans for 2024 and beyond! Also enjoy networking and gathering with other LAC supporters and arts enthusiasts.

June

**MILL ST. MARKET**

June 7  
The Mill St. Market is specially curated to serve delectable street food and drinks while you shop for handcrafted arts and crafts lining the modern, reinvented, Mill Street in Leamington.

July

**MILL ST. MARKET**

July 12  
The Mill St. Market is specially curated to serve delectable street food and drinks while you shop for handcrafted arts and crafts lining the modern, reinvented, Mill Street in Leamington.

**ARTS @ THE MARINA**

July 27-28  
This 2-day event held at the scenic lakeside Leamington Municipal/ Rick Atkin Park features dozens of artisans on display, live music, children's activities, food, and refreshments.

August

**MILL ST. MARKET**

August 9  
The Mill St. Market is specially curated to serve delectable street food and drinks while you shop for handcrafted arts and crafts lining the modern, reinvented, Mill Street in Leamington.

September

**MILL ST. MARKET**

September 13  
The Mill St. Market is specially curated to serve delectable street food and drinks while you shop for handcrafted arts and crafts lining the modern, reinvented, Mill Street in Leamington.

December

**A SIGNATURE CHRISTMAS: Indoor artists' market**

Nov 6 – Dec 20  
LAC presents its annual indoor Christmas Arts & Crafts show. Exhibit and sell your work directly inside our beautiful galleries during this month long "gift shop" style exhibition in a warm festive setting.



# MILL ST. market

Mill St. Market, August 2024

The Leamington Arts Centre (LAC), in partnership with the Municipality of Leamington, the Uptown Leamington BIA, and the Bank Theatre, is proud to present Mill St. Market.

Mill St. Markets are specially curated to serve delectable street food and drinks while you shop for handcrafted arts and crafts lining the modern, reinvented Mill Street in Leamington. With live music, entertainment, and activities you've never experienced a night market like this! Be a part of the Uptown Leamington experience!

In 2024, the LAC facilitated the success of four Mill St. Markets. The markets were held on **June 7, July 12, August 9, and September 13** from 5-10 pm. 2024 marked a year of significant growth of Mill St. Markets in the community with four events instead of the three that were facilitated in 2023.

Thank you to our sponsors and those who partnered with us to make Mill St. Markets successful.

## PARTNERS



Municipality of  
**Leamington**  
live | play | work



**Southpoint SUN**  
www.southpointsun.ca



**MIX 96.7**





# MILL ST. market: vendors

Mill St. Market, September 2024

3 Dog Poutinerie  
Amazonite Crystals  
Armondo's  
Baklava Luxe  
Bank Theatre  
Bark & Bliss Boutique  
Beach Therapy Art  
Bex Design Co.  
BlueFront Magnetics  
Bonded & Co.  
Bradt's Butcher Block  
Bronze Pigeon  
Bubble Tea Express  
Casa Bella Clothing  
Boutique Inc.  
Chungchun Ricedog  
Circus Play  
Clubfitt  
Cottam Candy Snack Co.  
Crafty Camper  
Cured Craft Brewing Co.  
Darlene Martens  
DD Designs 2021  
East Beach Flower Farm  
Elevated Shades  
Elza's Gourmet  
Emma's Dog Treats and  
Accessories

Erie Shores Health Care  
Essentials  
Faithful Clay Creations  
Freeze Dried Candy Land  
Freeze Fresh Delight  
Garden of Lilith  
Hydration Station  
Iris & Marnie  
Kelsy & Co.  
La Toxica  
Lake Erie Pebble and  
Beach Glass Design  
Leamington 150  
Leamington Accessibility  
Advisory Committee -  
Municipality of Leamington  
Leamington Horticulture  
Society  
Leamington Lion's Club  
Little Sprouts  
Love Sage Handmade  
Meraki Apparel  
Mill Creek Candle  
Company  
Mix 96.7 Black Burn Radio  
National Money Mart  
Nuts 4 Dates  
Ordonez Group Inc.

Otters & Acorns  
Pawfections By TK  
Pieces of the Past  
Pretzel Central  
Rico Taco Mexican Street  
Eats  
Scentsy  
Silky Soft Bath  
Company/Crafty Candles  
Sizzlers Snack Shack  
Snaxicans  
Sonia's Catering  
Stone Turtle Studio  
Tasty Treats  
Tell Your Loved Ones They  
ROCK  
The Richmond Popcom Co.  
Things Close By  
Top Dog  
Twisted Sistaz  
UMEI Christian High School  
Uptown Leamington BIA  
WindsorEats  
Your Inner Rewilding  
Zio Donal's Pizza



ARTS  
@ the  
MARINA

Board members volunteering at Arts @ the Marina, 2024

In 2024, the Leamington Arts Centre proudly presented its **30th annual Arts @ the Marina outdoor arts and crafts show**.

This two-day event held on July 27 & 28 at the scenic lakeside Leamington Municipal Marina/Rick Atkin Park, featured a **75 artisans on display**, live local music, children's activities, food and refreshments.

Thank you to the sponsors who helped make the event a success:





# ARTS @ the MARINA: vendors

Arts @ the Marina, July 2024

7byRaz African Fashion  
 and Accessories Corp.  
 A Touch of Grace  
 Access Storage  
 Alice Welsh Pawttery  
 All You Wood Need  
 Amazonite Crystals Healing  
 Stones  
 Ashley Hastings Art  
 Autumn's Creations  
 Baked by Rita  
 Bishop's Artwork Wonders  
 Blackbum Radio  
 BlueFront Magnetics  
 Bubble Tea Express  
 Cerebral Escape Creations  
 Christine's Bake Shop  
 Chungchun Ricedog  
 Walker  
 Circus Teddy  
 Coaster Creations  
 Crafty Chicks  
 Crystal Connections  
 D'Vinyl Designs  
 Da Costa  
 Dandy Cotton Candy  
 Dazzling Decor with  
 Destinee  
 DD Designs 2021  
 Desire Me Now

Earth and Fire  
 Empowered Moon Designs  
 Erie Treasures Chainsaw Art  
 EVB Jewelry Inc.  
 F.A.B. Parties and Events  
 Fairy Wheat Creations  
 Footpath Pottery  
 Freeze Dried Candy Land  
 Gentle Wolf Collection  
 Incredible Spread'em  
 Iris & Marnie  
 J and J Temple  
 Photography and More  
 Jennie B Designs  
 Joyful Creations  
 Kerry Steptoe Art and  
 Jewelry  
 Lally Auto Group  
 Light Up Your life  
 Lisa's Small Batch  
 Everything Sauce  
 Little Lamb Stitchery  
 Lorie's Glass House  
 Love Sage Handmade  
 Lucky Girl Life  
 Makes Scents  
 Martina Obersat -  
 Basketmaker  
 Mary's Garden Memories  
 Messy Acrylics

Mirror World Publishing  
 Moringo's Gifts  
 My Choice Natural  
 Nancy Fram Artist & Steve's  
 Wood Working  
 ollo/shhh\_woww  
 Original Blend Pottery  
 Otters & Acorns  
 Permanent Pallets  
 Red Raven Flutes  
 Reg's Barkery  
 Robyn Marie Designs  
 Ruth Denn Art Works  
 Serenityplaquecreations  
 Sew What and More  
 Sizzlers Snack Shack  
 Tell Your Loved Ones They  
 ROCK  
 The Crunchy Hammer  
 The Open Door  
 Twisted Sistaz  
 Vincent & Jules  
 Yogart  
 Your Inner Rewilding



Full patio at Mexican Village event, June 2024

## en plein air PATIO

In 2023 the LAC was successful in obtaining a Tourism Relief Fund (TRF) grant. The Tourism Relief Fund supports tourism businesses and organizations to adapt their operations to meet public health requirements while investing in products and services to facilitate their future growth.

As a means to engage new patrons and activate the spaces outside the LAC with new programming, this grant was used to fund the construction of a new patio on the west side of the facility, next to the Big Tomato. The project involved excavating and adding a concrete pad, aluminum railings, gates and furnishing the patio with tables, chairs, umbrellas, and storage sheds.

In 2024, the LAC invested in additional bar and food service equipment and signage. In the beginning of July, the patio was named and officially opened to the public. A variety of local wines, craft beers from Top Dog Brewery, and other cocktails were served.

The patio featured live local music on several weekends throughout July and August, special weekly artisan cocktails, drink discount specials and colouring books for patio guests to enjoy. Patio patrons also received free gallery admission with a drink purchase.

### **Patio Hours (July & Aug)**

Thursday 12:00-4:00pm

Friday 3:00 -9:00pm

Sat 3:00 -9:00pm

Sun 4:00 -7:00pm



Live music on the patio, July 2024

**Live Music Performances:**

- July 20: Common Ground from 5-8pm
- July 21: James Staley 3-6pm
- August 3: Back 2 Back 5-8pm
- August 4: Steve Bonnici 3-6pm
- August 17: Joe Trocchi & Dino Urbano 5-8pm
- August 18: James Staley 3-6pm

**Special Events:**

- Leamington 150 Car Show
- Mexican Village
- Patio Paint Night
- Mill St. Markets in June, July, August, and September



**Artisan Cocktail Specials**



# a signature CHRISTMAS: indoor artist market



Sharon Suitor's display in A Signature Christmas, December 2024

In 2024, the LAC presented its annual indoor Christmas Arts & Crafts show, A Signature Christmas. The show was open to all artists and artisans in any medium; photography, painting, jewelry, literary arts, crafts, woodworking, glasswork, pottery, and more.

Artists exhibited and sold their work directly inside the Cleveland Cliffs Gallery during this six week "gift shop" style exhibition.

## 2024 Exhibitors:

Alice Welsh Pawttery  
Bearfoot Studios  
Catherine Johnson  
Cleto Comics  
Leamington Arts Centre  
Permanent Pallets  
Sally LePla  
Sharon Suitor

# Education Program Report

## Andrea Niven, Instructor



As the Art Instructor for the LAC, I'm pleased to report that the 2024 education programs were both enriching and successful. We offered a diverse range of classes for youth, adults, and families, providing opportunities for creative expression at all skill levels. In addition to our core offerings, we introduced learning experiences, such as specialized workshops, which deeply engaged participants and sparked creativity.

Our Winter and Fall programs, along with the summer art camps, provided exceptional opportunities for artistic exploration and skill development. These programs saw fantastic participation, and students thoroughly enjoyed the thoughtfully curated activities.

In addition to our core education programs, we hosted two Sip and Paint Nights, along with an outdoor Sip and Paint event on our patio. These sessions, which combined step-by-step painting instruction with wine, beer, and food, offered participants a fun and relaxing experience. Participants not only learned new art skills but also had fun in a welcoming and creative atmosphere.

Guided gallery tours continue to receive positive feedback, with strong participation from school and community groups. Many of these groups have also added follow-up workshops after the tour with Bear Foot Studios in our education studio, highlighting the growing demand in this area. This collaboration is proving to be a valuable opportunity to expand the LAC's educational offerings and reach a wider audience.

Beyond structured programs, LAC is fostering a vibrant and supportive community of artists. Through our workshops, classes, and special events, we are creating spaces where individuals can connect, share ideas, and inspire one another. Whether beginners or experienced artists, participants are finding opportunities to grow creatively while building meaningful relationships within the local arts community.

The LAC's education programs continue to grow and adapt, reflecting Leamington's enthusiasm for creative experiences. The strong participation across all age groups demonstrates the value of accessible and engaging art opportunities. In summary, I look forward to further collaborating with LAC to develop innovative and meaningful educational initiatives in 2025 and the years to come.

Andrea Niven  
Art Instructor/Board Member



## education PROGRAMS: youth

Little Cubs Craft Club participants, February 2024

The LAC strives to enrich our community's understanding and appreciation for arts and culture while assisting in enhancing skills and talents of youth and adult artists. Come join us and explore your artistic side. Develop your skills and have fun in our 2<sup>nd</sup> floor Education Studio. We offer a wide range of adult and children's classes suited to all levels and many areas of interest as well as holiday and seasonal art camps for children.

**Little Cubs Craft Club** with Andrea Niven of Bear Foot Studios:  
February 12, February 26, March 4, March 18, April 8, April 22, May 13, May 27

**Elements and Principles of Art and Design for Youth** with Andrea Niven of Bear Foot Studios:  
January 8, January 15, January 22, January 29

**Summer Art Camp for Children 4-14 Years** with Andrea Niven of Bear Foot Studios:  
July 8, July 9, July 10, July 11, July 12, August 12, August 13, August 14, August 15, August 16

**Family Craft Night** with Andrea Niven of Bear Foot Studios:  
January 26, March 14, October 24, December 13



Sip & Paint Night, February 2024

## education PROGRAMS: adult

The LAC strives to enrich our community's understanding and appreciation for arts and culture while assisting in enhancing skills and talents of youth and adult artists. Come join us and explore your artistic side. Develop your skills and have fun in our 2<sup>nd</sup> floor Education Studio. We offer a wide range of adult and children's classes suited to all levels and many areas of interest as well as holiday and seasonal art camps for children.

**Exploring Famous Artists and Styles of Painting for Adults Part 2** with Andrea Niven of Bear Foot Studios:

January 15, January 29, February 12, February 26, March 4, March 18, April 8, April 22, May 13, May 27

**Drawing Skills & Watercolour Techniques** with Andrea Niven of Bear Foot Studios:

January 17, January 31, February 14, February 28, March 6, March 20, April 10, April 24, May 15, May 29

**Sip & Paint Night** with Andrea Niven of Bear Foot Studios:

February 9, April 12, August 23 (Patio Paint Night), September 20, November 29

**Family Craft Night** with Andrea Niven of Bear Foot Studios:

January 26, March 14, October 24, December 13



MARKET  
PLACE:  
artist market,  
café, bar

Market Place, 2024

**The Market Place is a reinvented gift shop, café and wine bar space featuring artwork exclusively by its members. This unique and one-of-kind space aims to highlight the originality, quality, craftsmanship and creativity found only in works bearing an artist's signature.**

The Market Place café and wine bar also highlights our area's wineries, and breweries. A selection of coffee, tea, soda, local wines, craft beers and sprits are served daily and during special events.

The Market Place is the perfect place to stop in, sit, relax or socialize, drink and shop for creative gifts. For special occasions and for yourself, no gift is better than the one that is handmade and local. To yourself or to someone special, give the gift of art.

Alex Klassen  
Allison McLister  
Andi Collins  
Andrea Niven  
Annie Pump  
Barb Wright  
Carly Verheyen Butler  
Catherine Johnson  
Chad Riley  
Coleen Kroeker  
Dan Mallet  
Darlene Martens  
David Atkinson  
David Beasley  
Diane Sullivan  
Elizabeth Hebert

Gerry Hucko  
Gloria Miceli  
Harold Burton  
Helen Lavin  
Irina Teske  
James Hunt  
Janal Koenig  
Joel Westlake  
Karen Murray  
Kinga Chowdhry  
Leyla Munteanu  
Marena Woodsit  
Martyn Wells  
Mary Fogal  
Michelle Boyle  
Patrick Nicholson

Permanent Pallets  
Peter Oslon  
Rashmi Dadwal  
Sarah Rupert  
Sherry Stahl  
Speedprint  
Suellen Evoy-Oozer  
Susan Ross  
The Bank Theatre  
Todd Stahl  
Toni Wells  
Tracy Christina Aatery  
Val Read



# ART SUPPLY shop

Art Supply Shop, 2024

The art supply shop at the LAC boasts a large variety of art supplies including all sorts of paper, canvas, paints, pencils, pastels, brushes, and more. The art supply shop is also available on the LAC website for shoppers to browse inventory and make online purchases with in-store pick-up.

The LAC held four art supply sales in 2024. Members take an extra 10% OFF their art supply purchases every day of the year.



March 8-16



August 6-31



October 1-31



November 21-December 21



LAC  
accolades

Best of Windsor Essex Awards Ad, 2024

## The Best of Windsor Essex Awards

The Best of Windsor Essex Awards are a social media campaign organized by Tourism Windsor Essex Pelee Island in an effort to learn from locals where they want to dine, shop, play and stay. This campaign is designed to highlight some of the best of our region and share it with the close to 5 million tourists who visit our region annually.

**For the 8<sup>th</sup> year in a row, the Leamington Arts Centre was a finalist for the Tourism Windsor Essex Pelee Island's Annual BEST OF WINDSOR ESSEX awards.**

# VISITOR statistics



WFCU Credit Union Painting Competition, May 2024



**3.9/5 Rating on Facebook**  
**3,910 Followers on Facebook**



**1,918 Followers on Instagram**



**4.7/5 Star Rating on Google**



**515 MailChimp Subscribers**



**Total in-Person Visitors for the Year: 14,136**

*\*Number is approximate due to chip reader errors*

Art galleries are commonly one of the main tourism destinations for communities and the LAC is no different for Leamington. As visitor tracking reports the LAC is a major destination for tourists and when visitors are in town, they also frequent other establishments generating economic development.

***“Chad and his staff have been fantastic in all aspects. I have been a member for many years, participated in events, held an event for a book release and art show and each area is handled very professional, and well organized. I would highly recommend any artists to consider partnering with the gallery. The building is fantastic and the new art store is a great resource!.”***  
- Todd S.

***“Such a wonderful Arts Centre with wonderful people! I had my bridal shower here and it went perfectly. The staff helped set up/tear down and were so accommodating. The space was beautiful and the staff was great. 10/10 would recommend!”***  
- Chrissy N.

***“Cute little gallery and art store, and they also have a small gift store at the back of the gallery. Knowledgeable, and friendly, staff.”*** – C.O.



# STAFF accolades

Abigail Thiessen viewing the Henry Collection, January 2024

**Chad Riley, Director/Curator:** Riley holds a Master of Fine Arts (MFA) degree from Wayne State University, Detroit, MI USA with a specialization in Photography. He earned a Bachelor of Fine Arts (BFA) with Honours distinction and a minor in Art History from the University of Windsor, School of Visual Arts in Windsor, ON Canada. He is a qualified appraiser having completed studies in appraisal practices with the International Society of Appraisers (ISA) and is Uniform Standards of Professional Appraisal Practice (USPAP) compliant, the congressionally recognized set of appraisal standards promulgated by The Appraisal Foundation.

### Activities & Boards

LAC Director/Curator Chad Riley served his 8<sup>th</sup> year of volunteer service as Board Member for the Uptown Leamington BIA. In 2023 he became the Vice-Chair.

The Uptown Leamington Business Improvement Area (BIA) represents over 200 businesses in the Uptown area. The BIA's role is to develop the uptown core through beautification, general improvements and upgrades, promotion, events and marketing.

**Abigail Thiessen:** Abigail Thiessen joined the LAC team as the Program & Development Coordinator in November 2023. She has a passion for the arts, as an avid museum goer and armature painter, and enjoys investing her time in her local community. In 2024, Abigail was honored to present the Community Arts Infrastructure Grant at the WEA's and Windsor Mayor's Art Awards Celebration.

**Kennedy Lojewski:** Kennedy Lojewski joined the LAC in September 2024 as the Visitor Services & Gallery Attendant. She has had a life-long interest in the arts, exploring both visual art mediums and writing. She holds a Bachelor of Arts (BA) degree, with Honours, from Wilfrid Laurier University, majoring in both English and History, as well as a Graduate Certificate in Creative Book Publishing from Humber College.



Smart Serve Trained Volunteers at Mill St. Market, June 2024



### Smart Serve

To ensure patrons receive safe and quality service, all staff members are required to complete the online Smart Serve training course. Select Board Members have also received certification.

The Smart Serve Responsible Alcohol Beverage Sales & Service Training Program is approved by the Alcohol and Gaming Commission of Ontario (AGCO) as the only responsible alcohol training program for Ontario. Smart Serve is a dedicated advocate for a safer and healthier Ontario. It is required by law to sell or serve alcohol in Ontario. This program is designed for servers, bartenders, hostesses, food and beverage managers, or anyone who is involved in an event where alcohol is served.



## APPRAISAL/ EVALUATION services

Appraisal of the Henery Collection

The LAC offers a variety of fine art appraisal services for various functions including formal appraisals, for insurance coverage, estate division, and donation, as well as less formal evaluations and consultation services, for the client who is just curious about art they may own.

Appraiser: Chad Riley, Director/Curator

### **Appraisal Services Offered**

Written appraisal reports for charitable donations and acquisitions, insurance coverage and claims, resale and liquidation, identifying most suitable markets for resale of fine art, as well as description, identification and arranging authenticity when required.

### **Types of Property Appraised**

Fine art such as paintings, lithographs, drawings, photographs, and sculpture.



## venue RENTALS

Private Venue Rental

**In 2024, the LAC was host to over 150 private, corporate, and public venue rentals.**

The LAC is proud to provide a gathering place for the community's programming needs and special events. Our space is available to individuals, businesses, community groups and organizations for private social events such as baby showers, bridal showers, wedding ceremonies, receptions, book launches, meetings, educational and business events, and more.

The beautiful main floor galleries offer large spaces for entertaining and socializing with plenty of room for hors d'oeuvres and cocktail tables, buffets, receiving tables, or seated catered dining. It's the perfect unique setting for showers, weddings, anniversaries, book or CD launches, and more. The galleries are available for facility rentals after 5pm any day of the week including weekends (*some exceptions may apply*).

The large 2nd floor community room is the perfect setting for educational programs, seminars, workshops, meetings and conferences. It comes equipped with two 100" projector screens, tables, and seating for up to 70. The community room is available all hours any day of the week, including weekends (*some exceptions may apply*).



Board/Meeting Room, 2<sup>nd</sup> floor

In addition to exhibition space in our galleries, the LAC also offers office space, meeting room space, and workshop and studio space, which are all fully accessible! In 2024, several local business made use of the LAC. Revenues from facility rentals aid in offsetting operating costs so more funds can be used for programing and events. The LAC truly is a building for the community.

In 2024, some of the businesses and organizations who utilized the space included: the Church of Christ, UE Enclosures, the Municipality of Leamington, and Security One.

**Resident Businesses**



# Statement of Revenues & Expenditures

---

## Report to the Members

The accompanying financial statements of the South Essex Arts Association which comprise the statements of the financial position as of December 31, 2024 have been externally reviewed by Albuquerque Accounting.

---

## Board of Director's and Treasurer's Responsibility for the Financial Statements

The SEAA Treasurer and LAC Director are responsible for the preparation and fair presentation of these financial statements as approved by the Board of Directors in accordance with Canadian accounting standards for not-for-profit organizations, as shown herein and prepared by Albuquerque Accounting.

---

## Opinion

In the Board's opinion, the financial statements present fairly, in all material respects, the financial position of the South Essex Arts Association as of December 31, 2024 and the results of its operations and its cash flows for the year ended December 31, 2024 and in accordance with Canadian accounting standards for not-for-profit organizations.

South Essex Arts Association

Financial Statements  
December 31, 2024

## INDEPENDENT PRACTITIONER'S REVIEW ENGAGEMENT REPORT

### To the Members of South Essex Arts Association

We have reviewed the accompanying financial statements of South Essex Arts Association that comprise the balance sheet as at December 31, 2024, and the statements of revenue and expenses, statement of net assets and statement of cash flow for the year then ended, and a summary of accounting policies and other explanatory information.

#### *Management's Responsibility for the Financial Statements*

Management is responsible for the preparation and fair presentation of these financial statements in accordance with Canadian accounting standards for not-for-profit organizations, and for such internal control as management determines is necessary to enable the preparation of financial statements that are free from material misstatement, whether due to fraud or error.

#### *Practitioner's Responsibility*

Our responsibility is to express a conclusion on the accompanying financial statements based on our review. We conducted our review in accordance with Canadian generally accepted standards for review engagements, which require us to comply with relevant ethical requirements.

A review of financial statements in accordance with Canadian generally accepted standards for review engagements is a limited assurance engagement. The practitioner performs procedures, primarily consisting of making inquiries of management and others within the entity, as appropriate, and applying analytical procedures, and evaluates the evidence obtained.

The procedures performed in a review are substantially less in extent than, and vary in nature from, those performed in an audit conducted in accordance with Canadian generally accepted auditing standards. Accordingly, we do not express an audit opinion on these financial statements.

*Basis for Qualified Conclusion*

In common with many operations, the entity receives cash for its sales, the completeness of which is not susceptible to satisfactory review procedures. Accordingly, we were not able to determine whether any adjustments might be necessary to revenue, excess of revenues over expenses and assets for the years ended December 31, 2024 and 2023 and net assets as at January 1 and December 31 for both the 2023 and 2024 years.

*Qualified Conclusion*

Based on our review, except for the possible effects of the matter described in the Basis for Qualified Conclusion paragraph, nothing has come to our attention that causes us to believe that these financial statements do not present fairly, in all material respects, the financial position of South Essex Arts Association as at December 31, 2024, and the results of its operations and its cash flows for the year then ended in accordance with Canadian accounting standards for not-for-profit organizations.

**HICKS, MacPHERSON, IATONNA  
& DRIEDGER LLP**

*Hicks, MacPherson, Iatonna  
& Driedger LLP*

Chartered Professional Accountants  
Licensed Public Accountants

Leamington, Ontario  
April 16, 2025

## South Essex Arts Association

### Balance Sheet as at December 31

	2024	2023
<b>Assets</b>		
<b>Current</b>		
Cash	\$ 124,965	\$ 18,557
Prepaid expenses	165	-
Art supply shop inventory (note 1)	32,706	29,877
Accounts receivable	11,151	6,100
	168,987	54,534
<b>Investments (note 2)</b>	16,247	15,609
	\$ 185,234	\$ 70,143
<b>Liabilities</b>		
<b>Current</b>		
Accounts payable and accrued liabilities	\$ 18,838	\$ 5,980
Government remittances payable	3,554	5,195
Deferred revenue	7,808	6,203
	30,200	17,378
<b>Net Assets</b>		
Net Assets - Restricted	16,247	15,609
Net Assets - General	138,787	37,156
	155,034	52,765
	\$ 185,234	\$ 70,143

*See accompanying notes to financial statements*

**South Essex Arts Association**  
**Statement of Revenue and Expenses**  
**for the years ended December 31**

	2024	2023
<b>Revenue</b>		
Public programs and events	\$ 123,977	\$ 93,344
Exhibitions and displays	11,913	12,083
Public support	139,136	50,462
Art supply shop	13,760	12,743
Market place	6,189	23,844
Facility rentals	55,196	38,201
Granting agencies	70,486	95,173
Education programs	12,893	17,680
Other revenue	2,991	2,381
	436,541	345,911
<b>Expenses</b>		
Public programs and events	74,641	86,797
Exhibitions and displays	23,835	13,963
Art supply shop	7,334	7,132
Market place	2,825	2,036
Business and administration	179,116	154,241
Education programs	7,425	10,517
Building, facility and occupancy	39,096	59,409
	334,272	334,095
<b>Excess Revenue Over Expenses for Year</b>	<b>\$ 102,269</b>	<b>\$ 11,816</b>

*See accompanying notes to financial statements*

**South Essex Arts Association**

**Statement of Net Assets  
for the years ended December 31**

	<b>Net Assets General</b>	<b>Net Assets Restricted</b>	<b>2024 Total Net Assets</b>	<b>2023 Total Net Assets</b>
<b>Balance, Beginning of Year</b>	\$ 37,156	\$ 15,609	\$ 52,765	\$ 40,949
<b>Revenue Over Expenses</b>	101,631	638	102,269	11,816
<b>Balance, End of Year</b>	\$ 138,787	\$ 16,247	\$ 155,034	\$ 52,765

*See accompanying notes to financial statements*

**South Essex Arts Association**  
**Statement of Cash Flow**  
**for the years ended December 31**

	2024	2023
<b>Cash flow from operating activities</b>		
Cash receipts from customers, donations and other	\$ 426,244	\$ 313,326
Cash paid to suppliers and employees	(322,189)	(325,122)
Interest received	2,991	2,381
	107,046	(9,415)
<b>Cash flow from investing activities</b>		
Change in investments	(638)	1,589
<b>Cash flows from financing activities</b>		
Repayment of long-term debt	-	(40,000)
<b>Net Change in Cash</b>	<b>106,408</b>	<b>(47,826)</b>
<b>Cash, Beginning of Year</b>	<b>18,557</b>	<b>66,383</b>
<b>Cash, End of Year</b>	<b>\$ 124,965</b>	<b>\$ 18,557</b>

During the year donations in kind of \$3,860 (2023 - \$14,259) were included in the statement of revenues and expenses.

*See accompanying notes to financial statements*

**South Essex Arts Association**  
**Notes to Financial Statements**  
**for the year ended December 31, 2024**

---

**Nature of Operations**

South Essex Arts Association is a registered charity. The organization is a public, not-for-profit arts centre with a focus on exhibiting visual arts and developing arts and culture programming.

**1. Summary of Accounting Policies**

The financial statements were prepared in accordance with Canadian accounting standards for not-for-profit organizations (ASNFPO) and include the following accounting policies:

***Use of Estimates***

The preparation of financial statements in conformity with Canadian accounting standards for not-for-profit organizations requires management to make estimates and assumptions that affect the amounts reported in the financial statements and accompanying notes. Significant items subject to such estimates and assumptions include the valuation of inventory and accrued liabilities. Although these estimates are based on management's best knowledge of current events and actions that the organization may undertake in the future, actual results could differ from the estimates.

***Inventory***

Inventory, which consists of retail merchandise, is valued at the lower of cost and net realizable value, with cost being determined on a first-in, first-out basis. Net realizable value is the estimated selling price in the ordinary course of business.

***Donated Services***

The work of the organization benefits from the voluntary service of many individuals. Where these services are not normally purchased by the organization and because of the difficulty of determining their fair value, most donated services are not recognized in these financial statements. During the year, \$Nil (2023 - \$10,739) of donated services and \$3,860 (2023 - \$3,520) of art are recorded in the financial statements.

***Revenue Recognition***

The organization follows the deferral method of accounting for contributions and grants. Under this method, restricted contributions and grants are deferred and recognized as revenue when the related expenses are incurred. Unrestricted contributions and grants are recognized as received or receivable if the amount to be received can be reasonably estimated and collection is reasonably assured.

Public support and public programs and events are reported as revenue when received. Market place, art supply shop, exhibitions and displays, facility rentals, education programs and all other income is recorded at the time of sale or when the service is provided, the price can be estimated or determined, and collection is reasonably assured. Government assistance is recorded when amount can be reasonably determined and criteria for the program have been met. Memberships are recorded based on the period of membership. Other revenue is recorded when received.

**South Essex Arts Association**  
**Notes to Financial Statements**  
**for the year ended December 31, 2024**

---

**1. Summary of Accounting Policies (Cont'd)**

***Financial Instruments***

*Measurement of Financial Instruments*

The organization initially measures its financial assets and financial liabilities at fair value, except for certain non-arm's length transactions.

*Measurement of Financial Instruments (Cont'd)*

The organization subsequently measures all its financial assets and financial liabilities at amortized cost, except for investments in equity instruments that are quoted in an active market, which are measured at fair value. Changes in fair value are recognized in net income.

Financial assets measured at amortized cost include cash, prepaid expenses, and accounts receivable.

Financial assets measured at fair value include investments.

Financial liabilities measured at amortized cost include accounts payable and accrued liabilities, government remittances payable.

***Impairment***

Financial assets measured at cost are tested for impairment when there are indicators of impairment. At the present time there are no indications of impairment.

***Transaction Costs***

The organization recognizes its transaction costs in net income in the period incurred. However, the carrying amount of the financial instruments that will not be subsequently measured at fair value is reflected in the transaction costs that are directly attributable to their origination, issuance or assumption.

**2. Investments**

Investments consist of a guaranteed investment certificate with a one year term at an interest rate of 4.00% maturing February 22, 2025. Subsequent to year-end, the amount was reinvested for another one year term with an interest rate of 2.70%, maturing on February 22, 2026.

**3. Financial Instruments**

***Risks and Concentrations***

The organization is exposed to various risks through its financial instruments, without being exposed to concentrations of risk. The following analysis provides a measure of the organization's risk exposure at the balance sheet date.

**South Essex Arts Association**  
**Notes to Financial Statements**  
**for the year ended December 31, 2024**

---

**3. Financial Instruments (Cont'd)**

***Liquidity Risk***

Liquidity risk is the risk that an organization will encounter difficulty in meeting obligations associated with financial liabilities. The organization is exposed to this risk mainly in respect of its accounts payable and accrued liabilities and government remittances payable. The organization manages its liquidity risk by constantly monitoring cash flows and financial liability maturities, and by holding assets that can be readily converted into cash. Management believes the organization has sufficient funds to meet liabilities as they come due. There has been no change to the risk exposure from the prior year.

***Market Risk***

Market risk is the risk that the fair value or future cash flows of a financial instrument will fluctuate because of changes in market prices. Market risk comprises three types of risk: currency risk, interest rate risk and other price risk. The organization is mainly exposed to other price risk.

***Other Price Risk***

Other price risk is the risk that the fair value or future cash flows of a financial instrument will fluctuate because of changes in market prices (other than those arising from interest rate risk or current risk), whether those changes are caused by factors specific to the individual financial instrument or its issuer, or factors affecting all similar financial instruments traded in the market. The company is exposed to other price risk through its investment. The company does not manage any exposure to other price risk. There has been no change to the risk exposure from the prior year.



Your Interest and Support in the *South Essex Arts Association* helps build a richer and brighter community. Thank you!



The LAC is a proud member of the OAAG offering reciprocal benefits to over 80 institutions. [www.oaag.com](http://www.oaag.com)



The CMA is the voice for Canada's vibrant museum community for the millions of Canadians whose lives are enriched by museums



The LAC is a member of Volunteer Canada and has adopted their code and we are committed to demonstrating our value in volunteerism.



The LAC is a not-for-profit organization reliant on community support. Make a donation safely and securely to the LAC via [Canadahelps.org](http://Canadahelps.org)



**Cover Image:**

Douglas Bedard, *Guarding the Nest*, July – September 2024