

The South Essex Arts Association



Annual Report 2017

About the SEAA

The South Essex Arts Association the governing body for the Leamington Arts Centre. The SEAA is a not for profit charitable organization established in 1971 dedicated to creating, sustaining and celebrating the arts.

Registered Charitable Not For Profit Organization No. 11915 7543 RR 0001

About the LAC

The Leamington Arts Centre (LAC) is located in the heart of South Western Ontario's beautiful uptown Leamington in one of the town's many wonderful heritage buildings.

The LAC is a state of the art gallery which offers three exhibition spaces with over 400 linear feet of continuous wall space and 3000sq/ft of floor space, as well as a gift shop, art classes, workshops and meeting spaces. The LAC is one of the area's paramount places to view modern art with an emphasis on local and aspiring artists and artisans.

Mission Statement

The South Essex Arts Association is dedicated to creating and sustaining a celebration of the human spirit through the nurturing of the arts within our community.

Values/Vision Statement

The South Essex Arts Association, in partnership with the various art mediums and other disciplines within the arts culture, promotes, fosters and stimulates the appreciation of the arts.

Through artistic events and exhibitions with a special focus on the work of local artisans, SEAA assists in preserving all forms of art within the community.



The LAC is a proud member of the OAAG offering reciprocal benefits to over 80 institutions. www.oaag.org.

The LAC is an official location where the Cultural Access Pass card can be validated for new Canadian Citizens.



Message from the Chair

The LAC has grown substantially over the last year. We are seeing an increase in almost every area of the gallery, from donations, to art exhibitions. We continue to be a leader in the vibrant and diverse community we serve.

We launched our Volunteer Program, which was developed by a subcommittee. Any individuals who are interested in volunteering at the LAC will go through a screening process and orientation before commencing their duties. A Volunteer Recognition piece was also introduced.



Our various long standing fundraisers, such as Arts at the Marina and the March Masquerade all drew great turn outs. Corks & Canvas, a newer venture for the LAC, was offered throughout the year, with groups of up to 16 participants in attendance at one time. Participants completed a rendition of a Tom Thompson landscape.

Local artists exhibited marvelous works of art in our galleries. Exhibitions like Journey of the Monarch, REVELATION: Ina Vu, LIGHT-VISION-EMOTION: Phos 3 by Dave Paddick & Kathryn Parent, FATES OF AUTHORS OF THE NEW TESTAMENT: Bryan S. Halls, and TRANSITIONS: Douglas Bedard - DKN Blues, all lured people from all walks of life to enjoy and admire the arts.

One of our main focuses of 2017 was education. Mosaic classes taught by Astrid Tobin as well as other education initiatives were introduced. We also plan on expanding our kids art class offerings. Printmaking Classes continue to be offered and facilitated by Marshall Heaton in the lower level of the gallery.

With the departure of Erie Quest articles, we were able to renovate the upper level of the gallery, with a kitchenette, office space for LAC staff, as well as a break area for staff. We have also offered up space for Artist Network meetings which occur every 3 months, each one organized with a theme and guest speaker.

Generosity was certainly in the air in 2017. The LAC received a donation from the Marianne Barrie Estate Donation. A piece titled, "Steamer Pelee", circa 1935, was donated to our collection. We also received a Harold Klunder print donated by John Haynes.

Thank you to all who support the LAC and to those that have a desire to inspire and deepen their creative minds and celebrate arts and culture. You have uncovered new ways of seeing the world through your imagination.

Best,

A stylized, handwritten signature in dark ink, appearing to read 'Mary Jane Nohra'.

Mary Jane Nohra
Chair, South Essex Arts Association

Message from the Director

"Creativity is contagious, pass it on." Albert Einstein

As the LAC continues to grow each year it remains imperative that we continue to adapt and embrace change. It is only by way of proactive [and creative] change that we can realize our goals and position the LAC for the future. This is how my report began in 2016 and it is still very fitting for 2017. The year again was no exception to preceding years and did not come without more change, this year however, more creative and courageous ones.



Following the updated strategic plan adopted in 2016 the LAC focused on long-term goals and objectives as well as comparatives derived from meetings with other regional art galleries and their operational structures. The aim, to situate the LAC administration and the ever increasing job demands in a more manageable state while developing best practices for administering current programs and to establish suitable procedures for new programs.

In preparation for this and some of the creative changes, enhancements and refinements to the usage and spaces of the facility itself were a main target of time, energy and consideration. These changes were of great investment expenses in hopes with continued attention would become a standard revenue stream and increase LAC public awareness and its visitor traffic - further explained later under Facility in this report.

Through it all, the SEAA/LAC has reminded committed to its long standing mission to create, sustain and celebrate the arts, and I pleased to share with you an overview our year.

Exhibits & Events

The exhibition season was complete with 29 different exhibits in total from January 3 through December 23. These exhibits included 17 solo exhibits and 12 group exhibits inclusive of over 300 artists featured from all over region and beyond.

Once again, one of the more notable community exhibitions for 2017 was the, *19th Annual Juried Student Art Show*. This exhibit filled all three of the exhibition spaces as it continued to grow yet again from 165 entries in 2015; 220 entries in 2016 to 246 in 2017, thanks again to the participation and interest of local student artists, their devoted teachers and parents and through the sponsorship of the Rotary Club of Leamington and the Kiwanis Club.

Another notable exhibit which continues to gain in popularity and in participation is the annual *Anything's Possible Amateur Photo Contest* which nearly doubled in size with 208 entries in 2017 from the 2016 record of 120 entries, thanks to our generous sponsors Speedprint who offers photography printing and canvas wrap gift certificate prizes and Framing by Anna who meticulously completes the matting each year and donates a custom framing gift certificate to the People's Choice winner.

The two principal events, the *March Masquerade* and *Arts @ the Marina* both saw significant changes through re-planning and re-strategizing which paid off. The 4th annual *March Masquerade*, which had lower attendance than 2016, but realized the same profits due to additional seating and a better layout which enabled guest to stay longer and participate in fundraising activities at the event. Success was also achieved through refining and cutting some event expenses. *Arts @ the Marina*, which saw dramatic changes in 2016 to the layout fee structure, proved to have worked, as the 2017 show was strong and stable, due in part to the support and understanding of the Municipality agreeing to allow the event to remain at the Rick Atkin Park/Leamington Municipal Marina.

Grants & Fundraising

A continued operating grant from the Municipality of Leamington as always contributed significantly to our overall success in 2017 however, Municipal funding for the Erie Quest Ship Wreck museum located on the second floor ceased due to budgeting and tourism changes.

The South Essex Community Council funded the hiring and training of a brand new position, Collections Assistant for the period of nearly 4 months to aid in the organization and preservation of the LAC/SEAA permanent collection, inventorying, accessioning, photographing, cataloging and care of all its contents. Jobs Canada once again funded not only one but two summer student positions from June to August for a total of roughly \$6000. Harmony Shaw and Eric Kirwin were hired and staff hours disbursed which also enable the LAC to be open to the public 11 additional hours per week, including Sundays.

For the second year, the Town of Kingsville Community Grant was received in the amount of \$500 towards operating expenses.

Other annual fundraising initiatives, the President's Appeal, A1 Chinese Restaurant Fundraiser, Gilligan's Neighbourhood Grill Fundraiser also continued and were profitable. And partnership and sponsorship by the Uptown Leamington BIA continued with Corks & Canvas: wine and paint night.

Donors, Members, Volunteers & Supporters

It is by way of the generous support from donors, members, volunteers and supported that the LAC continues to purposefully grow and evolve. Support by way of individual and corporate membership was strong and slightly increased from 2016 amounting to approximately \$3300.

In line with the strategic plan and the need for administration support, the SEAA Board approved the formation of a Volunteer Resources Development Task Force to develop an in-depth Volunteer Program. The LAC became members of Volunteer Canada and adopted a volunteer code of ethics. The task force then began to research and conduct in-person meetings of volunteer programs in other arts organization. As a result, the task force developed policies and procedures on the implementation of the program, including: selection and recruitment, orientation and training, volunteer retention and recognition. Ultimately a Volunteer Program manual was created and Mari Bein was selected as the Volunteer Program Resource

Coordinator to assist with running the program. The LAC is now poised and ready to accept volunteers to fill two very important and meaningful positions: Docent + Administrative Assistant and the second, Facilities + Events Assistant.

John and Patricia Haynes, longtime members, again in 2017 presented the SEAA/LAC with two exceptional gifts – Untilled, Lithography by well-known Canadian artist Harold Klunder. Mr. Haynes also himself sold at a reasonable price two of his own mono-print works, which are now among the works in the permanent collection.

The SEAA/LAC volunteer Board of Directors saw a couple changes with the acceptance of Dorit Girash and Maria Jose to the board, while executive's positions remained unchanged.

The LAC also welcomed Bailey Harder from Leamington District Secondary School as a volunteer co-op placement student from January through June.

Facility

In recent years the second floor of the LAC comprised of the Erie Quest Shipwreck Museum and office space, a small meeting space, and other spaces used, but a lot of vacant and untouched space. With the growth and demand on LAC administration, one of the offices spaces was designated as a new LAC administration office.

Much of the year after the announcement of the loss of Erie Quest was focused and dismantling the collection, which had been housed at the LAC for over a decade. This primarily included locating owners of artifacts and documents and arranging the legal and rightful removal of historical items. Once the space was empty the LAC began a re-purposing initiative which included transforming and renovating the space into a 4th exhibition space and new community room as well as a second kitchen to enable hosting larger events and more elaborate facility rentals such as wedding, showers and corporate business seminars and community group meetings. With investments from the municipality to upgrade electrical and plumbing, repair walls and replace emergency lighting, the room was fit to be remodeled. A very generous donation from local business Counter Effects funded 100% of the materials and installation of all new cabinets and quartz countertops and a donation from the Uptown BIA will contribute the purchase of appliances.

After some creative reworking of the spaces and some courage for 'big change' ... and much time reorganizing the LAC is proud to announce that in 2018 the second floor will feature a new exhibition space as well as a larger community meeting space.

In Summary

The LAC had an extremely busy and successful year and has remained committed to its perseverance for excellence. Many new 'creative' facility, administration and volunteer enhancements look very promising for 2018 and beyond, for which I am personally very excited to see come to fruition.

I would be remised not to mention my gratitude for the valuable assistance provided by our Gallery Assistant, Sophie Hinch each day and especially for the

latitude and support the esteemed Board continues to entrust in me with the operations of the LAC. In 2017 their investment in staff resources and my own personal continuing education with the International Society of Appraisers in appraisal studies was deeply appreciated.

And it is with great thanks to all LAC friends for your support and patronage that we look forward to what comes next.

A handwritten signature in black ink, appearing to read 'CRiley', with a stylized, flowing script.

Chad Riley, MFA, ISA
Director, Leamington Arts Centre

Board of Directors, Staff & Volunteers

CHAIR

Mary Jane Nohra

VICE CHAIR

Sheila McBrayne

TREASURER

Penny Belluz

SECRETARY

Jan Bateman

EX-OFFICIO

Tim Wilkinson

Derek Friesen

Ken Friesen

Dorit Girash (temp April – Oct)

Maria Jose (interim until AGM)

Arlene Sinasac

Mike Thibodeau

Shelly Quick

DIRECTOR

Chad Riley

GALLERY ASSISTANT

Sophie Hinch

ASSISTANT PROGRAM COORDINATOR

Harmony Shaw

PROGRAM OUTREACH COORDINATOR

Eric Kirwin

COLLECTIONS ASSISTANT

Karlene Ouellette

CO-OP STUDENT PLACEMENT

Bailey Harder

VOLUNTEERS

Anna Lamarche

Ariel Simpson

Audrian Hutchinson

Bailey Harder

Bill Chaplin

Bill Hutchinson

Brian Cornies

Charlie Wright

Dennis Riley

Derek Friesen

Diane Riley

Dick Grolman

Dorit Girash

Douglas Bedard

Ella Riley

Eric Naylor

Gail Grant

Gerry Hucko

Hanna Renaud

Hayden Gaffen

Irena Vucajnk

Jessie Riley

Joan McDonald

John Haynes

JoAnne Zamparo

Lois Duncan

Louise Groeneweg

Madeline Butler

Marg Ross

Mark Caza

Mari Biehn

Noah Riley

Rosemary Dzus

Susan Rose

Sylvia Schiffrs

Tina Grolman

Valerie Cabrera



Volunteer Program

With the approval of the SEAA Board, a "Volunteer Resources Development Task Force" was formed to develop the LAC Volunteer Program. People with volunteer administrative experience were sought and the committee formed in April 2017 included:

- Dorit Girash (Chair), Mari Biehn, Rosemary Dzus, Mary Jane Nohra, Chad Riley

The first steps of the project were to develop a volunteer code, and to become members of Volunteer Canada, next to research and conduct in-person meetings of volunteer programs in other arts organizations with the goal of learning "best practices."

Finally, the task force developed policies and procedures on the implementation of the program. These forms and documents included:

Marketing & Advertising, screening, selection and recruitment, interviewing, orientation and training, job descriptions, volunteer retention and recognition.

Ultimately a Volunteer Program manual was created and Mari Bein was selected as the Volunteer Program Resource Coordinator to assist with running the program.

The two volunteer positions created and now available at the LAC are:

- **Docent + Administrative Assistant**
- **Facilities + Events Assistant**



Volunteer Program

As a result of the new Volunteer Program, the LAC is now a member of Volunteer Canada and has adopted their code and we are committed to demonstrating our value in volunteerism.

Who can volunteer? Everyone! Volunteers at the LAC are as diverse as the art we display and there are many unique opportunities to fit your interests and time. Knowledge of art is not necessary, just an appreciation for art and the enthusiasm to share it with others.

Docent + Administrative Assistant

The Docent + Administrative Assistant will welcome and engage patrons and help them connect with the art and have a memorable visit; inform patrons of current exhibits, upcoming events, classes and LAC activities of interest; conduct tours of the gallery for groups and schools, utilize techniques of dialogue and inquiry, the docent encourages patrons to participate, ask questions and become informed and enthused about the LAC, its exhibits and activities. As Administrative Assistant will help with administrative and office duties, fundraising and marketing campaigns, mailings, data entry and record keeping; Other clerical work such as answering the phone and directing class and inquiries, taking messages and other basic office related tasks.

Facilities & Events Assistant

The Facility + Events Assistant will assist with preparation, coordinating and set up of programs and activities at the LAC such as exhibit installation and de-installation, artist receptions, LAC private rental events and LAC art classes; assist with facility maintenance.



Gallery Assistant

The Leamington Arts Centre is a warm and inviting environment committed to supporting and promoting the arts in and around Windsor and Essex County. This creative space encourages the thriving local art scene through exciting events and engaging programs that I am proud to be a part of. I am able to network with fellow artist, interact with visitors, and I have the chance to see and be inspired by new art works.

I graduated from the Visual Arts program at the University of Windsor where I also acted as Gallery Coordinator for the SOVA Projects Gallery. This particular experience encouraged me to pursue a career in an art institution. I was lucky to find such a great space that allows me to deepen my passion for the arts and to apply my academic knowledge to real life situations.

As Gallery Assistant at the Leamington Arts Centre, I assist with day-to-day tasks, working closely with our Director and artists. I aid in the effective day to day operations of the LAC including assisting with exhibitions and events. I am learning how to construct exhibitions and helping with various prepator tasks. Having the opportunity to connect with inspiring artists and art supporters to create, sustain and celebrate the arts within my community has truly been a rewarding experience.

A handwritten signature in black ink that reads "Sophie Hinch". The script is cursive and fluid, with the first letter 'S' being particularly large and stylized.

Sophie Hinch
Gallery Assistant



Summer Student Program

Each year for the past several years the LAC has been successful at obtaining funding through **Canada Summer Jobs** Program for students under the age of 30 who are returning to school in the fall. Job placements typically range 6-12 weeks, in 2017 the LAC was successful in receiving funding for two students for 8 weeks each. This additional staff allowed the gallery visitor hours to increase by 11 additional hours per week with the gallery being open on Sundays for the months of July and August during peak tourism season.

1. Assistant Program Coordinator (June 28 – Aug 26)

Under the direction of the LAC Director, the Assistant Program Coordinator will provide assistance in all SEAA/LAC operations primarily including development and delivery of programs and services, gallery exhibitions, special events, the gift shop, art classes, marketing and communications, fundraising and day to day operations of the Leamington Arts Centre. Responsible to the Director, the Assistant Program Coordinator will assist in the development and execution of SEAA/LAC services and programming such as events and exhibitions with a focus on Arts @ the Marina; assist in day to day operations of gallery; learn and develop docent skills; assist with marketing and advertising strategies and delivery, use traditional media and social media to enhance SEAA/LAC's visibility and credibility within the community; assist in maintaining and developing membership, education programs and classes; assist in maintaining files, records and database as well as maintenance of facility; maintain a positive and professional attitude; display productive and accurate workmanship; adhere to SEAA/LAC policies and bylaws.

2. Program Outreach Coordinator (June 8 – Aug 18)

Under the direction of the LAC Director, the Program Outreach Coordinator will coordinate the SEAA/LAC community outreach and community engagement initiatives; will work to increase the organization's presence in the community and online. Responsible to the Director, the Program Outreach Coordinator will develop and execute effective community outreach initiatives which build new relationships and enhance existing relationships with patrons, businesses and organizations; develop and deliver marketing and advertising strategies which increase awareness of all SEAA/LAC programs and services and attract greater sponsors and donors; use traditional media and social media to enhance SEAA/LAC's visibility within the community; assist in and day to day operations of the Leamington Arts Centre; maintain a positive and professional attitude; display productive and accurate workmanship; adhere to SEAA/LAC policies and bylaws.

Assistant Program Coordinator

I am very grateful I was able to get the opportunity to work as the Assistant Program Coordinator at the Leamington Arts Centre. Throughout this position I was able to help the Director of the gallery and its staff to run the arts centre as well as help with the planning and execution of different events such as Arts @ The Marina. During my time at the gallery I was able to help the monthly transition between shows by taking down artwork and putting up the new shows, and coordinating lighting for each show.

This position has helped me develop many new skills. I have learned how to use different software programs to create flyers, posters, pamphlets etc.. I have also learned how to use different data bases which are used to keep track of our members at the LAC and to keep an inventory of what we currently have in the gift shop. At the end of each month while taking down artwork and coordinating the gallery, I learned how to properly handle artwork to avoid any damage, to hang up the artwork using our hanging system, and how to light the gallery properly using spotlights and focusing on main focal points.

While planning and executing different larger events held by the gallery I was able to see the amount of work that is put into such events. With Arts @ the Marina, we not only had to register and take care of the vendors, but also schedule musicians, sell raffle tickets, and set up.

Harmony Shaw
Assistant Program Coordinator

Program Outreach Coordinator

During my time working as the Program Outreach Coordinator at the LAC, I was given the opportunity to learn a lot about what it takes to run a gallery, and how to be a contributing member of the arts community. My employment allowed me to build on my pre-existing skills, but in a real world work environment, an opportunity for which I am extremely grateful.

As the Program Outreach Coordinator, I was responsible for jobs such as; designing advertisements and posters, updating the LAC website, assisting in the setting up and taking down of various exhibitions, and ensuring the visitors experience at the LAC was a positive one. Over the course of the summer I was able to learn about the business side of running an art gallery as well. I was able to help coordinate and set up events such as Arts @ The Marina and the opening receptions for exhibitions. I also got to manage memberships, merchandize the gift shop, build relationships with local artists, and experience some of the administrative work that goes on to ensure the gallery is functioning properly.

At the LAC, I was able to do work I enjoyed, in a friendly environment, with a great team of staff. The community the LAC has built is something truly impressive, and I feel privileged to be a part of it. I would recommend the LAC not only as a place of work, but also as an experience overall. I've learned a lot over the course of my employment with the LAC, and feel vastly more prepared to continue work in the arts community.



Eric Kirwin
Program Outreach Coordinator

Secondary School Co-op Placement

Co-op education is a grade 11 or 12 program in which the school and community organizations co-operate to provide a unique learning opportunity for students. This program provides an opportunity to senior students to earn out-of-school credits towards graduation that complement a specific in-school course. Co-operative education is an opportunity for students to build confidence and maturity, and to develop career goals and valuable skills. Enrolment in the program is limited and the selection of candidates is determined by the availability of placements and in-school course component, suitability of the applicant and permission of a parent/guardian.

Assistant Program Coordinator (January – June 2017)

Bailey Harder, a student from Leamington District Secondary School, completed his Co-op course at the Leamington Arts Centre from January to June 2017. Bailey was a valuable help and assisted with a variety of duties from office, administration and clerical assistance, docent, event set up and coordination and facility maintenance.

Members

The South Essex Arts Association/ Leamington Arts Centre seeks donations from individuals as members and donors to support vital programming such as exhibitions, events and education programs. The South Essex Arts Association wishes to acknowledge and recognize the generosity of new and renewing members whose gifts were received in 2017.

LIFETIME MEMBERS

Dr. and Mrs. Kelley
George Alles
Harold Burton
Harry Enns
Ken Friesen
Pat O'Heron
Phyllis Nelson
Walter McGregor

HONORARY

Anna Lamarche
Caesars Windsor
Chad Riley
Highbury Canco
Lakeside Bakery
Leamington Lions Club
Speedprint Ltd
WFCU Credit Union
Windsor Endowment
for the Arts

CHAMPION OF THE ARTS (500+)

John and Patricia Haynes

PATRON OF THE ARTS (250+)

Allen and Marilyn Scase
Mary Anne Kazuke

FRIEND OF THE ARTS (100+)

Joel Westlake
Gail Grant
Georgia Parsons
Marg Ross

NOT FOR PROFIT (\$50)

Essex Kent Mennonite
Leamington District
Secondary School

FAMILY (\$40)

Audrian Hutchinson
Brigitte Hanchard
Jan & Danny Bateman
Lloyd and Marilyn Brown-John
Paul Yssennagger
Peter and Astrid Tobin
Tony and Lois Duncan

INDIVIDUAL (\$30)

Ann Seigel-Roberston
Arlene Sinasac
Beth Anne de Souza
Carol Caruthers
Janet Chesterfield
Jeff Hagan
Lorraine Maurice
Madeline Butler
Mike Thibodeau
Penny Belluz
Renee Helling
Sandra McAdam
Sheila McBrayne
Shirley Bigelow
Tim Wilkinson
Shelly Quick

STUDENT (\$20)

Karlene Quellette



The LAC is a not-for-profit organization reliant on community support.

ARTISTS (\$25)

Alice Sacharoff
Anissa Noakes
Anita Pistor
Anne Benedict
Anthony B. Collins
Arlene Murphy
Barbara Jean Jack
Barbara Alkemade
Betty McCready
Beth Ann de Souza
Bill Sutherland
Brandy Martin
Brenda Henry
Brianne Taggart
Carol A. Winters
Carol Carruthers
Carol Dayus
Carolyn Hardy
Carolynn Queale
Catherine Johnston
Chao Zhao
Charlotte McLellan
Charly Badaoui
Cheryl Scorrar
Chris Morton
Chris Newman
Christiana Tagliapietra
Christina Thibert
Cris Kohl
Kathryn Paddick
Dawn Lavoie-Walters
Debi Shervington
Deborah Cameron
Del Stewart
Denise Beauvais
Denise Busko
Derek Friesen
Donald Waffle
Dorit Girash
Douglas Bedard
Elsie Edwards
Eric Naylor
Eva Klassen
Gail Hunt
Gerry Hucko
Glen Donaldson
Gloria Gellner
Gord Grisenthwaite

Greg DeHetre
Hannah Towle
Heather Mallaby
Heather-Anne Kilgour
Irena Vucajnk
Irina Teske
James Mctavish
Jan Dugdale
Jane Cox
Janet Domarchuk
Jerry Lawhead
Jesse Gledhill
Jillian Suta
Jim Stein
Joan Pival
Joan Baller
Joan Watton
JoAnne Zamparo
John Larsh
Joy O'Brien
Judith Dzandzalas
Julie Gahwiler
Justin Latam
Karen Duncan
Katherine Roth
Kathryn Paddick
Kelsey VanPoucke
Ken Grahame
Kristyn Dunnion
Laura Brinkman
Laurie Hussey
Laurie Langford
Laurie Masse
Lee-Anne Settingington
Leigh Archibaid
Leon A. Barlow
Leslie Walsh
Lorie Hussey
Luanne Ribble
Mari Biehn
Marilyn Fox
Martin Brandy
Mary Filipchuk
Mary Hirt

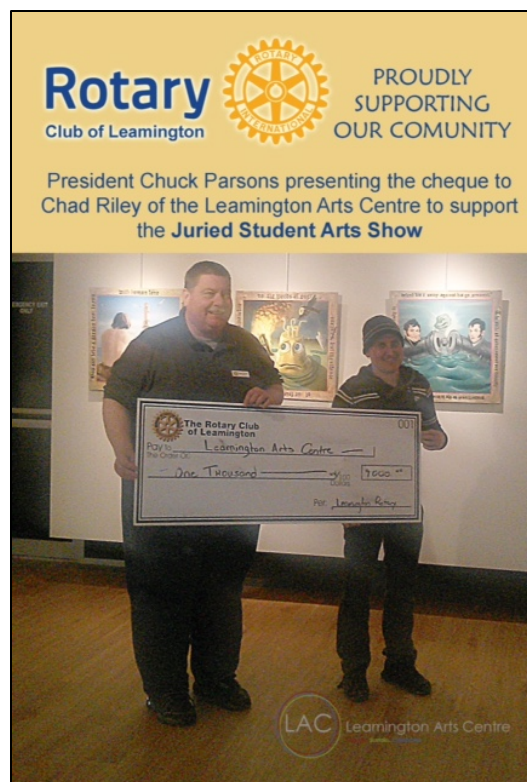
Mary Kendrick
Mary Jane Nohra
Mary Newland
Michael Mastronardi
Michael Paladeau
Michelle Bruner
Mike Ondrovicik
Monique Hebert
Moreen Roth
Nancy Longeway
Pat Beemer
Patricia Kristy
Patti Wheeler
Paul C. Deschamps
Pavlo Lopata
Penny Belluz
Pete Dzandzalas
Renee Helling-Laur
Richard Green
Robert Bishop
Ron Vermeiren
Rosalind Knight
Rose Harper
Rosemary Dzus
Rosy McGregor
Ruth Woodsit
Ryan Horvath
Sarah Rupert
Sean Merritt
Sylvia Kowalewski
Terra Koop
Tim O'Brien
Valerie Gujban
Vicki McKay
Wendy Perley

Corporate Sponsors/Partners

The South Essex Arts Association/ Leamington Arts Centre seeks sponsorships from corporations and other organization in partnership to support vital programing such as exhibitions, events and education programs. The South Essex Arts Association wishes to acknowledge and recognize the generosity of new and renewing sponsors whose gifts were received in 2017.

Aleksander Estate Winery
Arts Council Windsor & Region
Art Gallery of Windsor
Art Works
ArtBuild Ontario
Blackburn Radio
Bradt's Butcher Block
Brandsource Gabriele
Business Improvement Area (BIA)
Caesars Windsor
Chamber of Commerce, Leamington
Chuck's Roadhouse
Country FM 95.9
Colasanti's Tropical Gardens
Dr. George & Dr. Dainty Dentistry
Festival Tents & Party Rentals
Framing by Anna
Friends of Point Pelee
Gilligan's Neighbourhood Pub
Highbury Canco
Hub International
Imagine Cinema
Ives Insurance
Jose's Bar & Grill
Kenzart
Lakeside Bakery
Leamington District Memorial Hospital
Leamington Lions Club
Leamington BIA
Leamington Lions Club
Lesson Lounge
Oak Farms
Pelee Island Winery
Mark Caza Photography
Photography & Framing by Anna
Rotary Club of Leamington
Seawolf Communications
Security One
Shooters Photography Club
Southpoint Publishing
Speedprint Ltd.

The Bank Theatre/Sun Parlour Players
Community Theatre
The Mix 96.7FM
The Municipality of the Town of Leamington
The Town of Kingsville
Tim Horton's Café & Bake Shop
The Lesson Lounge
Tourism Windsor Essex & Pelee Island (TWEPI)
Wave Direct
Wheatley Journal
Windsor Endowment for the Arts (WEA)
Windsor Family Credit Union (WFCU)
Windsor Tarot
WindsoriteDOTca



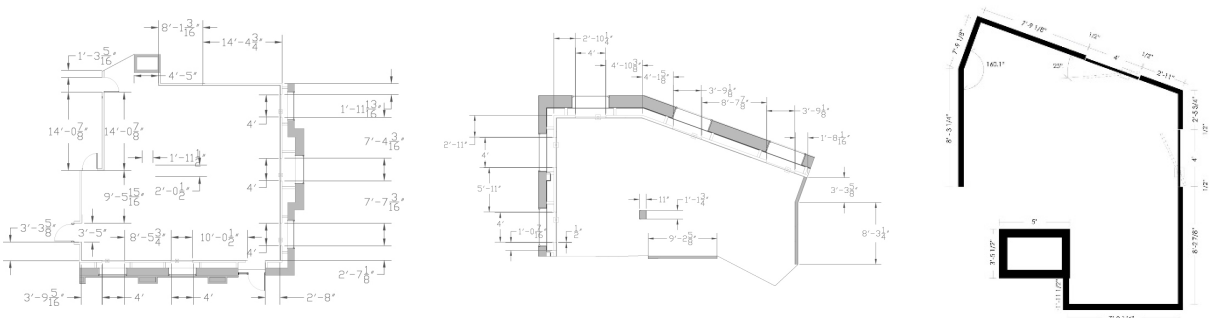
Create. Sustain. Celebrate the Arts.

Exhibitions

The LAC is a state of the art gallery which offers three exhibition spaces with over 300 linear feet of continuous wall space and 2000sq/ft of floor space a gift shop, art classes, workshops and meeting spaces. The LAC is one of the area's paramount places to view modern art with an emphasis on local and aspiring artists and artisans.

The LAC takes great pride in exhibits we feature and the artists we select to showcase. Each exhibition season from January through December, the LAC offers up to 36 different exhibits on display. Exhibitions change each month so there is always something new to see from solo artist exhibits, private and gallery collections, themed group exhibits, community clubs and school exhibits and more.

Admission to the LAC is always free, donations appreciated. And be sure to join us each month for the new exhibits opening receptions where you can meet the artists, see their works, meet new people, network and collaborate with other creative minds, share in the enjoyment of the arts and enjoy light refreshments on the house!



2017 Exhibitions

January 2 – January 30



LAC Leamington Arts Centre
Create, Sustain, Celebrate

Anything's Possible: 2017 Amateur PHOTO CONTEST

historical colourful black & white

Deadline: Fri. Dec 23, 4pm

\$900 of Photo Prizes to be Won!

Enter Your Best 8x10" Photo Prints in Each Category. We Mat them for You!
All Photos Entered are Displayed and Judged for a Chance to Win Prizes!
More info at: www.leamingtonartscentre.com

Generously Sponsored By:

SPEEDPRINT

Photography & Framing by Anna

KEEP CALM & COLOUR ON: group exhibit

Colouring isn't just for kids! Recent trends and research show that colouring can help to alleviate stress, promote wellness, calmness and focus while stimulating brain areas related to motor skills, senses and creativity. So put down your pen and highlighter, leave work aside and pick up a crayon or marker; enter your favourite coloured page or entire colouring book! This is an all ages show!

ANYTHING'S POSSIBLE: 2017 Amateur Photo Contest

Opening Reception & Awards: Fri Jan 13, 7pm
The LAC is proud to present its 2017 Anything's Possible amateur photo contest. This annual exhibit features striking photographs in 3 categories: historical, colourful, and Black & White.. With three prizes in each category, plus a People's Choice Award, its certain to delight and prove that Anything IS Possible!

Sponsored by: Speedprint & Framing by Anna



LAC Leamington Arts Centre

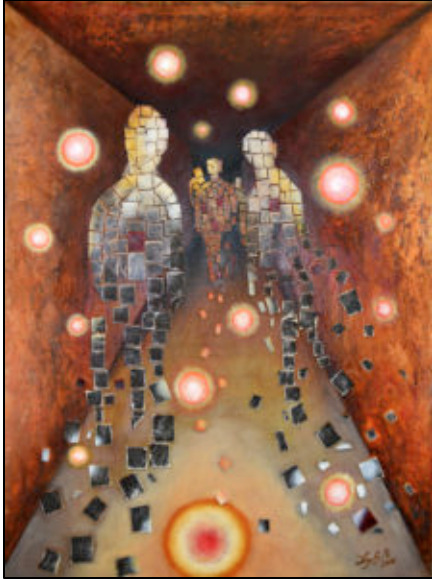
March 1 - March 26
Deadline to Enter: Sat Feb 27

KEEP CALM AND COLOUR ON

a colouring exhibition
for adults and kids

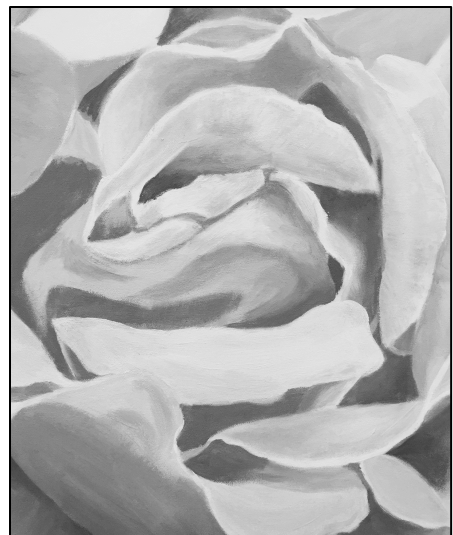
LEAMINGTON ARTS CENTRE
72 Talbot St. West
Leamington, ON
519-326-2711
www.leamingtonartscentre.com

February 2 – February 27



RETROSPECT 2006 – 2016: Leyla Munteanu

The exhibition is a retrospective 2006-2016, 10 years of art making. It will contain paintings in oil, acrylic, mixed media, watercolour, drawings and intaglio prints. It will be a glimpse from all the series I was working on these past years, with the old and the new hanging side by side or layered.



**BLOOM: SENIOR SHOW:
Leamington District Secondary School**

Leamington District Secondary Senior Students collaborate in this group exhibit at the LAC.

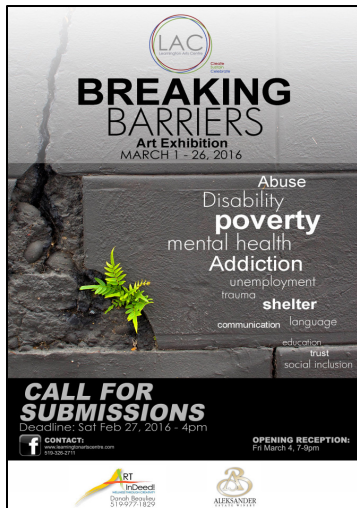


BUILD: an exhibition built by you

This is an exhibition where creativity comes together, literally! We all grew up playing with toy building blocks and model sets and today they are bigger than ever. From kids to adults everyone still enjoys building. Enter your favorite BUILD today!

Lego, Magformers, Mega Bloks, K'Nex, Constructs, Lincoln Logs, Lite Brix, Meccano, Erector Sets, Scale Models, Popsicle Sticks...

March 1 – March 26



BREAKING BARRIERS: group exhibit

The Breaking Barriers exhibition's focus is to create an understanding of lived experiences. The exhibition seeks to highlight resilience and resourcefulness in coping with barriers. A barrier can be anything that one must overcome to reach a goal, even if the goal is simply to survive. Breaking Barriers is an exhibition for creative expression that empowers, builds awareness, and facilitates partnerships and collaborations. Sponsored by: Art Indeed & Aleksander Estate Winery.

SURELY SOME RESOLUTION: Rosemary Dzus

My work involves the external appearance and the internal workings of some families' lives. It is an attempt to bridge childish fragmented rememberings and the projected impression of a family where abuse has occurred. The title of this installation is a variation on one of the lines in the poem, "*The Second Coming*," by W.B. Yeats. I have always loved that particular poem; to me it speaks of violence, discord, chaos, as well as the hope and will to survive that often spring out of terrible events.



The figures in the paintings at the gallery entrance take on a mythic status as they struggle with their harsh environment, which echoes a still harsher interior struggle. Moving into the gallery, what is shown is the destructive root of the struggle — unacknowledged violence and abuse, in a series of fragmented images. The "beasts" and ravens are observers from the non-human world, who bear witness in silence.



THE STILL SPEAK: Deborah Cameron

The exhibition project I am presenting is titled, "*The Still Speaks*". I want to say on canvas, using the voice of my heart, that deep calls to deep...my paintings are informing me, awakening me, pointing me to things about myself that I am not yet conscious of. What an adventure of discovery!

April 26 – May 28

JURIED STUDENT ART SHOW: 19th Annual

The LAC presents the 19th Annual Juried Student Art Show featuring works by Secondary Students from across Essex County. Categories include: Acrylic Painting, Oil Painting, Drawing, Sculpture, Mixed Media, Photography, Digital Media and Film. \$1200 IN CASH PRIZES will be awarded in EACH Category with a People's Choice Award at the end of the month. Also, as a part of this event, a \$100 "Future Artist" Award will be granted to the graduating student who showcases the most artistic potential. Sponsored by: Rotary Club of Leamington & the Kiwanis Club

June 2 – June 28



CRAFT FAIR IN THE GALLERY: group exhibit

The LAC presents its new spring craft show in the gallery featuring a variety of local and handmade jewelry, pottery, candles, metal crafts, furniture, home décor, glassware, mixed media, needlework, paper crafts, scrapbooking, leatherwork & more!

REACH FOR THE SKY: Leamington Flock Fest

The sky is an endless symbol for the longing to break free, to achieve heights, to connect with others and ourselves. The bird is always reaching for the sky, to fly at new heights; it is an inspiration for our earthbound body and our soul's eternal desire for limitless being. The group exhibition "Reach for the Sky" is hosted by 3rd Annual Leamington Flock Fest and will showcase artists flying their highest, overcoming limitations and showcasing inspirational works of art. Join us!





ART ALIVE: Don Waffle

Don Waffle's strikingly realistic art brings people to life, in portraits and in their activities. These range from a toddler stretching high to barely reach the keys of the piano, to a party setting out on a winter sleigh-ride, to a smiling lass pouring a glass from the Guinness tap at the Spitfire Arms Alehouse in Windsor, Nova Scotia. Another painting captures a most fleeting moment in time, when a golden sunrise catches the eastern wall of The Rockies; as seen from a Westjet flying far overhead. This unique exhibit extends to include a replica scale model created by the artist, of the MARK IX Spitfire flown by F/L Gerry Billing in WW2.

July 5 – July 31

U17: 2017 SEAA/LAC Members Show & Sale

The 2017 annual members show and sale celebrates the strength, vitality, creativity and wealth of talent found within the Leamington Arts Centre (LAC)/ South Essex Arts Association (SEAA). Each year, the diverse and outstanding works by our members creates an exciting and engaging exhibition whereby artists are able to showcase, share and sell their work. The exhibition creates a platform for artists to network with peers to develop their skills and experiences.



WAC: Walkerville Artists' Co-op Show & Sale

Opening Reception: Fri June 2, 7-9pm
 Walkerville Artists' Co-op is an art gallery, showcasing more than 35 artists, artisans and authors in Windsor, Ontario Canada. Shown and sold in the gallery are paintings, pottery, photography, mixed media, encaustics, sculptures, books, body products, jewellery, art glass, fabric arts and hand woven baskets...

JOURNEY OF THE MONARCHS: Maria Jose

Opening Reception: Fri June 2, 7-9pm
From the southernmost tip of Canada to the tree forests in Mexico, Monarch Butterflies make one of the largest mass migrations in the world. On this 4,000 km journey, Point Pelee is an important stop for Monarchs making their way South for the winter. On the 150th anniversary of Canada, I hope to highlight this incredible natural phenomenon that occurs right in the heart of Leamington through her love for painting Monarchs and capturing the beauty of these spectacular creatures.



August 2 – August 28



ALONG MY WAY: Chris Morton

"Along My Way" is artist Chris Morton's tribute to his love of the Canadian landscape. These paintings are inspired by actual settings in and around Ontario. Morton, the protege of world renowned artist George McLean, grew up in Owen Sound, Ontario in the picturesque Bruce-Grey area. His family took yearly trips to the magnificent Algonquin Provincial Park. This area, stretching from Georgian Bay to the Nipissing District, is the primary inspiration for much of his work. Chris has always been fascinated by the natural world and since his earliest years, he would venture out into the forest to study its ways. The changing of the seasons, the diversity of plant life, the ever changing light effects and the abundance of nature would become his obsession. Painting and drawing was the best way he knew how to communicate what he was learning to the world.



FIELD STUDIES: Sophie Hinch

Where one hails from and where they now live are two of the most significant facts about anyone. Place is a central facet of someone's identity. Maps affect how people define identities and places come to signify and mirror people. Maps were created to make sense of the world around us, to record a difficult terrain that might otherwise be forgotten, or reveal to others a path across unfamiliar lands. Maps can be redrawn or reworked. They can be followed, or only serve as inspiration. I want to discover what is a place beyond a point on a map? My work aims to translate scientific information into simplified visual language. I condense vast natural forms into diagrams. I enjoy experimenting with the physical act of painting and how this relates to abstractions I find in nature. My biomorphic drawings, earthworks, and collages are made of flowing lines and shapes. I map my surroundings and experiences in an effort to remember transient moments. I want to show a place without literally depicting it, but rather convey the feeling or memory it evokes.

THE FOUR HOUSEWIVES OF THE APOCALYPSE: Laurie Langford

The title of this exhibition comes from a thought I once had. Throughout history, women temporarily took on traditional male roles when sheer numbers were needed, but then had to step aside and resume their expected housewife duties once the goal had been reached. Then the men made the rules. What if every woman was allowed to progress in those traditional male roles, in particular as fighters, but stopped doing traditional female tasks, like picking up socks, having babies, entertaining, or reading to the kids at night? My thought was that social order would deteriorate and, eventually, there would be an apocalypse. Each mannequin in this exhibition represents a time of social upheaval during which women were briefly fighters. As you look closely at their costumes, however, their choice of weapons and their clothing reflect the women's work they were still expected to do.



August 30 – September 24

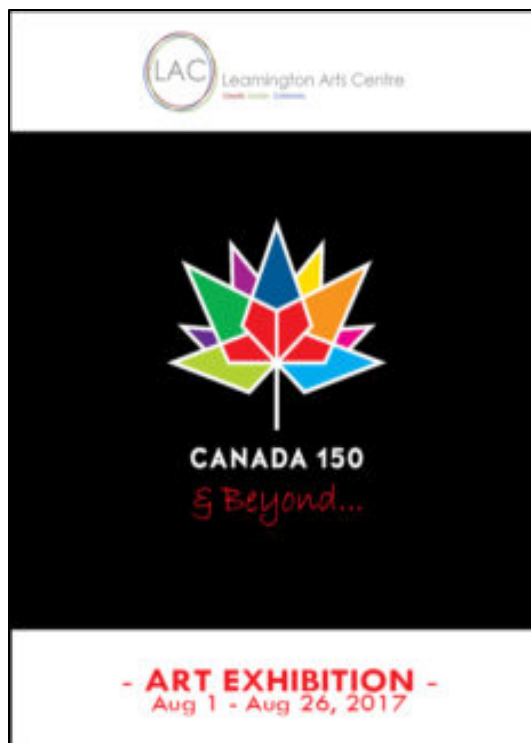


FAMILIAR FACES: Janet Domarchuk

Booking the Southpoint Sun gallery at the LAC for an exhibit was an exciting idea. So I did. I had unwittingly become a commissioned artist some thirty years ago. Familiar to most commissions was a common subject matter: rock and roll. With that in mind, I deliberately chose this singular theme and painted my first exhibit. So please, come as you are and have a look. All twenty-one portraits promise to look right back at you. Prints for all the paintings will be available to order and if I have left out your favourite, talk to me. If movie stars or sports heroes are more your thing, we can talk about that too. Looking forward to seeing you all this August.

CANADA 150 & BEYOND: group exhibit

Canada 150 & Beyond is an exhibit that proudly celebrates Canada's 150th anniversary of Confederation – our heritage and history to our future and goals. What does it mean to you to be Canadian? What do you celebrate about Canada? Topics of interest may include diversity and inclusion, reconciliation from nation to nation with Indigenous people, the environment and youth. This is a non-juried exhibition open to everyone, youth and adults in any medium. All artwork will be displayed and featured for the month of August with free gallery admission to all visitors.

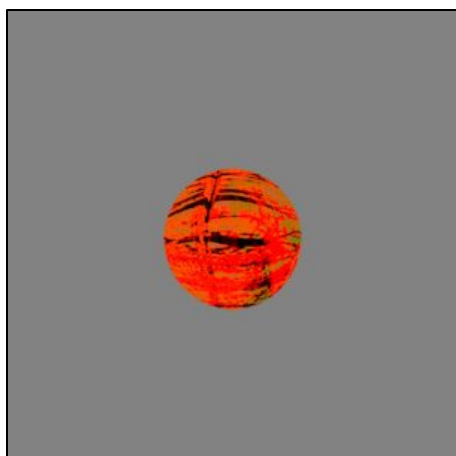


PASSIONATE LIVING: Deborah Cameron

Passion manifested can indicate many things. For me, it does not necessarily indicate rightness, but a leap of faith to be fully invested in the jump!



September 27 – October 22



REVELATION: Ina Vu (aka Vucajnk)

The Revelation is Ina's artist retrospective of her life in diverse cultural environments and social circumstances that stirred her art expressions through self-directed inquiry and the various medium. Through her art, she is expressing a personal journey from disillusionment to a self-discovery in the resolutions with the predetermined value systems.

LIGHT – VISION – EMOTION: Phos 3 Photography

This show features a diverse variety of photographs depicting some of the interests of the husband and wife team – Dave Paddick and Kathryn Parent. "The world is our studio ... when we are not on a shoot you will often find us storm chasing or driving down country roads photographing abandoned houses or whatever else catches our eye." Their unique name "Phos³" is a powerful parallel to their work: "Phos" pronounced (Foss = Boss), is the Greek word for light. Photography is all about light, capturing it and controlling it. Phos is combined with the superscript number ³, which represents a number of things, it's multi-dimensional, the number 3 is a power number so a few examples are – perfect balance, aesthetics, the 3 elements of earth, black, white and colour etc... and ... Light·Vision·Emotion. The vision is the composition of the frame. It's the artist's eye... "Hopefully if we have done our job right using light and our vision, it will stimulate some sort of an emotion within you. 'We Shoot to Thrill!'" .





FATES OF AUTHORS OF THE NEW TESTAMENT: Bryan S. Halls

These nine men that wrote the books of the "New Testament" lived a glorious life spreading the word of Christ, though ultimately their lives came to an end through martyrdom, the exception being Luke who spent his days creating Icons. These men show us today that nothing should come between you and your faith, and never shall you turn your back on your god, no matter how the gauntlet of temptation or oppression is thrown down. As Christians we must trust in our lord and know that everything that happen comes with a reason, and just like the lives of many individuals within the pages of the bible show, unannounced to you there is a greater reason for the follies and perils in our lives and all god asks is to trust in him, and better days are to come whether that be in life or death.

September 27 – October 22

TRANSITIONS: Douglas Bedard DKN Blues

When the Director Chad Riley asked if I would be interested in having an exhibition on short notice, what came to mind was the artwork that previous Curators had chosen in past juried exhibitions and invitationals throughout the Detroit, Michigan area and South Western Ontario. I have picked small and medium sized works along with some work never exhibited, including new work. They vary in theme, style, medium, providing a wide range of art, making it an eclectic exhibition that is hopefully, thought provoking. Any good work of art should weather the years and hold a wall when displayed and stand alone if it has any merit. I am excited to put that thought to the test. A long time professor of classical Studies and author, Stephen Bertman, has been a supporter of my artwork for the past 35+ years. He was the one person who suggested and encouraged me to do my last solo exhibit in 2015 at the Leamington Arts Centre on the theme of boxing, called DKNBLUES. It is only fitting that I dedicate this exhibition TRANSITIONS too my friend Stephen Bertman. This one is for you!



SURREALISM IN ACRYLIC: Carolyn Hardy

Carolyn's acrylic paintings are a sea of colour swimming with symbolism. They have the ability to move one from reality to imagination. They will take you away to another world. A world of emotion. A world beyond the physical realm. The world of dreams, light, and spiritual beings. They say that we are more than flesh and bones, that we are made of energy. That we never die. We sail through space and time continually transcending. "When the doors of perception are cleansed, the world appears as it really is... infinite."



September 27 – October 22

MEMEBERS SHOW & SALE:

Shooters Photography Club

Have passion for photography? Interested in being involved and gaining some knowledge and experience? See what the Shooters Club members have been up to... Get inspired to pull out your old camera, or fall in love with a beautiful landscape. The Shooters Show and Sale will definitely have something to catch your eye!

Shooters

Photography Club



FAR OUT SHOW: group exhibit

This exhibition's focus is to highlight and showcase those offbeat, avant-guard, radical and/or extreme works of art that make us all think outside the box and push the limits of expressionism in contemporary art.



PAPER CUTS: Ken Friesen

Tried (Tired?) Images Revisited

September 27 – October 22

**A SIGNATURE CHRISTMAS:
indoor artist market**

The LAC presents its annual indoor Christmas Arts & Crafts show. Featuring artists and artisans in a variety of mediums; photography, painting, jewelry, literary arts, crafts and more... This beautiful month long "gift shop" style exhibition has many great deals so come enjoy the works in a warm Christmas setting.



2017 Events & Programs



WELLNESS THROUGH ARTS PROGRAM Ongoing Through 2017

The Leamington Arts Centre (LAC) / South Essex Arts Association (SEAA) are proud to announce in partnership with the Leamington District Memorial Hospital (LDMH) the Wellness Through Arts Program. The first stage of this program can be viewed at the LDMH commencing Thursday, January 30th in the new Diagnostic Imaging Department on the lower level. As the program expands, it will embrace and transform a variety of additional spaces within the hospital. Interested Artists, please contact the LAC.

The Wellness Through Arts Program at the Leamington District Memorial Hospital is dedicated to the well-being of patients, families, caregivers and the community. The program's aim is to integrate the creative arts and aesthetics into the healing spaces within the hospital by reducing stress and promoting calming environments that replace anxiety with hope and holistic well-being. The program is made possible through the support of local artists, the Leamington District Memorial Hospital and the Leamington Arts Centre/ South Essex Arts Association. We welcome you to share in the spaces, to enjoy the beauty and serenity it may bring to you and your loved ones.

A1 CHINESE FUNDRAISER FOR THE LAC Monday March 14, 11am – 9pm

Please join us on Monday March 14th between 11am and 9pm for lunch or dinner at the A1 Chinese Restaurant at 321 Erie Street South, Leamington. Let your server know you are there to support us and 55% of your bill will go directly to the SEAA/LAC. We are a not for profit charitable organization reliant on community support. Hope to see you there!



MARCH MASQUERADE Friday March 31, 7pm onward

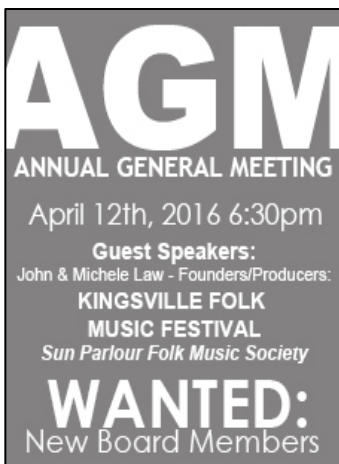
The MARCH MASQUERADE is an evening filled with exciting activities including guest photography by Mark Caza, live jazz music by James Daniels and a free play plinko game with prizes, Life Purpose Palm Analysis by Rosmary Heenan, Tarot Readings by Windsor Tarot, a silent auction and cash wine bar. Visitors will also enjoy the Breaking Barriers, The Still Speaks and Surely Some Resolution exhibits on display, the Signature Gift Shop as well as the Erie Quest Heritage Ship Wreck Museum. All proceeds from this event will help to support the South Essex Arts Association/Leamington Arts Centre. Thank you to our generous sponsors!



Please join us on Monday April 10th between 11am and 10pm for lunch or dinner at the Gilligan's Neighbourhood Pub, 26 Erie St. North, Leamington. Let your server know you are there to support us and a portion of your bill will go directly to the SEAA/LAC. We are a not for profit charitable organization reliant on community support. Hope to see you there!

CANADA 150 SHIPWRECKS:
Cris Kohl & Joan Forsberg
Friday May 12, 7pm

A program all about 1867 ships and shipwrecks presented by Cris Kohl and Joan Forsberg, free admission. Books, DVDs and other shipwreck history items will be for sale.



ANNUAL GENERAL MEETING
Tuesday April 12, 6:30pm

Guest Speakers: John & Michelle Law: Founders/Producers of Kingsville Folk Music Festival/Sun Parlour Folk Music Society. All Welcome. Seeking new board members, please contact us if you are interested in sharing your time, energy and passion for the arts with us.



Leamington Arts Centre
Create. Sustain. Celebrate.

25TH ANNIVERSARY



ARTS

AT THE

MARINA

July 1 & July 2

ARTS & CRAFTS SHOW
Free Admission



ARTS @ THE MARINA
July 1 & 2, 10am – 5pm

Bring the whole family out to enjoy a wide variety of artwork and entertainment at Leamington's beautiful waterfront.

With dozens of artists displaying unique and creative pieces spread out across the park grounds. Come for a stroll to see new interesting local and area wide artist works.

CHILDREN'S ART ACTIVITIES! LIVE MUSIC and FOOD! FREE ADMISSION! Donations greatly appreciated.

2017 Signature Gifts

Our shop boasts a wide selection of quality original local artworks, one of a kind gifts, jewelry, music, books, as well as children's books and anything to stimulate creative potential. Perfect Unique Gifts for Weddings, Anniversaries and any occasions for that someone special...



Art Supplies at the LAC

Since 2016 the LAC has been carrying a variety of art supplies to support local artists!

Name brands such as Golden, Amsterdam, Lukas, PrismaColor, Canson, Micron, Finetec, PrismaColor, Koi, and more!

Acrylic paints, oil paints, canvases, palettes, palette knives, watercolour paints, watercolour pencils, watercolour paper, frames, gesso, coloured pencils, graphite pencils, pen & ink, fixatives, clay, sketch pads & paper, printmaking rollers and cutters!

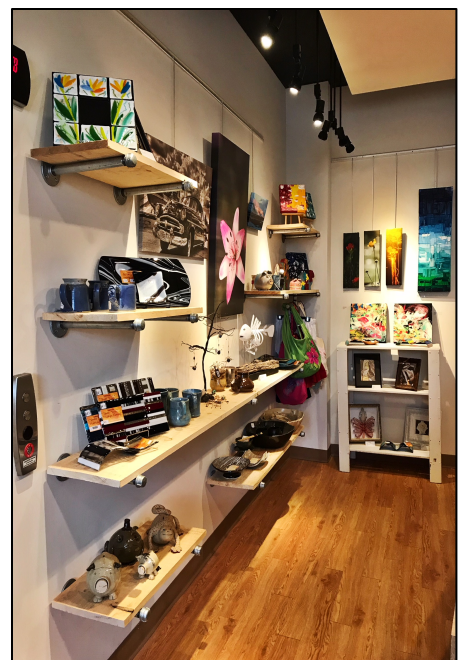


2017 Signature Gifts Exhibitors

Alex Klassen
 Andrea Mercier
 Anna Boudreau
 Anna Lemarche
 Anthony Youssef
 Arlene Murphy
 Ashely Iles
 Barbara Alkemade
 Bob Blakeslee
 Brandy Martin
 Brian Sweet
 Biblioasis
 Catherine Watson
 Chad Riley
 Charlotte MacLeallan
 Charly Badaoui
 Chris Basden
 Chris Newman
 Christina Thibert
 Claudette Schiller
 Coleen Thibert
 Cris Kohl
 Dave Atkinson
 Dave Paddick
 David Beasley
 Dawn Marie Kresan
 Dennis White
 Don Waffle
 Dorit Girash
 Douglas Bornn
 Deborah Cameron
 Elizabeth Anne Hebert
 Elizabeth Gaye MacDonald
 Ellen Marie Cooper
 Eric Naylor
 Friends of Point Pelee
 Gail Grant
 Gerry Hucko
 Gloria Gelner
 Geri Thibodeau
 Hannah Towle
 Harold Burton
 Henrietta O'Neil
 Irena Vucajnk
 Irina Teske
 Jan Bateman
 Jim McTavish
 Jim Oates

Jim Stein
 Jo Parsons
 Joan Pival
 Joe & Christina Taliapetra
 John Haynes
 John Larsh
 Jordan Burton
 Julie Bell
 Julie Gahwiler
 Justin Latam
 Joe & Christiana Tagliapietra
 Karen Ross
 Kathryn Parent
 Kathy Klym
 Kelly MacLeallan
 Ken Friessen
 Kim Seguin
 Klas Squared
 Kristyn Dunnion
 Laurie Langford
 Leona Maxwell
 Leyla Munteanu
 Linda Bertrand
 Lynda Ruddock Rousseau
 Maeve Omstead Johnston
 Marg Ross
 Marnie Parsons
 Mary Kendrick
 Mary Newland
 Mayas Abul Sattar
 Michael Karel
 Michelle DeLacey Bruner
 Michelle Dobrin
 Mindy Angers
 Monique Hebert
 Nelcy Martinez
 Nicole Barron
 Patti Wheeler
 Pelee Music
 Peter Olson
 Petroglyph Soaps
 Renatta Pattia
 Robert Gervais
 Rosalind Knight
 Ruth Driedger
 Ruth Woodsit

Ron & Louise Vermeiren
 Ryan Horvath
 Sally LePla
 Sandi Collins
 Sarah Rupert
 Shelley Craig
 Stephanie Desjardins
 Susan Dupont Baptista
 Susan Ross
 Terry Dolle
 Todd & Sherry Stahl
 Tom Omstead
 Tracey Rodgers
 Vesna Bailey
 Vicki McKay
 Victoria Branches
 Wendy Perley



Permanent Collection



Henry Collection historic art & artifacts

The Henry Collection, donated by the Henry Family, is a permanent collection of the SEAA and is housed at the Leamington Arts Centre. The Collection features various art and artifacts collected from all over the globe including works from far East Asia and North America.

Local and Culturally Significant Artwork

The SEAA/LAC's collection is of great pride amongst its staff, members, and constituents. We take seriously our mission to enrich culture through the collection and preservation of art. Since its founding in 1971, the SEAA/LAC has acquired hundreds of works of art, collecting in the areas of Canadian and international historical and contemporary art.

The collection has been built both through donated gifts and considered purchases. Approximately 90% of Gallery acquisitions come from private donors—often dedicated collectors looking for a permanent home for their works where they will be appreciated, cared for, and put on display for others to enjoy. Artists also donate their work, such as Jeet Aulakh's *Namo Ek Yoge*; 2010 oil on canvas. It is because of the generosity of these donors that the SEAA/LAC enjoys the position it holds as a collecting institution.



Erie Quest Heritage Shipwreck Museum

Sadly, 2017 marks the end of the Erie Quest Shipwreck Museum. With the loss of Municipal funding and tourism interest the collection was dismantled mid-2017 and the collection space was renovated and repurposed for 2018.

About the Collection:

Treasure has been discovered in the waters of the western basin of Lake Erie, but it does not take the form of gold coins or jewels. The treasure is the profusion of shipwrecks. Since the mid 1800's over two hundred and seventy-five ships have sunk in the Pelee Passage and western end of Lake Erie. Currently there are over sixty known locations of shipwreck sites, all within a short boat trip of Leamington and its first rate marina.

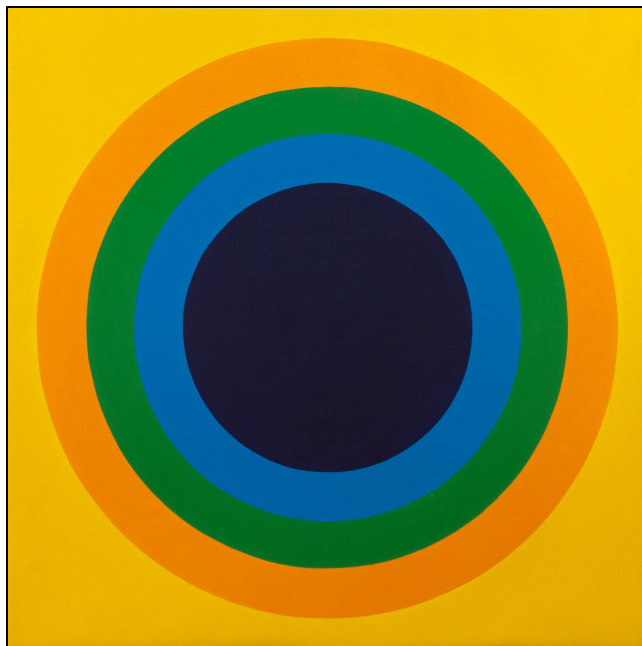


Collections Assistant

The LAC hired a Collections Assistant, made possible through a job placement funding grant from the South Essex Community Council. Karlene Ouellette was hired and from April through July and in that time accessioned 134 works in the SEAA/LAC collection and over 300 in the Henry Collection.

Collections Assistant Job Duties:

Responsible to the LAC Director and the South Essex Arts Association Board of Directors; is responsible for taking inventory, measuring, evaluating, describing, photographing, research, cataloguing and recording the contents of the collection in the database; assigning unique accession numbers used to tie records related to it such as invoices and provenance, or ownership trail and exhibition history. The collections assistant catalogs works under their responsibility according to set standards and protocol; oversee the physical care of collection contents; monitors temperature and humidity levels, pest infestation and cleaning routines; proper storage, including selection of archival supplies; when on loan the Collections Assistant aids in facilitating, packing, delivery logistics and safeguarding measures and practices.



2017 Notable New Acquisitions: SEAA Collection



Untitled
1992. 92cm x 92cm; Lighography
Harold Klunder

Harold Klunder is one of Canada's leading painters. He has exhibited constantly for more than three decades since his first solo show at Sable-Castelli Gallery in 1976. Born in The Netherlands in 1943 Harold Klunder immigrated to Canada in 1952. He maintains three studios in Montreal, Flesherton (Ontario) and Pouch Cove (Newfoundland). His paintings are held in the permanent collections of the National Gallery of Canada, the Montreal Museum of Fine Arts, Art Gallery of Ontario, Art Gallery of Newfoundland and Labrador, The Museum of Contemporary Canadian Art, Museum London and the Winnipeg Art Gallery among many others. He uses a refined vocabulary of forms that are uniquely his to suggest ideas of vitality and transformation, of biology and duration, of identities that are mutable and of the still-unfolding history of painting itself. Klunder works on single paintings for years at a time and in so doing they become invested with a palpable sense of lived experience and vivid evidence of his effort to give shape to consciousness itself. In his recent, definitive book "Abstract Painting In Canada" Roald Nasgaard wrote that "A sense of the history of art (at least back to the seventeenth century) pervades Klunder's work, but not in any derivative or historicist way. His are no postmodern exercises of appropriation but something entirely internalized and personalized."

The Leamington Arts Centre would like to thank John and Patricia Haynes from Kingsville, ON for this generous donation.

2017 Notable New Acquisitions: SEAA Collection



Ben Jensen
Untitled

Date. 4.4 x 5.5cm; Acrylic on Canvas



Ben Jensen
Untitled

1977. 6.3cm x 7.9cm; Acrylic on Canvas

Ben Jensen was born in the Danish port town of Skive. Jensen is a self - taught, full time professional artist, and he has been painting for thirty years. Working primarily in oil, his work covers a wide spectrum of subjects, including street scenes, historic buildings and vistas of the northern wilderness special affinity for the sea and ships is reflected in his ever popular marine scenes. His works are found in the City of Toronto Archives, in municipal collections, as well as in private and corporate collections worldwide. He has exhibited in many one man shows as well as group shows.

The Leamington Arts Centre would like to thank Sheila Hartman of Belle River, ON for this generous donation.

2017 Notable New Acquisitions: SEAA Collection



Untitled

2017. 25 x 40 cm; Monoprint

John Haynes

Untitled

2017. 25 x 40cm; Monoprint

John Haynes

As far back as my memory takes me, art has been an important and meaningful part of my life. No matter what the setting happened to be, manipulating colours, shapes, media and design, gave me and still continues to give me, both pleasure and solace. And for that, I am very grateful. Reaching my 70's, I find that my expressions/creations in art reflect more and more my ponderings about life and existence. I find as I grow older that life is even more puzzling and layered and humorous than I once believed. And some of these impressions, reflections and views are evident in the art work I am currently producing which I call: Visual Comments. My larger works in this exhibition reflect some of the aspects of dread, wonder, puzzlement and humour that I feel regarding the future of humankind on our planet earth. The climate changes we must now endure year round; the ever increasing societal disconnections between the have's and the have not's; the ongoing whittling away of our Canadian democracy; and, the slam-bang incorporation of greed as a cornerstone of our society are all troubling and worth thinking about. As an obvious visual contrast, the smaller-sized art works in this exhibition are monoprints that were meditative and soothing for me to produce. Hopefully, they act as a counterbalance to the weight and scale of the larger paintings. I do consider these monoprints to be visual comments as well; but in a smaller and quieter way that lingers on colours, shapes and my love of playing with mixed media. The larger works are all acrylic paint on canvas; while the smaller monoprints are ink and mixed media on watercolour paper.

John Haynes

2017 Notable New Acquisitions: SEAA Collection



Steamer Pelee

1935. 38"x54.5"; Oil on Board

Harry J. Turner & Lloyd Bruner

**The Leamington Arts Centre would like to thank the Estate of Marianna Barrie,
c/o Graham Scott Enns, Bill Graham, Executor for this generous donation.**

Accolades



February 2017 with the support of the SEAA/LAC and Board of Directors, Chad Riley Director of the LAC applied and was accepted as a candidate to the **International Society of Appraisers** education program and began appraisal studies in the following courses:

Core Course in Appraisal Studies

This is the "original" complete appraisal methodology course for personal property appraising. Its thorough scope includes appraisal objectives, intended uses, market identification and analysis, research methods and skills, ethics and professional conduct, and a detailed presentation of report formats and checklists. This course sets the standards that others imitate.

Uniform Standards of Professional Appraisal Practice (USPAP)

The 15-hour Personal Property Uniform Standards of Professional Appraisal Practice (USPAP) material is designed to aid appraisers in all areas of appraisal practice seeking competency in the USPAP. This course is intended to fulfill the USPAP requirement for credentialed membership levels within professional personal property appraisal organization and will be taught by an active Personal Property Appraiser.

This course focuses on the requirements for ethical behavior and competent performance by appraisers that are set forth in the USPAP. The course material emphasizes the role of the appraiser and the impartiality associated with this role. In addition to lectures, the course includes discussion examples that show how USPAP applies to situations that personal property appraisers encounter in everyday practice.

In December 2017 Chad Riley completed the core course in appraisal studies earning his ISA distinction from the International Society of Appraisers and he is fully compliant with the 2018-19 Uniform Standards of Professional Appraisal Practice (USPAP.) Riley is now the only ISA appraiser in the Windsor-Essex Region and 1 of only 45 ISA members in all of Canada.

Riley is now a qualified appraiser and able to complete appraisal services for the purposes of income tax charitable donations with the Canada Revenue Agency, insurance policies and claims, equitable distribution and liquidation of assets, among other services.

This designation will assist the SEAA/LAC with duties related to the permanent collection and future acquisitions. It is an investment in the LAC staff and continued education and training while also adding a new service available to the community through the LAC.

International Society of Appraisers

The International Society of Appraisers (ISA) is the largest of the professional personal property appraisal associations representing the most highly trained and rigorously tested independent appraisers in the United States and Canada. We are a not-for-profit, member-driven association, formed to support our member needs and to enhance public trust by producing qualified and ethical appraisers who are recognized authorities in personal property appraising.

ISA was founded in 1979. Over the past 39 years, the society has grown to be the undisputed personal property association of choice. Our Core Course in Appraisal Studies is widely regarded as the most comprehensive in the industry, distinguishing ISA as the leader in methodology, theory, principles, practices, and ethics. We also offer extensive professional development in specific areas of product knowledge and connoisseurship, both through coursework and continuing education offerings at our annual conference.

ISA's membership is diverse and collegial. Our members include many of the country's most respected appraisers, consultants, curators, scholars, gallerists, estate liquidators, auctioneers, and dealers. We pride ourselves on a strong national network of appraisers who draw on highly specialized knowledge, skill, and experience, serving as a resource to our fellow members in a spirit which is unparalleled. Our four main divisions are: Antiques, Furnishings + Decorative Arts; Fine Art; Gemstones and Jewelry; and Machinery and Equipment.

Personal property appraising is an evolving profession and the ISA courses continue to advance, reflecting the most sophisticated knowledge and technology available. Additional courses are in the process of development, including a state-of-the-art, comprehensive online learning platform.

At ISA you can find the most skilled Personal Property Appraiser for your needs.

The hundreds of members of the International Society of Appraisers include a broad range of qualified professionals. Whether you're looking for an antique appraiser, jewelry appraiser, art appraiser, automobile appraiser, furniture appraiser, or anything else in the world you would like appraisal services for – we've almost certainly got someone to fill your needs.

Our qualified professional appraisers have expertise in all types of appraisals and appraisal-related services including estate tax appraisals, insurance damage claims, estate liquidations, estate probate, business valuations and more.

Not only do we have the most skilled Professional Personal Property Appraisers, but our members offer many other services as well... Their services don't stop there! Many are experienced in auction services and auctioneering, estate sales, expert witness testimony, and work as consultants in many areas including art and furniture conservation, restoration, and repair.

Please visit our

[Find an ISA Member page to see the many appraisal and appraisal-related services our appraisers offer.](#)

Education Programs

The LAC strives to help enrich our communities understanding and appreciation for the arts and culture while assisting to enhance skills and talents for both youth and adults.

Come join us and explore your artistic side. Develop your skills and have fun in our relaxed lower level studios. Our teachers offer a broad range of adult and children's classes suited to all levels and areas of interest from acrylic, oil, watercolour and encaustic painting, drawing, printmaking as well as specialized individual one on one classes and holiday and seasonal art camps for children.





Art Works With Katherine Burton

For ages 5-13 / Teen classes 13-19

Art Works has continued to bring quality Art Programs to our communities children since 2005, however I have been instructing art programs since 1995. I am reporting Art Works involvement with the Leamington Arts Centre for the year of 2017. There have been a variety of different programs consisting of March Break Camps and Summer Art Camps.

March Break Art Camp

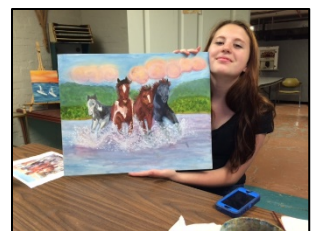
Students did a variety of different artwork such as oil painting, relief painting, shadow puppets, puppet theaters and watercolour painting.

Summer Art Camps

Students used a wide variety of materials such as charcoal, oil and watercolour paints to create innovative and exciting works of art.

Art Works continues to partner with the Leamington Arts Centre to bringing quality art programs for our community's children.

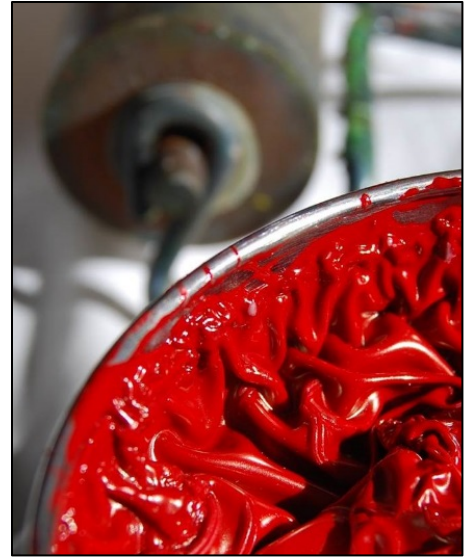
Katherine Burton
Owner/Instructor
Art Works



Printmaking Classes & Open Studio

with Marshall Heaton, MFA

Local artist Marshall Heaton is excited to bring printmaking to the LAC's new Printmaking Studio. Through a series of four classes these two workshops will allow artists to explore the art of relief printmaking (from its most basic stamping applications to specific focuses on woodblock and lino printing), and intaglio printmaking (from the etching to engraving process). Artists will hand-pull their own work and utilize an etching press, and learn about the art of multiples, editions, transfers, mono-printing and various post printing additive processes. Presentation of completed works; matting, framing, binding, photographing, exhibiting, and gifting will also be presented based on participant interest.



Introduction to Printmaking & Open Studio

Four classes will immerse the artist in the studio practice of intaglio printmaking through the introduction of both engraving and etching techniques. Digital image transfers / photo transfers will also be explored. Prints will be printed using an etching press.



Facility Rentals

The LAC is proud to provide a gathering place for the community's programming needs and special events. Our space is available to individuals, businesses, community groups and organizations for private social events such as baby showers, bridal showers, wedding ceremonies, book launches, meetings, educational and business events, and more.

The beautiful main floor galleries offer large spaces for entertaining and socializing with plenty of room for hors d'oeuvres and cocktail tables, buffets, receiving tables, or seated catered dining. It's the perfect unique setting for showers, weddings, anniversaries, book launches, CD releases and more. The galleries are available for facility rentals after 5pm any day of the week including weekends. **some exceptions may apply.*

The large 2nd floor community room is the perfect setting for educational programs, seminars, workshops, meetings and conferences. It comes equipped with a 100" projector screen, tables, and seating for up to 70. The community room is available all hours any day of the week including weekends.

The lower level studio space is a great space to get messy with paints, crafts and hands-on work. Studio space is available monthly for artists and arts instructors to hold classes and workshops. It is equipped with its own clean up station, tables, chairs and washroom. It is available all hours any day of the week including weekends.



Facility Rentals



Facility Rentals

In addition to exhibition space in our galleries, the LAC also offers office space, meeting room space as well as workshop and studio space, plus, it's fully accessible! In 2017 several local business made use of the LAC. Revenues from facility rentals aid in offsetting operating costs so more funds can be used for programing and events. The LAC truly is a building for the community.

Office Space Rentals



Statements of Revenues & Expenditures

Report to the Members

The accompanying financial statements of the South Essex Arts Association which comprise the statements of the financial position as of December 31, 2017 have been externally audited by Hicks, MacPherson, latona, Driedger Accountants (HMID).

Board of Director's and Treasurer's Responsibility for the Financial Statements

The SEAA Treasurer is responsible for the preparation and fair presentation of these financial statements as approved by the Board of Directors in accordance with Canadian accounting standards for not-for-profit organizations, as shown herein and prepared by HMID Accountants.

Opinion

In the Board's opinion, the financial statements present fairly, in all material respects, the financial position of the South Essex Arts Association as at December 31, 2017 and the results of its operations and its cash flows for the year ended December 31, 2017 and in accordance with Canadian accounting standards for not-for-profit organizations.

NOTICE TO READER

On the basis of information provided by management, we have compiled the balance sheet of South Essex Arts Association as at December 31, 2017, and the statement of revenue and expenses and net assets for the year then ended.

We have not performed an audit or a review engagement in respect of these financial statements and, accordingly, we express no assurance thereon.

Readers are cautioned that these statements may not be appropriate for their purposes.

**HICKS, MacPHERSON, IATONNA
& DRIEDGER LLP**

*Hicks, MacPherson, Iatonna
& Driedger LLP*

Chartered Professional Accountants
Licensed Public Accountants

Leamington, Ontario
April 2, 2018

South Essex Arts Association

Balance Sheet as at December 31 (Unaudited)

| | 2017 | 2016 |
|-------------------------|------------------|------------------|
| Assets | | |
| Current | | |
| Cash | \$ 18,717 | \$ 13,338 |
| Restricted Funds | 25,481 | 25,000 |
| | \$ 44,198 | \$ 38,338 |
| Net Assets | | |
| Net Assets - restricted | \$ 25,481 | \$ 25,000 |
| Net Assets - general | 18,717 | 13,338 |
| | \$ 44,198 | \$ 38,338 |

South Essex Arts Association
Statement of Revenue and Expenses and Net Assets
for the years ended December 31
(Unaudited)

| | 2017 | 2016 |
|--|-----------------|-----------------|
| Revenue | | |
| Exhibits - art | \$ 983 | \$ 430 |
| Arts at the Marina | 11,891 | 12,007 |
| Exhibits | 1,933 | 2,299 |
| Fundraisers and donations | 4,792 | 4,850 |
| Signature gifts | 6,068 | 4,981 |
| Memberships | 3,284 | 2,527 |
| Rental | 18,122 | 21,905 |
| Workshops | 602 | 1,045 |
| Grants | 58,850 | 44,969 |
| Interest | 515 | 2,662 |
| HST rebate | 3,294 | 1,881 |
| | 110,334 | 99,556 |
| Expenses | | |
| Exhibits - art | - | 241 |
| Arts at the Marina | 3,318 | 2,658 |
| Exhibits | 136 | 222 |
| Signature gifts | 5,091 | 5,548 |
| Office | 11,450 | 9,884 |
| Repairs and maintenance | 2,910 | 7,264 |
| Miscellaneous | 3,067 | 111 |
| Art purchase | 500 | 1,413 |
| Advertising | 1,554 | 688 |
| Utilities | 9,079 | 11,806 |
| Insurance | 2,468 | 2,302 |
| Wages | 60,836 | 49,165 |
| Bank charges | 1,127 | 884 |
| Security | 1,938 | - |
| Professional fees | 1,000 | 1,949 |
| | 104,474 | 94,135 |
| Excess Revenue Over Expenses for Year | \$ 5,860 | \$ 5,421 |

South Essex Arts Association

Statement of Net Assets for the years ended December 31

| | Net Assets General | Net Assets Restricted | 2017 Total Net Assets | 2016 Total Net Assets |
|-----------------------------------|-------------------------------|----------------------------------|--------------------------------------|--------------------------------------|
| Balance, Beginning of Year | \$ 13,338 | \$ 25,000 | \$ 38,338 | \$ 32,917 |
| Revenue Over Expenses | 5,379 | 481 | 5,860 | 5,421 |
| Balance, End of Year | \$ 18,717 | \$ 25,481 | \$ 44,198 | \$ 38,338 |



Your Interest and Support in the *South Essex Arts Association* helps build a richer and brighter community. Thank you!

Cover Images:

1. Going Deeper. 2017. Fluid Acrylic. Deborah Cameron
2. Untitled, Plein Air Study. Oil on Board. Chris Morton



The SEAA/ LAC recognizes the generous support of the Municipality of Leamington and the Southpoint Sun.