



Create
Sustain
Celebrate

ANNUAL REPORT 2020



COVID-19 Closure



COVID-19 VISITING + PROTOCOLS

In March of 2020, the Leamington Arts Centre was forced to close its doors to the public due to the COVID-19 pandemic.

While closed, the LAC underwent a series of facility upgrades and renovations, including the new Education Studio, now located on the second floor. In addition, Art supply sales were also able to continue through curb-side pick up until the doors to the building were once again opened to the public in July.

From July to December, with Covid-19 restrictions and protocols in place, the LAC was able to continue with programming and exhibitions like the WFCU Painting Competition, and A Signature Christmas: Indoor Arts & Crafts Market. However, a second Lockdown in late December resulted in the closure of the LAC for the remainder of 2020.

This report details the activities we are able to accomplish working around COVID-19 restrictions. ²



Table of Contents

Corks and Canvas Night, February 14, 2020

4	About the LAC	22	Education Programs
5	About the SEAA Mission Statement Values & Vision Statement	23	Facility Improvements
		24	The Market Place: artist market – café – wine bar
6	Message from the Chair	25	Art Supply Store
7	Message from the Director	26	Permanent Collection
9	Board of Directors Staff & Volunteers	27	2020 Acquisitions
10	Penny Belluz	28	Notable New Acquisitions
11	Volunteer Program	29	WECF Virtual Gallery Grant
12	Canada Summer Jobs	30	Accolades & Professional Services
13	Donors, Sponsors, Members & Supporters	31	International Society of Appraisers
15	Corporate Sponsors & Partners	32	Training and Development
16	Exhibitions	33	Visitor Statistics
17	2020 Exhibitions	34	Venue Rentals
19	Community Gallery + Meeting Space	36	Statement of Revenues & Expenditure
20	2020 Events & Programs	41	Contact & Credits
21	Arts @ The Marina		

ABOUT THE LAC

The Leamington Arts Centre (LAC) is a public, not-for-profit arts centre with a focus on exhibiting visual arts and developing arts and culture programming.

The LAC was established as the South Essex Arts Association in 1971 with the mandate to create, sustain and celebrate the arts. Over the years, the LAC has developed into a cultural pillar for uptown Leamington and a regional arts and culture destination. Supported by the Municipality of Leamington, donors and its members, the LAC is a 10,000 square foot facility comprising of four exhibition spaces, a market place artist market, café and wine bar, an art supply store, an education studio and meeting spaces.

The LAC is an award winning organization known for its wide range of activities, and emphasis on community and local programming alongside ancillary events. The LAC presents a changing calendar of up to 40 diverse exhibitions each year and is home to the notable Henry collection and the LAC permanent collection, collectively comprising of over 600 Canadian, international, historical, and contemporary works of art.

Distinguished for offering complimentary visitor admission and programming, the LAC is committed to facilitating access and stimulating the appreciation and understanding for visual arts and relevant cultural topics.

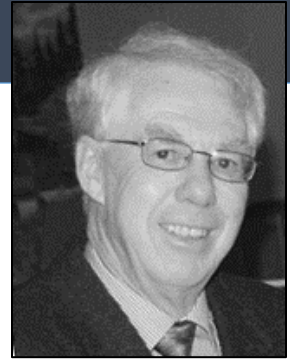
MISSION STATEMENT

The South Essex Arts Association is dedicated to creating and sustaining a celebration of the human spirit through the nurturing of the arts within our community.

VALUES & VISION STATEMENT

The South Essex Arts Association, in partnership with the various art mediums and other disciplines within the arts culture, promotes, fosters and stimulates the appreciation of the arts. Through artistic events and exhibitions with a special focus on the work of local artisans, SEAA assists in preserving all forms of art within the community.

Message from the Chair



Considering what the year was, the Leamington Art Centre should really appreciate things turned out as well as they did.

Of course that doesn't help when one realizes it began as one of the most promising.

January and February of 2020 began with record attendance numbers (2,000), and excellent financial possibilities in shows, sponsorships and other income sources. And then came Covid and on March 16th the gallery closed its doors. All shows and rental activities ended and the only activity in the following months was the curb-side sale of art supplies. Even the LAC's hallmark event, **Arts at the Marina** had to be cancelled.

In the fall, there was a limited re-opening under strict attendance rules and then came another Covid lock-down to end the year.

Thankfully, the town of Leamington approved the grant request from the LAC, bringing that total to the \$60,000 mark.

That, along with other government programs (to lessen the Covid impact) supported the art gallery through the year.

However, some things *did* happen in 2020.

The municipality undertook a study of the LAC building with the view of future updates and repairs. And again the municipality, working with our director Chad Riley, began developing a "business plan".

There was also one benefit to the gallery being closed for such a length – it provided Chad the hours to complete many updates in the second floor offices and meeting places.

Thanks to Chad and staff member Sharon Suitor, for their efforts in a difficult year.

And I also thank the other LAC board members for their interest and input in the gallery activities.

Mike Thibodeau

Chair, South Essex Arts Association

Message from the Director/Curator



"Great things are done by a series of small things brought together."
Vincent van Gogh

As many of you know well, the Leamington Arts Centre (LAC)/South Essex Arts Association (SEAA) is a charitable not for profit organization reliant on community support (like yours!). With your support through membership and participation, through 2020 the LAC was able to continue its mission to create, sustain and celebrate the arts.

Typically, in this letter I would highlight and provide stats to report on how your contributions made an impact. I would provide details on the number of exhibits the LAC held and emphasize the larger ones with hundreds of entries and visitors such as the Juried Student Art Show, and the Amateur Photography Contest; I would mention the various special events such as Arts @ the Marina, Corks & Canvas, Mill St. Markets in partnership with the Municipality of Leamington; and I would mention the fundraisers like A1 Chinese Restaurant, CRAVE Family Grill and Pub, and all the education programs, march break and summer camps for children along with other community and private events; showers, weddings, etc. However, as we all know too well, COVID-19 has dramatically affected public programs and galleries, alike how it has affected nearly all businesses and our personal lives.

What I can report on is that the LAC survived 2020 and that is 100% due to community support. Vital government programs funded by taxpayers that established benefits such as wages subsidies, no interest loans, and source deductions concessions all helped to offset fixed operational costs such as hydro, gas, and insurance. Our local Municipal government, administration and members of council have all been understanding and supportive, not only with funding, but also with services and other aids.

Along with these, community grants we received from the Windsor-Essex Community Foundation to begin work on virtual programming (coming in 2021) and other small grants to offset direct COVID-19 expenses for PPE, Plexiglass, sanitizer stations, etc. have all made an impact.

Still, it is our members and artists who keep the LAC thriving by visiting, entering exhibits and participating in the programming; and the one stat that stands out is that memberships and donations increased though 2020 and continued to increase as COVID-19 persisted. Our valued community members mailed in donations and memberships; went online to send e-transfers and called us, or emailed us to check-in.

Our 2020 Annual Appeal campaign was also very well supported by the community. And artists were definitely working hard at home as support in sales from our Art Supply store were also up and curbside sales continued even during lockdown.

So, while we can put an asterisk on the programming stats for 2020, the stats for public support shined bright and without a doubt made *all* difference this past year. It is by way of the generous support from donors, members, sponsors, volunteers and visitors that the LAC continues to exist and persevere challenging times.

2021 will mark the SEAA/LAC's 50th year; as we look to the future of the gallery in the wake of COVID-19, our board and staff continue to forge the organization ahead into a new era, with new adaptive programming and new partnerships that we will enhance our physical programming while adding new streams of revenue to ensure our place in the community.

It is with great thanks to all friends of the LAC that I am pleased to present the 2020 Annual Report.

A handwritten signature in black ink, appearing to read 'CRiley', with a stylized, sweeping flourish extending from the bottom right.

Chad Riley, MFA, ISA
Director/Curator



Board of Directors, Staff & Volunteers

WFCU Painting Competition + Exhibit, 2020.

CHAIR

Mike Thibodeau

VICE CHAIR

Sheila McBrayne

TREASURER

Katherine Albuquerque

SECRETARY

Jan Bateman

EX-OFFICIO

Tim Wilkinson

Derek Friesen

Maria Jose

Mike Mastronardi

Jill Nicholson

Mary Jane Nohra

Shelly Quick

Arlene Sinasac

DIRECTOR/CURATOR

Chad Riley

VISITOR SERVICES & PROGRAMS COORDINATOR

Sharon Sutor

VISITOR SERVICES + GALLERY ATTENDANT

Delaney McVeigh (June 25 – Aug 23)

ADMINISTRATIVE ASSISTANT

Clarissa Fehr (July 9 – August 9)



U20 Members Show + Exhibit, 2020

Honourary Lifetime Membership: Penny Belluz

Penny Belluz served on the SEAA Board of Directors for over 12-years first as Vice Chair, then later taking over as Treasurer following Ralph Butler. Penny played a lead role with the organization and became a valued and trusted friend to many. Penny was extremely dedicated and passionate about the LAC. She worked very closely with Director/Curator Chad Riley during this time to steer the financials of the organization. Penny resigned from the board in 2020 and was awarded an honorary membership for her years of volunteer service guiding the LAC. Penny remains active as a patron and supporter of the LAC.



"I was pleased when I was asked to be on the LAC Board. I have always enjoyed art and during my time on the Board I learned so much more about art and the running of a successful gallery. Also during my time I was proud to be a small part of the process that elevated the Gallery to what it is today; one of the "Jewels" in Downtown Leamington. My artistic skills are weak so my contribution was in the financial aspect which I enjoyed doing. I made friends and am happy that I was able to get to know Chad who will always be Mr. LAC to me!"

- Penny Belluz



The LAC is a member of Volunteer Canada and has adopted their code and we are committed to demonstrating our value in volunteerism.

Who can volunteer? Everyone! Volunteers at the LAC are as diverse as the art we display and there are many unique opportunities to fit your interests and time. Knowledge of art is not necessary, just an appreciation for art and the enthusiasm to share it with others.

Docent + Administrative Assistant

The Docent + Administrative Assistant will welcome and engage patrons and help them connect with the art and have a memorable visit; inform patrons of current exhibits, upcoming events, classes and LAC activities of interest; conduct tours of the gallery for groups and schools, and utilize techniques of dialogue and inquiry. The docent encourages patrons to participate, ask questions and become informed and enthused about the LAC, its exhibits and activities. As Administrative Assistants, will help with administrative and office duties, fundraising and marketing campaigns, mailings, data entry and record keeping; other clerical work such as answering the phone and directing class and inquiries, taking messages and other basic office related tasks.

Facilities & Events Assistant

The Facility + Events Assistant will assist with preparation, coordinating and set up of programs and activities at the LAC, such as exhibit installation and de-installation, artist receptions, LAC private rental events and LAC art classes; assist with facility maintenance.

A special thank you to our regular weekly volunteers for their ongoing dedication and support. These valued volunteers include: Sally LePla and Chao Zhao.

Anna Lamarche
Chao Zhao
Charlotte Murray
Danny Bateman
Dennis Riley
Derek Friesen
Diane Riley
Eric Naylor
Ella Riley
Gerri Thibodeau
Jessie Riley
Kathryn Parent
Kristina Bradt
Kyra Cole
Noah Riley
Sally LePla
Sophie Hinch
Speedprint



Canada Summer Jobs

U20 Members Show + Exhibit, 2020

Each year for the past several years the LAC has been successful at obtaining funding through the **Canada Summer Jobs** Program for employees under the age of 30. Job placements typically range 6-12 weeks, in 2019 the LAC was successful in receiving funding for one additional staff for 10 weeks. This extra staff allowed the gallery visitor hours to increase by 8 additional hours per week with the gallery being open on Sundays for the months of July and August during peak tourism season.

Visitor Services & Gallery Attendant (VSGA): Delaney McVeigh (June 25 – August 23)

The Visitor Services & Gallery Attendant (VSGA) is entrusted with effective customer service and cheerful reception at the gallery as well as facility appearances and cleanliness. The VSGA accurately performs, point of sales, clerical duties and as a docent disseminates information in person and online to promote exhibitions, events, programs and services offered at the LAC. The VSGA is a professional, warm, friendly and informative personality that enhances the visitor and patron experiences.

Administrative Assistant (AA): Clarissa Fehr (July 89– August 9)

The Administrative Assistant assists with the development and delivery of public programs such as exhibitions, events and education as well as fund development and public support programs such as membership, donations, fundraisers, grants and venue rentals. The Administrative Assistant is entrusted to provide a superior visitor service experience at the gallery as well as assist to maintain facility appearances and cleanliness. Is a warm and friendly personality who also maintains a high level of professionalism and aptitude to aid in the success and growth of the gallery.



Government
of Canada

Gouvernement
du Canada

Canada



8x10 Amateur Photo Contest, 2020

Donors, Sponsors, Members & Supporters

The South Essex Arts Association/ Leamington Arts Centre seeks donations from individuals as members and donors to support vital programming such as exhibitions, events and education programs. The South Essex Arts Association wishes to acknowledge and recognize the generosity of new and renewing members whose gifts were received in 2020.

LIFETIME MEMBERS

Dr. and Mrs. Kelley
George Alles
Harold Burton
Harry Enns
Ken Friesen
Pat O'Heron
Penny Belluz
Phyllis Nelson
Walter McGregor

CHAMPION OF THE ARTS (500+)

Allan and Marilyn Scase

PATRON OF THE ARTS (250+)

Mary Anne Kazuke

FRIEND OF THE ARTS (100+)

Laurie Langford
Tim Wilksinson

NOT FOR PROFIT (\$50)

Leamington District Chamber of
Commerce

STUDENT (\$20)

Maria Jose
Grace Enns
Reagan Chapman

FAMILY (\$40)

Jan Bateman
John & Patricia Haynes
Vicki McKay
Kathryn & Dave Parent, Paddock
Lisa & Marcel Simard
Carmen Smith
Jeff & Susanna Suchak
Joe and Christiana Tagliapietra
Layne & Elaine Van Loo
Marlene Woodrow

INDIVIDUAL (\$30)

Margaret Adams
Katherine Albuquerque
Lori Gouin
Clara Howitt
Jim Hunt
Linda Hurst
Laura Kaake
Lorraine Maurice
Sheila McBrayne
Jim McTavish
Jill Nicholson
Ann Roberston-Seigel
Lynda Ruddock-Rousseau
Arlene Sinasac
Donna Walton

HONORARY

Michele Boyle
Pavlo Lopata
Marg Ross

Donors, Sponsors, Members & Supporters

ARTISTS (\$25)

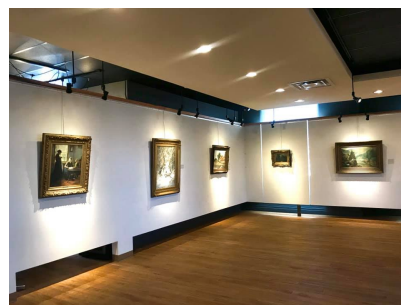
Noor Abbas
Jaclyn Abt
Anastasia Adams
Robert Affleck
Barbara Alkemade
Jack Bennett
Lou Ann Bigley
Michele Boyle
Nancy Cassels
Terry Churchill
Ellen Marie Cooper
Rick Coote
Rochelle Craig
Rae Dekatch
Trudy Dempsey
Paul C. Deschamps
Dorilee Dickens
Ann Ducharme
Jane Dugan
Catherine Anne Fox
Ken Friesen
Miklos Galata

Gianni Giotol
Dorit Girash
Vera Graham
Christine Gryski
Sandie Gunning
Carolyn Hardy
Leanne Hayes
Beverly Hill
Marilyn Hoyer
Andrea Jenkins
Garry Johnson
Mary Johnston
Terra Koop
Aline LaFleche
Laurie Langford
Helen Lavin
Sally LePla
Nancy Longeway
Petro Lopata
Toni MacDonald Wells
Carolane Madla
Deb Marentette
Darlene Martens
Rosy McGregor
Michael Mastronardi
Joan McNeill
Andrea Mercier
April Mills
Arlene Murphy
Charlotte Murray
Lawren Nause
Mary Jane Nohra

Mike Ondrovic
Debbie Packer
Barbara Pastorius
Sherrie Piens
Gisele Poisson
Carolynn Queale
Shelly J. Quick
Valerie Read
Joan Rieveley
Tim Roelens
Lynda Ruddock-Rousseau
Sarah Rupert
Jeff Snauwaert
Todd and Sherry Stahl
Del Stewart
Irina Teske
Mike Thibodeau
Astrid Tobin
Irena Vucajnk
Donald Waffle
Susan Weekes
Nancy Whittle
Chao Zhao



The Marketplace: artist market – café- wine bar



The Henry Collection, Municipality of Leamington, 2020

Corporate Sponsors/Partners

The South Essex Arts Association/ Leamington Arts Centre seeks sponsorships from corporations and other organization in partnership to support vital programing such as exhibitions, events and education programs. The South Essex Arts Association wishes to acknowledge and recognize the generosity of new and renewing sponsors whose gifts were received in 2020.

A1 Chinese Restaurant Leamington
Albuquerque Accounting
Aleksander Estate Winery
Arts Council Windsor & Region
Art Gallery of Windsor
ArtBuild Ontario
Artcite Inc.
Blackburn Radio
The Bloomin' Gardener
Bradt's Butcher Block
Brandsource Gabriele
Caesars Windsor
Country FM 95.9
Cardinal Carter
City of Windsor
Cowlick Studios
Crave Family Gill & Pub
Del Fresco Pure
École Secondaire Catholique L'Essor
Essex District High School
Essex Free Press
Friends of Point Pelee

Grove Brewhouse
Heinz Jordan
Highbury Canco
Ives Insurance
Hogs for Hospice
International Society of Appraisers
Kingsville District High School
Kiwanis Club of Leamington
Lakeside Bakery
Erie Shores Hospital
Leamington District Chamber of Commerce
Leamington District Secondary School
Leamington Half Century Club
Leamington Lions Club
Libro Credit Union
Lore Computers
MC Business Solutions
Ontario Arts Council
Ontario Association of Art Galleries
Passa Associates Architects
Photography & Framing by Anna

Rotary Club of Leamington
Reid Funeral Home Limited
Sandwich Secondary School
Security One
Shooters Photography Club
South Essex Community Council
Southpoint Publishing
Speedprint Ltd.
TechSoup Canada
Tecumseh Shoreline
Tecumseh Vista Academy
The Bank Theatre
The Branding Loft
The Mix 96.7FM
The Municipality of Leamington
The Lesson Lounge
Tourism Windsor Essex & Pelee Island
University of Windsor
Uptown Leamington BIA
Vanguard Youth Arts Collective
Westview Freedom Academy
Wilkinsigns
Windsor Endowment for the Arts
Windsor Family Credit Union





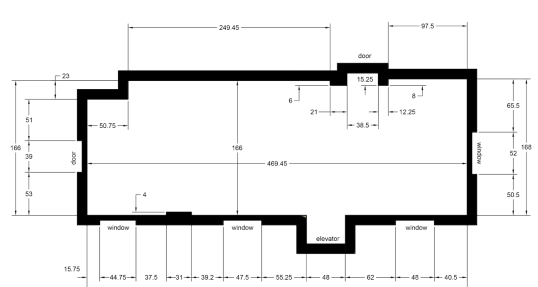
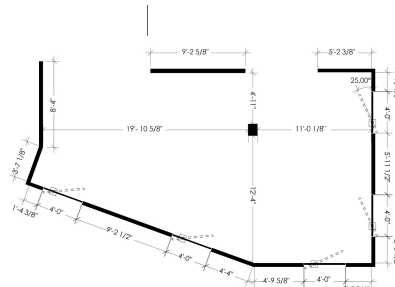
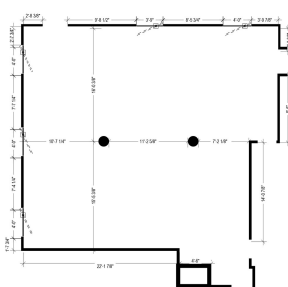
The Wunder Show, Jay Raven, 2020

Exhibitions

The LAC is a state of the art gallery which offers three exhibition spaces with over 300 linear feet of continuous wall space and 3000sq/ft of floor space a gift shop, art classes, workshops and meeting spaces. The LAC is one of the area's paramount places to view modern art with an emphasis on local and aspiring artists and artisans.

The LAC takes great pride in the exhibits we feature and the artists we select to showcase. Each season from January through December, the LAC offers up to 40 different exhibits. Exhibitions typically change each month so there is always something new to see from solo artist exhibits, private and gallery collections, themed group exhibits, community clubs, school exhibits and more.

Admission to the LAC is always free, donations are always appreciated. And be sure to join us each month for the new exhibit opening receptions where you can meet the artists, view their works, meet new people, network and collaborate with other creative minds, and share in the enjoyment of the arts. Food and a variety of cocktails are also served from the Market Place bar and café.





** Due to COVID-19 and in the interest of public safety, many exhibitions and receptions were cancelled.*

**WFCU CREDIT UNION: painting competition + exhibit. 2020*

2020 Exhibitions

January 2 – February 2

8x10: 2020 AMATEUR PHOTO CONTEST

This annual exhibit features striking photographs in 3 categories: Nature & Wildlife, Hometown & Travel, and Everything Else. Sponsored by: Speedprint Ltd. & Framing by Anna

February 5 – March 8

U20: 2020 LAC Members Show + Sale

The annual members show and sale celebrates the strength, vitality, creativity and wealth of talent found within the Leamington Arts Centre (LAC/ South Essex Arts Association (SEAA).

DIRECT DELIVERY: Barbara Alkemade

Barbara's artworks are a celebration of the magic of soft pastels. Straight from the artist to the paper, no tool can be more direct. And the irony of capturing the purest of colour pigments in a fragile soft stick is just part of the fun (or frustration) for the artist. The immediacy of each mark, gesture and blue is a delight, a joyous embrace.

RECENT ACQUISITIONS: LAC Permanent Collection

The SEAA/LAC's collection is of great pride amongst its staff, members, and constituents. We take seriously our mission to enrich culture through the collection and preservation of art.

March 16 – July 7

LAC CLOSED DUE TO COVID-19

July 8 – July 26

THE HENRY COLLECTION: Municipality of Leamington

The Henry Family traveled the world collecting art and artifacts from all around the world as far away as East Asia. The collection includes oil paintings from across Canada and the United States, porcelain figurines from China, jade and silver sculptures and reliefs, plus much more.

BID OR BUY NOW: from the LAC Collection

Bid or Buy Now is your chance to bring a piece of artwork from the LAC collection to your home. The works include, but are not limited to, original acrylic, oil and watercolour paintings as well as limited edition lithograph and giclee prints.

July 29 – August 30

SHIFT: 6th Annual Flock Fest (Virtual Exhibit)

The Leamington Flock Fest is an annual arts event which brings the community together to embrace the arts. The Flock Fest is an exhibition of work representing the journey of creative exploration, connecting and soaring past our personal limits.

SIX: Gisele Poisson, Claire Hayes, Jaclyn Abt, Marriette Comartin, Gina Foy, Chantelle Poisson

Six Sisters "a collective." We are six sisters. We have each come to art in a different and profound way in our lives. Our work is very different from each other and yet our practices share a commonality as sisters.

BID OR BUY NOW: from the LAC Collection

Bid or Buy Now is your chance to bring a piece of artwork from the LAC collection to your home. The works include, but are not limited to, original acrylic, oil and watercolour paintings as well as limited edition lithograph and giclee prints.

September 2 – September 27

WFCU CREDIT UNION: painting competition + exhibit

The WFCU Credit Union Painting Competition + Exhibit is an incredible opportunity for emerging, mid-career and established artists to present their most accomplished works at the LAC for a chance to win cash prizes.



**SIX: Six Sisters, A Collective, 2020*



FAR OUT SHOW: Group Exhibit. 2020

2020 Exhibitions

September 30 – October 25

FAR OUT SHOW: group show

This exhibition's focus is to highlight and showcase those offbeat, avant-guard, radical and/or extreme works of art that make us all think outside the box and push the limits of expressionism in contemporary art.

October 28 – November 22

THE WUNDER SHOW: Jay Raven

The Wunder Show is a contemporary art gallery experience showcasing the captivating and adventurous paintings of visual artist, Jay Raven. It is a visceral carnival of imagination where visions of an enchanted alternative world are cultivated under a surreal atmosphere of curiosity and invention. Works presented aim to mystify and inspire by illustrating the wild spirit of creativity and the fascinating innovations of shamanic amalgamation.

MEMBER SHOW & SALE: Shooter's Photography Club

Have passion for photography? Interested in being involved and gaining some knowledge and experience? See what the Shooters Club members have been up to.

November 25 – December 23

A SIGNATURE CHRISTMAS: Indoor Artist Market

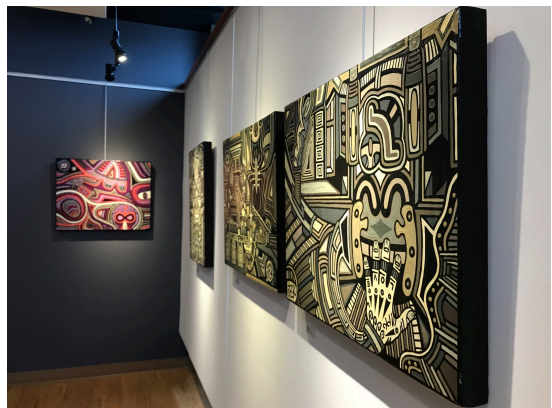
LAC presents its annual indoor Christmas Arts & Crafts show. Featuring artists and artisans in a variety of mediums, and a variety of gifts for everyone on your list.



A SIGNATURE CHRISTMAS: Indoor Artist Market, 2020



Shooter's Photography Club, group exhibit. 2020



THE WUNDER SHOW: Jay Raven, 2020



Community Gallery & Meeting Space

What a Wonderful World, Toni Wells, 2020

As a meeting space, the LAC is proud to provide a gathering place for special events and programs. This space is available to individuals, businesses, community groups and organizations for private social events, educational and business events.

The large community room is the perfect setting for educational programs, seminars, workshops, meetings and conferences. It comes equipped with a 100" projector screen, tables, and seating for up to 50. The community room is available all hours any day of the week including weekends.

The Community Gallery & Meeting Space, located on the 2nd floor, doubles as a meeting and exhibition space. In 2019, the meeting space was a very active space, being rented on average 4 to 5 evenings per week and other daytime hours by community groups and businesses such as the uptown Leamington BIA, Windsor Factory Supply, Caldwell First Nation, RBC Bank, Libro Credit Union and others. 2020 was another successful year as Irina Teske, Tim Roelens, and Toni Wells exhibited their work.

January 2 – July 7

CHIPBOARD PAINTINGS: Irina Teske

An exploration in the relationship between image and material. The chipboard's rough, unfinished surface works against out preconceived notions of the softness and beauty found in nature's ideal and the material's own pattern is manipulated to reflect and correspond to the patterns found in the natural world.

July 8 – September 27

FEEL: Tim Roelens

A collection of abstract in mixed medium. The type of medium, amount of texture, size of canvas and colours are all determined by the artist's feelings in that moment.

September 30 – December 23

WHAT A WONDERFUL WORLD: Toni Wells

A compilation of paintings, watercolours, and drawings of the natural world with warm and bright layers of colours, textures, and patterns.



A Signature Christmas, November-December 2020

** Due to COVID-19 and in the interest of public safety, group gatherings and receptions were placed on hold.*

2020 Events & Programs

January

WELLNESS THROUGH ARTS PROGRAM

Ongoing Through 2020

The Leamington Arts Centre / South Essex Arts Association are proud to announce in partnership with the Leamington District Memorial Hospital the Wellness Through Arts Program. The program's aim is to integrate the creative arts into the healing spaces within the hospital by reducing stress and promoting calming environments.

OPENING RECEPTIONS & AWARDS CEREMONY: JANUARY EXHIBITS

Fri, Jan 17, 7-9pm

MESH: Artist Network Meetings

Creative people, coming together.

Sat Jan 19, 12-1:30pm

Discussion led by: Anna Lamarche from Framing by Anna

Topic: Tips and Tricks for preparing, framing, and adding value to your work.

The Leamington Arts Centre presents free Artist Networking Meetings aimed at supporting the personal and professional development of artists in the Windsor-Essex and Pelee Island Region.



MESH
ARTIST NETWORK MEETINGS
CREATIVE PEOPLE COMING TOGETHER



February

CORKS & CANVAS: Wine & Paint Night

Fri Feb 14, 6:30pm

Enjoy a paint night at the LAC! Corks and Canvas is an evening to "drink creatively" with your friends or significant other. Generously Sponsored by the Leamington BIA, Aleksander Estate Winery.

OPENING RECEPTIONS: FEBRUARY EXHIBITS

Fri, Feb 7, 7-9pm

ANNUAL GENERAL MEETING

Wed, Mar 11, 6:30pm

Come to our AGM and learn about all the LAC accomplished in 2019 and get a peak at our plans for 2020 and beyond! Also enjoy networking and gathering with other supporters and arts enthusiasts..

March

OPENING RECEPTIONS & AWARDS CEREMONY: MARCH-JANUARY EXHIBITS

Cancelled due to Covid-19

December

A SIGNATURE CHRISTMAS:

Indoor artists market

Nov 25 - Dec 23

LAC presents its annual indoor Christmas Arts & Crafts show. Exhibit and sell your work directly inside our beautiful galleries during this month long "gift shop" style exhibition with a warm Christmas setting.



Arts @ The Marina, June 29 & 30 2019

Arts @ the Marina

It was with disappointment that due to COVID-19 the Leamington Arts Centre had to make the challenging decision to cancel the 28th annual Arts @ the Marina.

For nearly three decades the LAC has presented its major fundraiser of the year and over the years the event has featured thousands of artisans and welcomed even more visitors to Leamington's popular arts event at the scenic municipal marina.

The 2-day event scheduled for June 27 and 28 was well on its way to being a bigger and better show than ever. The LAC was excited to once again present so many talented artists and artisans as well as feature local musicians, delicious foods along with local wineries, breweries and spirit vendors from across Essex-County.

This was the first time in its long history that the event had to be cancelled. It had faired through inclement weather, troublesome fish flies, tough economic times and a few event changes, however in consideration for public health and safety, uncertainty, and all the time and planning that goes into Arts @ the Marina, the LAC had to cancel this community event for the first time.

We knew it would be a disappointment to the community and our exhibitors, but it was the best decision at the time and one that the Arts @ the Marina planning committee did not make easily.

We sincerely thank all our exhibitors who registered to be a part of the show, our generous sponsors, dedicated volunteers, service and equipment providers and to all the community who planned to, and who come out each year to support this great show.

As always, the LAC features many other unique arts and culture events and opportunities throughout the year, from on-going art exhibits in the gallery, the Market Place consignment shop, the art supply store, wine and paint nights, education programs, indoor artists markets, and much, much more. We hope to continue the tradition of this annual event in the future once it is safe to do so.

Thank you to everyone for their support and understanding, we wish you all the best and wellness during these times.



Education Programs

Education Studio at the Leamington Arts Centre

The LAC strives to help enrich our community's understanding and appreciation for the arts and culture while assisting to enhance skills and talents for both youth and adults. Come join us and explore your artistic side. Develop your skills and have fun in our relaxed lower-level studios. Our teachers offer a broad range of adult and children's classes suited to all levels and areas of interest from acrylic, oil, watercolour and encaustic painting, drawing, printmaking as well as specialized individual one on one classes and holiday and seasonal art camps for children.

Ongoing in 2020

Open Studio

Artists of all levels work on their own projects in a supportive and creative learning environment.

January

MESH: Artist Network Meetings

Sat Jan 19, 12-1:30pm

Discussion led by Anna Lamarche from Framing by Anna. Tips and Tricks for preparing, framing, and adding value to your work. The Leamington Arts Centre presents free Artist Networking Meetings aimed at supporting the personal and professional development of artists in the Windsor-Essex and Pelee Island Region.

Education Studio Renovations

In 2020, during the first of two Covid-19 shutdowns, renovations were completed on our new Education Studio, now located on the second floor of the LAC.



Facility Improvements

BIA UpLIFT Grant

The BIA UpLIFT Beautification Grant helps BIA members beautify and improve their building facades.

BIA Members are eligible to apply for the grant once a year and projects are eligible to receive 50% off of the cost of the improvement up to a max of \$500. In 2020, the LAC successfully received the grant and in partnership with Wilkinsigns and The Branding Loft, added the etched glass vinyl to 4 windows.



Vinyl Decals interior view.



Vinyl Decals on exterior of the LAC.

Office Renovations

In 2020, with the COVID-19 shutdown the opportunity was taken to relocate tenant offices, the collections room as well as the renovate the Director/Curators office.

The new office for the Director/Curator is now directly at the top of the stairs adjacent to the community gallery making for a much more accessible space while keeping the tenant's office now all in a separate wing of the second floor. The collections room is now also nearly double the size occupying 2 rooms with the LAC collection and the Municipality of Leamington's Henry Collection separated. A total of 3 office still remain for rent as before thus making the change very positive and productive.



2020 Market Place: artist market - café - wine bar

The Marketplace is a reinvented gift shop, café and wine bar space featuring artwork exclusively by its members. This unique and one-of-kind space focuses to highlight the originality, quality, craftsmanship and creativity found only in works bearing an artist's signature.

The Market Place café and wine bar also highlights our local wineries, breweries and distilleries. A selection of coffee, tea, soda, water, local wines, craft beers and sprits are served daily and during special events.

The Market Place is the perfect place to stop in, sit, relax or meet, drink and shop for creative and signature gifts. For special occasions and for yourself, no gift is better than handmade and local. To yourself or to someone special, give the gift of art.

Market Place Exhibitors

Alex Klassen
Anna Lemarche
Astrid Tobin
Biblioasis
Brandy Martin
Brian Sweet
Carolyn Hardy
Chad Riley
Charly Badaoui
Chao Zhao
Chris Basden
Joe & Christina Tagliapietra
Claudette Schiller
Coleen Thibert
Cris Kohl
Darlene Martens
Dave Atkinson
Dave Paddick

Deborah Cameron
Debbie Packer
Dorit Girash
Eric Naylor
Friends of Point Pelee
Gerry Hucko
Harold Burton
Helen Lavin
Irina Teske
Irena Vucajnk
Janal Koenig
Jim McTavish
Jim Oglivie
Jim Stein
Joel Westlake
Justin Latam
Karen Ross
Karen Scott
Kathryn Parent

Ken Friesen
Kristyn Dunnion
Kathy Klym
Laurie Langford
Layne & Elaine Van Loo
Louise Vermeiren
Linda Bertrand
Lynda Ruddock Rousseau
Maeve Omstead Johnston
Marg Ross
Mary Kendrick
Mary Newland
Michelle DeLacey Bruner
Michelle Dobrin
Nancy Cassels
Nelcy Martinez
Patti Wheeler
Pauline Ledoux
Pelee Music

Peter Olsen
Petroglyph Soaps
Renee Helling-Laur
Rick Coote
Ron Vermeiren
Rosalind Knight
Ryan Horvath
Sandi Collins
Sandie Gunning
Sarah Rupert
Sherrie Piens
Susan Dupont Baptista
Terra Koop
Terry Dolle
Todd & Sherry Stahl
Todd MacVicar
Tom Omstead
Vesna Bailey
Vicki McKay





Art Supply Store



Since 2016 the LAC has been carrying a variety of art supplies to support local artists! Name brands such as Golden, Amsterdam, Lukas, PrismaColor, Canson, Micron, Finetec, PrismaColor, Koi, and more. We carry everything from acrylic paints, oil paints, canvases, palettes, palette knives, watercolour paints, watercolour pencils, watercolour paper, frames, gesso, coloured pencils, graphite pencils, pen & ink, fixatives, clay, sketch pads & paper and printmaking supplies! Plus, we take special orders for artists and members.

The LAC strives to offer quality products at competitive prices. To support local artists and encourage creativity, LAC Members Get 10% OFF ALL Art Supplies.



**ART SUPPLY STORE
HOURS**
Thurs + Fri 10-430
Sat + Sun 12-4

2020 ART SUPPLY SALES

The Leamington Arts Centre held two Art Supply Sales in 2020.

July 2020

For the month of July we held a *Summer Inventory Sale* on our art supplies! We offered 20% off of all red tagged items and an additional 10% off to our members.

December 2020

Art supplies make great Holiday gifts! We offered 10% off with no tax on all in stock supplies and an additional 10% off to our members for a total of up to 33% off in savings.



Permanent Collections

The Henry Collection, the Municipality of Leamington, 2020

The Henry Collection: Historic Art & Artifacts

The Henry Collection, donated by the Henry Family, is a permanent collection of the Municipality of Leamington and is under the care of the Leamington Arts Centre. The Collection features various art and artifacts collected from all over the globe including works from far East Asia and North America.

LAC Collection: Local and Culturally Significant Artwork

The SEAA/LAC's collection is of great pride amongst its staff, members, and constituents. We take seriously our mission to enrich culture through the collection and preservation of art. Since its founding in 1971, the SEAA/LAC has acquired hundreds of works of art, collecting in the areas of Canadian and international historical and contemporary art.

The collection has been built both through donated gifts and considered purchases. Approximately 90% of gallery acquisitions come from private donors—often dedicated collectors looking for a permanent home for their works where they will be appreciated, cared for, and put on display for others to enjoy. Artists also donate their work, such as Jeet Aulakh's *Namo Ek Yoge*; 2010 oil on canvas. It is because of the generosity of these donors that the SEAA/LAC enjoys the position it holds as a collecting institution.



Harold Town
Side Light, 1956
Single Autographic Print

New Acquisitions: LAC Permanent Collection

George Graydon Dyck was born in Leamington on September 15, 1946 and died in Winnipeg, Manitoba on December 19, 2011. Graydon was an artist whose work was shown in Toronto, New York, Los Angeles and Winnipeg. He is best known for painting vintage cars and movie stars. Graydon's artistic skills were evident from a very young age and in 1967, he moved to Winnipeg to attend the School of Fine Art at the University of Manitoba. It was there that he met the love of his life Judith (nee Wolinsky). They explored many art scenes over the years, living in Toronto, New York, Los Angeles and Winnipeg.

Over his 45 year career, he did thousands of paintings and created hundreds of car and figure movement sculptures. His paintings are in many private and public collections across Canada and the U.S. In 1984, he was commissioned to paint a mural of nudes and figure movements in the women's powder room of the famous Limelight Nightclub in New York. He was known for being a painter of Cars and Stars and had many a muse, namely 1940s American cars and a fine group of ladies, including Diana Ross, Marlene Dietrich, Marilyn Monroe, Tallulah Bankhead, Bette Davis, Greta Garbo and Joan Crawford. He also painted many others, including Martin Luther King, Jr., Winston Churchill and Golda Meir. Graydon loved music, especially Motown and saw many of the greats perform in Detroit and Chicago in his teenage years.

Packard 30's

Graydon Dyck
Acrylic with Wax Pencil on Paper
Gift of Bob Ceh, Wasaga Beach, ON

White Slippen

Graydon Dyck
Acrylic with Wax Pencil on Paper
Gift of Bob Ceh, Wasaga Beach, ON

Diana Ross

Graydon Dyck
Acrylic with Wax Pencil on Paper
Gift of Bob Ceh, Wasaga Beach, ON

Packard 30's

Graydon Dyck
Acrylic with Wax Pencil on Paper
Gift of Bob Ceh, Wasaga Beach, ON

White Slippen

Graydon Dyck
Acrylic with Wax Pencil on Paper
Gift of Bob Ceh, Wasaga Beach, ON

Marilyn Monroe

Graydon Dyck
Acrylic with Wax Pencil on Paper
Gift of Bob Ceh, Wasaga Beach, ON

White Slippen

Graydon Dyck
Acrylic with Wax Pencil on Paper
Gift of Bob Ceh, Wasaga Beach, ON

Diana Ross

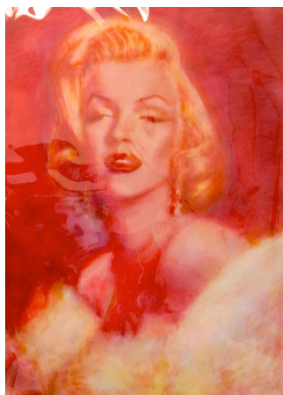
Graydon Dyck
Acrylic with Wax Pencil on Paper
Gift of Bob Ceh, Wasaga Beach, ON

Marilyn Monroe

Graydon Dyck
Acrylic with Wax Pencil on Paper
Gift of Bob Ceh, Wasaga Beach, ON



Diana Ross, Graydon Dyck
Gift of Bob Ceh, Wasaga Beach, ON

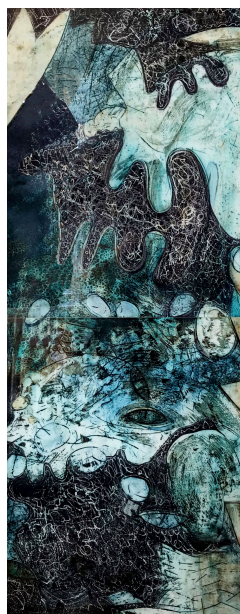


Marilyn Monroe, Graydon Dyck
Gift of Bob Ceh, Wasaga Beach, ON

Notable New Acquisitions: LAC Permanent Collection



1994 I
Adele Duck
Intaglio/diptych



1994 II
Adele Duck
Intaglio/diptych

Adèle Duck's practice is informed by her mastery of diverse media and processes including printmaking, drawing and painting, as well as the conventions of both abstract and figurative art. Each work is a fascinating combination: of marks both painterly and direct; flowing washes and glazes layered over defined shapes; and deep fields of saturated colour shot through by sharp, kinetic black and white stripes. Translucent "skins" of pigment recede, offering indefinite glimpses of the body. All these elements converge to create a wondrous effect that is magnified in Duck's recent large-scale canvases.

Duck's compositions are pure, unfiltered communications, inviting a sort of play between the work and viewer. The evident effort and sheer amount of visual information in her works provoke appreciation of her ability, and invites individual interpretation of symbolic elements. The complexity of Duck's imagery never offers final or obvious readings. Duck's work can be found in various collections across Canada and beyond.

The Leamington Arts Centre would like to thank Carolyn Rourke for her generous donation of 1991 I, 1994 II &

Sandie Collins is an accomplished artist in Southwestern Ontario. She earned a Bachelor of Fine Arts from the University of Windsor and has earned international recognition for her inspirational art. She has been presented in over 45 exhibitions; documented in several publications, including Graphics 9 in 1984; and is featured in several public and private collections.

In addition to creating art, Sandie shares her knowledge and technique of the visual arts by teaching students of all ages believing that "Art is one of the ways I make a connection to the universe. I enjoy expressing my interpretation, exploring possibilities, and sharing that joy with others." Most recently, Sandie returned from a 2-month trip to India and is currently working on conveying the inspiration she found there through art. She currently resides in Windsor with her husband, Chris, their matching motorcycles, and her beloved yoga practice. She can be contacted at sandiese@mdirect.net.

Education

B.F.A. 1987, from the University of Windsor, ON. Majoring in Printmaking.



Untitled.
Sandie Collins
1/1 Print

SOURCES

"Adèle Duck: January 30 – May 9, 2010." Art Gallery of Windsor, 2010, www.agw.ca/exhibition/32
"Sandie Collins." Saatchi Art. <https://www.saatchiart.com/sandisea>



WECF: Virtual Gallery Grant



The impact of the COVID-19 pandemic has dramatically affected the Leamington Arts Centre (LAC) by challenging its standard physically based programming. Without in-person visitors, this traditional programming became ineffective and the LAC sought out new ways in which to stay connected with the artists and patrons who the LAC supports and who in turn support the LAC, and in 2020, the LAC was awarded a Virtual Gallery Grant by the Windsor Essex Community Foundation.

The grant is not only for those social distancing, but also benefits those with disability or transportation issues who do not have traditional means to visit art galleries, museums or cultural spaces such as the LAC. The new virtual gallery and programming allows the LAC to accommodate these members of society at risk of being further marginalized. Additionally, Covid-19 meant educators and students have been unable to participate in tours of the LAC. With our virtual programming, we are now able to provide the experiences that teachers are looking for in online platforms.

Furthermore, because of the WECF grant, we now have the means to record and preserve our history and cultural heritage in a technologically advanced manner that will foster education within and development of the arts. WECF funding has enabled the LAC to adapt its physical programming into a modern digital platform, become accessible for those in need, and prepared us for an advancing digital era.

Ultimately, in the short term, the LAC has been able to provide a poignant response to COVID-19, keeping community members engaged and involved in the arts, raising spirits, reconnecting with Windsor-Essex schools in new ways and helping our community to get through COVID-19. In the long-term, this project also creates a new lasting standard as we can now create and establish the infrastructure for the new online arts and culture content. This grant will no doubt help to sustain the LAC and its 50 year history and launch the organization into the digital era which can then be expanded upon through time.

Accolades & Professional Services



The Best of Windsor Essex Awards

The Best of Windsor Essex Awards are a social media campaign organized by Tourism Windsor Essex Pelee Island in an effort to learn from locals where they want to dine, shop, play and stay. We recognize where locals like to go, so do visitors. This campaign is designed to highlight some of the best of our region and share it with the close to 5 million tourists who visit our region annually.

Once again in 2020, the Leamington Arts Centre was nominated for the Tourism Windsor Essex Pelee Island's 5th Annual BEST OF WINDSOR ESSEX awards.

The LAC was a finalist for the ARTS & ENTERTAINMENT – BEST ART GALLERY OR ART SPACE award. The other nominees were: the Art Gallery of Windsor (winner), Art Lab Windsor, Artcite Windsor, and the Urban Art Market.

Chad Riley

Activities & Boards

LAC Director/Curator Chad Riley served his 4th year of volunteer service as Board Member for the Uptown Leamington BIA. The Uptown Leamington Business Improvement Area (BIA) represents over 200 businesses in the Uptown area. The BIA's role is to develop the uptown core through beautification, general improvements and upgrades, promotion, events and marketing.

International Society of Appraisers (ISA)

Riley is also a member of the International Society of Appraisers (ISA) having completed the core course and maintaining his credentials. Through the LAC, Riley provides appraisal consultations and services to Windsor and Essex County. He recently completed the Uniform Standard of Professional Appraisal Practice (USPAP), a course designed to recognize ethical and performance standards for the appraisal profession.

Sharon Suitor

Sharon Suitor joined the Leamington Arts Centre in March of 2020 as Visitor Services & Programs Coordinator. She has a strong interest in the Arts and enjoys painting and attending art galleries, museums and arts festivals. Sharon has a passion for community development, and for working in a not-for-profit organization, making her a perfect fit for the LAC.

Education & Activities

A Leamington resident, Sharon holds a Masters in Communications and Social Justice from the University of Windsor, a B.A. in Communications, Media, and Film and is currently enrolled online with Fanshawe College for Marketing Management. Her previous work experience includes a Film Studies Research Assistantship and Graduate Teaching Assistantships at the University of Windsor. Sharon also has on-going volunteer experience with the Windsor Home Coalition and the Food Bank.



International Society of Appraisers



Chad Riley, Director/Curator is one of approximately 45 appraisers in Canada. As such, the LAC offers a variety of fine art appraisal services for various functions and all our appraisal reports follow International Society of Appraisers (ISA) standards for appraisal writing practice as well as USPAP 2018-19. If you require a formal written appraisal report for insurance or a donation, you are in the right place! The International Society of Appraisers (ISA) is the largest of the professional personal property appraisal associations representing the most highly trained and rigorously tested independent appraisers in the United States and Canada.

Appraisal Services Offered

Written appraisal reports for charitable donations + acquisitions, insurance coverage + claims, resale + liquidation, identifying most suitable markets for resale of fine art, as well as description, identification and arranging authenticity when required.

Types of Property Appraised

Fine art such as paintings, lithographs, drawings, photographs, sculpture.

Types of Property Generally Not Appraised

Entire estates, antiques, jewellery, silver, furniture, china, ceramics, figurines, rugs, baskets, Asian and European items, real estate or business valuations.

About the ISA

The International Society of Appraisers (ISA) is the largest of the professional personal property appraisal associations representing the most highly trained and rigorously tested independent appraisers in the United States and Canada. We are a not-for-profit, member-driven association, formed to support our member needs and to enhance public trust by producing qualified and ethical appraisers who are recognized authorities in personal property appraising.

ISA's membership is diverse and collegial. Our members include many of the country's most respected appraisers, consultants, curators, scholars, gallerists, estate liquidators, auctioneers, and dealers. We pride ourselves on a strong national network of appraisers who draw on highly specialized knowledge, skill, and experience, serving as a resource to our fellow members in a spirit which is unparalleled. Personal property appraising is an evolving profession and the ISA courses continue to advance, reflecting the most sophisticated knowledge and technology available. Additional courses are in the process of development, including a state-of-the-art, comprehensive online learning platform.



Training & Development



Smart Serve

To ensure patrons receive safe and quality service, new LAC staff, Sharon Sutor, completed the online Smart Serve course.

The Smart Serve Responsible Alcohol Beverage Sales & Service Training Program is approved by the Alcohol and Gaming Commission of Ontario (AGCO) as the only responsible alcohol training program for Ontario. Smart Serve is a dedicated advocate for a safer and healthier Ontario. It is required by law to sell or serve alcohol in Ontario. This program is designed for servers, bartenders, hostesses, food and beverage managers, or anyone who is involved in an event where alcohol is served.

Uniform Standards of Professional Appraisal Practice (USPAP) 2020-2021

Chad Riley completed the seven-hour, mandatory USPAP course, required for all ISA appraisers. The Uniform Standards of Professional Appraisal Practice (USPAP) are the generally recognized ethical and performance standards for the appraisal profession in the United States. USPAP was adopted by Congress in 1989, and contains standards for all types of appraisal services, including real estate, personal property, business and mass appraisal. Compliance is required for state-licensed and state-certified appraisers involved in federally-related real estate transactions. USPAP is updated every two years so that appraisers have the information they need to deliver unbiased and thoughtful opinions of value.



Visitor Statistics

Art galleries are commonly one of the main tourism destinations for communities and the LAC is no different for Leamington. As visitor tracking reports the LAC is a major destination and when visitors are in town they also frequent other establishments and generate economic development.

Over 2000* Visitors from Windsor and Essex County and surrounding regions visited the Leamington Arts Centre in 2020.

*2019 visitor stats were over 12,000. 2020 was affected by COVID-19 and lockdown orders.



5/5 Rating on Facebook
2428 Followers on Facebook



4.8/5 Star Rating on Google



1289 Followers on Instagram



423 Mailchimp Subscribers

"I always enjoy my visits the gallery. There is a nice variety of pieces , lots of interesting things going on and the staff has always been friendly and helpful."

- Joel Westlake

"This is a great facility to promote art and crafts. Even though I don't live in Leamington I will be visiting often since my sister in law has recently moved here. I became a member and now have my wire art in their lovely gift shop. Leamington should be proud to have such a nice Arts Centre!"

- Patti Wheeler

"Great showcase for culture and the arts in Leamington!"

- Alberto Bernal

"An incredible gift shop filled with local art work, books, cards and more. Excellent exhibits, and a beautiful rental space. We had our baby shower here, and it was perfect!"

- Katie Omstead

"The staff are friendly, knowledgeable and helpful. The layout and set up is very professional and welcoming. The events are consecutively scheduled and never boring. I love going and seeing/learning from the staff and other artists."

- Kellyz Kraftyz



Venue Rentals

***Due to COVID1-19 group gathering and venue rentals were placed on hold in 2020. In 2019, the LAC was host to over 200 private, corporate, and public venue rentals.**

The LAC is proud to provide a gathering place for the community's programming needs and special events. Our space is available to individuals, businesses, community groups and organizations for private social events such as baby showers, bridal showers, wedding ceremonies, book launches, meetings, educational and business events, and more.

The beautiful main floor galleries offer large spaces for entertaining and socializing with plenty of room for hors d'oeuvres and cocktail tables, buffets, receiving tables, or seated catered dining. It's the perfect unique setting for showers, weddings, anniversaries, book launches, CD releases and more. The galleries are available for facility rentals after 5pm any day of the week including weekends. **some exceptions may apply.*

The large 2nd floor community room is the perfect setting for educational programs, seminars, workshops, meetings and conferences. It comes equipped with a 100" projector screen, tables, and seating for up to 70. The community room is available all hours any day of the week, including weekends.

The lower-level studio space is a great space to get messy with paints, crafts and hands-on work. Studio space is available monthly for artists and arts instructors to hold classes and workshops. It is equipped with its own clean up station, tables, chairs and washroom. It is available all hours any day of the week including weekends.





Venue Rentals

In addition to exhibition space in our galleries, the LAC also offers office space, meeting room space as well as workshop and studio space, plus, it's fully accessible! In 2019, several local business made use of the LAC. Revenues from facility rentals aid in offsetting operating costs so more funds can be used for programing and events. The LAC truly is a building for the community.

***March 2020 all community room rentals were placed on hold due to COVID-19 and remained on hold for the remained of the year.**

In 2020, some of these businesses and organizations who utilized the space prior to COVID-19 included: the Uptown Leamington BIA, the Church of Christ.

Resident Businesses



New office located in downtown Leamington. Book an appointment today, call 519-995-0057 .



Open by Appointment Only

A certified (A+, N+, MCP, MCSE) specialist providing high quality certified refurbished laptops and desktops.

IMPERIUM
CONSTRUCTION & DESIGN

Statement of Revenues & Expenditures

Report to the Members

The accompanying financial statements of the South Essex Arts Association which comprise the statements of the financial position as of December 31, 2019 have been externally reviewed by Albuquerque Accounting.

Board of Director's and Treasurer's Responsibility for the Financial Statements

The SEAA Treasurer and LAC Director are responsible for the preparation and fair presentation of these financial statements as approved by the Board of Directors in accordance with Canadian accounting standards for not-for-profit organizations, as shown herein and prepared by Albuquerque Accounting.

Opinion

In the Board's opinion, the financial statements present fairly, in all material respects, the financial position of the South Essex Arts Association as at December 31, 2020 and the results of its operations and its cash flows for the year ended December 31, 2020 and in accordance with Canadian accounting standards for not-for-profit organizations.



129 Erie Street South
Wheatley, Ontario N0P2P0
Telephone: 519-995-0057
E-mail: katherine@albuquerqueaccounting.ca

NOTICE TO READER

On the basis of information provided by management and documented by myself, I have compiled the balance sheet and income statement of South Essex Arts Association as at December 31, 2020.

I have not performed an audit or a review engagement in respect of these financial statements and, accordingly, I express no assurance thereon.

Readers are cautioned that these statements may not be appropriate for their purposes.

Albuquerque Accounting
Katherine Albuquerque

Certified Professional Bookkeeper
Wheatley, Ontario
March 14, 2021

South Essex Arts Association

Balance Sheet As at December 31, 2020 (Unaudited)

	2020	2019
Assets		
Cash	\$ 73,664	\$ 5,643
Accounts Receivables	0	3,560
Restricted Funds (Investments)	16,995	21,995
	\$ 90,659	\$ 31,198

South Essex Arts Association

Income Statement As at December 31, 2020 (Unaudited)

	2020	2019
Revenue		
Granting Agencies	\$ 100,871	\$ 54,458
Programs & Exhibits	8,345	38,242
Market Place & art Supply Sales	9,842	16,244
Investment Income	0	2,024
Public Support (Note 3)	56,908	71,249
Facility Rental	15,023	22,868
Other Revenue	1,456	2,556
Total Revenue	\$ 192,446	\$ 207,641
Revenue		
Market Place & Art Supply Store	\$ 11,139	\$ 15,538
Programs & Exhibits	43,818	66,629
Development	2,402	3,271
Building, Facility & Occupancy	11,338	21,118
Education & Public Programs	888	9,961
Business Administration	98,209	103,843
Professional Fees	1,772	3,567
Total Expenses	\$ 169,566	\$ 223,927
Net Income	22,880	(16,286)

South Essex Arts Association
Notes to Financial Statements
For year ending December 31, 2020
(Unaudited)

1. Incorporation

The company is incorporated without share capital under the laws of the Province of Ontario.

2. Financial Statements

Financial statements have been modified for 2020 in an effort to represent data in accordance to others in the industry.

3. Public Support

Public support includes \$46,235 in donations in kind, these are entered into the income statements in year of donation.

4. Permanent Collection

Fifteen pieces of art totaling \$38,450 were donated during the year. Permanent collection increases by same amount in 2020.



Your Interest and Support in the *South Essex Arts Association* helps build a richer and brighter community. Thank you!



The LAC is a proud member of the OAAG offering reciprocal benefits to over 80 institutions. www.oaag.



The LAC is a member of Volunteer Canada and has adopted their code and we are committed to demonstrating our value in volunteerism.



The LAC is a not-for-profit organization reliant on community support.



The SEAA/ LAC recognizes the generous support of the Municipality of Leamington and the Southpoint Sun.

Cover Images:

Annual General Meeting, 2020
The Truth Has Legs: Talysha Bujold-Abu, 2019

Leamington Arts Centre | 72 Talbot Street West Leamington, ON N8H 1M4
519.326.2711 info@leamingtonartscentre.com