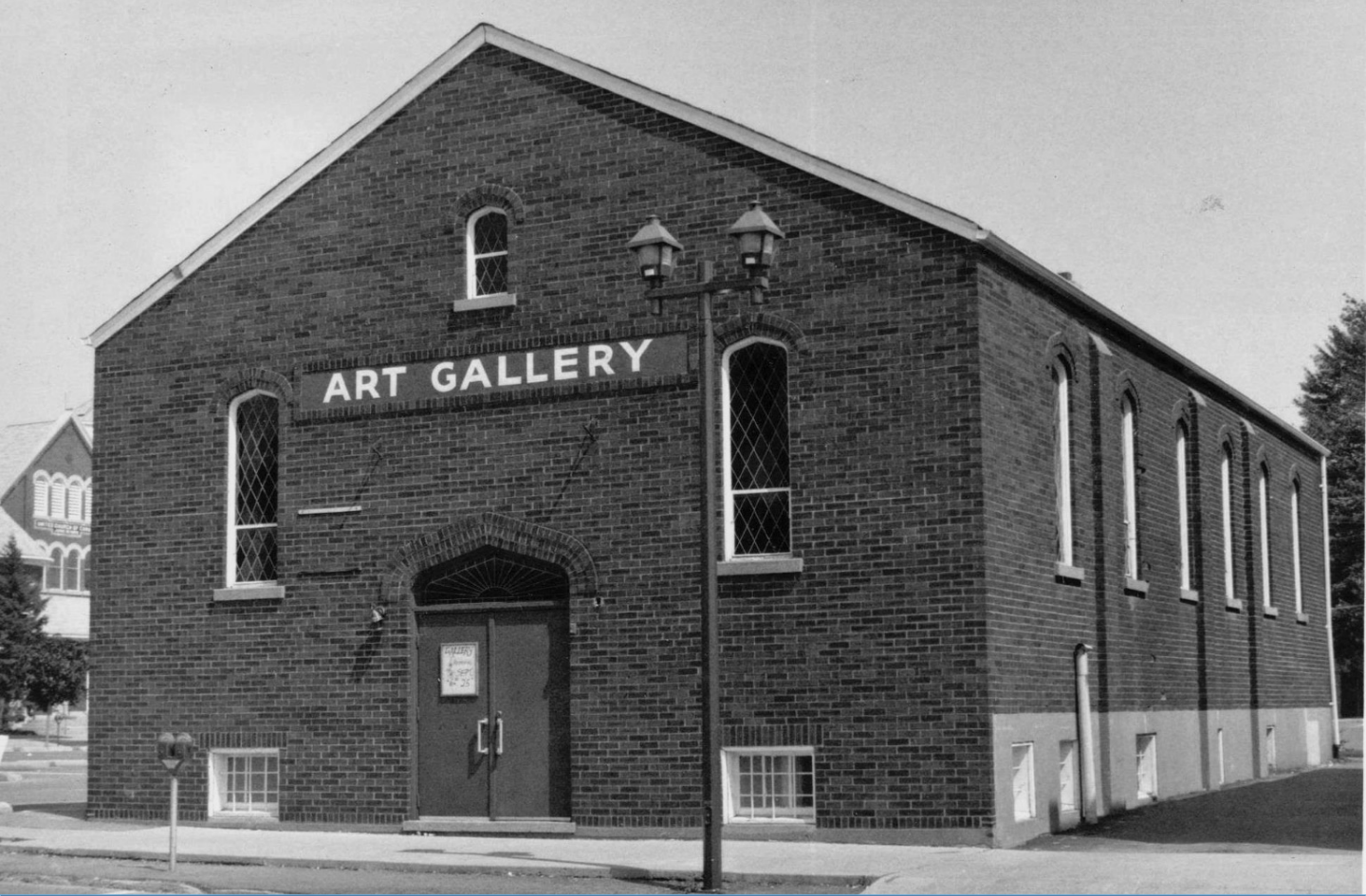




Create
Sustain
Celebrate

ANNUAL REPORT 2019





From our humble beginnings to now, thank you for helping us grow to become a strong rural community through arts and culture.





Table of Contents

WFCU Painting Competition + Exhibit, Awards Ceremony, 2019

| | | | |
|----|--|----|--|
| 4 | About the SEAA & LAC Mission Statement Values & Vision Statement | 24 | Education Programs |
| 5 | Message from the Chair | 25 | The Market Place: artist market – café – wine bar |
| 6 | Message from the Director | 26 | Art Supply Store |
| 10 | Board of Directors Staff & Volunteers | 27 | Permanent Collection |
| 11 | Volunteer Program | 28 | Notable New Acquisitions |
| 12 | Canada Summer Jobs | 29 | 2019 Acquisitions |
| 13 | Donors, Sponsors, Members & Supporters | 30 | Accolades & Professional Services |
| 15 | Corporate Sponsors & Partners | 31 | International Society of Appraisers |
| 16 | Exhibitions | 32 | Training and Development |
| 17 | 2019 Exhibitions | 33 | Visitor Statistics |
| 19 | Community Gallery + Meeting Space | 34 | Venue Rentals |
| 20 | 2019 Events & Programs | 36 | Statement of Revenues & Expenditure |
| | | 41 | Contact & Credits |

ABOUT THE SEAA

The South Essex Arts Association the governing body for the Leamington Arts Centre. The SEAA is a not for profit charitable organization established in 1971 dedicated to creating, sustaining and celebrating the arts within our community.

Registered Charitable Not For Profit Organization No. 11915 7543 RR 0001

ABOUT THE LAC

The Leamington Arts Centre (LAC) is located in the heart of South Western Ontario's beautiful uptown Leamington in one of the town's many wonderful heritage buildings. The LAC is a 10,000 square foot, state-of-the-art, and fully accessible facility which offers 4 exhibition spaces, education studio spaces, meeting space, a gift shop and art supply store.

The LAC is a community meeting space and hub for the arts and culture in Leamington and Essex County featuring up to 40 diverse exhibitions each year in its 3 exhibition spaces, a permanent collection, appraisal services, tours, facility rentals, artist markets and much more.

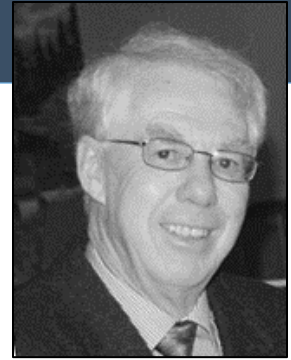
MISSION STATEMENT

The South Essex Arts Association is dedicated to creating and sustaining a celebration of the human spirit through the nurturing of the arts within our community.

VALUES & VISION STATEMENT

The South Essex Arts Association, in partnership with the various art mediums and other disciplines within the arts culture, promotes, fosters and stimulates the appreciation of the arts. Through artistic events and exhibitions with a special focus on the work of local artisans, SEAA assists in preserving all forms of art within the community.

Message from the Chair



If tumultuous can mean “busy” then that is the best description for 2019 for the Leamington Arts Centre.

The year began with some planning meetings, moved into the Arts at the Marina stage and finished with minor revisions and interior changes to the gallery.

In early spring the LAC Mayor Hilda MacDonald attended a session with the board of directors with talk mainly centring on municipal funding, with the hope the LAC's support will be reprogrammed.

Financially, the LAC had its best year ever with funds totalling almost \$140,000 and only \$50,000 of that coming from the municipality.

The \$80,000 raised by the gallery comes from a wide assortment of sources, ranging from rent to wine sales to art supplies, donations and more.

Several thousands of dollars were spent to purchase equipment and other items in an effort to ease the workload.

A major change came when the board agreed to turn the small centre gallery into an “artist market, café, wine bar, “ a members sales outlet. It has been well-received by the public, and that change too eases the workload centralizing alcohol sales.

The board also approved several art purchases to add to its own collection using funds from the Williams estate solely for that purpose.

The Arts at the Marina show rebounded with more exhibitors and again became the LAC's single largest fund-raising project.

The remainder of the year was busy with the gallery revisions and working with municipal staff on the very successful Friday night “Mill St. Market.”

All of this only touches on a tiny fraction of the work that the gallery staff, director Chad Riley and assistant Sophie Hinch, have devoted to make the gallery a success. And there is no doubt something needs to happen to ease that workload, or the gallery will stagnate.

Now, I thank the dedicated board members who devote their hours to the gallery's betterment. Unlike many organizations all but one of the board members (me) have jobs, meaning they are truly interested in the arts centre.

Mike Thibodeau

Chair, South Essex Arts Association

Message from the Director/Curator

"Great things are done by a series of small things brought together."
Vincent van Gogh



2019 was a triumphant year with a series accomplishments all coming together. The year distinguishing itself with the highest ever annual visitor attendance, and the LAC's highest grossing financial year in its nearly 50-year history. However, this did not come without expenses. Many hours of overtime and personal sacrifices from staff and volunteers who went above and beyond exceeding expectations to keep up with the activities afforded many of the successes in 2019. The volunteer Board of Directors, gallery and event volunteers who stepped up proved to be a tremendous relief in times of need.

Each year the LAC reviews and adjusts to community needs; growing and adapting its programs to better serve residents, attract tourism and economic development. The LAC would not hold the position it holds today as a recognized and thriving regional art gallery if not for the critical support and continued financial investment from the Municipality of Leamington; its interest in our activities and the many ways it also adapts its forms of support to the LAC have contributed to this organization's overall success and in turn, a developing and growing arts and culture community by which we are also supported.

As we look back now on 2019 we see the rewards of our sacrifices and our hard work, as the LAC is one step bigger, and one step better. The LAC is grateful to the community and the entire region, from our partners, sponsors, donors, visitors and artists who choose the LAC as a place to visit and hang their artwork; to all those who attend, contribute and participate to give meaning and cause to our programs and activities, this great year has also been because of you. Your presence has positioned forward changes for 2020 as we again elevate and set new standards for operations and delivery of services.

It is for these reasons and many more that the LAC was a finalist for the 4th year in a row for *Best Art Gallery* in the Tourism Windsor-Essex Pelee Island's *Best of Windsor-Essex* annual awards.

Exhibits & Events

The exhibition season was complete with 32 different exhibits in total from January 2 through December 21. These exhibits included 11 solo exhibits, 11 open call exhibits, 8 group exhibits, and 2 permanent collection exhibits. The exhibits featured in the range of 1200 works from all over the region, not including the hundreds of work featured in the Christmas Artist Market or the Market Place.

Once again, one of the more notable community exhibitions for the year was the, *21st Annual Juried Student Art Show*. This exhibit filled all three of the exhibition spaces on the main floor with 311 works by 197 students, from 9 Secondary Schools all over the county thanks again to the participation and interest of local student artists, their devoted teachers and parents and through the sponsorship of the Rotary Club of Leamington and the Kiwanis Club.

The highly regarded *Anything's Possible Amateur Photo Contest* had a great response again with 181 photo entries in the 3 categories of Building, Smartphone Photography and Wildlife. Thanks to our generous sponsors Speedprint, who offered printing and canvas wrap gift certificate prizes and Framing by Anna who meticulously completed the matting once again and donated a custom framing gift certificate to the People's Choice winner.

The 2nd annual *WFCU Painting Competition + Exhibit* saw an increased response with 60 entries in total from artists in 11 different cities, including Amherstburg, Chatham, Detroit, Kingsville, LaSalle, Leamington, Staples, Stoney Point, Tecumseh, Wheatley, and Windsor, showing once again that the LAC truly has grown into a region art gallery.

The LAC proudly partnered with the Point Pelee National Park again, this time to exhibit works by the artists from the new artist in residency program. Other exhibit partners also included the Shooters Photography Club, the Remix Collective, the Half Century Club and LeyDan Artist Group.

The principal fundraiser and event, *Arts @ the Marina* was revamped for 2019 with a new layout, adjusted vendor rates and spaces as well as the addition of a new 19+ alcohol area, which featured Aleksander Estate Winery and Wolfhead Distillery. The event admission also changed slightly from free, to admission by donation, although not mandatory to be admitted. The changes proved favorable with a 10% increase in the number of vendors over the previous year and a revenue increase of 40% to help support the LAC throughout the year.

After the success of *Art in the Parkette* in the fall of 2018 and again in partnership with the Tourism and Culture Department of the Municipality, formed the *Mill St. Markets*; a series of night markets featuring a variety of artisan, music, food and alcohol vendors in the LAC's newly redesigned backyard of Mill St. With 7 markets held each month from May through November, the LAC assisted with vendor registration and payments, insurance, organizing and promoting, and in return retained a portion of the vendor registration fees, which added to the financial success of 2019. The LAC also participated in each market with a tent featuring local wines and spritzers. The LAC gallery was open for each market, pairing its monthly opening receptions to each event while serving wine and craft beer inside, again further generating greater visitors numbers and funds.

New for 2019 was the *What's it Worth? Art Evaluation Day* with guest appraiser Julie Riches of Riches Appraisal and Consult from Toronto. Riches donated her time and expertise to aid in hosting a road show type appraisal day where guests could bring in valuables to receive a verbal evaluation. In the fall, the LAC displayed and hosted the *Hometown Heroes* Veterans banners, which gathered nearly 200 visitors to the reception, including guest speaker Mayor MacDonald. The LAC also partnered with the Consulate of Mexico to feature a film screening of academy award winning film, *Roma*, and lent aid to *Hogs for Hospice* with their vendor area, and the Leamington Library with the *Leamington Loves Reading* art contest with judging, again alongside Mayor MacDonald.

The year finished off with *A Signature Christmas* indoor artist market, which was again a creditable event featuring 16 artisan displays; an increase over the previous year and filled the entire main floor of the LAC, attracting shoppers from all over the area.

Grants & Fundraising

A vital grant from the Municipality of Leamington in addition to the use of the facility and a municipal budget for repairs and maintenance are at the core of funding LAC operations, community programs and services.

Funding from Jobs Canada was once again received for one additional staff from June through August to aid with increased tourism traffic, as well as the special events, *Arts @ the Marina* and the *Mill St. Markets*. With the additional staff resources, the LAC was able to increase open to the public visiting times by 7.5 additional hours per week, not including extra hours for events and receptions.

The LAC also received an Uplift grant from the Uptown BIA to have designed and installed etched glass window vinyl on 4 primary windows along Talbot St. The designs enhance the overall appeal of the facility by covering the backsides of interior walls, while also promoting some of the many activities at the LAC from exhibits, events, venue rentals and the art supply store.

Other annual fundraising initiatives including the President's Appeal, as well as the CRAVE Family Pub & Grill and A1 Chinese Restaurant Fundraisers all continued and were profitable. The LAC also held two 50/50 draws, which generated modest additional funds.

Donors, Members, Volunteers & Supporters

It is by way of the generous support from donors, members, volunteers and supporters that the LAC has a thriving purpose. Support by way of individual and corporate membership was incredibly strong in 2019 with over \$62,000 in in-kind donations of goods and services to offset operating expenses and gain investments, and nearly \$9,000 in monetary public support.

Notable donations in 2019 include 10 large-scale wax pencil drawings by Leamington native, Graydon Dyck gifted to the LAC permanent collection from Mr. Bob Ceh of Toronto, Ontario. The works include vintage automobiles and iconic movie stars, with a total value of \$35,000. Carolyne Rourke of Windsor, Ontario donated 2 large Adèle Duck works, one painting and one intaglio print, with a combined value of \$13,500. The LAC also acquired many other works through donation in 2019 as listed in the annual report. With these additions the permanent collection grew by nearly \$50,000 in a single year.

Reid Funeral Home made a sizable donation which allowed a custom LAC branded tent to be fabricated and used at the Mill St. Markets, as well as Arts @ the Marina. The tent was a much-needed investment and will continue to be used at future events, promoting the LAC and saving funds from tent rental fees.

The Southpoint Sun continued to support advertising initiatives by sponsoring our weekly newspaper ad, a value of over \$9,000 in exchange for the main gallery's naming rights. Other annual sponsors, to name a few, Speedprint, Custom Framing by Anna, the WFCU Credit Union, The Rotary Club and Kiwanis Club, the Lions Club, Caesars Windsor, the Lesson Lounge, the Mix 96.7FM and Country FM all also continued their support to specific exhibits and events.

Joel Westlake, member and volunteer musician made an unconventional yet valuable donation of an electric base guitar, which was sold for \$1200, and the profits retained by the LAC.

As a member of Volunteer Canada, the LAC adopted their code of ethics into the LAC volunteer program developed in 2017. The program was launched in 2018 and since that time, Sally LaPla and Chao Zhao each have contributed over 200 hours of regular volunteer service in the areas of Docent + Administrative Assistant and Facilities + Events Assistant. These dedicated volunteers have significantly aided to the success and ongoing operations of the LAC through their support of the administrative staff. The additional aid of many other volunteers as listed in the annual report also significantly contributed to the workforce, making major events such as the *Mil St. Markets* and *Arts @ the Marina* possible.

The SEAA/LAC volunteer Board of Directors remained the same as the previous year with no changes to its members or to the executive committee. This dedicated group continually acts with patience and acceptance, which has granted not only many opportunities for me to present an abundance of progressive ideas through the years to keep the organization moving forward, but their support has also made the LAC a great place to work and to develop personally.

Education & Learning

The LAC strives to help enrich our communities understanding and appreciation for the arts and culture while assisting to enhance skills and talents for both youth and adults by providing a variety of art education programs.

In 2019 the LAC continued to work with Astrid Tobin and Sally LaPla to host the *Open Studio* days where artists could drop in, network, share, and collaborate on work through peer mentoring.

The *MESH: artist network meetings*, held on select Saturday afternoons continued with a series in January and one in April lead by guest speaker Anna Lamarche from Custom Framing by Anna.

Corks & Canvas wine and paint nights with the support of the Uptown Leamington BIA were held on February 8, May 10, and December 13, themes included Tom Thompson, Paul Gauguin and Claude Monet.

Gallery tours were facilitated for free to local schools and organizations including, Bennie Early Years, the South Essex Community Council and Community Living Essex County.

Facility

In an effort to support the steady earnings of the Art Supply Store while also meeting the need for an expanded and enhanced gift shop, the middle gallery was repurposed as the new Market Place, artist market, café and wine bar. The space was renovated with shelving, chalkboard paint, signage, lighting, display cabinets, a bistro table/chair set, a bar and a fridge; inspiring daily visitors to stay longer, sit and have a coffee or glass of wine. The bar area also allows the LAC to more proficiently and professionally host venue rentals as well as the LAC's regular exhibit receptions. The new Market Place was launched in December and has proven to be a welcomed and profitable addition.

Much of the fall was spent working with architect Joe Passa and the Municipality of Leamington on an Investing in Canada Infrastructure Program (ICIP) grant application, which would expand the LAC facility to the West. The addition and renovations would correct many of the deficiencies to the current aging building; further retrofit the facility from a post office to a state-of-the-art contemporary gallery and tourist destination. The expansion would also nearly double the LAC guest capacity enabling greater possibilities for programming and venue rentals. Grant results will be known the summer of 2020 at which time, should the grant be successful, further planning and design work will be done. The expansion would be a game-changer for the LAC and the uptown creating a commanding flagship art gallery upon entering the uptown core and to the newly redesigned Mill St. where many cultural activities are held.

To the 2nd floor, the LAC welcomed new tenants, Albuquerque Accounting, the Branding Loft and Fitnutrition Canada. Spanglish Legal Services continued their tenancy through 2019. The Community Gallery + Meeting Space was very busy and continues to be a welcomed source of additional income with average weekly rental of 4 evenings each week all year long. Some of the renters of the space include, RBC Bank, Caldwell First Nations, the Uptown Leamington BIA, Windsor Factory Supply and Libro Cedit Union.

The LAC also hosted several private events ranging from bridal showers, baby showers, anniversary parties and retirement parties. Between the Community Meeting Space and private Venue Rentals, the LAC hosted over 200 events in 2019 and welcomed many new faces through its doors.

In Summary

The LAC had an extraordinary and packed year complete with growth and strength in its programming and numbers. Approaching nearly 50 years, the organization continues to evolved and grow with the community and has remained a bright spot for our uptown that attracts tourist and residents seeking an active arts community and hub such as the LAC.

While the hours, the tasks, and the demand on staff and volunteers were at many times challenging, they are now revered as work well done; and it is with great thanks to all LAC friends for your support and patronage that I am pleased to present the 2019 Annual Report and all we have accomplished together.



Chad Riley, MFA, ISA
Director/Curator



Board of Directors, Staff & Volunteers

Stories From The Old Testament, Bryan S. Halls, 2019.

CHAIR

Mike Thibodeau

VICE CHAIR

Sheila McBrayne

TREASURER

Penny Belluz

SECRETARY

Jan Bateman

EX-OFFICIO

Tim Wilkinson

Derek Friesen

Maria Jose

Jill Nicholson

Mary Jane Nohra

Shelly Quick

Arlene Sinasac

DIRECTOR/CURATOR

Chad Riley

PROGRAMMING & CURATORIAL ASSISTANT

Sophie Hinch

PROGRAM OUTREACH COORDINATOR (June – August)

Jillian Suta



WFCU Painting Competition + Exhibit, 2019

The LAC is a member of Volunteer Canada and has adopted their code and we are committed to demonstrating our value in volunteerism.

Who can volunteer? Everyone! Volunteers at the LAC are as diverse as the art we display and there are many unique opportunities to fit your interests and time. Knowledge of art is not necessary, just an appreciation for art and the enthusiasm to share it with others.

Docent + Administrative Assistant

The Docent + Administrative Assistant will welcome and engage patrons and help them connect with the art and have a memorable visit; inform patrons of current exhibits, upcoming events, classes and LAC activities of interest; conduct tours of the gallery for groups and schools, and utilize techniques of dialogue and inquiry. The docent encourages patrons to participate, ask questions and become informed and enthused about the LAC, its exhibits and activities. As Administrative Assistants, will help with administrative and office duties, fundraising and marketing campaigns, mailings, data entry and record keeping; other clerical work such as answering the phone and directing class and inquiries, taking messages and other basic office related tasks.

Facilities & Events Assistant

The Facility + Events Assistant will assist with preparation, coordinating and set up of programs and activities at the LAC, such as exhibit installation and de-installation, artist receptions, LAC private rental events and LAC art classes; assist with facility maintenance.

A special thank you to our regular weekly volunteers for their ongoing dedication and support. These valued volunteers include: Sally LePla and Chao Zhao.

Amanda Fox
Anna Lamarche
Astrid Tobin
Brandon Lefrançois
Brenda Jones
Brenda Zakel
Brian Cornies
Chao Zhao
Charles Houle
Charlotte Murray
Chris Osborn
Cor Boon
Dale Butler
Danny Bateman
Daryl Driedger
David Light
Deanna Sherman
Denis Bastarach
Dennis Riley
Derek Friesen
Diane Riley
Dick Grolman
Doug Biekx

Douglas Bedard
Douglas Bedard
Ed Roach
Ella Riley
Emily Bateman
Eric Naylor
Fred Gare
Gail Grant
Gerri Thibodeau
Gerry Hucko
Gloria White
Harmony Shaw
Henry Noestheden
James Ives
Jessie Riley
Joan McDonald
Joel Westlake
Julie Riches
Katherine Garant
Kathryn Parent
Kathy Auyge
Ken Friesen
Kyra Cole
Laura Wilkinson

Laura Wilkinson
Lisa Bradt
Lorraine Maurice
Louise Groeneweg
Lukasz Bemben
Mackenzie Dyck
Madeline Butler
Marg Ross
Martha Renaud
Mike Ondrovčík
Noah Riley
Paul Jones
Phil Ruzsak
Rick Menard
Rick Taves
Ryan Bateman
Sally LePla
Sandra Fox
Sarah Ouellette
Steve Morin
Susan Ross
Tina Groelman
Welli Horne



Canada Summer Jobs

THE FAR OUT SHOW, group exhibit, November 2019

Each year for the past several years the LAC has been successful at obtaining funding through the **Canada Summer Jobs** Program for employees under the age of 30. Job placements typically range 6-12 weeks, in 2019 the LAC was successful in receiving funding for one additional staff for 10 weeks. This extra staff allowed the gallery visitor hours to increase by 8 additional hours per week with the gallery being open on Sundays for the months of July and August during peak tourism season.

Program Outreach Coordinator (June 26 – Aug 30)

Under the direction of the LAC Director, the Program Outreach Coordinator will coordinate the SEAA/LAC community outreach and community engagement initiatives; and will work to increase the organization's presence in the community and online. Responsible to the Director, the Program Outreach Coordinator will develop and execute effective community outreach initiatives which build new relationships and enhance existing relationships with patrons, businesses and organizations; develop and deliver marketing and advertising strategies which increase awareness of all SEAA/LAC programs and services and attract greater sponsors and donors; use traditional media and social media to enhance SEAA/LAC's visibility within the community; assist in the day to day operations of the Leamington Arts Centre; maintain a positive and professional attitude; display productive and accurate workmanship; adhere to SEAA/LAC policies and bylaws.

Program Outreach Coordinator: Jillian Suta

I am so grateful to have had the opportunity to work at the Leamington Arts Centre for another summer. During my time here I have been able to meet new artists and expand my own creative processes, assisting in placing myself within the Essex County arts community; the experience has been invaluable to me.

My summer was spent preparing and wrapping up for the annual Arts @ the Marina event and the new monthly Mill Street Markets. I also assisted with organization and revitalization during minor renovations and reorganization. It was great spending time with Chad and Sophie discussing the endless possibilities for the gallery space, upcoming exhibits, and what the LAC has to offer the public and its members. It has been great to see how far the space has come in the 4 years since I had worked here last.

Jillian Suta
Program Outreach Coordinator



Government
of Canada

Gouvernement
du Canada

Canada



THE TRUTH HAS LEGS, Talysha Bujold Abu, 2019

Donors, Sponsors, Members & Supporters

The South Essex Arts Association/ Leamington Arts Centre seeks donations from individuals as members and donors to support vital programming such as exhibitions, events and education programs. The South Essex Arts Association wishes to acknowledge and recognize the generosity of new and renewing members whose gifts were received in 2019.

LIFETIME MEMBERS

Dr. and Mrs. Kelley
George Alles
Harold Burton
Harry Enns
Ken Friesen
Pat O'Heron
Phyllis Nelson
Walter McGregor

CHAMPION OF THE ARTS (500+)

Allan and Marilyn Scase

PATRON OF THE ARTS (250+)

Mary Anne Kazuke

FRIEND OF THE ARTS (100+)

Adam & Sheila Hubbard-
Goodfellow
Marg Ross

NOT FOR PROFIT (\$50)

Leamington District Chamber of
Commerce

STUDENT (\$20)

Caroline Blais
Tina Rouhandeh
Alex Anzovino

FAMILY (\$40)

Donna Hyodo
Tony & Lois Duncan
Brigitte Hanchard
Peter and Astrid Tobin
Lloyd and Marilyn Brown-John
Joe and Christiana Tagliapietra
Marlene Woodrow
Brian & Karen Scott
Layne & Elaine Van Loo
Jan Bateman

INDIVIDUAL (\$30)

Penny Belluz
Renee Helling-Laur
Laura Kaake
Deb Marentette
Jim McTavish
Ann Roberston-Seigel
Deanna Sherman
Beth Ann de Sousa
Donna Walton

HONORARY

Leon A. Barlow
Pat Beemer
Melissa Beirouti
Michele Boyle
Highbury Canco
Jane Cox
David Derkatz

HONORARY

Karen Drummond Seguin
Kelly Flaming
Nancy Fram
Bob Gallagher
Natalie Grieco
Brenda Henry
Melissa Jamrog
Floydilou Kerr
Terra Koop
Anna Lamarche
Leamington Lions Club
Pavlo Lopata
Petro Lopata
Heather Mallaby
Tom & Catherine Mansell
Laurie Masse
Betty McCready
Vicki McKay
Steve Morris
Dave Paddick
Kathryn Parent
Luanne Ribble
Brian Schentag
Dianne Schmidt
Katlyn Schuurman
Cheryl Scorrar
Rob Sieler
Esabel Silva Cacilhas
Speedprint Ltd
Caesars Windsor
WFCU Credit Union

Donors, Sponsors, Members & Supporters

ARTISTS (\$25)

Robert Affleck
Barbara Alkemade
Kathy Anderson
Caroline Ashpole
Charly Badaoui
Michael Barrett
Mary Bartsch
Douglas Bedard
Anne Benedict
Tara Benson
Shannan Benson
Biblioasis
Mari Biehn
Lou Ann Bigley
Robert Bishop
Janice Boldt
Jodi Brown
Louise Campbell
Emily Carruthers
Antony B. Collings
Ellen Marie Cooper
Jane Cox
Rochelle Craig
Nancy De Cairos
Greg DeHetre
Elizabeth deLange
Krystle DelBen
Trudy Dempsey
Ruth Derkach
Paul C. Deschamps
Dorilee Dickens
Janet Domarchuk
Glen Donaldson
Kristen Dube
Kristyn Dunnion
Helena Dyck
Pete and Judith Dzandzalas
Gerald Enns
Marilyn Fox
Catherine Anne Fox
Miklos Galata
Craig George
Gianni Giotol
Dorit Girash
Jodi Green

Christine Gyski
Sandie Gunning
Carolyn Hardy
Leanne Hayes
Beverly Hill
Rob Holiga
Kelly S. Hopkins
Marilyn Hoyer
Gerry Hucko
Barbara Jean Jack
Jacquie Jacobs
Mary Johnston
Mary Kendrick
Mariano Klimowicz
Vivian Klinck
Rosalind Knight
Cris Kohl
Terra Koop
Laurie Langford
Sally LePla
Nancy Longeway
Toni MacDonald Wells
Kelly MacLellan
Brian Mally
Darlene Martens
Laurie Masse
Michael Mastronardi
Estelle Mayer-Linklater
Vicki McKay
Joan McNeill
Andrea Mercier
April Mills
Lorraine Moon
Leyla Munteanu
Arlene Murphy
Kelly O'Rourke
Jim Oglivie
Maeve Omstead Johnston
Mike Ondrovci
Sherrie Piens
Carolynn Queale
Shelly J. Quick
Hazel Riley
Katherine Roth

Shelly Anne ROUNG
Lynda Ruddock-Rousseau
Alice Sacharoff
Cheryl Scorrar
Lee-Anne Setterington
Dan St Pierre
Todd and Sherry Stahl
Del Stewart
Irina Teske
Mike Thibodeau
Kelsey VanPoucke
Irena Vucajnk
Donald Waffle
Leon Walker
Joan Watton
Susan Weekes
Patti Wheeler
Sarah Whittall
Nancy Whittle
Sylvia Whitton Newman
Beverly Winseck
JoAnne Zamparo
Chao Zhao



In My Mind's Eye, Mike Ondrovci, 2019

Corporate Sponsors/Partners

The South Essex Arts Association/ Leamington Arts Centre seeks sponsorships from corporations and other organization in partnership to support vital programming such as exhibitions, events and education programs. The South Essex Arts Association wishes to acknowledge and recognize the generosity of new and renewing sponsors whose gifts were received in 2018.

A1 Chinese Restaurant Leamington
Albuquerque Accounting
Aleksander Estate Winery
Arts Council Windsor & Region
Art Gallery of Windsor
ArtBuild Ontario
Artcite Inc.
Blackburn Radio
The Bloomin' Gardener
Bradt's Butcher Block
Brandsource Gabriele
Caesars Windsor
Chances Gaming Lounge
Country FM 95.9
Caldwell First Nation
Cardinal Carter
City of Windsor
Cowlick Studios
Crave Family Gill & Pub
Daytripping
Del Fresco Pure
École Secondaire Catholique L'Essor
Essex District High School
Essex Free Press
Friends of Point Pelee

Gabriele Brandsource
Grove Brewhouse
Heinz Jordan
Highbury Canco
Ives Insurance
Hogs for Hospice
International Society of Appraisers
JDC.ca Inc.
Kingsville District High School
Kiwanis Club of Leamington
Lakeside Bakery
Leamington District Memorial
Hospital
Leamington District Chamber of
Commerce
Leamington District Secondary School
Leamington Lions Club
Libro Credit Union
LoreComputers
MC Business Solutions
Ontario Arts Council
Ontario Association of Art Galleries
Passa Associates Architects
Pener Properties Remax
Photography & Framing by Anna

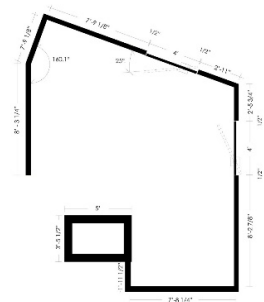
Rotary Club of Leamington
Reid Funeral Home Limited
Sandwich Secondary School
Security One
Shooters Photography Club
South Essex Community Council
Southpoint Publishing
Speedprint Ltd.
TechSoup Canada
Tecumseh Shoreline
Tecumseh Vista Academy
The Bank Theatre
The Branding Loft
The Mix 96.7FM
The Municipality of Leamington
The Lesson Lounge
Tourism Windsor Essex & Pelee Island
University of Windsor
Uptown Leamington BIA
Vanguard Youth Arts Collective
Westview Freedom Academy
Wilkinsigns
Windsor Endowment for the Arts
Windsor Family Credit Union





The LAC is a state of the art gallery which offers three exhibition spaces with over 300 linear feet of continuous wall space and 3000sq/ft of floor space a gift shop, art classes, workshops and meeting spaces. The LAC is one of the area's paramount places to view modern art with an emphasis on local and aspiring artists and artisans.

Admission to the LAC is always free, donations are always appreciated. And be sure to join us each month for the new exhibit opening receptions where you can meet the artists, view their works, meet new people, network and collaborate with other creative minds, and share in the enjoyment of the arts. Food and a variety of cocktails are also served from the Market Place bar and café.





2019 Exhibitions

**Zip Code (N8H 1M4). Curated by Mike Ondrovick. 2019*

January 2 – February 2

ANYTHING'S POSSIBLE: AMATEUR PHOTO CONTEST

This annual exhibit features striking photographs in 3 categories: Wildlife, Smartphone Photography, and Buildings. Sponsored by: Speedprint Ltd. & Framing by Anna

February 5 – March 2

***ZIP CODE (N8H 1M4)**

Zip Code is an exhibit of selected works from the region by the guest curator Mike Ondrovick. The exhibit's focus is to bring together a collection of efficacious works in a variety of mediums and subject matter throughout the artist's careers.

THE HENRY COLLECTION: Municipality of Leamington

The Henry Family traveled the globe collecting art and artifacts from around the world and as far away as East Asia. The collection includes oil paintings from Canada and the United States, porcelain figurines from China, and jade sculptures.

NEW ACQUISITIONS: LAC Permanent Collection

The SEAA/LAC's collection is of great pride amongst its staff, members, and constituents. We take seriously our mission to enrich culture through the collection and preservation of art.

TWENTYfive%: Group Exhibit

The LAC put out a call to all local artists and those who answered were each given a blank canvas and a 25% off coupon for art supplies from the LAC art supply store. The rest was up to them!

March 5 – March 30

WFCU CREDIT UNION PAINTING COMPETITION + EXHIBIT

The WFCU Credit Union Painting Competition + Exhibit is an incredible opportunity for emerging, mid-career and established artists to present their most accomplished works at the LAC for a chance to win cash prizes. Sponsored by: WFCU Credit Union

INCONVENIENT LANDSCAPES: Sophie Hinch & Ina Vu

A two person show exploring identity and culture in relation to Place.

ART ON CULTURE: the exhibit

Granted by the city of Windsor through the Arts Culture and Heritage Fund, Art on Culture is a line of artistic clothing developed by local artists and designers with the intention of showcasing what Culture means and looks like to them.

April 2 – April 27

JURIED STUDENT ART SHOW: 20th Annual

The LAC presents the 21st Annual Juried Student Art Show featuring works by Secondary Students from across Essex County. Sponsored by the Rotary Club of Leamington & the Kiwanis Club.

May 1 – May 26

INCUBATION: Flock Fest

The Leamington Flock Fest is an annual arts event which brings the community together to embrace the arts. The Flock Fest is an exhibition of work representing the journey of creative exploration, connecting and soaring past our personal limits.

CARS & STARS IV: Graydon Dyck

Over his 45 year career, Dyck complete thousands of paintings and created hundreds of car and figure movement sculptures. His paintings are in many private and public collections across Canada and the U.S. This exhibition made possible through the courtesy of Bob Ceh.

THE SHORES OF ERIE: Lorraine Moon

The Shores of Erie showcases the fragility of this Southwestern area of Ontario and the migratory route of many butterflies and birds.

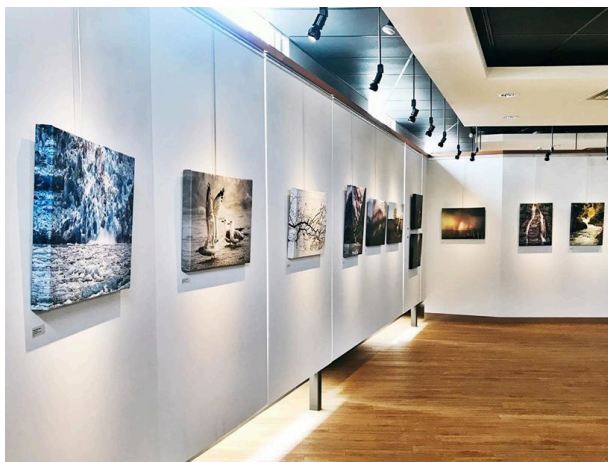
May 30 – June 29

U19: 2019 LAC Members Show & Sale

The 2019 annual members show and sale celebrates the strength, vitality, creativity and wealth of talent found within the Leamington Arts Centre (LAC)/ South Essex Arts Association (SEAA).

LEYDAN: artist group

A collection of various media and subjects by LEYDAN Studios. Featuring in one exhibition space, a group of adult work relating to deserted lands and in another exhibition space, works by young artists.



LIGHT – VISION – EMOTION 2019, Phos3 Photography, 2019



ART ON CULTURE: Curated by Stephen Drouin. 2019

2019 Exhibitions

July 2 – July 28

STORIES FROM THE OLD TESTAMENT: Bryan S. Halls

In this series of twenty paintings there are illustrations of different themes and situations, some that not all would believe are in the bible if not already aware.

LIGHT – VISION – EMOTION 2019: Phos3 Photography

The duo are self taught photographers. They are known internationally, have sold their photography globally and have won a plethora of photo contests.

EXPLORATIONS FROM MY MIND'S EYE: Mike Ondrovic

Each sculpture in Explorations From My Mind's Eye seems to capture a frozen moment. The way in which he echoes these ancient archetypes, often through primitive manipulation of natural materials, is also part of the Folk Art tradition.

July 30 – August 24

ENTER FANTASAGO 3: Jay Raven

There is a Beautiful Chaos that exists within, and beyond, the realm of humanity. It is a dimension as boundless as space, and as timeless as infinity.

THE TRUTH HAS LEGS: Talysha Bujold-Abu

Non-beings and surreal monsters are the embodiment of an indefinable blackness – those that occupy the liminal in-between of mixed heritage. THE TRUTH HAS LEGS is a series of large scale drawings that examine a sense of the-self and a sense of otherness; pattern becoming visual narrative as a method of exploring shifting interpretations of identity.

August 27 – September 21

P*ART*Y: Arlene Murphy & Andrea Mercier

Arlene and Andrea have been creating exceptional artworks together for more than three years now. PARTY celebrates all of us, the art, the fun and the people in our lives! Featured Artists Include: Andrea Mercier, Arlene Murphy, John Dutton, Glen Donaldson.

ARTISTS IN RESIDENCE: Point Pelee National Park

Point Pelee National Park is excited to announce its first artist-in-residence program. The residency took place from June 20, 2019 to June 25, 2019 and provided artists with an opportunity to connect with nature and gain inspiration for their next work(s) of art.

September 24 – October 19

WE COME IN PIECES: Remix Collective

We are a collective of Canadian artists formed because our work is outside of the mainstream art culture and shares elements with Outsider Art. It often has, but isn't limited to having, political or sociological content and it is not influenced by the contemporary art school and MFA aesthetic. Featuring Karine Giboulo, Norman Barney, Laurie Langford, Terry Graff & Claude Bolduc.

HALF CENTURY CLUB: Young at H'Art Art

The Half Century Club Art Group began with a single teacher, inspiring beginners in the 1970s. Faithful to this mission, blossoming artists meet once a week to explore various art mediums, from coloring books to fine art oils. We teach each other.

BREAKING BARRIERS

The Breaking Barriers exhibition's focus is to create an understanding of lived experiences. The exhibition seeks to highlight resilience and resourcefulness in coping with barriers

October 22 – November 16

MEMBER SHOW & SALE: Shooters Photography Club

Have passion for photography? Interested in being involved and gaining some knowledge and experience? See what the Shooters Club members have been up to.

FAR OUT SHOW: group show

This exhibition's focus is to highlight and showcase those offbeat, avant-garde, radical and/or extreme works of art that make us all think outside the box and push the limits of expressionism in contemporary art.

SEVEN ELEMENTS: Nora Harvey

Paintings reflect singular elements, provoking thoughts and feelings as we observe and connect with them. The style is abstract landscape and impressionism with a love of rich and bright colours.

November 19 – December 21

A SIGNATURE CHRISTMAS: Indoor Artist Market

LAC presents its annual indoor Christmas Arts & Crafts show. Featuring artists and artisans in a variety of mediums, and a variety of gifts for everyone on your list.



INCUBATION: 5th Annual Flock Fest, group exhibit. 2019



Community Gallery & Meeting Space

Go With The Flow, Leyla Munteanu, 2019

As a meeting space, the LAC is proud to provide a gathering place for special events and programs. This space is available to individuals, businesses, community groups and organizations for private social events, educational and business events.

The large community room is the perfect setting for educational programs, seminars, workshops, meetings and conferences. It comes equipped with a 100" projector screen, tables, and seating for up to 70. The community room is available all hours any day of the week including weekends.

The Community Gallery & Meeting Space, located on the 2nd floor, doubles as a meeting and exhibition space. In 2019, the meeting space was a very active space, being rented on average 4 to 5 evenings per week and other daytime hours by community groups and businesses such as the uptown Leamington BIA, Windsor Factory Supply, Caldwell First Nation, RBC Bank, Libro Credit Union and others. 2019 was another successful year as Leyla Munteanu, Sophie Hinch, Ina Vu, and Dorit Girash exhibited their work.

January 2 – March 30

CRYSTAL CLEAR: Leyla Munteanu

Munteanu uses specialized acrylic paints poured onto stretched canvas to create vibrant and hyper-colourful original works. As the paints and canvas interacted with gravity to take shape and form, Munteanu goes with the flow...

April 2 – September 21

INCONVENIENT LANDSCAPES : Sophie Hinch & Ina Vu

A two-person show exploring identity and culture in relation to Place.

September 24 – December 21

FOREST & TREES: Dorit Girash

An exploration of the infinitely variable artistry created by the interplay of the sun's energy with air, water and life.



Mill St. Market, May-November 2019

2019 Events & Programs

January



Corks & Canvas: Wine & Paint Night

WELLNESS THROUGH ARTS PROGRAM

Ongoing Through 2019

The Leamington Arts Centre / South Essex Arts Association are proud to announce in partnership with the Leamington District Memorial Hospital the Wellness Through Arts Program. The program's aim is to integrate the creative arts into the healing spaces within the hospital by reducing stress and promoting calming environments.

OPENING RECEPTIONS & AWARDS CEREMONY: JANUARY EXHIBITS

Fri, Jan 11, 7-9pm

MESH: Artist Network Meetings

Creative people, coming together.

Sat Jan 19, 12-1:30pm

Discussion led by: Anna Lamarche from Framing by Anna

Topic: Tips and Tricks for preparing, framing, and adding value to your work.

The Leamington Arts Centre presents free Artist Networking Meetings aimed at supporting the personal and professional development of artists in the Windsor-Essex and Pelee Island Region.

CORKS & CANVAS: Wine & Paint Night

Fri Feb 8, 7pm

Enjoy a paint night at the LAC! Corks and Canvas is an evening to "drink creatively" with your friends or significant other. Generously Sponsored by the Leamington BIA, Aleksander Estate Winery.

OPENING RECEPTIONS: FEBRUARY EXHIBITS

Fri, Feb 15, 7-9pm

February

March

OPENING RECEPTIONS & AWARDS CEREMONY: MARCH EXHIBITS

Wed, Mar 22, 7-9pm

ROMA Screening in Partnership with the Consulate of Mexico in Leamington

Fri March 29, 5pm

On the occasion of the "International Women's Month 2019", the Consulate of Mexico in Leamington gladly invites the whole community to attend the screening of the multi award-winning film "ROMA" by director Alfonso Cuarón.

April

ANNUAL GENERAL MEETING

Wed April 10, 6:30pm

Come to our AGM and learn about all the LAC accomplished in 2018 and get a peak at our plans for 2019 and beyond! Also enjoy networking and gathering with other supporters and arts enthusiasts, plus listen to our guest speaker, Culture & Tourism Officer, Kyra Knapp of the the Municipality of Leamington.

OPENING RECEPTIONS & AWARDS CEREMONY: APRIL EXHIBITS

Thurs, Apr 11, 7-9pm

CRAVE FAMILY GRILL & PUB: FUNDRAISER FOR THE LAC

Mon April 15, 11am – 10pm

Please join us for lunch or dinner at Crave Family Grill & Pub, 26 Erie St. North, Leamington. Let your server know you are there to support us and a portion of your bill will go directly to the SEAA/LAC.



Arts @ The Marina, June 29 & 30 2019

2019 Events & Programs

May



P*ART*Y, September 2019

June

INCUBATION: FLOCK FEST

Fri May 3, 5pm – 9pm

Artist Talk & Panel: Lucas Cabral, Executive Director Artcite Inc.

The Flock Fest is an annual arts event which brings the community together to embrace the arts. The Flock Fest is an exhibition of works representing the journey of creative exploration, connecting and soaring past our personal limits

MILL STREET MARKET

Fri May 3, June 7, July 5, Aug 9, Sept 6, Oct 4 & Sat Nov 30, 4pm – 10pm

The Mill Street Market is the only monthly market in Windsor-Essex County that is specially curated to serve delectable street food while you shop for handcrafted items, vintage clothing, and antiques. Lining the modern, reinvented, Mill Street in Leamington You've never experienced a night market like this!

CORKS & CANVAS: Wine & Paint Night

Fri May 10, 7pm

Enjoy a paint night at the LAC! Corks and Canvas is an evening to "drink creatively" with your friends or significant other. Generously Sponsored by the Leamington BIA, Aleksander Estate Winery.

WHAT IT WORTH? Art Valuation Day

Sat May 18, 9am – 3pm

Have you ever wondered what your prized possessions, antiques, or cherished family heirlooms are worth? Now is your chance to find out! Bring in your treasures to be evaluated by Riches Appraisal & Consult.

OPENING RECEPTIONS: JUNE EXHIBITS

Fri, June 7, 7-9pm

MILL STREET MARKET

Fri June 7, 4pm – 10pm

ARTS @ THE MARINA

Sat June 29 & 30, 10am – 5pm

Bring the whole family out to enjoy a wide variety of artwork and entertainment at Leamington's beautiful waterfront. Dozens of artists displaying unique and creative pieces spread out across the park grounds.

OPENING RECEPTIONS: JULY EXHIBITS

Sat July 5, 7-9pm

MILL STREET MARKET

Fri July 5, 4pm – 10pm

OPENING RECEPTIONS: AUGUST EXHIBITS

Sat Aug 9, 7-9pm

MILL STREET MARKET

Fri Aug 9, 4pm – 10pm



What's It Worth: Art Valuation Day, Julie Riches Appraisals & Consult, May 2019

July

August



Juried Student Art Show, April 2019

2019 Events & Programs

September

OPENING RECEPTIONS: SEPTEMBER EXHIBITS

Fri Sept 6, 7-9pm

MILL STREET MARKET

Fri Sept 6, 4pm – 10pm

HOMETOWN HEROES BANNER RECEPTION

Thur Sept 19, 6pm – 8pm

The Leamington Arts Centre is proud to feature the Leamington Hometown Heroes Banner Project. All the banners will be unveiled in a ceremony later this week and will be on display at the LAC temporarily until they are installed in uptown Leamington.

OPENING RECEPTIONS: OCTOBER EXHIBITS

Fri Oct 4, 7-9pm

MILL STREET MARKET

Fri Oct 4, 4pm – 10pm

CRAVE FAMILY GRILL & PUB: FUNDRAISER FOR THE LAC

Tues Oct 8, 11am – 10pm

Please join us for lunch or dinner at Crave Family Grill & Pub, 26 Erie St. North, Leamington. Let your server know you are there to support us and a portion of your bill will go directly to the SEAA/LAC. We are a not for profit charitable organization reliant on community support. Hope to see you there!

OPENING RECEPTIONS: DECEMBER EXHIBITS

Sat Nov 30, 7-9pm

MILL STREET MARKET

Sat Nov 30, 4pm – 10pm

A SIGNATURE CHRISTMAS:

Indoor artists market

Nov 27 - Dec 22

LAC presents its annual indoor Christmas Arts & Crafts show. Exhibit and sell your work directly inside our beautiful galleries during this month long "gift shop" style exhibition with a warm Christmas setting.

CORKS & CANVAS: Wine & Paint Night

Fri December 13, 6:30pm

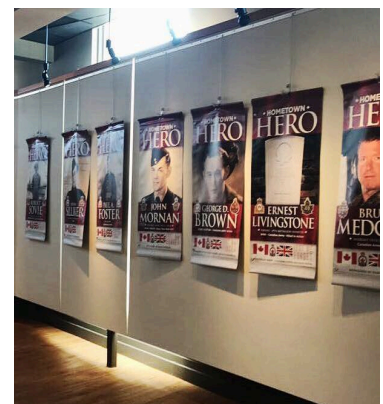
Enjoy a paint night at the LAC! Corks and Canvas is an evening to "drink creatively" with your friends or significant other.



*Opening Receptions March 2019
Music by Joel Westlake*

November

December



Hometown Heroes Banner Project



2019 Events & Programs

Mill St. Market, May-November 2019



Mill St. Market, June 2019

MILL STREET MARKET

May – November 2019, 4pm – 10pm

Leamington's monthly Mill St. Night Market featuring delicious street food, handcrafted items, vintage clothing and antiques, craft beer and cocktails, local wine and music, took place on May 3, June 7, July 5, August 9, September 6, October 4, and November 30, 2019.

The Mill St. Market is the only monthly night market in Windsor-Essex County that is specially curated to serve delicious street food while you shop for handcrafted items and vintage clothing. Lining the modern, reinvented, Mill Street in Leamington, you've never experienced a night market quite like this!

Hosted in partnership with the Leamington Arts Centre and the Municipality of Leamington and with generous support from Tourism Windsor Essex, Leamington BIA, Gabriele BrandSource Chartwell Retirement Residences and Essex Powerlines Corporation.

ARTS @ THE MARINA

Sat June 29 & 30, 10am – 5pm

Bring the whole family out to enjoy a wide variety of artwork and entertainment at Leamington's beautiful waterfront. With dozens of artists displaying unique and creative pieces spread out across the park grounds. Come for a stroll to see new and interesting local and area wide artist works.

Live Music by Chris Osborn, Weimar, Joel Westlake, Steve Morin & Friends, Paul Jones & Friends, Bad Moustache, Doug Biekx, Tim Nolan, and Rick Menard.

Food and drinks by Tasty Treats, Popper's Kettle Corn, Rob's All Fired Up BBQ, Lemonology, Chill Out Frozen Treats, Total Meltdown, Wolfhead Distillery, and Aleksander Estate Winery.


Leamington Arts Centre
Creative. Inspiring. Collaborative.



ARTS
AT THE
MARINA

June 29 & June 30
10am-5pm














EXHIBITOR SPACES STILL AVAILABLE



www.leamingtonartscentre.com

ARTS & CRAFTS SHOW

Admission by Donation

LIVE LOCAL MUSIC - FOOD

90 Robson Rd, Leamington



Education Studios at the Leamington Arts Centre

Education Programs

The LAC strives to help enrich our community's understanding and appreciation for the arts and culture while assisting to enhance skills and talents for both youth and adults. Come join us and explore your artistic side. Develop your skills and have fun in our relaxed lower level studios. Our teachers offer a broad range of adult and children's classes suited to all levels and areas of interest from acrylic, oil, watercolour and encaustic painting, drawing, printmaking as well as specialized individual one on one classes and holiday and seasonal art camps for children.

Ongoing in 2019

Open Studio

Artists of all levels work on their own projects in a supportive and creative learning environment.

January

MESH: Artist Network Meetings

Sat Jan 19, 12-1:30pm

Discussion led by Anna Lamarche from Framing by Anna. Tips and Tricks for preparing, framing, and adding value to your work. The Leamington Arts Centre presents free Artist Networking Meetings aimed at supporting the personal and professional development of artists in the Windsor-Essex and Pelee Island Region.

June & July

Fused Glass Workshops With Astrid Tobin

June 4, June 8, July 6

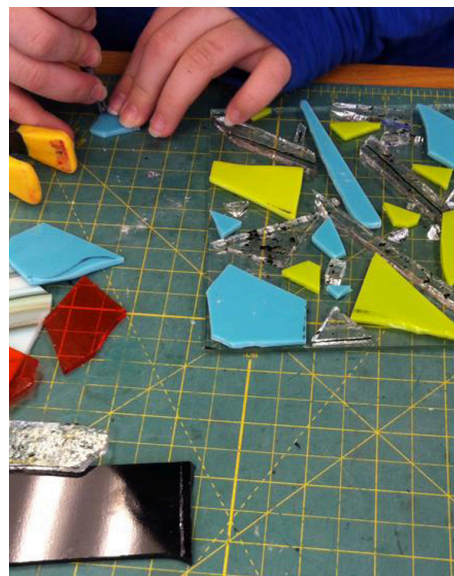
Learn how to use glass-cutting tools and design your own fused glass art. After each class the instructor will fuse your pieces.

October

Acrylic Techniques with Janal Koenig

Saturday, October 5th, 1pm - 5pm

In this introductory class, learn the basics of brush care and use, color harmony and mixing, texture tools, tole painting basics & finishing techniques and mediums.



Fused Glass with Astrid Tobin

2019 Market Place: artist market - café - wine bar

In December 2019, the LAC presented the Market Place, a reinvented gift shop, café and wine bar space featuring artwork exclusively by its members. This unique and one-of-kind space focuses to highlight the originality, quality, craftsmanship and creativity found only in works bearing an artist's signature. The Market Place café and wine bar also highlights our local wineries, breweries and distilleries. A selection of coffee, tea, soda, water, local wines, craft beers and sprits are served daily and during special events. The Market Place is the perfect place to stop in, sit, relax or meet, drink and shop for creative and signature gifts. For special occasions and for yourself, no gift is better than handmade and local. To yourself or to someone special, give the gift of art.

Market Place Exhibitors

Alex Klassen
Anna Lemarche
Astrid Tobin
Biblioasis
Brandy Martin
Brian Sweet
Carolyn Hardy
Chad Riley
Charly Badaoui
Chao Zhao
Chris Basden
Joe & Christina Tagliapietra
Claudette Schiller
Coleen Thibert
Cris Kohl
Darlene Martens
Dave Atkinson
Dave Paddick

Deborah Cameron
Debbie Packer
Dorit Girash
Eric Naylor
Friends of Point Pelee
Gerry Hucko
Harold Burton
Irina Teske
Irena Vucajnk
Janal Koenig
Jim McTavish
Jim Oglivie
Jim Stein
Justin Latam
Karen Ross
Karen Scott
Kathryn Parent
Ken Friesen

Kristyn Dunnion
Kathy Klym
Laurie Langford
Layne & Elaine Van Loo
Leyla Munteanu
Louise Vermeiren
Linda Bertrand
Lynda Ruddock Rousseau
Maeve Omstead Johnston
Marg Ross
Mary Kendrick
Mary Newland
Michelle DeLacey Bruner
Michelle Dobrin
Nelcy Martinez
Patti Wheeler
Pelee Music
Peter Olsen

Petroglyph Soaps
Renee Helling-Laur
Ron Vermeiren
Rosalind Knight
Ryan Horvath
Sandi Collins
Sandie Gunning
Sarah Rupert
Sherrie Piens
Susan Dupont Baptista
Susan Weekes
Terry Dolle
Todd & Sherry Stahl
Todd MacVicar
Tom Omstead
Vesna Bailey
Vicki McKay





Art Supply Store



Since 2016 the LAC has been carrying a variety of art supplies to support local artists! Name brands such as Golden, Amsterdam, Lukas, Prismacolor, Canson, Micron, Finetec, Prismacolor, Koi, and more. We carry everything from acrylic paints, oil paints, canvases, palettes, palette knives, watercolour paints, watercolour pencils, watercolour paper, frames, gesso, coloured pencils, graphite pencils, pen & ink, fixatives, clay, sketch pads & paper and printmaking supplies! Plus, we take special orders for artists and members.

The LAC strives to offer quality products at competitive prices. To support local artists and encourage creativity, LAC Members Get 10% OFF ALL Art Supplies.



2019 ART SUPPLY SALES

The Leamington Arts Centre held two Art Supply Sales in 2019.

July 2019

For the month of July we held a *Summer Inventory Sale* on our art supplies! We offered 10% off with no tax on all in stock supplies and an additional 10% off to our members for a total of up to 33% off in savings.

December 2019

Art supplies make great Holiday gifts! We offered the community 15% off all in-stock art supplies. Members received an additional 10% off.



Permanent Collections

The Henry Collection, the Municipality of Leamington, 2019

The Henry Collection: Historic Art & Artifacts

The Henry Collection, donated by the Henry Family, is a permanent collection of the Municipality of Leamington and is under the care of the Leamington Arts Centre. The Collection features various art and artifacts collected from all over the globe including works from far East Asia and North America.



Harold Town
Side Light, 1956
Single Autographic Print

LAC Collection: Local and Culturally Significant Artwork

The SEAA/LAC's collection is of great pride amongst its staff, members, and constituents. We take seriously our mission to enrich culture through the collection and preservation of art. Since its founding in 1971, the SEAA/LAC has acquired hundreds of works of art, collecting in the areas of Canadian and international historical and contemporary art.

The collection has been built both through donated gifts and considered purchases. Approximately 90% of gallery acquisitions come from private donors—often dedicated collectors looking for a permanent home for their works where they will be appreciated, cared for, and put on display for others to enjoy. Artists also donate their work, such as Jeet Aulakh's *Namo Ek Yoge*; 2010 oil on canvas. It is because of the generosity of these donors that the SEAA/LAC enjoys the position it holds as a collecting institution.

Notable New Acquisitions: LAC Permanent Collection



Alpine Skiing Landscape, 1998
Ian Baxter&
Mixed Media/Monoprint

Iain Baxter& is recognized as Canada's pioneering conceptual artist. For over forty years, Baxter& has continually produced works that question the role of art as commodity and as a medium for cultural commentary. Among his many innovations, Baxter& was the first artist to adopt a corporate persona: in 1966, he formed the N.E. Thing Company. NETCO's output ranged from conceptual, satirical, vacuum-formed still lifes to post-modern appropriations of famous artworks. His recent work includes neon signs, animal preserves, a grocery cart of GMO's and installations using obsolete technology.

He has received numerous awards including a Governor General's Award in Visual and Media Arts in 2004. He was named an Officer of the Order of Canada in 2003 and a Companion of the Order of Canada in 2019. Baxter& is also a Professor Emeritus at the School of Visual Arts at the University of Windsor. Acquired through careful selection from the Lions Gallery in Miami, FL.



Zingara, 1994
Adele Duck
Acrylic and oil on 100% rag paper

Adèle Duck's practice is informed by her mastery of diverse media and processes including printmaking, drawing and painting, as well as the conventions of both abstract and figurative art. Each work is a fascinating combination: of marks both painterly and direct; flowing washes and glazes layered over defined shapes; and deep fields of saturated colour shot through by sharp, kinetic black and white stripes. Translucent "skins" of pigment recede, offering indefinite glimpses of the body. All these elements converge to create a wondrous effect that is magnified in Duck's recent large-scale canvases.

Duck's compositions are pure, unfiltered communications, inviting a sort of play between the work and viewer. The evident effort and sheer amount of visual information in her works provoke appreciation of her ability, and invites individual interpretation of symbolic elements. The complexity of Duck's imagery never offers final or obvious readings. Duck's work can be found in various collections across Canada and beyond.

The Leamington Arts Centre would like to thank Carolyn Rourke for her generous donation of Lucy 3/20, 1991 & Zingara, 1994.

SOURCES

"IAIN BAXTER&: Works 1958-2011." *Art Gallery of Ontario*, 2012, ago.ca/exhibitions/iain-baxter-works-1958-2011.
"Adèle Duck: January 30 – May 9, 2010." *Art Gallery of Windsor*, 2010, www.agw.ca/exhibition/32.

New Acquisitions: LAC Permanent Collection

Chequered Flag Raceway 287/650

Ron Suchiu

Colour Print on Paper

Gift of Carol Bell, Leamington, ON

The Skyway Drive In 128/650

Ron Suchiu

Colour Print on Paper

Gift of Carol Bell, Leamington, ON

Cruising 65' 38/650

Ron Suchiu

Colour Print on Paper

Gift of Carol Bell, Leamington, ON

Spitfire

AF Clark Barrie

Colour Print on Paper

Gift of Carol Bell, Leamington, ON

Confrontation at Beachy Head 494/1000

S. Phillips William

Colour Print on Paper

Gift of Carol Bell, Leamington, ON

Blue Jays 110/450

Diane McConell

Colour Print on Paper

Gift of Carol Bell, Leamington, ON

Up and Away 9/300

Harold Burton

Colour Print on Paper

Gift of Mrs McRae, Leamington, ON

At Gramma's 9/300

Harold Burton

Colour Print on Paper

Gift of Mrs McRae, Leamington, ON

Peaceful Mornings 332/350

Harold Burton

Colour Print on Paper

Gift of Mrs McRae, Leamington, ON

Spring Time Blue Jays 389/2850

Renato Muccillo

Colour Print on Paper

Gift of Mrs McRae, Leamington, ON

Untitled Squirrel Wildlife Scene, 1982

Gerda Neubacher

Colour Print on Paper

Gift of Mrs. J.Martin, Leamington, ON

Lucy 3/20, 1991

Adele Duck

Intaglio Print

Gift of Carolyne Rourke, Windsor, ON

Figures In Snow II, 1979

John Kinnear

Water Colour

Gift of Joseph Couillard, Leamington ON

Lighthouse and Boat, 1982

Harold Burton

Acrylic on Canvas

SEAA/LAC Purchase

Snowy Barn

Harold Burton

Acrylic on Canvas

SEAA/LAC Purchase

Heartthrob, 1975

Graydon Dyck

Pencil on Board

Gift of Carol Muirhead, Courtenay, BC

10 Original Works by Graydon Dyck

Pencil on Paper

Gift of Bob Ceh



Confrontation at Beachy Head, S. Phillips William
Gift of Carol Bell, Leamington, ON



Figures In Snow II, 1979, John Kinnear
Gift of Joseph Couillard, Leamington ON

Accolades & Professional Services



The Best of Windsor Essex Awards

The Best of Windsor Essex Awards are a social media campaign organized by Tourism Windsor Essex Pelee Island in an effort to learn from locals where they want to dine, shop, play and stay. We recognize where locals like to go, so do visitors. This campaign is designed to highlight some of the best of our region and share it with the close to 5 million tourists who visit our region annually.

Once again in 2019, the Leamington Arts Centre was nominated in two categories for the Tourism Windsor Essex Pelee Island's 4th Annual BEST OF WINDSOR ESSEX awards.

The LAC was a finalist for the ARTS & ENTERTAINMENT – BEST ART GALLERY OR ART SPACE award. The other nominees were: the Art Gallery of Windsor (winner), Merlis' Eatery & Beverage House, the Gibson Gallery, and Chiaroscuro Artists' Showroom. We were also nominated for BEST LOCAL ART FESTIVAL with Arts @ the Marina alongside Art in the Park (winner), Windsor International Film Festival, Walkerville Art Walk and Art by The River.

Chad Riley

Activities & Boards

LAC Director/Curator Chad Riley served his 3rd year of volunteer service as Board Member for the Uptown Leamington BIA. The Uptown Leamington Business Improvement Area (BIA) represents over 200 businesses in the Uptown area. The BIA's role is to develop the uptown core through beautification, general improvements and upgrades, promotion, events and marketing.

Leamington Loves Reading Art Contest

Chad Riley served as judge along with Mayor Hilda MacDonald. Youth up to age 17 entered their own original artwork depicting what they love about their favorite book and why they love reading so much. The artwork later to be displayed at the Leamington Library for the months of June and July.

International Society of Appraisers (ISA)

Chad is also a member of the International Society of Appraisers (ISA) and provides appraisal consultations and services to Windsor and Essex County. He recently completed the Uniform Standard of Professional Appraisal Practice (USPAP), a course designed to recognize ethical and performance standards for the appraisal profession.

Sophie Hinch

Activities & Residencies

Programming & Curatorial Assistant Sophie Hinch is involved in the francophone Arts community as Artist in Residence for the Conseil Scolaire Catholique Providence. She travels across Southwestern Ontario delivering specialized art workshops in French language elementary schools. She also gives monthly Arts & Culture updates as a correspondent for CBC/Radio-Canada CBEF. Sophie joined the Board of Directors at Artcite Inc. as secretary. Artcite is a contemporary artist-run gallery in downtown Windsor.

Vanguard Youth Arts Collective

Sophie completed her third year as president of the Vanguard Youth Arts Collective, a group of young creatives which advocates for the arts, promotes inclusiveness, and fosters connections in their communities. Vanguard hosted a series of workshops to local youth groups as part of their 100 Journals Project Initiative. They were also the winners of the *RBC Future Launch Community Challenge Grant* for the municipality of Leamington. Vanguard hosted Mess Fest, a week of activities and community projects. Activities included smartphone photography workshops, sewing classes, drag performances, and paint night. To finish the year, they held two group exhibits at the ArtSpeak Gallery and N9A Studio.



International Society of Appraisers



Chad Riley, Director/Curator is one of approximately 45 appraisers in Canada. As such, the LAC offers a variety of fine art appraisal services for various functions and all our appraisal reports follow International Society of Appraisers (ISA) standards for appraisal writing practice as well as USPAP 2018-19. If you require a formal written appraisal report for insurance or a donation, you are in the right place! The International Society of Appraisers (ISA) is the largest of the professional personal property appraisal associations representing the most highly trained and rigorously tested independent appraisers in the United States and Canada.

Appraisal Services Offered

Written appraisal reports for charitable donations + acquisitions, insurance coverage + claims, resale + liquidation, identifying most suitable markets for resale of fine art, as well as description, identification and arranging authenticity when required.

Types of Property Appraised

Fine art such as paintings, lithographs, drawings, photographs, sculpture.

Types of Property Generally Not Appraised

Entire estates, antiques, jewellery, silver, furniture, china, ceramics, figurines, rugs, baskets, Asian and European items, real estate or business valuations.

About the ISA

The International Society of Appraisers (ISA) is the largest of the professional personal property appraisal associations representing the most highly trained and rigorously tested independent appraisers in the United States and Canada. We are a not-for-profit, member-driven association, formed to support our member needs and to enhance public trust by producing qualified and ethical appraisers who are recognized authorities in personal property appraising.

ISA's membership is diverse and collegial. Our members include many of the country's most respected appraisers, consultants, curators, scholars, gallerists, estate liquidators, auctioneers, and dealers. We pride ourselves on a strong national network of appraisers who draw on highly specialized knowledge, skill, and experience, serving as a resource to our fellow members in a spirit which is unparalleled. Personal property appraising is an evolving profession and the ISA courses continue to advance, reflecting the most sophisticated knowledge and technology available. Additional courses are in the process of development, including a state-of-the-art, comprehensive online learning platform.



Training & Development



Smart Serve & Food Handlers Course

To ensure patrons receive safe and quality service, LAC staff, Chad Riley and Sophie Hinch, completed both of their in-class Smart Serve and Food Handlers Certifications.

The Smart Serve Responsible Alcohol Beverage Sales & Service Training Program is approved by the Alcohol and Gaming Commission of Ontario (AGCO) as the only responsible alcohol training program for Ontario. Smart Serve is a dedicated advocate for a safer and healthier Ontario. It is required by law to sell or serve alcohol in Ontario. This program is designed for servers, bartenders, hostesses, food and beverage managers, or anyone who is involved in an event where alcohol is served.

The Food Handlers Course offered by the Windsor-Essex County Health Unit teaches you how to keep food as safe as possible in order to protect your community. LAC staff completed the in-class Food Handlers Course and in-class Exam in November 2019.

Uniform Standards of Professional Appraisal Practice (USPAP) 2018-2019

Chad Riley completed the seven-hour, mandatory USPAP course, required for all ISA appraisers. The Uniform Standards of Professional Appraisal Practice (USPAP) are the generally recognized ethical and performance standards for the appraisal profession in the United States. USPAP was adopted by Congress in 1989, and contains standards for all types of appraisal services, including real estate, personal property, business and mass appraisal. Compliance is required for state-licensed and state-certified appraisers involved in federally-related real estate transactions. USPAP is updated every two years so that appraisers have the information they need to deliver unbiased and thoughtful opinions of value.



Visitor Statistics

Art galleries are commonly one of the main tourism destinations for communities and the LAC is no different for Leamington. As visitor tracking reports the LAC is a major destination and when visitors are in town they also frequent other establishments and generate economic development.

Over 10,220 visitors from Windsor and Essex County and surrounding regions visited the Leamington Arts Centre in 2019.



4.6/5 Rating on Facebook
2428 Followers on Facebook



4.7/5 Star Rating on Google



1082 Followers on Instagram



390 Mailchimp Subscribers

"I always enjoy my visits the gallery. There is a nice variety of pieces , lots of interesting things going on and the staff has always been friendly and helpful."

- Joel Westlake

"This is a great facility to promote art and crafts. Even though I don't live in Leamington I will be visiting often since my sister in law has recently moved here. I became a member and now have my wire art in their lovely gift shop. Leamington should be proud to have such a nice Arts Centre!"

- Patti Wheeler

"Great showcase for culture and the arts in Leamington!"

- Alberto Bernal

"An incredible gift shop filled with local art work, books, cards and more. Excellent exhibits, and a beautiful rental space. We had our baby shower here, and it was perfect!"

- Katie Omstead

"The staff are friendly, knowledgeable and helpful. The layout and set up is very professional and welcoming. The events are consecutively scheduled and never boring. I love going and seeing/learning from the staff and other artists."

- Kellyz Kraftyz



Venue Rentals

The LAC is proud to provide a gathering place for the community's programming needs and special events. Our space is available to individuals, businesses, community groups and organizations for private social events such as baby showers, bridal showers, wedding ceremonies, book launches, meetings, educational and business events, and more.

In 2019, the LAC was host to over 200 private, corporate, and public venue rentals.

The beautiful main floor galleries offer large spaces for entertaining and socializing with plenty of room for hors d'oeuvres and cocktail tables, buffets, receiving tables, or seated catered dining. It's the perfect unique setting for showers, weddings, anniversaries, book launches, CD releases and more. The galleries are available for facility rentals after 5pm any day of the week including weekends. **some exceptions may apply.*

The large 2nd floor community room is the perfect setting for educational programs, seminars, workshops, meetings and conferences. It comes equipped with a 100" projector screen, tables, and seating for up to 70. The community room is available all hours any day of the week, including weekends.

The lower level studio space is a great space to get messy with paints, crafts and hands-on work. Studio space is available monthly for artists and arts instructors to hold classes and workshops. It is equipped with its own clean up station, tables, chairs and washroom. It is available all hours any day of the week including weekends.





Venue Rentals

In addition to exhibition space in our galleries, the LAC also offers office space, meeting room space as well as workshop and studio space, plus, it's fully accessible! In 2019, several local business made use of the LAC. Revenues from facility rentals aid in offsetting operating costs so more funds can be used for programing and events. The LAC truly is a building for the community.

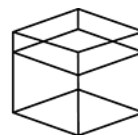
In 2019, some of these businesses and organizations included: Windsor Factory Supply, the Uptown Leamington BIA, The Branding Loft, Transport Training Centres of Canada, the Church of Christ, Caldwell First Nation, RBC Bank, Libro Credit Union, and Canterbury Elder College.

Resident Businesses



ALBUQUERQUE
ACCOUNTING

New office located in downtown Leamington. Book an appointment today, call 519-995-0057 .



THE BRANDING LOFT

An active imagination and lifestyle combined with an entrepreneurial drive.
amy@brandingloft.com



FIT NUTRITION CANADA
HOLISTIC HEALTH & WELLNESS

Providing professional advice to help you reach and maintain your health and nutrition goals.
karly@fitnutritioncanada.com



Providing legal advice in both English & Spanish.
Call 519-326-4878 for more information.

Statement of Revenues & Expenditures

Report to the Members

The accompanying financial statements of the South Essex Arts Association which comprise the statements of the financial position as of December 31, 2019 have been externally reviewed by Albuquerque Accounting.

Board of Director's and Treasurer's Responsibility for the Financial Statements

The SEAA Treasurer and LAC Director are responsible for the preparation and fair presentation of these financial statements as approved by the Board of Directors in accordance with Canadian accounting standards for not-for-profit organizations, as shown herein and prepared by Albuquerque Accounting.

Opinion

In the Board's opinion, the financial statements present fairly, in all material respects, the financial position of the South Essex Arts Association as at December 31, 2019 and the results of its operations and its cash flows for the year ended December 31, 2019 and in accordance with Canadian accounting standards for not-for-profit organizations.



72 Talbot Street West
Leamington, Ontario N8H 1M4
Telephone: 519-995-0057
E-mail: katherine@albuquerqueaccounting.ca

NOTICE TO READER

On the basis of information provided by management and documented by myself, I have compiled the balance sheet and income statement of South Essex Arts Association as at December 31, 2019.

I have not performed an audit or a review engagement in respect of these financial statements and, accordingly, I express no assurance thereon.

Readers are cautioned that these statements may not be appropriate for their purposes.

Albuquerque Accounting

Katherine Albuquerque

Certified Professional Bookkeeper

Leamington, Ontario
March 6, 2020

South Essex Arts Association

Balance Sheet as at December 31, 2019 (Unaudited)

| | 2019 | 2018 |
|--------------------------------|------------------|------------------|
| Assets | | |
| Cash | \$ 6,462 | \$ 18,361 |
| Accounts Receivables | 3,560 | 0 |
| Restricted Funds (Investments) | 21,995 | 20,847 |
| | \$ 32,017 | \$ 39,208 |

South Essex Arts Association

Income Statement as at December 31, 2019 (Unaudited)

| | 2019 | 2018 |
|---------------------------------|-------------------|-------------------|
| Revenue | | |
| Granting Agencies | \$ 54,458 | \$ 48,725 |
| Programs & Exhibits | 45,688 | 25,916 |
| Market Place & Art Supply Sales | 8,015 | 5,518 |
| Investment Income | 2,024 | 406 |
| Public Support (Note 2) | 72,031 | 73,190 |
| Facility Rental | 22,868 | 20,585 |
| Other Revenue | 6,088 | 3,552 |
| Total Revenue | \$ 211,172 | \$ 177,892 |
| Expenses | | |
| Market Place & Art Supply Store | \$ 8,701 | \$ 6,697 |
| Programs & Exhibits | 15,812 | 6,651 |
| Development | 5,665 | 70,825 |
| Building, Facility & Occupancy | 26,216 | 21,374 |
| Education & Public Programs | 5,864 | 5,152 |
| Business & Administration | 94,714 | 71,158 |
| Professional Fees | 3,108 | 1,025 |
| Total Expenses | \$ 160,080 | \$ 182,882 |
| Net Income | \$ 51,092 | \$ (4,990) |

South Essex Arts Association
Notes to Financial Statements
for year ending December 31, 2019
(Unaudited)

1. Incorporation

The company is incorporated without share capital under the laws of the Province of Ontario.

2. Financial Statements

Financial statements have been modified for 2019 in an effort to represent data in accordance to others in the industry.

3. Public Support

Public support includes \$62,042 in donations in kind, these are entered into the income statement in year of donation.

4. Permanent Collection

Sixteen pieces of art totaling \$47,400 were donated during the year and two pieces totaling \$1107 were purchased. Permanent collection increases by \$48,507 in 2019 with 18 pieces added.



Your Interest and Support in the *South Essex Arts Association* helps build a richer and brighter community. Thank you!



The LAC is a proud member of the OAAG offering reciprocal benefits to over 80 institutions. www.oaag.org.



The LAC is a member of Volunteer Canada and has adopted their code and we are committed to demonstrating our value in volunteerism.



The LAC is a not-for-profit organization reliant on community support.



The SEAA/ LAC recognizes the generous support of the Municipality of Leamington and the Southpoint Sun.

Cover Images: Hometown Heroes Banner Reception, September 19, 2019
Mill St. Market, June 2019

Leamington Arts Centre | 72 Talbot Street West Leamington, ON N8H 1M4
519.326.2711 info@leamingtonartscentre.com