



# The South Essex Arts Association

## Annual Report 2018



# Table of Contents

1

About the SEAA  
About the LAC  
Mission Statement  
Values & Vision Statement

2

Message from the Chair

3

Message from the Director

7

Board of Directors,  
Staff & Volunteers

9

Gallery Assistant & Secondary  
Student Co-op Placement

10

Summer Student Program

11

Donors, Sponsors,  
Members & Supporters

13

Corporate Sponsors & Partners

14

Exhibitions, Events & Programs



21

Gift Shop & Art Supplies

22

Permanent Collection

23

2018 Acquisitions

29

Accolades & Professional Services

31

Education Programs

33

Facility Rentals

35

Statement of Revenues & Expenditures

## ABOUT THE SEAA

The South Essex Arts Association the governing body for the Leamington Arts Centre. The SEAA is a not for profit charitable organization established in 1971 dedicated to creating, sustaining and celebrating the arts.

*Registered Charitable Not For Profit Organization No. 11915 7543 RR 0001*

---

## ABOUT THE LAC

The Leamington Arts Centre (LAC) is located in the heart of South Western Ontario's beautiful uptown Leamington in one of the town's many wonderful heritage buildings.

The LAC is a state of the art gallery which offers three exhibition spaces with over 400 linear feet of continuous wall space and 3000 square feet of floor space, as well as a gift shop, art classes, workshops and meeting spaces. The LAC is one of the area's paramount places to view modern art with an emphasis on local and aspiring artists and artisans.

---

## MISSION STATEMENT

The South Essex Arts Association is dedicated to creating and sustaining a celebration of the human spirit through the nurturing of the arts within our community.

---

## VALUES & VISION STATEMENT

The South Essex Arts Association, in partnership with the various art mediums and other disciplines within the arts culture, promotes, fosters and stimulates the appreciation of the arts. Through artistic events and exhibitions with a special focus on the work of local artisans, SEAA assists in preserving all forms of art within the community.

# Message from the Chair



One of the great pleasures of any organization has to be working with people with the same ideals as you.

And that is the case with the Leamington Art Centre. Each meeting I come out to I realize that the board members are all working to a single goal – the promotion of art in the South Essex area. The present members of the board are some of the best I have ever worked with.

To say that 2018 was a successful year for the LAC is really an understatement. We are growing with every new endeavor.

Just over a year ago the LAC board was informed about the planned improvements in the uptown area of Mill St. West, and working through and with the municipality numerous revisions were made to better accommodate the needs of the gallery. More changes are yet to come.

To aid our fund raising capabilities the LAC spent much time and money to have the building licensed under the LCBO.

Our major fund-raiser, Arts at the Marina, suffered in two ways in 2018, but it remains one of the LAC's feature events. Our income dipped and of course we all remember the fish flies and the reconstruction of Erie St. South during that weekend.

Those are highlights and don't represent so many of the other activities the LAC hosts – corks and canvas, children's art programs, summer, science programs, new web page, etc.

As well, our director, Chad Riley continues to garner notability with people, who are donating more art work and money to the benefit of the LAC. Of course, Chad continues to be the spearhead for growth and activities with an unrelenting drive for culture. I certainly applaud his effort.

For me, a major surprise came later in the year when Chad unveiled a survey of comparison with other art galleries in southwestern Ontario. Really, the comparison was shocking as it showed how much the Leamington Art Centre provides to the community with so little help. Hopefully that will be rectified in the coming months. Again, thanks to you, the board of directors, other volunteers and Chad.

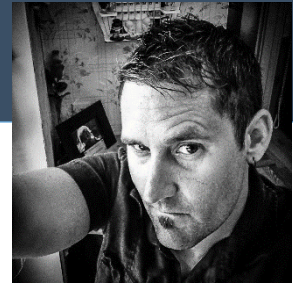
Best,

Mike Thibodeau

Chair, South Essex Arts Association



# Message from the Director



*"Every child is an artist. The problem is how to remain an artist once we grow up."* Pablo Picasso

2018 was another tremendous year for the LAC, illustrated by continued growth and persistent upward momentum in all areas of its activities. The board and administration remain committed and focused on the growth of the organization for the betterment of the community, and the community in turn has shown its support with strong engagement and participation in activities and events. Recognized for its growth and accomplishments across the Southern Ontario Region the LAC was contacted to join the *Ontario Regional Art Galleries* representing 14 of the finest community galleries from across Ontario, including the Woodstock Art Gallery, Peterborough Art Gallery, the Judith and Norman Alix Art Gallery in Sarnia and others. A detailed comparative summary report was prepared representing all areas of activities for these galleries, from facility square footage, annual budget, number of exhibits, education programs, events, permanent collection, number of staff, municipal support, grants and more. I am extremely pleased to report that the LAC ranked amongst the highest in all areas relating to the number and the scope of community activities and programs. Recognized again, the LAC was a finalist for the 3rd year in a row for Best Art Gallery in the Tourism Windsor-Essex Pelee Island's *Best of Windsor-Essex* annual awards.

## **Exhibits & Events**

The exhibition season was complete with 37 different exhibits in total from January 2 through December 22. These exhibits included 16 solo exhibits, 14 open call exhibits and 7 other exhibits such as the permanent collection. The exhibits featured in the range of 1000 works from all over Windsor, Essex and Chatham-Kent Counties.

Once again, one of the more notable community exhibitions for year was the, *20th Annual Juried Student Art Show*. This exhibit filled all three of the exhibition spaces with 200 works by 143 students, from 9 Secondary Schools thanks again to the participation and interest of local student artists, their devoted teachers and parents and through the sponsorship of the Rotary Club of Leamington and the Kiwanis Club.

The LAC also proudly partnered with the Point Pelee National Park to organize an exhibit to celebrate their 100th anniversary. With three themes, Conservation, Community and Looking to the Future for different age groups from grade 1 through grade 12 the exhibit drew in 110 works from 9 different schools all over Windsor-Essex and Chatham-Kent Counties.

The highly regarded *Anything's Possible Amateur Photo Contest* set a record in 2018 with 253 entries from 76 participants. Thanks to our generous sponsors Speedprint, who offered printing and canvas wrap gift certificate prizes and Framing by Anna who meticulously completed the matting once again and donated a custom framing gift certificate to the People's Choice winner.

## **Exhibits & Events**

The exhibition season was complete with 37 different exhibits in total from January 2 through December 22. These exhibits included 16 solo exhibits, 14 open call exhibits and 7 other exhibits such as the permanent collection. The exhibits featured in the range of 1000 works from all over Windsor, Essex and Chatham-Kent Counties.

Once again, one of the more notable community exhibitions for year was the, *20th Annual Juried Student Art Show*. This exhibit filled all three of the exhibition spaces with 200 works by 143 students, from 9 Secondary Schools thanks again to the participation and interest of local student artists, their devoted teachers and parents and through the sponsorship of the Rotary Club of Leamington and the Kiwanis Club.

The LAC also proudly partnered with the Point Pelee National Park to organize an exhibit to celebrate their 100th anniversary. With three themes, Conservation, Community and Looking to the Future for different age groups from grade 1 through grade 12 the exhibit drew in 110 works from 9 different schools all over Windsor-Essex and Chatham-Kent Counties.

The highly regarded *Anything's Possible Amateur Photo Contest* set a record in 2018 with 253 entries from 76 participants. Thanks to our generous sponsors Speedprint, who offered printing and canvas wrap gift certificate prizes and Framing by Anna who meticulously completed the matting once again and donated a custom framing gift certificate to the People's Choice winner.

The principal fundraiser and event, *Arts @ the Marina* saw decreased revenue due the Erie Street road closure just a couple days before the event, record heat and the late arrival of the fish flies which covered the park keeping visitors away. Plans have been put into place to revamp the event for 2019 based on visitor and exhibitor feedback. Additionally, the dwindling *March Masquerade* event was cancelled for 2019 to focus more efforts on *Arts @ the Marina*. Watch for many new changes and an enhanced event for 2019.

The *Art in the Parkette* from 2012 was revitalized for 2018 with the support of the Tourism and Culture Department of the Municipality. The event was a great success with additional support from the Uptown BIA and the Bank Theatre. Visitor turn out and feedback was overwhelming resulting in a *Holiday Night Market* the Municipal Building in conjunction with the Christmas Parade. With the great success of these events, 2019 will surely see their return and growth.

Other great events such as the *Corks & Canvas* wine and paint nights continued with the support of the Uptown BIA. Themes included Picasso, VanGogh and Group of Seven. A *Signature Christmas* indoor artist market featured 14 artisan booths, which lined the entire main floor of the LAC and attracted shoppers from all over the region.

### **Grants & Fundraising**

A community grant from the Municipality of Leamington as always contributed significantly to our overall success in 2018. The grant aids to offset facility and maintenance expenses allowing greater funds to be allocated to programing and community events.

Funding from Jobs Canada was once again received, although cut back significantly from 2 positions at 12 weeks to only 1 position for 8 weeks. Eric Kirwin was re-hired to fill the position from July through the end of August and staff hours disbursed, which also enable the LAC to be open to the public 11 additional hours per week, including Sundays.

The LAC also received a security camera grant from the Uptown BIA to add addition surveillance cameras on premise, keeping our facility and uptown safe for our patrons.

Other annual fundraising initiatives including the President's Appeal, A1 Chinese Restaurant Fundraiser, Gilligan's Neighbourhood Grill Fundraiser all continued and were profitable.

## **Donors, Members, Volunteers & Supporters**

It is by way of the generous support from donors, members, volunteers and supporters that the LAC continues to grow and evolve. Support by way of individual and corporate membership was incredibly strong in 2018 with over \$66,000 in in-kind donations and nearly \$10,000 in monetary donations by supporters.

As members of Volunteer Canada the LAC adopted their code of ethics with LAC volunteer program developed in 2017. The program was launched in 2018 and volunteers Gerry Thibodeau, Sally LaPla and Chao Zhao each have contributed over 100 hours of regular volunteer service in the areas of Docent + Administrative Assistant and Facilities + Events Assistant. These dedicated volunteers have significantly aided to the growth of the LAC through their support of the administrative staff. Joel Westlake, member, volunteer musician made an unconventional yet valuable donation of two Prospector canoes, which were sold for \$2200, and the profits retained by the LAC. Dennis and Diane Riley also donated a washing machine and dryer to be installed and used to clean soiled linen after events and facility rentals. And the BIA donated \$1000 to purchase a refrigerator to better host uptown community events at the LAC.

John and Patricia Haynes, longtime members, again in 2018 presented the SEAA/LAC with two works of art for the collection, a Camrose Ducote and a John Saarniit painting. Douglas Bedard also gifted a work by Canadian artist, Frere Jerome Paradis.

Tony Paginton and Roswita Busskamp donated the single highest donation on record to the LAC. Nine works by Canadian artist George Paginton with an appraised value of \$33,000 were gifted to the permanent collection. An exhibition of these works has featured in June. Paginton was a notable artist working with the Group of Seven.

The SEAA/LAC volunteer Board of Directors saw a change within its executive positions with Mary Jane Nohra stepping down as Chair and Mike Thibodeau taking her place. Treasurer Penny Belluz announced that after nearly a decade of bookkeeping services for the SEAA/LAC that she will relinquish the bookkeeping the end of 2018, in part due to the significant growth of the organization and scale of the accounting required. Financial duties will be distributed between a hired bookkeeper and myself.

The LAC also welcomed Mackenzie Dyck from Leamington District Secondary School as a volunteer co-op placement student from September 2018 through January 2019.

And I would especially like to acknowledge and thank our dedicated, reliable and efficient Gallery Assistant, Sophie Hinch. Her commitment to the LAC and her administrative support has aided significantly to bringing the LAC to the heights it is at today and her efforts have not gone unnoticed.

## **Education & Learning**

The lower level education studio saw a mini-makeover the past year with a clean up of old furniture, a fresh coat of paint and additional LED light fixtures added in preparation for new programs.

The LAC welcomed Astrid Tobin and Sally LaPla who developed March Break camps for kids, adult mosaic classes, art journaling and the open studio days where artists can drop in, network, share, collaborate on work through peer mentoring.

Mad Science also featured two series of all day workshops over the summer months for youth and Nikiki Scaddan also continued her summer French camp programs as done at the LAC the past many years.

The LAC rolled out a new education program in 2018, *MESH: artist network meetings*, held on a select Saturday afternoon with a lead speaker on various art topics. Jacquie Jacobs & Sylvia Whitton, Toronto based artists lead the discussion in August on An Investigation of Time and Space Through Art and Vanguard: Windsor-Essex Youth Arts Collective discussed Community and Youth Engagement in January. The new series was well received by the arts community.

## Facility

After some creative reworking of the spaces late in 2017 after the end of the Erie Quest Ship Wreck Museum, the LAC is proudly opened up the renovated space to feature a new exhibition space as well as a larger community meeting space. The space featured four three month long exhibits and hosted meetings, workshops, education programs for a tremendous number of groups, from the BIA, the Chamber of Commerce, Elder College, private groups and the LAC's own programs. The space resulted in a great investment and new revenue source to account for the loss of the Erie Quest income.

The reception area and gift shop also had a small renovation, cutting down and rearranging the desk area to allow for greater floor space and passage of visitors at receptions and times of high traffic. To make up for the loss of workspace and to create a more private meeting space, an LAC administrative office was created on the second floor by combining the permanent collection into one room.

To better host facility rentals such as showers, weddings and its own events, the LAC applied for and successfully obtained its permanent alcohol license with the Alcohol Gaming Commission of Ontario. Administration and two volunteers obtained their smart serve and the LAC is now licensed to sell and serve alcohol in its premise on a regular basis to enhance programs and create a new revenue stream.

The LAC said farewell to Cowlick Studio and Mark Caza Photography, but welcomed new tenants Albuquerque Accounting and the Branding Loft to the second floor.

## In Summary

The LAC had an extraordinary and packed year complete with growth, vitality and strength in programing. Approaching nearly 50 years the organization continues to evolved and grow with the community and has remained a bright spot for our uptown that attracts tourist and residents seeking an active arts community and hub such as the LAC.

With the reinvention of the Uptown, the exterior construction around the LAC and all down Mill street, the stage is being set for further growth and excellence and the LAC is thrilled to be in the centre of it all.

It is with great thanks to all LAC friends for your support and patronage that I am pleased to present the 2018 Annual Report and all we have accomplished together.



Chad Riley, MFA, ISA

Director, Leamington Arts Centre





## Board of Directors, Staff & Volunteers

### **CHAIR**

Mike Thibodeau

### **VICE CHAIR**

Sheila McBrayne

### **TREASURER**

Penny Belluz

### **SECRETARY**

Jan Bateman

### **EX-OFFICIO**

Tim Wilkinson

Derek Friesen

Ken Friesen

Maria Jose

Mary Jane Nohra

Shelly Quick

Arlene Sinasac

### **DIRECTOR**

Chad Riley

### **GALLERY ASSISTANT**

Sophie Hinch

### **PROGRAM OUTREACH COORDINATOR**

Eric Kirwin

### **CO-OP STUDENT PLACEMENT**

Mackenzie Dyck



*LAC Permanent Collection, 2018*

# Volunteer Program



The LAC is a member of Volunteer Canada and has adopted their code and we are committed to demonstrating our value in volunteerism.

**Who can volunteer?** Everyone! Volunteers at the LAC are as diverse as the art we display and there are many unique opportunities to fit your interests and time. Knowledge of art is not necessary, just an appreciation for art and the enthusiasm to share it with others.

## **Docent + Administrative Assistant**

The Docent + Administrative Assistant will welcome and engage patrons and help them connect with the art and have a memorable visit; inform patrons of current exhibits, upcoming events, classes and LAC activities of interest; conduct tours of the gallery for groups and schools, utilize techniques of dialogue and inquiry, the docent encourages patrons to participate, ask questions and become informed and enthused about the LAC, its exhibits and activities. As Administrative Assistant will help with administrative and office duties, fundraising and marketing campaigns, mailings, data entry and record keeping; Other clerical work such as answering the phone and directing class and inquiries, taking messages and other basic office related tasks.

## **Facilities & Events Assistant**

The Facility + Events Assistant will assist with preparation, coordinating and set up of programs and activities at the LAC such as exhibit installation and de-installation, artist receptions, LAC private rental events and LAC art classes; assist with facility maintenance.

**A special thank you to our regular weekly volunteers for their ongoing dedication and support. These valued volunteers include: Sally LePla, Gerry Thibodeau, and Chao Zhao.**

## **VOLUNTEERS**

Amanda Fox	Ella Riley	Madeline Butler
Anna Lamarche	Emily Bateman	Marg Ross
Astrid Tobin	Eric Naylor	Mari Biehn
Brandon Lefrançois	Fred Gare	Mark Caza
Brenda Jones	Gail Grant	Martha Renaud
Brenda Zakel	Gerri Thibodeau	Noah Riley
Brian Cornies	Gerry Hucko	Paul Jones
Chao Zhao	Gloria White	Phil Ruzsak
Charlie Wright	Irena Vucajnk	Rick Taves
Dale Butler	Jessie Riley	Ryan Bateman
David Light	Joan McDonald	Sally LePla
Deanna Sherman	JoAnne Zamparo	Sandra Fox
Denis Bastarach	John Haynes	Sarah Ouellette
Dennis Riley	Katherine Garant	Steve Morin
Derek Friesen	Kathryn Parent	Susan Ross
Diane Riley	Ken Friesen	Tina Grolman
Dick Grolman	Lisa Bradt	Welli Horne
Doug Biekx	Lois Duncan	
Douglas Bedard	Louise Groeneweg	

## Gallery Assistant

The Leamington Arts Centre is a warm and inviting environment committed to supporting and promoting the arts in and around Windsor and Essex County. This creative space encourages the thriving local art scene through exciting events and engaging programs that I am proud to be a part of. I am able to network with fellow artist, interact with visitors, and I have the chance to see and be inspired by new art works.

I graduated from the Visual Arts program at the University of Windsor where I also acted as Gallery Coordinator for the SOVA Projects Gallery. This particular experience encouraged me to pursue a career in an art institution. I was lucky to find such a great space that allows me to deepen my passion for the arts and to apply my academic knowledge to real life situations.

As Gallery Assistant at the Leamington Arts Centre, I assist with day-to-day tasks, working closely with our Director and artists. I aid in the effective day to day operations of the LAC including assisting with exhibitions and events. I am learning how to construct exhibitions and helping with various prep work tasks. Having the opportunity to connect with inspiring artists and art supporters to create, sustain and celebrate the arts within my community has truly been a rewarding experience.

Sophie Hinch  
Gallery Assistant

## Secondary School Co-op Placement

Co-op education is a grade 11 or 12 program in which the school and community organizations co-operate to provide a unique learning opportunity for students. This program provides an opportunity to senior students to earn out-of-school credits towards graduation that complement a specific in-school course. Co-operative education is an opportunity for students to build confidence and maturity, and to develop career goals and valuable skills. Enrolment in the program is limited and the selection of candidates is determined by the availability of placements and in-school course component, suitability of the applicant and permission of a parent/guardian.

### **Assistant Program Coordinator (September 2018 – January 2019)**

Mackenzie Dyck, a student from Leamington District Secondary School, completed her Co-op course at the Leamington Arts Centre from September 2018 to January 2019. Mackenzie was a valuable help and assisted with a variety of duties from office, administration and clerical assistance, docent, event set up and coordination and facility maintenance.

# Summer Student Program

Each year for the past several years the LAC has been successful at obtaining funding through **Canada Summer Jobs** Program for students under the age of 30 who are returning to school in the fall. Job placements typically range 6-12 weeks, in 2017 the LAC was successful in receiving funding for two students for 8 weeks each. This additional staff allowed the gallery visitor hours to increase by 11 additional hours per week with the gallery being open on Sundays for the months of July and August during peak tourism season.

## **Program Outreach Coordinator (June 30 – Aug 18)**

Under the direction of the LAC Director, the Program Outreach Coordinator will coordinate the SEAA/LAC community outreach and community engagement initiatives; will work to increase the organization's presence in the community and online. Responsible to the Director, the Program Outreach Coordinator will develop and execute effective community outreach initiatives which build new relationships and enhance existing relationships with patrons, businesses and organizations; develop and deliver marketing and advertising strategies which increase awareness of all SEAA/LAC programs and services and attract greater sponsors and donors; use traditional media and social media to enhance SEAA/LAC's visibility within the community; assist in and day to day operations of the Leamington Arts Centre; maintain a positive and professional attitude; display productive and accurate workmanship; adhere to SEAA/LAC policies and bylaws.

## **Program Outreach Coordinator: Eric Kirwin**

During my time working as the Program Outreach Coordinator at the LAC, I was given the opportunity to learn a lot about what it takes to run a gallery, and how to be a contributing member of the arts community. My employment allowed me to build on my pre-existing skills, but in a real world work environment, an opportunity for which I am extremely grateful.

As the Program Outreach Coordinator, I was responsible for jobs such as; designing advertisements and posters, updating the LAC website, assisting in the setting up and taking down of various exhibitions, and ensuring the visitors experience at the LAC was a positive one. Over the course of the summer I was able to learn about the business side of running an art gallery as well. I was able to help coordinate and set up events such as Arts @ The Marina and the opening receptions for exhibitions. I also got to manage memberships, merchandize the gift shop, build relationships with local artists, and experience some of the administrative work that goes on to ensure the gallery is functioning properly.

At the LAC, I was able to do work I enjoyed, in a friendly environment, with a great team of staff. The community the LAC has built is something truly impressive, and I feel privileged to be a part of it. I would recommend the LAC not only as a place of work, but also as an experience overall. I've learned a lot over the course of my employment with the LAC, and feel vastly more prepared to continue work in the arts community.



Eric Kirwin  
*Program Outreach Coordinator*



Government  
of Canada

Gouvernement  
du Canada

Canada





## Donors, Sponsors, Members & Supporters

The South Essex Arts Association/ Leamington Arts Centre seeks donations from individuals as members and donors to support vital programming such as exhibitions, events and education programs. The South Essex Arts Association wishes to acknowledge and recognize the generosity of new and renewing members whose gifts were received in 2017.

### LIFETIME MEMBERS

Dr. and Mrs. Kelley  
George Alles  
Harold Burton  
Harry Enns  
Ken Friesen  
Pat O'Heron  
Phyllis Nelson  
Walter McGregor

### HONORARY

Anna Lamarche  
Caesars Windsor  
Chad Riley  
Highbury Canco  
Leamington Lions Club  
Speedprint Ltd  
WFCU Credit Union  
Windsor Endowment  
for the Arts

### CHAMPION OF THE ARTS (500+)

Allan and Marilyn Scase

### PATRON OF THE ARTS (250+)

Mary Anne Kazuke

### FRIEND OF THE ARTS (100+)

Marg Ross  
Adam and Sheila  
Hubbard-Goodfellow

### NOT FOR PROFIT (\$50)

Leamington District  
Secondary School

### FAMILY (\$40)

Lloyd and Marilyn Brown-John  
Tony and Lois Duncan  
Brigitte Hanchard  
Donna Hyodo  
Joe and Christiana Tagliapietra  
Peter & Astrid Tobin

### INDIVIDUAL (\$30)

Ann Seigel-Roberston  
Jeff Hagan  
Penny Belluz  
Beth Ann de Sousa  
Jim McTavish  
Carol Carruthers  
Madeline Butler  
Yolande Antonuzzo  
Donna Walton  
Deb Marentette  
Renee Helling-Laur  
Deanna Sherman  
Jan Bateman  
Laura Kaake

### STUDENT (\$20)

Caroline Blais  
Tina Rouhandeh  
Alex Anzovino

## ARTISTS (\$25)

Barbara Alkemade  
Kathy Anderson  
Charly Badaoui  
Joan Baller  
Leon A. Barlow  
Mary Bartsch  
Denise Beauvais  
Douglas Bedard  
Anne Benedict  
Tara Benson  
Shannan Benson  
Biblioasis  
Mari Biehn  
Robert Bishop  
Janice Boldt  
Jodi Brown  
Cheryl Burr  
Katherine Burton  
Antony B. Collings  
Jane Cox  
Rochelle Craig  
Carol Dayus  
Nancy De Cairos  
Greg DeHetre  
Elizabeth de Lange  
Krystle DelBen  
Paul C.Deschamps  
Janet Domarchuck  
Glen Donaldson  
Karen Duncan  
Kristyn Dunnion  
Helen Dyck  
Pete and Judith Dzandzas  
Elsie Edwards  
Gerald Enns  
Mary Filipchuck  
Marilyn Fox  
Derek Friesen  
Julie Gahwiler  
Dorit Girash  
Jesse Gledhill  
Ken Grahame  
Jodi Green  
Valerie Gujban  
Carolyn Hardy

Rose Harper  
Leanne Hayes  
Brenda Henry  
Mary Hirt  
Rob Holiga  
Kelly S. Hopkins  
Ryan Horvath  
Gerry Hucko  
Lorie Hussey  
Audrian Hutchinson  
Barbara Jean Jack  
Jacquie Jacobs  
Mary Kendrick  
Mariano Klimowicz  
Rosalind Knight  
Cris Kohl  
Terra Koop  
Patricia Kristy  
Laurie Langford  
Dawn Lavoie-Walters  
Jerry Lawhead  
Sally LePla  
Nancy Longeway  
Pavlo Lopata  
Petro Lopata  
Kelly MAcLellan  
Heather Mallaby  
Brian Malley  
Laurie Masse  
Michael Mastronardi  
Vicki McKay  
April Mills  
Chris Morton  
Leyla Munteanu  
Arlene Murphy  
Eric Naylor  
Mary Newland  
Mary Jane Nohra  
Kelly O'Rourke  
Jim Ogilvie  
Maeve Omstead Johnston  
Mike Ondrovick  
Dave and Kathryn Paddick  
Wendy Perley  
Sherrie Piens

Shelly J. Quick  
Luanne Ribble  
Shelly Anne Rount  
Lynda Ruddock-Rousseau  
Alice Sacharoff  
Cheryl Scorrar  
Lee-Anne Settrington  
Debi Sheverington  
Dan St. Pierre  
Todd and Sherry Stahl  
Heather-Anne & Michelle Stark  
Jim Stein  
Del Stewart  
Bill Sutherland  
Brianne Taggart  
Irina Teske  
Mike Thibodeau  
Kelsey Van Poucke  
Ron and Louise Vermeiren  
Donald Waffle  
Leon Walker  
Joan Watton  
Patti Wheeler  
Sarah Whittall  
Sylvia Whitton Newman  
Beverly Winseck  
Carol A. Winters  
Ruth Woodsit  
JoAnne Zomparo  
Chao Zhao

# Corporate Sponsors/Partners

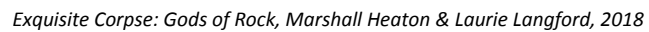
The South Essex Arts Association/ Leamington Arts Centre seeks sponsorships from corporations and other organization in partnership to support vital programming such as exhibitions, events and education programs. The South Essex Arts Association wishes to acknowledge and recognize the generosity of new and renewing sponsors whose gifts were received in 2018.

A1 Chinese Restaurant Leamington  
Aleksander Estate Winery  
Arts Council Windsor & Region  
ArtBuild Ontario  
Blackburn Radio  
Bradt's Butcher Block  
Brandsource Gabriele  
Business Improvement Area (BIA)  
Caesars Windsor  
Chuck's Roadhouse  
Country FM 95.9  
Crave Family Gill & Pub  
Del Fresco Pure  
Dr. George & Dr. Dainty Dentistry  
Festival Tents & Party Rentals  
Friends of Point Pelee  
Gilligan's Neighbourhood Pub  
Highbury Canco  
Imagine Cinema  
Ives Insurance  
Jaz Marketing  
Jose's Bar & Grill  
Kenzart  
Kiwanis Club of Leamington  
Lakeside Bakery  
Leamington District Memorial Hospital

Leamington Lions Club  
Leamington District Chamber of Commerce  
Mark Caza Photography  
Mix 96.7  
Photography & Framing by Anna  
Rotary Club of Leamington  
RC Spencer & Associates  
Security One  
Shooters Photography Club  
Southpoint Publishing  
Speedprint Ltd.  
Tecumseh Shoreline  
The Bank Theatre/Sun Parlour Players Community Theatre  
The Mix 96.7FM  
The Municipality of the Town of Leamington  
The Town of Kingsville  
Tim Horton's Café & Bake Shop  
The Lesson Lounge  
Tourism Windsor Essex & Pelee Island (TWEPI)  
Uptown Leamington BIA  
Oak Farms  
Windsor Endowment for the Arts (WEA)  
Windsor Family Credit Union (WFCU)  
Windsor Tarot

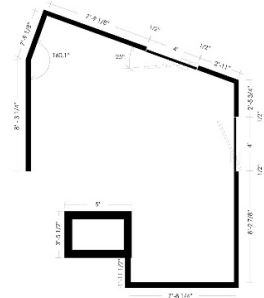






The LAC is a state of the art gallery which offers three exhibition spaces with over 300 linear feet of continuous wall space and 2000sq/ft of floor space a gift shop, art classes, workshops and meeting spaces. The LAC is one of the area's paramount places to view modern art with an emphasis on local and aspiring artists and artisans.

Admission to the LAC is always free, donations appreciated. And be sure to join us each month for the new exhibits opening receptions where you can meet the artists, see their works, meet new people, network and collaborate with other creative minds, share in the enjoyment of the arts and enjoy light refreshments on the house!







## 2018 Community Gallery Exhibitions

In recent years the second floor of the LAC was comprised of the Erie Quest Shipwreck Museum, office spaces and a small meeting space. However, much of these spaces were either vacant or under-used.

After the announcement of the loss of Erie Quest, much of the year was focused on dismantling the collection, which had been housed at the LAC for over a decade. This primarily included locating owners of artifacts and documents and arranging the legal and rightful removal of historical items. Once the space was empty the LAC began a re-purposing initiative which included transforming and renovating the space into a 4th exhibition space and new community room as well as a second kitchen to enable hosting larger events and more elaborate facility rentals such as wedding, showers and corporate business seminars and community group meetings. With investments from the municipality to upgrade electrical and plumbing, repair walls and replace emergency lighting, the room was fit to be remodeled. A very generous donation from local business Counter Effects funded 100% of the materials and installation of all new cabinets and quartz countertops and a donation from the Uptown BIA will contribute the purchase of appliances.

After some creative reworking of the spaces and some courage for 'big change'... and much time reorganizing the LAC is proud to announce that in 2018 the second floor will feature a new exhibition space as well as a larger community meeting space.

**January 2 – March 31**

**IT HAS TO BE SAID: Deborah Cameron**

These paintings reflect the journey of me becoming conscious of the silence and being freed to share again.

**April 3 – June 29**

**ECLECTIC PERSONAS: JERRY LAWHEAD**

Digital montage personas on canvas and other media.

**July 3 – September 22**

**ATMOSPHERES: Dorit Girash**

An exploration of the infinitely variable artistry created by the interplay of the sun's energy with air, water and life.

**September 25 – December 22**

**CRYSTAL CLEAR: Leyla Munteanu**



*\*Zip Code (N8H 1M4). 2018*

## 2018 Exhibitions

January 2 – January 27

### **ANYTHING'S POSSIBLE: AMATEUR PHOTO CONTEST**

This annual exhibit features striking photographs in 3 categories: Parts & Pieces, Insects & Animals, Rain or Shine. Sponsored by: Speedprint Ltd. & Framing by Anna

January 30 – February 24

### **\*ZIP CODE (N8H 1M4)**

Zip Code is an exhibit of selected works from the region by the guest curator Douglas Bedard (DKN Blues.) The exhibit's focus is to bring together a collection of efficacious works in a variety of mediums and subject matter throughout the artist's careers.

### **PERMANENT COLLECTION: Leamington Arts Centre**

Since its founding in 1971, the SEAA/LAC has acquired hundreds of works of art, collecting in the areas of Canadian and international historical and contemporary art.

### **GO WITH THE FLOW: Leyla Munteanu**

Munteanu uses specialized acrylic paints poured onto stretched canvas to create vibrant and hyper-colourful original works.

February 27 – March 31

### **WFCU CREDIT UNION PAINTING COMPETITION + EXHIBIT**

The WFCU Credit Union Painting Competition + Exhibit is an incredible opportunity for emerging, mid-career and established artists to present their most accomplished works at the LAC for a chance to win cash prizes. Sponsored by: WFCU Credit Union

### **BREAKING BARRIERS: Group Exhibit**

The Breaking Barriers exhibition's focus is to create an understanding of lived experiences. The exhibition seeks to highlight resilience and resourcefulness in coping with barriers.

April 3 – April 28

### **JURIED STUDENT ART SHOW: 20th Annual**

The LAC presents the 20th Annual Juried Student Art Show featuring works by Secondary Students from across Essex County. Sponsored by: Rotary Club of Leamington & the Kiwanis Club.

May 1 – May 26

### **POINT PEELEE 100 STUDENT ART SHOW: Point Pelee National Park**

Celebrate the rich natural and cultural heritage of Point Pelee as we reflect on the history of community and conservation and look towards the future.

### **NESTING: Leamington Flock Fest**

The Leamington Flock Fest is an annual arts event which brings the community together to embrace the arts. The Flock Fest is an exhibition of work representing the journey of creative exploration, connecting and soring past our personal limits.

### **SPRING STUDIO CLEAR OUT: Group Exhibit**

Artists have cleared out their studios! Amazing clear out deals on original and one of a kind works of art.

May 30 – June 29

### **U18: 2018 LAC Members Show & Sale**

The 2018 annual members show and sale celebrates the strength, vitality, creativity and wealth of talent found within the Leamington Arts Centre (LAC)/ South Essex Arts Association (SEAA).

### **VANGUARD Youth Arts Collective: Group Exhibit**

Vanguard Youth Arts Collective is a group of creatively driven youth who strives to enrich the artistic culture in our community through youth engagement. This exhibition brings together new and returning members of the Vanguard team to celebrate their unique and shared experiences.

### **CANADIAN LANDSCAPES: George Paginton**

Inspired by the Canadian landscape like the Group of Seven, George Paginton's direct, truthful and rugged depiction of Canada served him as a personal escape.



*PERMANENT COLLECTION: Leamington Arts Centre. 2018*





*ENTANGLED: Jacquie Jacobs & Silvia Whitton. 2018*

## 2018 Exhibitions

July 3 – July 28

### **CANADIAN DIVERSITY: Jim Ogilvie**

Canadian Diversity explores the idea that commonly held beliefs are continually shaped by landscapes, both real and imagined, and those not yet realized as a means to artistic, social and political ends.

### **A YEAR ON THE WATER: Rosemary Dzus**

This project is a documentary, or a diary, of a year's worth of paintings of a single view at a specific time, of the marina harbour in Leamington, Ontario.

### **PEACE OF MIND: Chao Zhao**

My Origami experience started from simple to complex folding and then evolved to creative works – folding a piece of paper without scissor cuts and no glue, making a sheet of flat paper to beautiful 3D object.

July 31 – August 25

### **ENTANGLED: Jacquie Jacobs & Silvia Whitton**

There is a poetry to quantum physics research that investigates the confluence of space/ time, blasting the notion of absolute location; where states of particles are loosely coupled with the energetic state of their surroundings, and where "here" can be two places at once.

### **YOUNG @ H-Art: Half Century Club**

The Half Century Club Art Group began with a single art teacher wanting to teach a small group of beginners in the 1970s. Faithful to our mission to introduce beginners to the arts, we have built to 15-20 members throughout the ensuing decades.



*CANADIAN LANDSCAPES: George Paginton, 2018*

August 28 – September 22

### **LIGHT – VISION – EMOTION – 2018: Phos3 Photography**

Kathryn Parent and Dave Paddick are a husband and wife team from Chatham, Ontario, often found storm chasing or driving down country roads photographing abandoned houses and whatever else catches their eyes along the way.

**EXQUISITE CORPSE: GODS OF ROCK: Marshall Heaton & Laurie Langford**  
Music rallies the masses. Music is political. Music creates emotions faster and with greater regularity than any other type of art. Music soothes savage beasts (and artists). Music is everything.

### **WASHED UP: Kimberly Heaton**

While I walk the beach at Seaciff Park I become a beachcomber, a true and noble treasure hunter. It stands to reason that one mans trash is another mans treasure; if each of us saw the shore as a treasure worth protecting, our noble recreational pursuit could become a better way of life for all.

September 25 – October 27

### **AS I SEE IT: John Haynes**

Even as a young child, I felt interested in expressing myself by working with colour, texture, shapes and design in a visual way. My paintings express the thought and feeling that I am dealing with at the time of their creation.

### **EXPOSED TO LIGHT: Douglas Bornn**

In recent years my photographs have increasingly headed towards abstraction. I feel that much of my work (and for a long time now) has been motivated by a sense of the abstract even while working with wholly rational, un-manipulated subjects.

October 30 – November 24

### **MEMBER SHOW & SALE: Shooters Photography Club**

Have passion for photography? Interested in being involved and gaining some knowledge and experience? See what the Shooters Club members have been up to.

### **FAR OUT SHOW: group show**

This exhibition's focus is to highlight and showcase those offbeat, avant-garde, radical and/or extreme works of art that make us all think outside the box and push the limits of expressionism in contemporary art.

November 27 – December 22

### **A SIGNATURE CHRISTMAS: Indoor Artist Market**

LAC presents its annual indoor Christmas Arts & Crafts show. Featuring artists and artisans in a variety of mediums, this beautiful hold a variety of gifts for everyone on your list.



*Art in the Parkette, September 2018*

## 2018 Events & Programs

### January



#### **WELLNESS THROUGH ARTS PROGRAM**

Ongoing Through 2018

The Leamington Arts Centre / South Essex Arts Association are proud to announce in partnership with the Leamington District Memorial Hospital the Wellness Through Arts Program. The program's aim is to integrate the creative arts into the healing spaces within the hospital by reducing stress and promoting calming environments.

#### **OPENING RECEPTIONS & AWARDS CEREMONY: JANUARY EXHIBITS**

Fri, Jan 12, 7-9pm

#### **MESH: Artist Network Meetings**

Creative people, coming together.

Fri Jan 20, 12pm - 1:30pm

The Leamington Arts Centre presents free Artist Networking Meetings aimed at supporting the personal and professional development of artists in the Windsor-Essex and Pelee Island Region. Led by the Vanguard Youth Art Collective, artists will discuss the topic of youth and community involvement in the arts.

### February

#### **OPENING RECEPTIONS: FEBRUARY EXHIBITS**

Fri, Feb 2, 7-9pm

#### **CORKS & CANVAS: Wine & Paint Night**

Fri Feb 9, May 18, Oct 19, 7pm

Enjoy a paint night at the LAC! Corks and Canvas is an evening to "drink creatively" with your friends or significant other. Generously Sponsored by the Leamington BIA, Aleksander Estate Winery.

### March

#### **OPENING RECEPTIONS & AWARDS CEREMONY: MARCH EXHIBITS**

Wed, Mar 7, 7-9pm

#### **MARCH MASQUERADE: 5th Annual Fundraising Party**

Fri March 23, 7-11pm

Experience a UNIQUE and EXCITING evening at the LAC. Enjoy food and beverages, live music, guest photography, games and prizes, Tarot & Palm Analysis, and a silent auction.

### April

#### **ANNUAL GENERAL MEETING**

Tues April 10, 6:30pm

Guest Speaker: Carolyn Rourke, President, Windsor Endowment for the Arts.

Learn about \$29,000 in arts grants offered bi-annually. All Welcome. Seeking new board members, please contact us if you are interested in sharing your time, energy and passion for the arts with us.

#### **OPENING RECEPTIONS & AWARDS CEREMONY: APRIL EXHIBITS**

Thurs, Apr 12, 7-9pm

### May

#### **OPENING RECEPTIONS: MAY EXHIBITS**

Fri, May 11, 7-9pm





Arts @ the Marina, July 2018

## 2018 Events & Programs

May

### **MESH: Artist Network Meetings**

Creative people, coming together.

Sat, May 11 12pm - 1:30pm

The Leamington Arts Centre presents free Artist Networking Meetings aimed at supporting the personal and professional development of artists in the Windsor-Essex and Pelee Island Region. Led by artists Irena Vucajnk, Lee-Anne Settingington, and Carrie-Ann Peters, participants discussed Victorian monuments, the process of rebirth and renewal, and the greater theme of "nesting".

June

### **OPENING RECEPTIONS: JUNE EXHIBITS**

Fri, June 1, 7-9pm

### **A1 CHINESE FUNDRAISER FOR THE LAC**

Mon June 4, 11am - 9pm

Please join us on Monday June 4 between 11am and 9pm for lunch or dinner at the A1 Chinese Restaurant at 321 Erie Street South, Leamington. Let your server know you are there to support us and a portion of your bill will go directly to the SEAA/LAC.

### **ARTS @ THE MARINA**

Sat, June 30 & Sun July 1, 10am - 5pm

Bring the whole family out to enjoy a wide variety of artwork and entertainment at Leamington's beautiful waterfront. With dozens of artists displaying unique and creative pieces spread out across the park grounds. Come for a stroll to see new interesting local and area wide artist works.

July

### **OPENING RECEPTIONS: JULY EXHIBITS**

Sat, July 7, 7-9pm

August

### **OPENING RECEPTIONS: AUGUST EXHIBITS**

Sat, Aug 11, 7-9pm

### **MESH: Artist Network Meetings**

Creative people, coming together.

Sat, Aug 11, 12pm - 1:30pm

The Leamington Arts Centre presents free Artist Networking Meetings aimed at supporting the personal and professional development of local artists. Led by Jacquie Jacobs and Sylvia Whitton, participants discussed each of their individual art practices with a particular focus on time and space.

### **OPENING RECEPTIONS: AUGUST EXHIBITS**

Sat Aug 18, 7-9pm

September

### **OPENING RECEPTIONS: SEPTEMBER EXHIBITS**

Fri, Sept 14, 7-9pm



Rob Lutes, Concert Taping, November 2018



*Corks & Canvas: Wine & Paint*

## 2018 Events & Programs

### September

#### **GILLIAN'S FUNDRAISER FOR THE LAC**

Tues, Sept 18 11am-10pm

Please join us on Monday April 10th between 11am and 10pm for lunch or dinner at the Gilligan's Neighbourhood Pub, 26 Erie St. North, Leamington. Let your server know you are there to support us and a portion of your bill will go directly to the SEAA/LAC.

#### **Opening Receptions: October Exhibits**

Fri, Sept 28, 7-9pm

#### **ART IN THE PARKETTE**

Fri, Sept 28 5-9pm

In conjunction with Culture Days, the LAC, the uptown BIA, and the municipality of Leamington proudly present: Art in the Parkette. Art in the Parkette is an under the stars artists market.

### November

#### **OPENING RECEPTIONS: NOVEMBER EXHIBITS**

Thurs, Nov 1, 7-9pm

#### **HOLIDAY NIGHT MARKET**

Sat, Nov 24, 3-9pm

Presented by the LAC and the Municipality of Leamington in partnership with the Uptown Leamington BIA, the Leamington Chamber of Commerce, and the Bank Theatre. Leamington shines with bright lights at it's first winter's night Holiday Market! Hosted alongside the wildly successful Christmas parade, join us for an evening of local music, makers, and holiday cheer!

### December

#### **OPENING RECEPTIONS: DECEMBER EXHIBITS**

Fri, Dec 7, 7-9pm

#### **A SIGNATURE CHRISTMAS:**

##### **Indoor artists market**

Nov 27 - Dec 22

LAC presents its annual indoor Christmas Arts & Crafts show. Exhibit and sell your work directly inside our beautiful galleries during this month long "gift shop" style exhibition with a warm Christmas setting.



*MESH: Artist Network Meetings, 2018*





## 2018 Gift Shop

Our shop boasts a wide selection of quality original local artworks, one of a kind gifts, jewelry, music, books, as well as children's books and anything to stimulate creative potential. Perfect Unique Gifts for Weddings, Anniversaries and any occasions for that someone special...

## 2018 Gift Shop Exhibitors

Alex Klassen	Elizabeth Anne Hebert	Kelly MacLeallan	Petroglyph Soaps
Anna Lemarche	Elizabeth Gaye MacDonald	Ken Friessen	Robert Gervais
Barbara Alkemade	Eric Naylor	Klas Squared	Rosalind Knight
Brandy Martin	Friends of Point Pelee	Kristyn Dunnion	Ron Vermeiren
Brian Sweet	Gerry Hucko	Laurie Langford	Ryan Horvath
Biblioasis	Geri Thibodeau	Leona Maxwell	Sally LePla
Chad Riley	Harold Burton	Leyla Munteanu	Sandi Collins
Charly Badaoui	Irena Vucajnk	Louise Vermeiren	Sarah Rupert
Chris Newman	Irina Teske	Lynda Ruddock Rousseau	Shelley Craig
Christina Tagliapietra	Jan Bateman	Maeve Omstead Johnston	Susan Dupont Baptista
Christina Thibert	Jim McTavish	Marnie Parsons	Susan Ross
Claudette Schiller	Jim Stein	Mary Kendrick	Terry Dolle
Coleen Thibert	Jo Parsons	Mary Newland	Todd & Sherry Stahl
Cris Kohl	Joan Pival	Michelle DeLacey Bruner	Tom Omstead
Dave Atkinson	Joe Taliapetra	Michelle Dobrin	Vesna Bailey
Dave Paddick	John Haynes	Monique Hebert	Vicki McKay
David Beasley	Julie Bell	Nelcy Martinez	
Dennis White	Justin Latam	Nicole Barron	
Dorit Girash	Karen Ross	Patti Wheeler	
Deborah Cameron	Kathryn Parent	Pelee Music	

## Art Supply Store

Since 2016 the LAC has been carrying a variety of art supplies to support local artists! Name brands such as Golden, Amsterdam, Lukas, Prismacolor, Canson, Micron, Finetec, Prismacolor, Koi, and more! Acrylic paints, oil paints, canvases, palettes, palette knives, watercolour paints, watercolour pencils, watercolour paper, frames, gesso, coloured pencils, graphite pencils, pen & ink, fixatives, clay, sketch pads & paper, printmaking supplies!



## Permanent Collection

### Henry Collection: Historic Art & Artifacts

The Henry Collection, donated by the Henry Family, is a permanent collection of the Municipality of Leamington and is housed at the Leamington Arts Centre. The Collection features various art and artifacts collected from all over the globe including works from far East Asia and North America.



### Local and Culturally Significant Artwork

The SEAA/LAC's collection is of great pride amongst its staff, members, and constituents. We take seriously our mission to enrich culture through the collection and preservation of art. Since its founding in 1971, the SEAA/LAC has acquired hundreds of works of art, collecting in the areas of Canadian and international historical and contemporary art.

The collection has been built both through donated gifts and considered purchases. Approximately 90% of Gallery acquisitions come from private donors—often dedicated collectors looking for a permanent home for their works where they will be appreciated, cared for, and put on display for others to enjoy. Artists also donate their work, such as Jeet Aulakh's *Namo Ek Yoge*; 2010 oil on canvas. It is because of the generosity of these donors that the SEAA/LAC enjoys the position it holds as a collecting institution.



## 2018 Notable New Acquisitions: SEAA Collection



**Frère Jérôme Paradis**  
**Sans Titre**

1981. 101.6cm x 66cm; Acrylic on Paper

Canadian Grand master, painter, professor, teacher, pedagogue, Frère Jérôme was born in 1902 in Charlesbourg, Québec. He studied from 1936 to 1938 at the School of Fine Arts in Montreal. Paradis became a leading figure of abstract art in Quebec by the originality of his artistic work and forward thinking.

As a visual arts teacher at Notre Dame College where he taught nearly 10,000 students over 70 years, Paradis developed avant-garde artistic techniques merging spirituality, automatism and abstract pictorial language.

When he died in 1994, he left behind an impressive body of more than 3,000 works and an impressive artistic legacy that marked a generation of artists.

**The Leamington Arts Centre would like to thank Douglas Bedard of Windsor, ON for his generous donation.**



**Camrose Ducote**  
**Untitled**

1998. 58.5cm x 45.7cm, Mixed-Media

**Camrose Ducote** grew up Colorado which influences her work today. Her visual language is abstraction which relies on sense impressions over the narrative. She describes her work as “a reflection of the transient nature of life.” Her process begins with paper on to which she applies a spackle compound. Several layers of acrylic medium and washes of paint are applied, later to be rubbed away, leaving only a residue of marks. These become the foundation upon which she builds.

Ducote graduated from the University of Northern Colorado in 1974. Her work is included in the Canada Council Art Bank, the Contemporary Art Gallery in Vancouver, BC and numerous corporate and private collections in Canada, the US and Europe, including the Leamington Arts Centre.

**The Leamington Arts Centre would like to thank John and Patricia Haynes of Leamington, ON for their generous donation.**

## 2018 Notable New Acquisitions: SEAA Collection



**John Saarniit**  
**Norway Shore**  
1961. 66cm x 50.8cm, Oil on Board

Originally from Estonia, John Saarniit was conscripted by the Russian army after their invasion in 1941. He spent some time in a concentration camp in Siberia, but escaped and fled through Nazi-Germany to Finland. While living in Sweden he organized, for the first time in history, an anti-Communist exhibition. In 1948, he immigrated to Canada and began working as an artist. He is known for painting landscapes using bold brushstrokes and vibrant colours.

**The Leamington Arts Centre would like to thank John and Patricia Haynes of Leamington, ON for their generous donation.**



**Harold Town**  
**Side Light**  
1956. 55.2cm x 42.5cm,  
Single Autographic Print

**Harold Town** (June 13, 1924 – December 27, 1990) was a Canadian abstract painter. He is best known as a founding member of Painters Eleven, a group of abstract artists active in Toronto from 1954-1960.

Known as an "unpredictable" painter, Town's work moved quickly from a dark expressionist style to abstraction which contrasted vivid colours. Highly eclectic, Town's work explored a wide range of contemporary and historical styles. In the 1960s, Town developed a style of prints which he called "Single Autographic Prints" These monotype prints were colourful and delicate, juxtaposing contrasting and unexpected textures and fragments. Towns works can be found in numerous collections in Canada and the United States, including the Solomon Guggenheim Museum, the Museum of Modern Art and The Leamington Arts Centre.

**Leamington Arts Centre acquired this piece through purchase.**



## 2018 Notable New Acquisitions: SEAA Collection



**Karel Appel**  
**Untitled**

1970. 66cm x101.6cm, Colour Lithograph

**Karel Appel** was an influential Dutch painter whose figurative abstractions employed expressive colors and forms. Born on April 25, 1921 in Amsterdam, Netherlands, Appel studied at the Rijksakademie van Beeldende Kunsten in Amsterdam and held his first solo exhibition in 1946. Appel found inspiration in the artwork of children and in the rejection of sophisticated aesthetic tastes. The style distinguished itself through bold, expressive compositions inspired by folk art.

Appel's works are presently held in the collections of The Museum of Modern Art in New York, the Art Institute of Chicago, the National Gallery of Art in Washington, D.C., as well as the Leamington Arts Centre.

**Leamington Arts Centre acquired this piece through purchase.**



**Raymond John Mead**  
**Untitled**

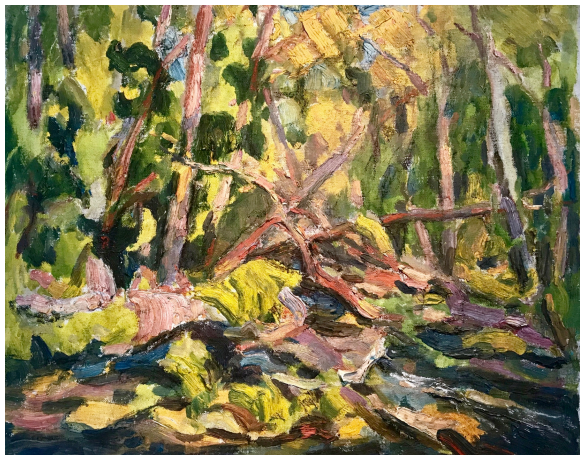
1979. Watercolour

**Ray Mead** was a member of Canada's own ground-breaking crew of abstractionists, Painters Eleven. At their start in the 1950s, these artists abandoned all literal representation for a purely abstract expression. He worked with layers allowing bits to show through thus creating both depth on the surface and windows into his process.

Mead was born in 1921 in Watford in Hertfordshire England. He studied Fine Arts at the Slade School until 1939, when he joined the Royal Air Force as a fighter pilot. In 1941 while serving as a flying officer, Mead crash-landed and was injured. Following his recovery, he was posted to Hamilton, Canada. During this period he was exposed to American culture and the New York art scene. He made the decision to remain in Canada and he settled in Hamilton. Mead established himself as a Master Canadian painter showing his work across the country. His work is included in numerous collections including the National Gallery of Canada, the Art Gallery of Ontario, and the Leamington Arts Centre.

**Leamington Arts Centre acquired this piece through purchase.**

## 2018 Notable New Acquisitions: SEAA Collection



Inspired by the Canadian landscape like the Group of Seven, George Paginton's direct, truthful and rugged depiction of Canada served him as a personal escape. His intensity of colour and freedom of technique brought out a sense of beauty rarely seen because he preferred to paint for his own enjoyment.

Paginton spent his early years as an orphan in England and arrived in Lindsay, Ontario at age 10 as farm labour. He spent a term at the Ontario College of Art Summer School at Port Hope and studied under the direction of noted Canadian artists, J.W. Beatty, Frederick Haines, and Frederick Challenger.



Like many recognized Canadian artists, Paginton became a commercial artist. His skills quickly developed and were rapidly noticed as he landed his first job at Photo Engravers and Electrotypers Ltd., of Toronto. Then, starting in 1927, he began a forty-three year-long and rewarding career at the Toronto Star. As an editorial illustrator, he covered events such as the construction of the Toronto subway and Toronto's City Hall, and the building of the St. Lawrence seaway. He began painting his own work in his free time.

Although roughly twenty years younger, Paginton was closely associated with the Group of Seven and even shared space in the Studio Building where many of the Group of Seven members worked. He became friends with A.Y. Jackson and was a pallbearer along with A.J. Casson at Jackson's funeral.

**The Leamington Arts Centre would like to thank Tony Paginton, son of the artist, and his wife Roswita Busskamp for their generous donations.**

***Ascending Road, 1964***  
*Oil on canvas board*

***Churning Water, 1970***  
*Oil on canvas board*

***Farm House, 1947***  
*Oil on Canvas board*

***Forest Stream, 1978***  
*Oil on canvas board*

***Orchard, 1960***  
*Oil on canvas board*

***Ontario Spring, 1973***  
*Oil on canvas board*

***Two Shacks, 1962***  
*Oil on canvas board*

***Sailboat, 1927***  
*Oil on canvas board*

***Spring Road, 1949***  
*Oil on Canvas board*

## 2018 Notable New Acquisitions: SEAA Collection



**William Ronald**

**Untitled**

1963. 45.7cm x 61cm, Watercolour

**William Ronald** was the founder of Painters Eleven, the pioneer movement of Modernism in Canada. Ronald graduated from the Ontario College of Art in Toronto in 1951. The following year, he visited New York City where he studied with the American Abstract Expressionist painter, Hans Hofmann.

Ronald eventually left Painters Eleven to live in New York where he worked on contract for the Kootz Gallery until 1964 and was quickly accepted by critics and collectors. Upon his return to Toronto, he worked as a CBC TV and radio journalist.

William Ronald won the International Guggenheim Awards, Canadian Section in 1956, and was part of the National Gallery of Canada's Second Biennial of Canadian Painting in 1957. In 1977, he was awarded a Canada Councils senior arts award to pursue his Prime Ministers project.

**Leamington Arts Centre acquired this piece through purchase.**



## 2018 Notable New Acquisitions: SEAA Collection



**Ben Jensen**  
**Street Scene**  
26cmx20cm; Oil on Canvas



**Ben Jensen**  
**Untitled**  
26cm x 32cm; Oil on Board

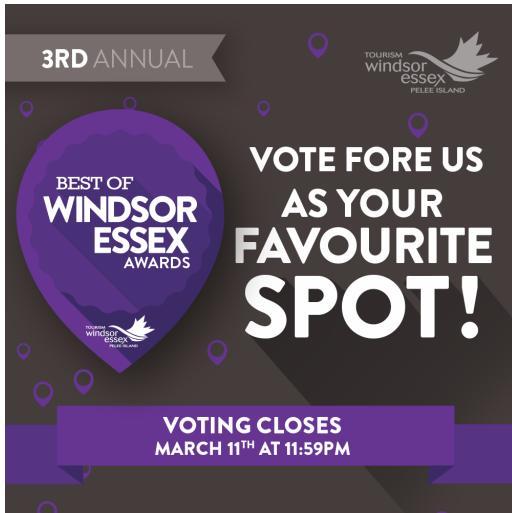
**Ben Jensen** was born in the Danish port town of Skive. Jensen is a self - taught, full time professional artist, and he has been painting for thirty years. Working primarily in oil, his work covers a wide spectrum of subjects, including street scenes, historic buildings and vistas of the northern wilderness special affinity for the sea and ships is reflected in his ever popular marine scenes. His works are found in the City of Toronto Archives, in municipal collections, as well as in private and corporate collections worldwide. He has exhibited in many one man shows as well as group shows.

The Leamington Arts Centre would like to thank Louise Cornies and Jan Bateman for their generous donations.

### The Best of Windsor Essex Awards

The Best of Windsor Essex Awards are a social media campaign organized by Tourism Windsor Essex Pelee Island in an effort to learn from locals where they want to dine, shop, play and stay. We recognize where locals like to go, so do visitors. This campaign is designed to highlight some of the best of our region and share it with the close to 5 million tourists who visit our region annually.

Once again in 2018, the Leamington Arts Centre was chosen as a finalist for the Tourism Windsor Essex Pelee Island's 3rd Annual BEST OF WINDSOR ESSEX awards. The LAC was a finalist for the ARTS & ENTERTAINMENT – BEST ART GALLERY OR ART SPACE award. The other nominees were: the Art Gallery of Windsor, the Gibson Art Gallery, the Leamington Arts Centre, Merlis' Eatery & Beverage House, and Nancy Johns Gallery. The Leamington Arts Centre would like to congratulate the Art Gallery of Windsor on their win! Thank you to everyone who voted!



### Chad Riley

#### ARA Judging

LAC Director Chad Riley was one of the jurors for the Juried Competition "Positively Windsor – Essex" organized by the Association of Representational Artists - Windsor Essex (ARA). This was the ARA's 40th Annual Art Show & Sale. Since 1978, the ARA is the largest organized association of Artists in the Windsor & Essex region. They hold monthly meetings, show & tell, themed challenges, demonstrations and workshops.

### Sophie Hinch

#### Programs & Residencies

Gallery Assistant Sophie Hinch is involved in the francophone Arts community as Artist in Residence for the Conseil Scolaire Catholique Providence. She travels across Southwestern Ontario delivering specialized art workshops in French language elementary schools. She also had the opportunity to mentor the Majeur Haute Specialization program at l'École Secondaire Catholique L'Essor students as they prepared their graduating exhibit. She also serves as a monthly Arts & Culture Correspondent for CBC/Radio-Canada CBEF.

#### Jurying & Prepatatorial Services

Sophie Hinch also served as a juror for the Working with the Environment Student Exhibit as well as the Free Space Residency at the Arts Council Windsor & Region. She also assisted local artist Donald Waffle install his exhibit Art Alive! at the Carnegie Arts & Visitor Centre in Kingsville.

#### Vanguard Youth Arts Collective

Sophie stepped in as president of the Vanguard Youth Arts Collective. Vanguard is a group of young creatives in the Windsor and Essex County region, which advocates for the arts, promotes inclusiveness, and fosters connections in their communities. Vanguard was the recipient of the Community Arts: Arts Infrastructure Grant given by the Windsor Endowment for the Arts. Vanguard also held its first group show at the Leamington arts Centre in June and completed their first mural at Windsor City Hall, commissioned by the City of Windsor.



# Accolades & Professional Services

## International Society of Appraisers

The International Society of Appraisers (ISA) is the largest of the professional personal property appraisal associations representing the most highly trained and rigorously tested independent appraisers in the United States and Canada. We are a not-for-profit, member-driven association, formed to support our member needs and to enhance public trust by producing qualified and ethical appraisers who are recognized authorities in personal property appraising.

ISA was founded in 1979. Over the past 39 years, the society has grown to be the undisputed personal property association of choice. Our Core Course in Appraisal Studies is widely regarded as the most comprehensive in the industry, distinguishing ISA as the leader in methodology, theory, principles, practices, and ethics. We also offer extensive professional development in specific areas of product knowledge and connoisseurship, both through coursework and continuing education offerings at our annual conference.

ISA's membership is diverse and collegial. Our members include many of the country's most respected appraisers, consultants, curators, scholars, gallerists, estate liquidators, auctioneers, and dealers. We pride ourselves on a strong national network of appraisers who draw on highly specialized knowledge, skill, and experience, serving as a resource to our fellow members in a spirit which is unparalleled. Our four main divisions are: Antiques, Furnishings + Decorative Arts; Fine Art; Gemstones and Jewelry; and Machinery and Equipment.

Personal property appraising is an evolving profession and the ISA courses continue to advance, reflecting the most sophisticated knowledge and technology available. Additional courses are in the process of development, including a state-of-the-art, comprehensive online learning platform.

### **At ISA you can find the most skilled Personal Property Appraiser for your needs.**

The hundreds of members of the International Society of Appraisers include a broad range of qualified professionals. Whether you're looking for an antique appraiser, jewelry appraiser, art appraiser, automobile appraiser, furniture appraiser, or anything else in the world you would like appraisal services for – we've almost certainly got someone to fill your needs.

Our qualified professional appraisers have expertise in all types of appraisals and appraisal-related services including estate tax appraisals, insurance damage claims, estate liquidations, estate probate, business valuations and more.

Not only do we have the most skilled Professional Personal Property Appraisers, but our members offer many other services as well... Their services don't stop there! Many are experienced in auction services and auctioneering, estate sales, expert witness testimony, and work as consultants in many areas including art and furniture conservation, restoration, and repair.



*Education Studios at the Leamington Arts Centre*

## Education Programs

The LAC strives to help enrich our communities understanding and appreciation for the arts and culture while assisting to enhance skills and talents for both youth and adults. Come join us and explore your artistic side. Develop your skills and have fun in our relaxed lower level studios. Our teachers offer a broad range of adult and children's classes suited to all levels and areas of interest from acrylic, oil, watercolour and encaustic painting, drawing, printmaking as well as specialized individual one on one classes and holiday and seasonal art camps for children.

### 2018 Art Classes

#### Ongoing in 2018

##### **Introduction to Printmaking & Open Studio with Marshall Heaton**

Through a series of four classes, printmaker Marshall Heaton will allow artists to explore the art of relief printmaking and intaglio printmaking. Artists will hand-pull their own work and utilize an etching press, all while learning about the art of multiples, editions, transfers, mono-printing and various post printing additive processes.

##### **Open Studio**

Artists of all levels work on their own projects in a supportive and creative learning environment.

#### February

##### **Valentine's Day Kids Art Class with Jenn Johns**

February 7-8, 6pm

Create a one-of-a-kind painting on canvas that will be transformed into beautiful Valentine's day cards!

#### March

##### **Art Journaling: An All Ages Art Class**

March 21 – April 18, 12:30pm – 2:30pm

This five-session art class will teach you how to journal in a creative and original way! Perfect for beginning and professional artists.



*Introduction to Printmaking with Marshall Heaton*





## 2018 Art Classes

March

### March Break: Kids Art Camp

March 12-16

Looking for something fun to do this March Break? Have fun creating mosaic art and mixed-media art projects, learn something new and develop your artistic skills!

### Mixed-Media Art Adventures

March 21 & 24, April 18 & 21

Explore various themes including colours, lines and shapes with a variety of materials and create interactive projects!

April

### Mosaic Art with Astrid Tobin

April 8, 2-4pm & April 29, 2-3pm

Learn about the ancient art of mosaic making in this fun and interactive workshop!

October

### Fall 2018: Kids Art Classes

Saturday October 13, 27, November 10, 24, 10am-12pm

Learn the ins and outs of acrylic and watercolour painting in this 4 part art class.

November

### Mosaic Art with Astrid Tobin

November 30 & December 7

Learn about the ancient art of mosaic making in this fun and interactive workshop!





## Facility Rentals

The LAC is proud to provide a gathering place for the community's programming needs and special events. Our space is available to individuals, businesses, community groups and organizations for private social events such as baby showers, bridal showers, wedding ceremonies, book launches, meetings, educational and business events, and more.

The beautiful main floor galleries offer large spaces for entertaining and socializing with plenty of room for hors d'oeuvres and cocktail tables, buffets, receiving tables, or seated catered dining. It's the perfect unique setting for showers, weddings, anniversaries, book launches, CD releases and more. The galleries are available for facility rentals after 5pm any day of the week including weekends. *\*some exceptions may apply.*

The large 2nd floor community room is the perfect setting for educational programs, seminars, workshops, meetings and conferences. It comes equipped with a 100" projector screen, tables, and seating for up to 70. The community room is available all hours any day of the week including weekends.

The lower level studio space is a great space to get messy with paints, crafts and hands-on work. Studio space is available monthly for artists and arts instructors to hold classes and workshops. It is equipped with its own clean up station, tables, chairs and washroom. It is available all hours any day of the week including weekends.







## Facility Rentals

In addition to exhibition space in our galleries, the LAC also offers office space, meeting room space as well as workshop and studio space, plus, it's fully accessible! In 2018, several local business made use of the LAC. Revenues from facility rentals aid in offsetting operating costs so more funds can be used for programing and events. The LAC truly is a building for the community.

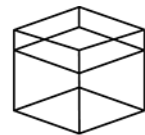
## Office Space Rentals



New office located in downtown Leamington. Book an appointment today, call 519-995-0057 .



Providing legal advice in both English & Spanish.  
Call 519-326-4878 for more information.



**T H E B R A N D I N G L O F T**

An active imagination and lifestyle combined with an entrepreneurial drive.  
[amy@brandingloft.com](mailto:amy@brandingloft.com)



## **Statement of Revenues & Expenditures**

---

### **Report to the Members**

The accompanying financial statements of the South Essex Arts Association which comprise the statements of the financial position as of December 31, 2017 have been externally audited by Hicks, MacPherson, latona, Driedger Accountants (HMID).

---

### **Board of Director's and Treasurer's Responsibility for the Financial Statements**

The SEAA Treasurer is responsible for the preparation and fair presentation of these financial statements as approved by the Board of Directors in accordance with Canadian accounting standards for not-for-profit organizations, as shown herein and prepared by HMID Accountants.

---

### **Opinion**

In the Board's opinion, the financial statements present fairly, in all material respects, the financial position of the South Essex Arts Association as at December 31, 2017 and the results of its operations and its cash flows for the year ended December 31, 2017 and in accordance with Canadian accounting standards for not-for-profit organizations.

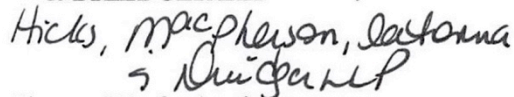
## NOTICE TO READER

On the basis of information provided by management, we have compiled the balance sheet of South Essex Arts Association as at December 31, 2018, and the statement of revenue and expenses and net assets for the year then ended.

We have not performed an audit or a review engagement in respect of these financial statements and, accordingly, we express no assurance thereon.

Readers are cautioned that these statements may not be appropriate for their purposes.

**HICKS, MacPHERSON, IATONNA  
& DRIEDGER LLP**



Chartered Professional Accountants  
Licensed Public Accountants

Leamington, Ontario  
April 9, 2018

# South Essex Arts Association

## Balance Sheet as at December 31 (Unaudited)

	2018	2017
<b>Assets</b>		
<b>Current</b>		
Cash	\$ 18,361	\$ 18,717
Restricted funds	20,847	25,481
	<b>\$ 39,208</b>	<b>\$ 44,198</b>
<b>Net Assets</b>		
Net Assets - Restricted	\$ 20,847	\$ 25,481
Net Assets - General	18,361	18,717
	<b>\$ 39,208</b>	<b>\$ 44,198</b>

**South Essex Arts Association**  
**Statement of Revenue and Expenses and Net Assets**  
**for the years ended December 31**  
(Unaudited)

	2018	2017
<b>Revenue</b>		
Exhibits - art	\$ 4,039	\$ 983
Arts at the Marina	10,115	11,891
Exhibits	9,042	1,933
Fundraisers and donations	29,927	4,792
Gift shop	5,518	6,068
Memberships	3,233	3,284
Rental	20,585	18,122
Art - donations in kind	40,030	-
Workshops	2,720	602
Appraisals	350	-
Grants	48,725	58,850
Alcohol sales	455	-
Interest	406	515
HST rebate	2,747	3,294
	<b>177,892</b>	<b>110,334</b>
<b>Expenses</b>		
Artist fees	6,256	-
Appraisals	280	-
Arts at the Marina	3,108	3,318
Exhibits	-	136
Fundraisers and donations	24,871	-
Gift shop	5,864	5,091
Office	8,695	11,450
Repairs and maintenance	6,975	2,910
Miscellaneous	395	3,067
Art purchases and donations	44,680	500
Advertising	1,274	1,554
Utilities	10,201	9,079
Insurance	3,178	2,468
Wages	61,240	60,836
Bank charges	1,223	1,127
Alcohol purchases	833	-
Security	1,020	1,938
Workshops	1,764	-
Professional fees	1,025	1,000
	<b>182,882</b>	<b>104,474</b>
<b>Excess Revenue Over Expenses for Year (Expenses Over Revenue)</b>	<b>\$ (4,990)</b>	<b>\$ 5,860</b>



**South Essex Arts Association**

**Statement of Net Assets  
for the years ended December 31**

	Net Assets		2018		2017	
	General	Restricted	Total Net Assets		Total Net Assets	
Balance, Beginning of Year	\$ 18,717	\$ 25,481	\$ 44,198	\$	38,338	
Revenue Over Expenses (Expenses Over Revenue)	(356)	(4,634)	(4,990)		5,860	
Balance, End of Year	\$ 18,361	\$ 20,847	\$ 39,208	\$	44,198	

## **South Essex Arts Association**

### **Notes to Financial Statements for the years ended December 31 (Unaudited)**

---

#### **1. Incorporation**

The company is incorporated without share capital under the laws of the Province of Ontario.

#### **2. Permanent Collection**

Donations to the collection during the year included seven works of art totalling \$40,030.



Your Interest and Support in the *South Essex Arts Association* helps build a richer and brighter community. Thank you!



The LAC is a proud member of the OAAG offering reciprocal benefits to over 80 institutions. [www.oaag.org](http://www.oaag.org).



The LAC is an official location where the Cultural Access Pass card can be validated for new Canadian Citizens.



The LAC is a not-for-profit organization reliant on community support.



The LAC is a member of Volunteer Canada and has adopted their code and we are committed to demonstrating our value in volunteerism.



The SEAA/ LAC recognizes the generous support of the Municipality of Leamington and the Southpoint Sun.