



Create  
Sustain  
Celebrate

# ANNUAL REPORT 2021





# COVID-19 Closure



**COVID-19**  
**VISITING**  
**+ PROTOCOLS**

In January of 2021, the Leamington Arts Centre was once again forced to close its doors to the public due to the COVID-19 pandemic.

This report details the activities we were able to accomplish working around COVID-19 restrictions.







# Table of Contents

*Graydon Dyck: from the permanent collection, 2021*

4	About the LAC		
5	About the SEAA Mission Statement Values & Vision Statement	27	Virtual Gallery
6	Message from the Chair	28	Education Programs
7	Message from the Director	29	ART ALIVE! Gallery
12	Board of Directors Staff & Volunteers	30	Facility Improvements
13	Volunteer Program	31	Market Place
14	Volunteer Internship Program (VIP)	32	Art Supply Shop
15	Canada Summer Jobs	34	Permanent Collections
17	Donors, Sponsors, Members & Supporters	35	Notable 2021 Acquisitions
19	Corporate Sponsors & Partners	39	Virtual Collection
20	Exhibitions	40	Accolades & Professional Services
21	2021 Exhibitions	41	International Society of Appraisers
23	Community Gallery + Meeting Space	42	Training and Development
24	2021 Events & Programs	43	Visitor Statistics
25	Arts @ The Marina	44	Venue Rentals
26	A Signature Christmas	46	Statement of Revenues & Expenditure
		53	Contact & Credits



## ABOUT THE LAC

The Leamington Arts Centre (LAC) is a public, not-for-profit arts centre with a focus on exhibiting visual arts and developing arts and culture programming.

The LAC was established as the South Essex Arts Association in 1971 with the mandate to create, sustain and celebrate the arts. Over the years, the LAC has developed into a cultural pillar for uptown Leamington and a regional arts and culture destination. Supported by the Municipality of Leamington, donors and its members, the LAC is a 10,000 square foot facility comprising of four exhibition spaces, a market place artist market, café and wine bar, an art supply store, an education studio and meeting spaces.

The LAC is an award-winning organization known for its wide range of activities, and emphasis on community and local programming alongside ancillary events. The LAC presents a changing calendar of up to 40 diverse exhibitions each year and is home to the notable Henry collection and the LAC permanent collection, collectively comprising of over 600 Canadian, international, historical, and contemporary works of art.

Distinguished for offering complimentary visitor admission and programming, the LAC is committed to facilitating access and stimulating the appreciation and understanding for visual arts and relevant cultural topics.



## **MISSION STATEMENT**

The South Essex Arts Association is dedicated to creating and sustaining a celebration of the human spirit through the nurturing of the arts within our community.

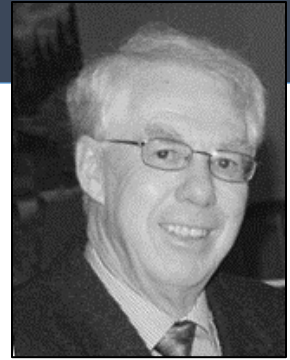
---

## **VALUES & VISION STATEMENT**

The South Essex Arts Association, in partnership with the various art mediums and other disciplines within the arts culture, promotes, fosters and stimulates the appreciation of the arts. Through artistic events and exhibitions with a special focus on the work of local artisans, SEAA assists in preserving all forms of art within the community.



# Message from the Chair



In some ways 2021 was a “write-off”, but in other respects it was a banner year.

First, the year was the 50<sup>th</sup> anniversary of the South Essex Arts Association (SEAA) but because of COVID-19, all the events associated with that celebration had to be delayed or cancelled.

What was the covid impact; the gallery was closed for shows from January to August. The art supply entity was open for curbside pickup but that was it for those months. The closure did provide the LAC board with time to work on its strategic plan, a donation policy and a host of other issues that still required mainly “virtual” meetings. Our gallery director, Chad Riley also got the “virtual” gallery tour up and running.

Of course, what was almost unbelievable about 2021 was the income derived from a myriad of sources. The total was just over \$260,000. To steal a quote from someone - “don’t tell people how to do things” discuss what’s needed and “let them surprise you with their results.” When it comes to funds, Chad is a little bit of miracle worker, along with being a great gallery planner and director. I also thank Sharon Suitor who has stuck with us diligently through the years.

The municipality has been a steadfast supporter of the LAC and we certainly want to dovetail more with their visitor aspirations.

Accolades also go to the board of directors who maintain their interest and involvement in the art endeavours in South Essex.

I am certain the years will only get better.

Mike Thibodeau

Chair, South Essex Arts Association



# Message from the Director/Curator



As the Annual Report will show, 2021 was clearly another year marked with many an asterisk. In 2020 with the start of COVID-19 and business closures, programming cancellations and continually trying to adapt and sustain through the unknown it was a fearful and uncertain time. As the year closed out, hopes for a brighter and more “normal” 2021 were anxiously awaited.

However, that did not occur and, in-fact, 2021 for many proved to be even more challenging as the pandemic persisted. New industry specific restrictions for galleries and museums meant that the gallery portion of the LAC was forced to close its doors to the public and to suspend all in-person activities. This began mid-December 2020 with the sudden shutdown of the Christmas Artist Market, then with the exception of one-month when the Member’s exhibit and Amateur Photography Contest were held, this closure continued until August 2021.

While approximately seven months of the year was a period of solitude from our valued patrons, the LAC board and staff worked diligently to sustain the LAC and plan for brighter days.

Through generous public donations, sponsorships and a variety of government sources the LAC was able to accomplish much behind the scenes. Looking back at 2021 in review, despite all and in very unconventional ways, it was a very prosperous and successful year.

To highlight the accomplishments and focus on the positive, financially the LAC saw a 26% increase in revenue, a defining factor in the LAC’s capabilities. With increased funds, once all the fixed organizational expenses were covered, more funds were available for development and growth of the organization; and that’s just what the LAC achieved throughout 2021.

## **Exhibits & Events**

The exhibition season was far from a normal complete year with only featuring twelve in-person exhibits of a standard 30+ exhibition season.

Despite this, a successful Impact Grant through the WindsorEssex Community Foundation enabled the LAC to create a new COVID-friendly *Virtual Gallery*. Through 360-degree cameras and specialized software, physical programming was transformed to a digital platform. The funding was used to develop 3-D interactive, self-guided virtual gallery tours as well as an online accessible art database of the LAC collections. During the LAC closure the *Virtual Gallery* became the primary means to keep the public in touch with the LAC and the exhibits.

One of the more notable community exhibitions for the year (which was held entirely virtual) was the *23rd Annual Juried Student Art Show*. The exhibit filled all three of the exhibition spaces on the main floor with 127 works by 50 students, from 10 secondary schools all over the county. With thanks again to the participation and interest of local student artists, their devoted teachers, parents, through the sponsorship of the Rotary Club of Leamington and the Kiwanis Club, the exhibit was made possible. 21 student artists took home a total of \$2,300 in prize money.

The highly regarded *8x10 Amateur Photo Contest* had a great response despite COVID, with 149 photo entries in the 3 categories of Abstract, Architecture and Weather. Thanks to our generous sponsors Speedprint, who offered printing and canvas wrap gift certificate prizes and Framing by Anna who meticulously completed the matting once again and donated a custom framing gift certificate to the People's Choice winner. The exhibit had to be postponed twice, but was eventually open for in-person visitation in a smaller space.

In response to COVID-19, the *Together & apART* exhibition was designed to feature works created in isolation during the pandemic which sought to explore how together, we turn to art. Artists were invited to submit work drawing on themes such as loneliness and isolation, community, relationships, social distance, or anything that embodies what they have experienced during these unprecedented times. Through this exhibit, artists showcased how creative expression allows us to connect not only to ourselves, but to one another, bringing us together even while apart.

The 4th annual *WFCU Painting Competition + Exhibit* saw an increased response with 88 entries in total from artists in 13 different cities and towns from across the region. Artists were supported with \$1,300 in cash prizes.

The principal fundraiser and event, *Arts @ the Marina* was again cancelled, however readapted to become an indoor event. *Arts @ the Marina: in the gallery* was the reopening launch exhibit in August after a seven month in-person provincial closure. The event proved to be very well received by artists and the public. With all spaces filled and \$3,500 in sales it was a welcomed vital sign.

After the huge success of the Mill St. Markets in 2019, then the cancellation in 2020, attempts for 2021 Markets in partnership with the Municipality were discussed, but just not feasible due to COVID public health concerns and wavering restrictions.

Diverse exhibits, *Celestial Wonders* from Royal Astronomical Society of Canada, Windsor Chapter, *Through the Years: Southpoint Sun*, *Believe: Tim Roelens*, and *Recent and Retro: Stephen Romanow* completed the possible exhibits for the year.

And, *A Signature Christmas* indoor artist market finished the season. It was again an excellent event featuring 17 artisan displays; also an increase over the previous year, attracting gift seekers from all over the area. \$3,500 in sales helped to support struggling artists during COVID and aided the LAC.

## **Grants & Fundraising**

During the public closures, grant research, writing and program development work became a significant focus to ensure the sustainability of the LAC. A wide variety of grants and subsidies were sought from all levels of government and agencies, many directly targeted for COVID-19 impacts and recovery. \$84,274 in grants were received in 2021 which ranked as the highest revenue category. In addition, another \$44,040 in subsidies were received. Grants & Fundraising combined saw an increase of 35% over 2020.

The Municipality of Leamington again was the main supporter of the LAC, with a community grant, in addition to the use of the facility and a municipal budget for repairs and maintenance. This vital support is at the core of funding for LAC operations, community arts programs and services for residents and tourists.



Further COVID adaptations came with funding from the Canada Summer Jobs grant which supported dedicated staff time to develop an online ecommerce Art Supply Shop. Through the course of two months, a dedicated sub-domain website, [shop.learmingtonartscentre.com](http://shop.learmingtonartscentre.com) was designed and built, the entire art supply shop inventory system updated and connected to the ecommerce site. This endeavor now enables artists to browse, search and shop the entire art supply inventory at the LAC directly from home, complete with photos, member discount codes, purchase options and curbside pick-up.

The LAC also received an Uplift grant from the Uptown BIA to have designed and installed etched glass window vinyl on four primary windows along Mill St. The designs enhance the overall appeal of the facility, while also promoting some of the many activities at the LAC from the Market Place, education programs, and the Art Supply Shop.

### **Donors, Members, Volunteers & Supporters**

It is by way of the generous support from donors, members, volunteers and supporters that the LAC has a thriving purpose. Support by way of individual and corporate membership was incredibly strong in 2021 with \$82,141 in donations and \$3,428 in memberships, topping the previous year with a 35% increase in public support.

In 2021, the LAC was pleased to announce the sponsoring and naming by Mr. Donald Waffle and family of the ART ALIVE! gallery space. Mr. Waffle, a resident of Leamington and a long-time member and supporter of the Leamington Arts Centre is a local artist whose works focus on Canadian culture. The LAC is proud to acknowledge the sponsoring of one of its exhibition spaces with a donation of \$15,000 and to accept several works by Mr. Waffle into its collection. The works will be featured annually in the sponsored space with an exhibition as part of a 5-year agreement.

Through the WindsorEssex Community Foundation, the Honey Family Foundation also gifted the LAC with a \$15,000 donation to support resilience through the pandemic. The funds were later decided to also be invested in the gallery naming rights program to renovate the 2nd floor community gallery + meeting space. Pre-covid this space served as a gathering space five evenings per week to local groups and during the day served as a gallery space. The funds will be used in 2022 to fully renovate this community space as an investment into future programs and services.

Mr. Jackson, former business owner in uptown Leamington surprised the LAC at the year-end with a \$25,000 non-restricted donation. The highest single donation received on record, Mr. Jackson's generous gift enabled the LAC to commit extra funds to staff resources, and to securely move forward with facility enhancements and equipment purchases used for public programs.

Susan Ross also surprised the LAC with a very generous gift to sponsor the main floor kitchenette. Susan and family, Marg and the late Don Ross have been outstanding supporters of the LAC for decades. The funds received will be used to upgrade the old kitchenette to better serve guests at public and private events.

The Annual Appeal and visitor donation were again well supported by the public and contributed to the financial success for the year.

Notable artwork donations in 2021 include 9 large-scale wax pencil drawings by Leamington native, Graydon Dyck gifted to the LAC collection from Mr. Bob Ceh of Wasaga Beach Ontario. The works include vintage automobiles and iconic celebrities.

The Southpoint Sun continued to support advertising initiatives by sponsoring a weekly newspaper ad to highlight programs in exchange for the gallery naming rights. Other annual sponsors, to mention a few, Speedprint, Custom Framing by Anna, WFCU Credit Union, The Rotary, Kiwanis and Lions Clubs, all continued their support to specific exhibits and events.

Since 2018, Sally LaPla and Chao Zhao each have contributed over 250 hours of regular volunteer service in the areas of Docent + Administrative Assistants and Facilities + Events Assistants. These dedicated volunteers have significantly aided to the success and ongoing operations of the LAC. The additional support of many other volunteers as listed in the Annual Report also significantly contributed to the workforce, making programs and events possible.

The SEAA/LAC volunteer Board of Directors saw a few changes with the departure of Vice Chair Sheila McBrayne and member at large, Maria Jose who both moved out of the region. Mike Mastronardi stepped up as the new Vice Chair.

The dedicated group of Board members remained strong and did not waiver in their guidance through the pandemic. Faced with many unprecedented COVID-19 policies and decisions to be made, often challenging and uneasy, the Board collectively persevered. However, it is their mutual wisdom and trust that is most notable. Often presented with outside-the-box and out-on-a-limb proposals, the Board continually grants the latitude and birth needed to attempt and evolve, to then let flourish new ideas. This confidence enables the freedom for the LAC to grow, and most importantly for it to adapted during this pandemic.

And I would be remiss if I did not mention our very dependable, attentive, and patient Visitor Services and Programs Coordinator, Sharon Suitor. Sharon started with the LAC only a few weeks before the pandemic began in 2020. Through nearly two years of being upside down and backwards, faced with unconventional training and varying schedules, Sharon found her way and bloomed as an integral part of the LAC team. With changes in the organizational flow and refocusing staff efforts, Sharon is always willing and able to adapt. Her skills aiding in the development and delivery of programs and being the front-line worker at the desk have afforded time for me to direct attention to crucial areas such as grant, sponsorships, donations, finances, and long-term goals of the organization, with the trust and reassurance that many of the day-to-day activities on-site are in good hands.

With the extra fund in 2021 the LAC was also able to hire a part-time Visitor Services and Gallery Attendant to tend to visitors on the weekends and keep up gallery appearances. The extra staff is a much-needed relief and increases the organizations capabilities.

### **Education & Learning**

While the LAC strives to enrich our community's understanding and appreciation for the arts and culture and assisting to enhance skills and talents by providing a variety of art education programs, COVID-19 group gathering, gallery and museum restrictions made education programs non-existent throughout 2021.

The *MESH: artist network meetings*, and all children and adult classes were suspended. Attempts at the popular *Corks & Canvas* wine and paint nights were attempted but could not come to fruition. Online virtual instructors were actively sought but with much uncertainty and the physical nature of art making, instructors, programs and students could not be secured.

### **Facility**

How to strategically utilize extra funds and reinvent spaces for enhanced visitor experience upon the return to in-person visitation was continually reviewed throughout the year.

Increased consideration was put on the facility with Municipal funding for exterior work and a new LED sign to come in 2022 and beyond.

2021 was a year to poise a wide range of capital projects to come. Stay tuned for many facility improvements in 2022 with the new community gallery + meeting space, a new kitchenette, an exciting banner project, an outdoor programming area, a community arts mural and more.

### **In Summary**

2021 marked the LAC's 50th year, and while many celebrations could not take place due to COVID all ducks are in a row for a grand year full of celebration in 2022. Despite all challenges, the LAC had an extraordinary year marked with growth and strength in development and stability in its finances, which was more than could have been expected entering another pandemic year.

It is for these reasons and many more that the LAC was a finalist for the 5th year in a row for *Best Art Gallery* in the Tourism Windsor-Essex Pelee Island's *Best of Windsor-Essex* annual awards.

And it is with thanks to our many valuable donors, sponsors, members and general supporters that I am proud of the work that has been accomplished and I am pleased to present the 2021 Annual Report.



Chad Riley, MFA, ISA  
Director/Curator





## Board of Directors, Staff & Volunteers

### **CHAIR**

Mike Thibodeau

### **VICE CHAIR**

Mike Mastronardi

### **TREASURER**

Katherine Albuquerque

### **SECRETARY**

Jan Bateman

### **EX-OFFICIO**

Tim Wilkinson

Derek Friesen

Maria Jose (Jan – Aug)

Mike Mastronardi

Jill Nicholson

Mary Jane Nohra

Shelly Quick

Arlene Sinasac

### **DIRECTOR/CURATOR**

Chad Riley

*CELESTIAL WONDERS: Royal Astronomical Society of Canada  
Windsor Chapter, 2021.*

### **PROGRAMS COORDINATOR + CURATORIAL ASSISTANT**

Sharon Suitor

### **VISITOR SERVICES + GALLERY ATTENDANT**

Savannah Staddon (August 28 – December 30)



*SHOOTERS PHOTOGRAPHY CLUB: member exhibit, 2021*

The LAC is a member of Volunteer Canada and has adopted their code and we are committed to demonstrating our value in volunteerism.

**Who can volunteer?** Everyone! Volunteers at the LAC are as diverse as the art we display and there are many unique opportunities to fit your interests and time. Knowledge of art is not necessary, just an appreciation for art and the enthusiasm to share it with others.

## **Docent + Administrative Assistant**

The Docent + Administrative Assistant will welcome and engage patrons and help them connect with the art and have a memorable visit; inform patrons of current exhibits, upcoming events, classes and LAC activities of interest; conduct tours of the gallery for groups and schools, and utilize techniques of dialogue and inquiry. The docent encourages patrons to participate, ask questions and become informed and enthused about the LAC, its exhibits and activities. As Administrative Assistants, will help with administrative and office duties, fundraising and marketing campaigns, mailings, data entry and record keeping; other clerical work such as answering the phone and directing class and inquiries, taking messages and other basic office related tasks.

## **Facilities & Events Assistant**

The Facility + Events Assistant will assist with preparation, coordinating and set up of programs and activities at the LAC, such as exhibit installation and de-installation, artist receptions, LAC private rental events and LAC art classes; assist with facility maintenance.

**A special thank you to our regular weekly volunteers for their ongoing dedication and support. These valued volunteers include: Sally LePla and Chao Zhao.**

Anna Lamarche  
Chao Zhao  
Ella Riley  
Dave Paddick  
Henry Noestheden  
Jessie Riley  
Jill Nicholson  
John Noestheden  
Kathryn Parent  
Kyra Cole  
Laura Douciere  
Mike Marcon  
Noah Riley  
Sally LePla  
Sanja Srdanov  
Speedprint  
Tim Wilkinson

# Volunteer Internship Program (VIP)



University  
of Windsor

## Volunteer Internship Program (VIP) – Visual Arts Internship Placement

In the summer of 2021, the LAC participated in the Volunteer Internship Program (VIP) in partnership with the University of Windsor. The program involves VIP Students volunteering for forty or more hours while participating in professional development activities. These students also receive invaluable career-related experience, which allows them to build upon their existing resume, network with professionals in their field, and leave with a sense of pride knowing that they have given back to the local community.

VIP has been designed with the following educational goals in mind:

- To provide students with access to experiences within the community.
- To develop professional employment readiness skills in students such as accountability, communication, etc.
- To help students develop a network of contacts in the community.
- To assist students in the identification or clarification of career interests and expectations.
- To develop an appreciation for the value of volunteerism among students.
- To teach students how to learn from a variety of experiences.

### **Savannah Staddon**

May 5 – August 11, 2021

While completing her VIP placement, Savannah was responsible for updating the weekly Mailchimp email campaign and updating social media platforms with current highlights from the campaign. In addition, Savannah was also responsible for various digital initiative work, such as editing images for our virtual permanent collection, as well as updating forms and templates to be used for administrative purposes. Savannah was also helpful in updating and maintaining the LAC website with current events and new information.





## Canada Summer Jobs

U21 Members Show + Exhibit, 2021

Each year for the past several years the LAC has been successful at obtaining funding through the **Canada Summer Jobs** Program for employees under the age of 30. Job placements typically range 6-12 weeks, in 2021 the LAC was successful in receiving funding for one additional staff for 10 weeks. This extra staff allowed the gallery visitor hours to increase by 8 additional hours per week with the gallery being open on Sundays for the months of July and August during peak tourism season.

### Digital Initiatives Coordinator (May 19 - July 11)

#### Sharon Suitor

The Digital Initiatives Coordinator aids in the development and delivery of digital initiatives and programs for the LAC. The Digital Initiatives Coordinator is tasked with virtual programming, dissemination of information to online audiences through social media and email campaigns to promote exhibitions, events, programs and services offered by the LAC. The Digital Initiatives Coordinator possess a broad working knowledge of digital technologies, applications and equipment; is well-acquainted with digital resources, strategies, web based platforms, website development as well as design and editing of video and photography content.

*In my position as Digital Initiatives Coordinator, I had the opportunity to create and build an e-commerce website for the Leamington Arts Centre's Art Supply Shop. The experience was both challenging and rewarding as I worked toward integrating a previously well-developed point-of-sale system into a new e-commerce interface. In doing so, I gained a great deal of knowledge into how point-of-sale systems operate both traditionally and through e-commerce methods. In addition, I was able to practice and acquire new skills in web design, website building and customization.*

*The Digital Initiatives Coordinator position also involved creating and curating of an online virtual gallery for the Leamington Arts Centre's permanent collection. The Permanent Collection Virtual Gallery project concerned cataloguing, digitizing and organizing the LAC's private art collection into a visually appealing digital gallery viewable through the LAC webpage. This project allowed me to draw on and expand skills in Photoshop and Adobe applications as well as elements of web design and user-interface design.*

*The Digital Initiatives Coordinator position allowed me to experiment, practically apply, and grow my skills in digital marketing and programming. I am grateful for the opportunity to help facilitate growth and digital expansion for the Leamington Arts Centre.*



## Canada Summer Jobs

*U21 Members Show + Exhibit, 2021*

Each year for the past several years the LAC has been successful at obtaining funding through the **Canada Summer Jobs** Program for employees under the age of 30. Job placements typically range 6-12 weeks, in 2021 the LAC was successful in receiving funding for one additional staff for 10 weeks. This extra staff allowed the gallery visitor hours to increase by 8 additional hours per week with the gallery being open on Sundays for the months of July and August during peak tourism season.

---

### **Visitor Services & Gallery Attendant (VSGA): Savannah Staddon (August 28 – October 30)** **Savannah Staddon**

The Visitor Services & Gallery Attendant (VSGA) is entrusted with effective customer service and cheerful reception at the gallery as well as facility appearances and cleanliness. The VSGA accurately performs, point of sales, clerical duties and as a docent disseminates information in person and online to promote exhibitions, events, programs and services offered at the LAC. The VSGA is a professional, warm, friendly and informative personality that enhances the visitor and patron experiences.



Government  
of Canada

Gouvernement  
du Canada

Canada





8x10 Amateur Photo Contest, 2021

## Donors, Sponsors, Members & Supporters

The South Essex Arts Association/ Leamington Arts Centre seeks donations from individuals as members and donors to support vital programming such as exhibitions, events and education programs. The South Essex Arts Association wishes to acknowledge and recognize the generosity of new and renewing members whose gifts were received in 2021.

### **CHAMPION OF THE ARTS (500+)**

Mary Anne Kazuke  
Allan and Marilyn Scase

### **PATRON OF THE ARTS (250+)**

Bob & Jean Page

### **FRIEND OF THE ARTS (100+)**

Jackie Bruno  
Ann Ducharme  
Trevor Jones  
Shelly Quick  
Karen Repko  
Donald Waffle  
Donna Walton  
Tim Wilkinson

### **NOT FOR PROFIT/BUSINESS (\$50)**

Leamington District Chamber of Commerce  
Ed and Rose Roach  
Nancy Whittle

### **FAMILY (\$40)**

Jan Bateman  
Lloyd Brown-John  
Brenda Dettlinger  
John & Patricia Haynes  
Jim Hunt & Family  
Kathryn & Dave Parent, Paddick  
Della Kasarda & Stephen Romanow  
Lisa & Marcel Simard  
Todd and Sherry Stahl  
Jeff & Susanna Suchak  
Joe and Christiana Tagliapietra  
Layne & Elaine Van Loo  
Marlene Woodrow

### **INDIVIDUAL (\$30)**

Terri Cooper  
Dennis Edmondson  
Clara Howitt  
Linda Hurst  
Laura Kaake  
Hilda MacDonald  
Jim McTavish  
Jill Nicholson  
Heather Niven  
Ann Roberston-Seigel  
Lynda Ruddock-Rousseau  
Arlene Sinasac

### **HONORARY**

Marg Ross

### **LIFETIME MEMBERS**

Dr. and Mrs. Kelley  
George Alles  
Harold Burton  
Harry Enns  
Ken Friesen  
Pat O'Heron  
Penny Belluz  
Phyllis Nelson  
Walter McGregor  
Joel Westlake



# Donors, Sponsors, Members & Supporters

## ARTISTS (\$25)

Robert Affleck  
Katherine Albuquerque  
Barbara Alkemade  
Candace Anderson  
Tara Benson  
Lou Ann Bigley  
Nancy Cassels  
Kinga Chowdhry  
Anthony B. Collings  
Ellen Marie Cooper  
Rick Coote  
Rashmi Dadwal  
Ruth Derkach  
Michelle Dobrin  
Jane Dugan  
Maryelin Enns  
Catherine Anne Fox  
Derek Friesen  
Dorit Girash  
Christine Gryski  
Sandie Gunning  
Carolyn Hardy  
Laurie Hart  
Nora Harvey  
Elizabeth Hebert

Sophie Hinch  
Garry Johnson  
Mary Johnston  
Diane Knight  
Terra Koop  
Aline LaFleche  
Kristina Lauzon  
Helen Lavin  
Sally LePla  
Petro Lopata  
Pavlo Lopata  
Toni MacDonald Wells  
Kelly MacLellan  
Carolane Madla  
Dan Mallat  
Deb Marentette  
Darlene Martens  
Elaine C. Martin  
Rosy McGregor  
Michael Mastronardi  
Joan McNeill  
April Mills  
Arlene Murphy  
Charlotte Murray

Karen Murray  
Patrick Nicholson  
Mike Ondrovicik  
Barbara Pastorius  
Donna Peltier  
Sherrie Piens  
Wallie Pizzuti  
Nancy Platsko  
Gisele Poisson  
Ana-Maria L. Pop  
Valerie Read  
Joan Rieveley  
Tim Roelens  
Sarah Rupert  
Diane Sullivan  
Bill Sutherland  
Irina Teske  
Mike Thibodeau  
Astrid Tobin  
Alan Tomlinson  
Amanda Van Gelder  
Irena Vucajnk  
Isabelle West  
David Wilcox  
Chao Zhao



*The Marketplace: artist market – café- wine bar*

## Corporate Sponsors/Partners

The South Essex Arts Association/ Leamington Arts Centre seeks sponsorships from corporations and other organization in partnership to support vital programming such as exhibitions, events and education programs. The South Essex Arts Association wishes to acknowledge and recognize the generosity of new and renewing sponsors whose gifts were received in 2021.

Albuquerque Accounting  
Aleksander Estate Winery  
Arts Council Windsor & Region  
Art Gallery of Windsor  
ArtBuild Ontario  
Artcite Inc.  
Belle River High School  
Bradt's Butcher Block  
Cardinal Carter  
City of Windsor  
Cowlick Studios  
Crave Family Gill & Pub  
École Secondaire Catholique L'Essor  
Essex District High School  
Essex Free Press  
Friends of Point Pelee  
Heinz Jordan

Hon. W.C. Kennedy Collegiate  
International Society of Appraisers  
Kingsville District High School  
Kiwanis Club of Leamington  
Erie Shores Hospital  
Leamington District Chamber of Commerce  
Leamington District Secondary School  
Leamington Half Century Club  
Leamington Lions Club  
Libro Credit Union  
Lore Computers  
MC Business Solutions  
Ontario Arts Council  
Ontario Association of Art Galleries  
Photography & Framing by Anna  
Rotary Club of Leamington

Sandwich Secondary School  
Security One  
Shooters Photography Club  
South Essex Community Council  
Southpoint Publishing  
Speedprint Ltd.  
TechSoup Canada  
Tecumseh Vista Academy  
The Bank Theatre  
The Municipality of Leamington  
Tourism Windsor Essex & Pelee Island  
University of Windsor  
Uptown Leamington BIA  
Western Secondary School  
Westview Freedom Academy  
Wilkinsigns  
Windsor Endowment for the Arts  
Windsor Family Credit Union





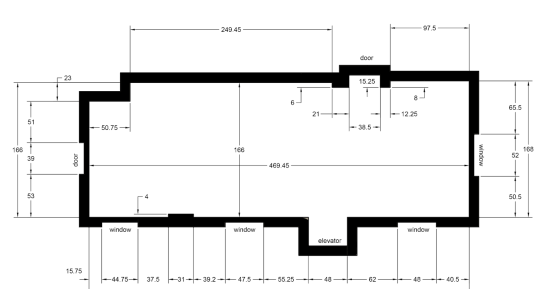
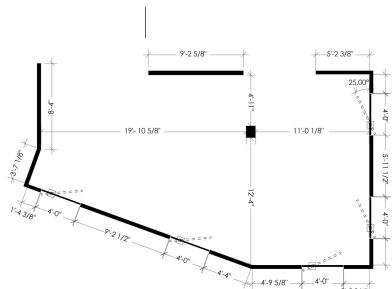
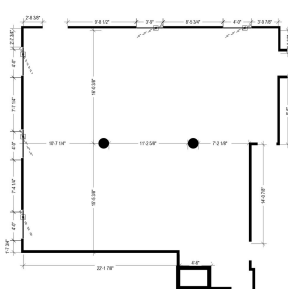
*Recent & Retro, Stephen Romanow, 2021*

## Exhibitions

The LAC is a state-of-the-art gallery which offers three exhibition spaces with over 300 linear feet of continuous wall space and 3000sq/ft of floor space a gift shop, art classes, workshops and meeting spaces. The LAC is one of the area's paramount places to view modern art with an emphasis on local and aspiring artists and artisans.

The LAC takes great pride in the exhibits we feature and the artists we select to showcase. Each season from January through December, the LAC offers up to 40 different exhibits. Exhibitions typically change each month so there is always something new to see from solo artist exhibits, private and gallery collections, themed group exhibits, community clubs, school exhibits and more.

Admission to the LAC is always free, donations are always appreciated. And be sure to join us each month for the new exhibit opening receptions where you can meet the artists, view their works, meet new people, network and collaborate with other creative minds, and share in the enjoyment of the arts. Food and a variety of cocktails are also served from the Market Place bar and café.







*\* Due to COVID-19 and in the interest of public safety, many exhibitions and receptions were cancelled.*

*JURIED STUDENT ART SHOW, 2021*

## 2021 Exhibitions

January 4 – February 28  
LAC CLOSED DUE TO COVID-19

February 17 – February 28

### **GRAYDON DYCK: from the LAC permanent collection**

An exhibition of the LAC's collected works by Canadian artist George Graydon Dyck. The exhibition was made possible through the courtesy of Bob Ceh.

March 4 – March 28

### **8x10: 2021 Amateur Photography Contest**

The LAC is proud to present the 8x10 amateur photography contest. This annual exhibit features nearly 150 striking photographs in the categories of

#### **U21: Members Exhibit + Sale**

The 2021 annual members exhibit and sale celebrates the strength, vitality, creativity and wealth of talent found within the Leamington Arts Centre (LAC)/South Essex Arts Association (SEAA).

#### **LIGHT-VISION-EMOTION: Phos3 Photography**

Kathryn Parent and Dave Paddick are a husband and wife team, life partners and soul mates. Together they publish their fine art photographs under one name, "Photography by Phos<sup>3</sup>".

April 1 – April 25\*

### **(ON VIRTUALLY DUE TO COVID-19 CLOSURE)**

#### **JURIED STUDENT ART SHOW: 23<sup>rd</sup> Annual**

Generously sponsored by the Rotary Club of Leamington and the Kiwanis Club. This exhibition is open to ALL Essex County Secondary Students and features \$2300 in cash prizes including a Future Artist Award and a People's Choice Award.

#### **ART MEMORIES: Ellen Cooper**

Art Memories by Ellen Marie Cooper is an exhibit featuring a collection of various works from Ellen's artistic career, with a particular focus on the beauty of landscapes and flora in the medium of watercolour.



*8x10: amateur photo contest, 2021*

May 6 – July 18 \*  
LAC CLOSED DUE TO COVID-19

July 21 – August 29

### **ARTS @ THE MARINA: Inside the Gallery**

Due to COVID-19, the LAC presents its annual Arts @ the Marina arts & crafts show, only it's INDOORS and for a MONTH! Open to all artists and artisans in any medium; photography, painting, jewelry, literary arts, crafts, woodworking, glasswork, pottery and more.

#### **BELIEVE: Tim Roelens**

Believe in what you see.

The truth is in your eyes.

Feel from deep within thee.

Your soul will tell no lies



WFCU CREDIT UNION: painting competition + exhibit. 2021

## 2021 Exhibitions

September 2 – September 26

### WFCU CREDIT UNION: Painting Competition + Exhibit

The WFCU Credit Union Painting Competition + Exhibit is an incredible opportunity for emerging, mid-career and established artists to present their most accomplished works at the LAC for a chance to win cash prizes. The exhibit's focus is to highlight and celebrate the arts in our region and to offer financial support and an audience for artists.

\$1200 in Cash Prize will be awarded!

Sponsored by: WFCU Credit Union

### THROUGH THE YEARS: The Southpoint Sun

From the debut issue on February 3, 2010, through the world-wide pandemic of 2020-21, the Southpoint Sun has seen many changes, from logo design to distribution area to the development of other products, such as Southpoint Living and Southpoint Creative. Through all of that, the Sun remains Leamington, Kingsville and Wheatley's community newspaper. Let us take you back through what we consider the most interesting front pages we've published over the 500+ issues printed.

September 30 – October 24

### RECENT & RETRO: Stephen Romanow

A curated collection of Stephen Romanow's work throughout his career, with paintings spanning the time of 40 years. This exhibit was made possible thanks to the help and support of the Ontario Arts Council grant.

### TOGETHER & APART: Group Exhibit

Together & apart is an exhibition of works created in isolation during the COVID-19 pandemic that seeks to explore how together, we turn to art. Through this exhibit, we showcase how creative expression allows us to connect not only to ourselves, but to one another, bringing us together even while apart.

October 28 – November 21

### REMNANTS: Stephen Romanow

A sampling of painting from different series in progress. 4 paintings are from the "Black & White" abstract series; 3 from the "Freeze Frames" series; 1 from the "Industrial Abstract" series' 1 from the "Abstrotika" figurative series—erotic (not pornographic) in nature, with a focus on aspects of the painting apart from the figure. 3 of the paintings, which feature women, and "Vinnie's Hat" are what I call "one-off" paintings, not belonging to any series.

### MEMBER SHOW & SALE: Shooter's Photography Club

Have passion for photography? Interested in being involved and gaining some knowledge and experience? See what the Shooters Club members have been up to.

### CELESTIAL WONDERS: Windsor Centre of the Royal Astronomical Society of Canada

The Windsor Centre of the Royal Astronomical Society of Canada is dedicated to the advancement of astronomy since 1945. This is accomplished by stimulating interest and promoting and increasing knowledge of astronomy through public outreach and sharing the wonders of the Universe. And what better way is there to inspire curiosity then through photography and art portraying the beauty the celestial night sky. The exhibit includes amazing Astro Photos taken by members and Astro Art produced by members. Several telescopes will also be on display.

November 25 – December 19

### A SIGNATURE CHRISTMAS: Indoor Artist Market

LAC presents its annual indoor Christmas Arts & Crafts show. Featuring artists and artisans in a variety of mediums, and a variety of gifts for everyone on your list.



A SIGNATURE CHRISTMAS: Indoor Artist Market, 2021





## Community Gallery & Meeting Space

*\* Due to COVID-19 and in the interest of public safety, many exhibitions and receptions were cancelled.*

*TOGETHER & APART: group exhibit, 2021*

As a meeting space, the LAC is proud to provide a gathering place for special events and programs. This space is available to individuals, businesses, community groups and organizations for private social events, educational and business events.

The large community room is the perfect setting for educational programs, seminars, workshops, meetings and conferences. It comes equipped with a 100" projector screen, tables, and seating for up to 50. The community room is available all hours any day of the week including weekends.

March 4 – March 28

### **LIGHT–VISION–EMOTION: Phos3 Photography**

An exploration in the relationship between image and material. The chipboard's rough, unfinished surface works against out preconceived notions of the softness and beauty found in nature's ideal and the material's own pattern is manipulated to reflect and correspond to the patterns found in the natural world.

April 1 – June 27

### **ART MEMORIES: Ellen Cooper (VIRTUAL DUE TO COVID-19)**

Art Memories by Ellen Marie Cooper is an exhibit featuring a collection of various works from Ellen's artistic career, with a particular focus on the beauty of landscapes and flora in the medium of watercolour.

July 21– September 26

### **BELIEVE: Tim Roelens**

A collection of abstract in mixed medium. *Believe in what you see. The truth is in your eyes. Feel from deep within thee. Your soul will tell no lies.*

October 24 – December 19

### **TOGETHER & APART: group exhibit**

Together & apART is an exhibition of works created in isolation during the COVID-19 pandemic that seeks to explore how together, we turn to art. Through this exhibit, we showcase how creative expression allows us to connect not only to ourselves, but to one another, bringing us together even while apart.



*A Signature Christmas, November-December 2021*

*\* Due to COVID-19 and in the interest of public safety, group gatherings and receptions were placed on hold.*

## 2021 Events & Programs

March

### **ANNUAL GENERAL MEETING**

Wed, Mar 11, 6:30pm

Come to our virtual AGM and learn about all the LAC accomplished in 2020 and get a peak at our plans for 2021 and beyond! Also enjoy networking and gathering with other supporters and arts enthusiasts..

August

### **ARTS @ THE MARINA:**

**Inside the Gallery**

July 21- Aug 29

Due to COVID-19, the LAC presents its annual Arts @ the Marina arts & crafts show, only it's INDOORS and for a MONTH! Open to all artists and artisans in any medium; photography, painting, jewelry, literary arts, crafts, woodworking, glasswork, pottery and more.

December

### **A SIGNATURE CHRISTMAS:**

**Indoor artists market**

Nov 25 - Dec 23

LAC presents its annual indoor Christmas Arts & Crafts show. Exhibit and sell your work directly inside our beautiful galleries during this month long "gift shop" style exhibition with a warm Christmas setting.



*A Signature Christmas, 2021*



*Arts @ the Marina: Inside the Gallery, 2021*





*Arts @ The Marina: Inside the Gallery, July-August 2021*

## Arts @ the Marina: In the Gallery

It was with disappointment that due to COVID-19 the Leamington Arts Centre had to make the challenging decision to cancel the 28th annual Arts @ the Marina. However, in its place we decided to introduce Arts @ the Marina: In the Gallery.

Arts @ the Marina: In the Gallery officially opened July 21<sup>st</sup> and went until August 29<sup>th</sup>, 2021, our first exhibition after the second COVID-19 closure of the year.

Visitors were invited to stroll through our main floor galleries while enjoying a wide variety of arts + crafts from vendors all over Windsor-Essex.

### Featured Exhibitors:

- The Beadiva (Jewellery)
- Earth and Fire (Studio Pottery)
- Carolane B. Madla (Paintings)
- Stephen Romanow (Paintings + Cards)
- Transformed Treasures (Jewellery + More)
- Ken Friesen (Paintings + Collage)
- Nora Harvey (Paintings)
- Grace Enns (Printed Illustrations, Cards)
- Marwell Creations (Woodworking)
- Phos3 Photography
- A Slice of Nature (Woodworking)
- Helen on the Farm (Paintings, Cards)
- Chad Riley (Paintings, Prints)



*Betty McCready, Arts @ the Marina: Inside the Gallery, 2021*



*Grace Enns, Arts @ the Marina: Inside the Gallery, 2021*



*Various, Arts @ the Marina: Inside the Gallery, 2021*





*A Signature Christmas: 2021*

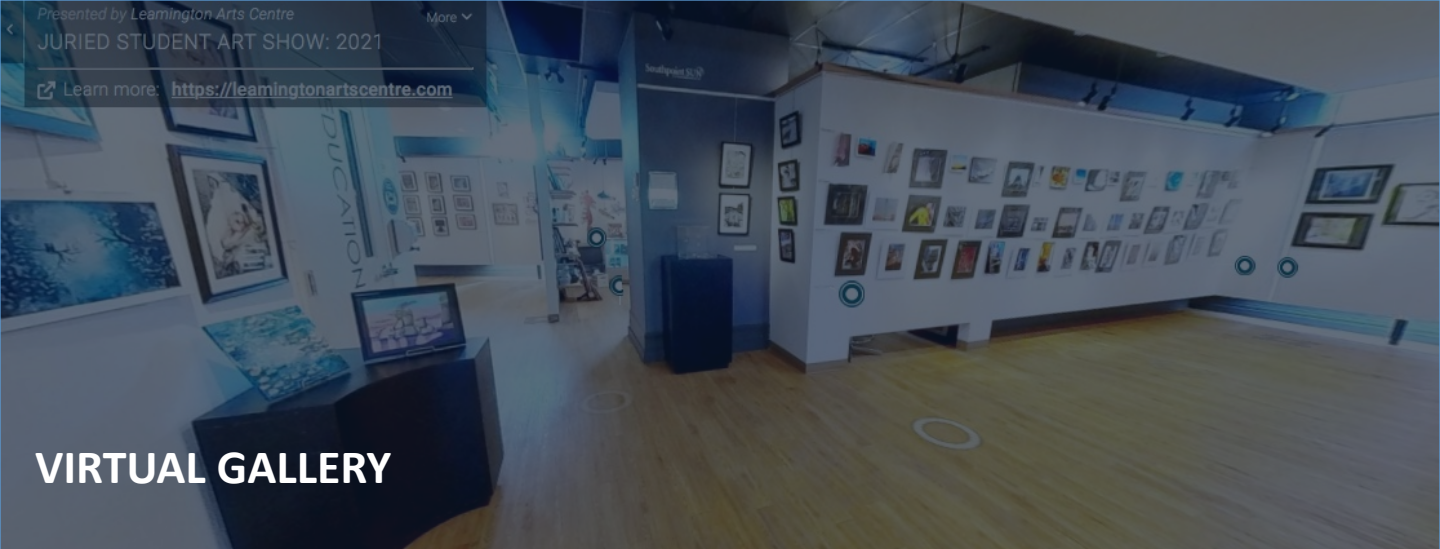
## A Signature Christmas: indoor arts + crafts show

From November 24 – December 19, the LAC presented A Signature Christmas: Indoor Artist Market. The annual arts and crafts show offered unique and beautiful gifts from 14 local vendors. The entire main floor galleries were filled with handmade creations—from woodworking and original paintings, to books and jewellery.

Featured vendors:

- Arlene Murphy
- A Slice of Nature Woodworking
- Carly Butler Verheyen
- Carolyn Hardy Surrealist Artist
- Doug's Woodcraft
- Naturally Infused
- Norma Joan Jewellery
- Transformed Treasures by Betty McCready
- Words & Pictures by Christine Gryski
- Permanent Pallets
- Phos3 Photography
- Sherrie Piens
- Germaine Thibodeau
- LRRR Designs





## VIRTUAL GALLERY

With origins in 2020, the Virtual Gallery is a new digital initiative which features 3-D virtual tours of the LAC galleries and select exhibitions. With the support of the Windsor-Essex Community Foundation, the goal of this program is to expand the LAC's current physical programming to virtual students and anyone in the community unable to visit in person due to COVID-19, disability, transportation, distance or other barriers.

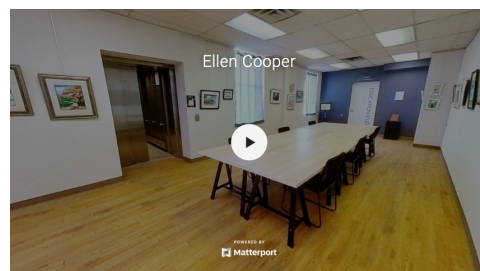
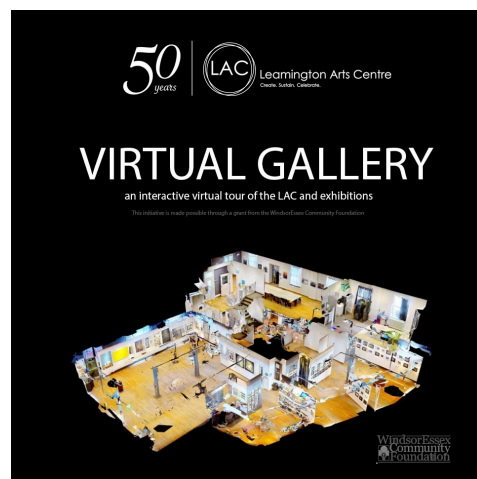
In 2021, 2 exhibitions were featured on our Virtual Gallery due to COVID-19 closures: The 23<sup>rd</sup> Annual Juried Student Art Show and Art Memories by Ellen Cooper.

### JURIED STUDENT ART SHOW: 23<sup>rd</sup> Annual

This exhibition was open to ALL Essex County Secondary Students and featured \$2260 in cash prizes including a Future Artist Award and a People's Choice Award. This annual exhibition was generously sponsored by the Rotary Club of Leamington and the Kiwanis Club.

### ART MEMORIES: Ellen Cooper

Art Memories by Ellen Marie Cooper was an exhibit featuring a collection of various works from Ellen's artistic career, with a particular focus on the beauty of landscapes and flora in the medium of watercolour.







## Education Programs

*Education Studio at the Leamington Arts Centre*

The LAC strives to help enrich our community's understanding and appreciation for the arts and culture while assisting to enhance skills and talents for both youth and adults. Come join us and explore your artistic side. Develop your skills and have fun in our relaxed lower-level studios. Our teachers offer a broad range of adult and children's classes suited to all levels and areas of interest from acrylic, oil, watercolour and encaustic painting, drawing, printmaking as well as specialized individual one on one classes and holiday and seasonal art camps for children.

*\* Due to COVID-19 and in the interest of public safety, all in-person education programs were cancelled.*



### WANTED: VIRTUAL ARTS INSTRUCTORS

The LAC is seeking art instructors (in-person and virtually for one-time, series of classes, paint/draw along, pre-recorded step-by-step, crafts, etc.) for children and adults.

If you have an idea of how to bring art into your community through instruction, let's discuss it! Make your own hours, set your own rate of pay, get free advertising and have a great place and good partners with whom to do it!

Interested?  
Contact [director@leamingtonartscentre.com](mailto:director@leamingtonartscentre.com)



## Gallery Changes – ART ALIVE! Gallery



In 2021, The LAC was pleased to announce the sponsoring and naming by Mr. Donald Waffle and family of the new ART ALIVE! gallery space. This is the second space to be sponsored at the LAC. The Southpoint Sun was the first who came on in 2017 as a part of the gallery's sponsorship naming rights program.

Mr. Waffle, a resident of Leamington and a long-time member and supporter of the Leamington Arts Centre is an active local artist whose works focus on First Nations and Canadian culture. The Leamington Arts Centre is proud to acknowledge the sponsoring of one of its four exhibition spaces and to accept several works by Mr. Waffle into its collection to be featured annually in an exhibition as part of the 5-year agreement. The first exhibit is scheduled for June 2022 and will feature iconic portraits, Canadian landscapes and a replica created by Mr. Waffle of the MARK IX Spitfire flown by F/L Gerry Billings in WW2.

*"I'm excited to become an important supporter of Leamington Arts Centre. This gallery will now carry the name of my choice, a name taken from my website, "art alive!" My own artworks will be cared for, and regularly displayed. This will enable art viewers to study bits of Canadiana through my paintings: portraits that include many extraordinary Canadians and first nations; and unique landscapes from across Canada, such as the view from a WestJet high above the golden down breaking over the wall of the Rockies. I'm pleased and proud that young and old from this area and beyond, will find in this gallery the opportunity to study and be inspired by the work of so many talented artists."*

- Donald Waffle

"Part of our art acquisition mandate is to collect works of Canadian and local significance, and those works created by our members and residents makes them even more important to our local culture and history," states Chad Riley Director/Curator of the LAC. "It is our honour and privilege to accept this generous gift from Mr. Waffle and his family which will aid in our financial sustainability. We gratefully welcome these works into our collection to help create a legacy for Mr. Waffle and his art."

# Facility Improvements

## Windsor Essex Community Foundation (WECF) Sponsorship

The Leamington Arts Centre (LAC) is proud to announce the sponsoring and naming by the Honey Family Foundation and the Windsor Essex Community Foundation (WECF) of the future upgraded Community Gallery + Meeting Space at the LAC.

At the Municipality of Leamington Outdoor Courtyard in August 2021, the LAC was presented with a gift of \$15,000 from the Honey Family Foundation/WECF. These funds along with an investment of the LAC's own will be used to fully renovate the second-floor community gallery and meeting space in 2022.



## Susan Ross Kitchenette

In December 2021, the LAC received a very generous donation from Leamington resident and long-time LAC supporter, Susan Ross. The funds received will go toward the renovation of the main floor kitchenette to be used by the LAC for hosting receptions, special events, and venue rentals.

As a result of the donation, the main floor kitchenette is to be renamed "Susan Ross Kitchenette." The renovations to the space began in January of 2022.

## 2021 Market Place: artist market - café - wine bar

The Marketplace is a reinvented gift shop, café and wine bar space featuring artwork exclusively by its members. This unique and one-of-kind space focuses to highlight the originality, quality, craftsmanship and creativity found only in works bearing an artist's signature.

The Market Place café and wine bar also highlights our local wineries, breweries and distilleries. A selection of coffee, tea, soda, water, local wines, craft beers and sprits are served daily and during special events. The Market Place is the perfect place to stop in, sit, relax or meet, drink and shop for creative and signature gifts. For special occasions and for yourself, no gift is better than handmade and local. To yourself or to someone special, give the gift of art.

### Market Place Exhibitors

Alex Klassen  
Andrea Mercier  
Anna Lemarche  
Astrid Tobin  
Biblioasis  
Brandy Martin  
Brian Sweet  
Carolyn Hardy  
Chad Riley  
Chao Zhao  
Chris Basden  
Joe & Christina Tagliapietra  
Claudette Schiller  
Coleen Thibert  
Cris Kohl  
Darlene Martens  
Dave Paddick

Deborah Cameron  
Dorit Girash  
Eric Naylor  
Elizabeth Hebert  
Friends of Point Pelee  
Helen Lavin  
Irina Teske  
Janal Koenig  
Jim McTavish  
Jim Oglivie  
Jim Stein  
Joan Rieveley  
Joel Westlake  
Justin Latam  
Karen Ross  
Karen Scott  
Kathryn Parent

Ken Friesen  
Layne & Elaine Van Loo  
Louise Vermeiren  
Lynda Ruddock Rousseau  
Marg Ross  
Mary Newland  
Michelle DeLacey Bruner  
Michelle Dobrin  
Nelcy Martinez  
Patti Wheeler  
Pauline Ledoux  
Pelee Music  
Permanent Pallets  
Peter Olsen  
Petroglyph Soaps  
Rashmi Dadwal  
Rick Coote

Ron Vermeiren  
Rosalind Knight  
Ryan Horvath  
Sandi Collins  
Sandie Gunning  
Sarah Rupert  
Sherrie Piens  
Susan Dupont Baptista  
Terra Koop  
Terry Dolle  
Todd & Sherry Stahl  
Tom Omstead  
Vesna Bailey  
Vicki McKay







## Art Supply Shop

### ONLINE ART SUPPLY SHOP LAUNCH

In August 2021, The LAC launched our very own online art supply shop. Now shoppers can browse our full inventory from the comfort of their homes, make purchases with the click of a button, and drop by the LAC whenever convenient to collect their items.

Also available on the shop website are LAC gift certificates, LAC Memberships, and LAC merchandise.

Visit [shop.learmingtonartscentre.com](https://shop.learmingtonartscentre.com) and check out what we have to offer.







## Art Supply Shop

### 2021 ART SUPPLY SALES

The Leamington Arts Centre held two Art Supply sales in 2021.

**ART SUPPLY SHOP HOURS**  
Wed - FRI 10-5  
Sat + Sun 11-4



#### August 2021

To promote the launch of our new e-commerce website, we offered 15% off all purchases made online from July 29 – August 12.

#### December 2021

Art supplies make great Holiday gifts! We offered a spend more save more sale from 10-25% off total purchases.



## Collections

*The Henry Collection, the Municipality of Leamington*

### The Henry Collection: Historic Art & Artifacts

The Henry Collection, donated by the Henry Family, is a permanent collection of the Municipality of Leamington and is under the care of the Leamington Arts Centre. The Collection features various art and artifacts collected from all over the globe including works from far East Asia and North America.

### LAC Collection: Local and Culturally Significant Artwork



Jeet Aulakh  
*Namo Ek Yonge, 2010*  
Oil on Canvas

The SEAA/LAC's collection is of great pride amongst its staff, members, and constituents. We take seriously our mission to enrich culture through the collection and preservation of art. Since its founding in 1971, the SEAA/LAC has acquired hundreds of works of art, collecting in the areas of Canadian and international historical and contemporary art.

The collection has been built both through donated gifts and considered purchases. Approximately 90% of gallery acquisitions come from private donors—often dedicated collectors looking for a permanent home for their works where they will be appreciated, cared for, and put on display for others to enjoy. Artists also donate their work, such as Jeet Aulakh's *Namo Ek Yonge*; 2010 oil on canvas. It is because of the generosity of these donors that the SEAA/LAC enjoys the position it holds as a collecting institution.



## New Acquisitions: LAC Collection

**George Graydon Dyck** was born in Leamington on September 15, 1946 and died in Winnipeg, Manitoba on December 19, 2011. Graydon was an artist whose work was shown in Toronto, New York, Los Angeles and Winnipeg. He is best known for painting vintage cars and movie stars. Graydon's artistic skills were evident from a very young age and in 1967, he moved to Winnipeg to attend the School of Fine Art at the University of Manitoba. It was there that he met the love of his life Judith (nee Wolinsky). They explored many art scenes over the years, living in Toronto, New York, Los Angeles and Winnipeg.

Over his 45 year career, he did thousands of paintings and created hundreds of car and figure movement sculptures. His paintings are in many private and public collections across Canada and the U.S. In 1984, he was commissioned to paint a mural of nudes and figure movements in the women's powder room of the famous Limelight Nightclub in New York. He was known for being a painter of Cars and Stars and had many a muse, namely 1940s American cars and a fine group of ladies, including Diana Ross, Marlene Dietrich, Marilyn Monroe, Tallulah Bankhead, Bette Davis, Greta Garbo and Joan Crawford. He also painted many others, including Martin Luther King, Jr., Winston Churchill and Golda Meir. Graydon loved music, especially Motown and saw many of the greats perform in Detroit and Chicago in his teenage years.

### Stude Baker 40's

Graydon Dyck  
Acrylic with Wax Pencil on Paper  
Gift of Bob Ceh, Wasaga Beach, ON

### Cord's 30's

Graydon Dyck  
Acrylic with Wax Pencil on Paper  
Gift of Bob Ceh, Wasaga Beach, ON

### Diana Ross

Graydon Dyck  
Acrylic with Wax Pencil on Paper  
Gift of Bob Ceh, Wasaga Beach, ON

### Barak Obama

Graydon Dyck  
Acrylic with Wax Pencil on Paper  
Gift of Bob Ceh, Wasaga Beach, ON

### Marilyn Monroe

Graydon Dyck  
Acrylic with Wax Pencil on Paper  
Gift of Bob Ceh, Wasaga Beach, ON

### Red Blue Slippen 1/3

Graydon Dyck  
Acrylic with Wax Pencil on Paper  
Gift of Bob Ceh, Wasaga Beach, ON

### Red Blue Slippen 2/3

Graydon Dyck  
Acrylic with Wax Pencil on Paper  
Gift of Bob Ceh, Wasaga Beach, ON

### Red Blue Slippen 3/3

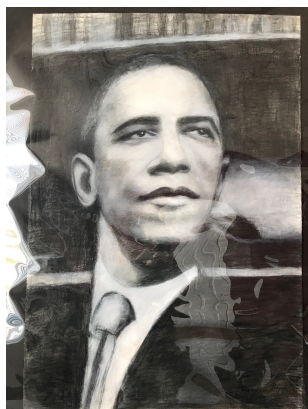
Graydon Dyck  
Acrylic with Wax Pencil on Paper  
Gift of Bob Ceh, Wasaga Beach, ON

### Abstract

Graydon Dyck  
Acrylic with Wax Pencil on Paper  
Gift of Bob Ceh, Wasaga Beach, ON



*Diana Ross, Graydon Dyck*  
Gift of Bob Ceh, Wasaga Beach, ON



*Barak Obama, Graydon Dyck*  
Gift of Bob Ceh, Wasaga Beach, ON

# Notable New Acquisitions: LAC Collection

**Norval Morrisseau (1932-2007)** was a Canadian indigenous artist who is considered the grandfather of contemporary indigenous art in Canada and a key figure in the indigenous art movement.

Also known as the “Picasso of the North”, Morrisseau created a unique style that inspired a new art movement and founded the Woodlands School of Art as well as a prominent member of the “Indian Group of Seven.”

Morrisseau was the recipient of many awards and accolades, including the Order of Canada, as well as a Lifetime Achievement Award given posthumously in 2008. Morrisseau is also the only Native artist to have a solo exhibition held by the National Gallery of Canada.

In 2021, the LAC acquired 6 colour serigraph prints of Norval Morrisseau’s work through careful selection.

## **Sermon to the Birds**

Norval Morrisseau  
Coloured Serigraph Print

## **Children of Light and Sound**

Norval Morrisseau  
Coloured Serigraph Print

## **We Are The Gods Within Ourselves**

Norval Morrisseau  
Coloured Serigraph Print



***Fish and Loons of Lake Nipigon***

Norval Morrisseau  
Coloured Serigraph Print

## **Woodland Creatures**

Norval Morrisseau  
Coloured Serigraph Print

## **Bird Speaks to these Children**

Norval Morrisseau  
Coloured Serigraph Print

## **Fish and Loons of Lake Nipigon**

Norval Morrisseau  
Coloured Serigraph Print



***Woodland Creatures***

Norval Morrisseau  
Coloured Serigraph Print

---

## **SOURCES**

<https://www.officialmorrisseau.com/about.aspx>



# Notable New Acquisitions: LAC Collection



**Lunenburg Harbour**  
Donald Waffle  
Acrylic on Board

## **Lunenburg Harbour**

Donald Waffle

Acrylic on Board

Generous gift of Don Waffle, Leamington, ON.

## **Boulangerie French Bakery Saturday Market – Annapolis Royal N.S**

Donald Waffle

Acrylic on Board

Generous gift of Don Waffle, Leamington, ON.

## **The Fruit Wagon Near Harrow**

Donald Waffle

Acrylic on Board

Generous gift of Don Waffle, Leamington, ON.

## **Ontario Sleigh-ride**

Donald Waffle

Acrylic on Board

Generous gift of Don Waffle, Leamington, ON.

## **Men in Conversation Saturday Market – Annapolis Royal N.S.**

Donald Waffle

Acrylic on Board

Generous gift of Don Waffle, Leamington, ON.



**Boulangerie French Bakery Saturday Market – Annapolis Royal N.S.**  
Donald Waffle  
Acrylic on Board



**Ontario Sleigh-ride**  
Donald Waffle  
Acrylic on Board



**Men in Conversation Saturday Market – Annapolis Royal N.S.**  
Donald Waffle  
Acrylic on Board

## Notable New Acquisitions: LAC Collection



**Untitled**  
Andrew Prod  
Sculpture

**Untitled**

Ray Cohen

Watercolour

*Generous gift of John Haynes, Kingsville, ON.*

**Untitled**

Douglas Pas R

Photography

*Generous gift of John Haynes, Kingsville, ON.*

**Trickle of Life II**

Lorraine W. Trenholm

Pastel on Paper

*Generous gift of John Haynes, Kingsville, ON.*



**Homestead at Revelstoke**  
Margaret Shelton  
Print

**Untitled**

John Haynes

Mixed Media

*Generous gift of John Haynes, Kingsville, ON.*

**Homestead at Revelstoke**

Margaret Shelton

Print

*Generous gift of John Haynes, Kingsville, ON.*

**Men Going Hunting for Kangaroo**

Audrey Nungarrhi

Acrylic on Canvas

*Generous gift of Norma Panton, Cochrane, AB.*

**Untitled Ship**

Martyn Richardson Makrill

Lithograph on Paper

*Generous gift of Norma Panton, Cochrane, AB.*

**Untitled**

Andrew Prod

Sculpture

*Generous gift of Paul Couillard, Toronto, ON.*



**Untitled**  
John Haynes  
Mixed Media



# VIRTUAL COLLECTION



In 2020, the LAC was awarded a Virtual Gallery Grant by the Windsor Essex Community Foundation, which not only helped in the creation of our Virtual Gallery, but also in the digital archiving of the LAC's Permanent Collection. The new virtual gallery and virtual permanent collection allows the LAC to accommodate those with disability or transportation issues who do not have traditional means to visit art galleries, museums or cultural spaces such as the LAC. Additionally, Covid-19 meant educators and students have been unable to participate in tours of the LAC. With our virtual programming, we are now able to provide the experiences that teachers are looking for in online platforms.

In 2021, we were able to expand our virtual permanent collection to include all LAC owned works, as well as The Henry Collection, which is owned by the Municipality of Leamington and stored and curated by the LAC.



A sample of The Henry Collection, viewable online.



# Accolades & Professional Services



## The Best of Windsor Essex Awards

The Best of Windsor Essex Awards are a social media campaign organized by Tourism Windsor Essex Pelee Island in an effort to learn from locals where they want to dine, shop, play and stay. We recognize where locals like to go, so do visitors. This campaign is designed to highlight some of the best of our region and share it with the close to 5 million tourists who visit our region annually.

**Once again in 2021, the Leamington Arts Centre was nominated for the Tourism Windsor Essex Pelee Island's 6th Annual BEST OF WINDSOR ESSEX awards.**

**The LAC was a finalist for the ARTS & ENTERTAINMENT – BEST ART GALLERY OR ART SPACE award.** The other nominees were: the Art Gallery of Windsor (winner), Art Lab Windsor, Artcite Windsor, and the Urban Art Market.

## Chad Riley

### Activities & Boards

LAC Director/Curator Chad Riley served his 5<sup>th</sup> year of volunteer service as Board Member for the Uptown Leamington BIA. The Uptown Leamington Business Improvement Area (BIA) represents over 200 businesses in the Uptown area. The BIA's role is to develop the uptown core through beautification, general improvements and upgrades, promotion, events and marketing.

In 2021, Riley also participated as a judge for the ArtsBuild Ontario Awards and was a guest speaker at the Art Society of Kingsville's Annual General Meeting.

### International Society of Appraisers (ISA)

Riley is also a member of the International Society of Appraisers (ISA) having completed the core course and maintaining his credentials. Through the LAC, Riley provides appraisal consultations and services to Windsor and Essex County. He recently completed the Uniform Standard of Professional Appraisal Practice (USPAP), a course designed to recognize ethical and performance standards for the appraisal profession.

## Sharon Suitor

Sharon Suitor joined the Leamington Arts Centre in March of 2020 as Visitor Services & Programs Coordinator. She has a strong interest in the Arts and enjoys painting and attending art galleries, museums and arts festivals. Sharon has a passion for community development, and for working in a not-for-profit organization, making her a perfect fit for the LAC.

### Education & Activities

A Leamington resident, Sharon holds a Masters in Communications and Social Justice from the University of Windsor, a B.A. in Communications, Media, and Film and a post graduate certificate in Marketing Management from Fanshawe College. Her previous work experience includes a Film Studies Research Assistantship and Graduate Teaching Assistantships at the University of Windsor. Sharon also has on-going volunteer experience with the Windsor Home Coalition.



## International Society of Appraisers



Chad Riley, Director/Curator is one of approximately 45 appraisers in Canada. As such, the LAC offers a variety of fine art appraisal services for various functions and all our appraisal reports follow International Society of Appraisers (ISA) standards for appraisal writing practice as well as USPAP 2020-21. If you require a formal written appraisal report for insurance or a donation, you are in the right place! The International Society of Appraisers (ISA) is the largest of the professional personal property appraisal associations representing the most highly trained and rigorously tested independent appraisers in the United States and Canada.

### Appraisal Services Offered

Written appraisal reports for charitable donations + acquisitions, insurance coverage + claims, resale + liquidation, identifying most suitable markets for resale of fine art, as well as description, identification and arranging authenticity when required.

### Types of Property Appraised

Fine art such as paintings, lithographs, drawings, photographs, sculpture.

### About the ISA

The International Society of Appraisers (ISA) is the largest of the professional personal property appraisal associations representing the most highly trained and rigorously tested independent appraisers in the United States and Canada. We are a not-for-profit, member-driven association, formed to support our member needs and to enhance public trust by producing qualified and ethical appraisers who are recognized authorities in personal property appraising.

ISA's membership is diverse and collegial. Our members include many of the country's most respected appraisers, consultants, curators, scholars, gallerists, estate liquidators, auctioneers, and dealers. We pride ourselves on a strong national network of appraisers who draw on highly specialized knowledge, skill, and experience, serving as a resource to our fellow members in a spirit which is unparalleled. Personal property appraising is an evolving profession, and the ISA courses continue to advance, reflecting the most sophisticated knowledge and technology available. Additional courses are in the process of development, including a state-of-the-art, comprehensive online learning platform.



## Training & Development



### Smart Serve

To ensure patrons receive safe and quality service, new LAC staff, Sharon Sutor, completed the online Smart Serve course. Chad Riley was already certified.

**The Smart Serve** Responsible Alcohol Beverage Sales & Service Training Program is approved by the Alcohol and Gaming Commission of Ontario (AGCO) as the only responsible alcohol training program for Ontario. Smart Serve is a dedicated advocate for a safer and healthier Ontario. It is required by law to sell or serve alcohol in Ontario. This program is designed for servers, bartenders, hostesses, food and beverage managers, or anyone who is involved in an event where alcohol is served.

### Uniform Standards of Professional Appraisal Practice (USPAP) 2020-2021

Chad Riley completed the seven-hour, mandatory USPAP course, required for all ISA appraisers. The Uniform Standards of Professional Appraisal Practice (USPAP) are the generally recognized ethical and performance standards for the appraisal profession in the United States. USPAP was adopted by Congress in 1989, and contains standards for all types of appraisal services, including real estate, personal property, business and mass appraisal. Compliance is required for state-licensed and state-certified appraisers involved in federally-related real estate transactions. USPAP is updated every two years so that appraisers have the information they need to deliver unbiased and thoughtful opinions of value.





## Visitor Statistics

Art galleries are commonly one of the main tourism destinations for communities and the LAC is no different for Leamington. As visitor tracking reports the LAC is a major destination and when visitors are in town they also frequent other establishments and generate economic development.

**Over 2000\* Visitors from Windsor and Essex County and surrounding regions visited the Leamington Arts Centre in 2021.**

\*2021 visitor stats were over 12,000. 2021 was affected by COVID-19 and lockdown orders.



**4.3/5 Rating on Facebook**  
**2832 Followers on Facebook**



**4.8/5 Star Rating on Google**



**1374 Followers on Instagram**



**431 Mailchimp Subscribers**

*"I always enjoy my visits the gallery. There is a nice variety of pieces , lots of interesting things going on and the staff has always been friendly and helpful."*

*- Joel Westlake*

*"This is a great facility to promote art and crafts. Even though I don't live in Leamington I will be visiting often since my sister in law has recently moved here. I became a member and now have my wire art in their lovely gift shop. Leamington should be proud to have such a nice Arts Centre!"*

*- Patti Wheeler*

*"I entered an amateur photo contest and was pleasantly surprised at how amazing this little place was. Not only is the art amazing they also carry other things from local artists. Most definitely worth a trip to check it out"*

*- Sherri Barris*

*"Definitely worth the stop in if you're in Leamington, actually it's worth a drive to check it out too! Nice gallery, with a small local artisan section that also sells wine by the glass. There's an art supply section as well, nice supplies. The Director, Chad really took the time to show us around and answered a lot of questions we had regarding the art on display and becoming members of the LAC. If you haven't been you should really go, great for kids too!"*

*- Sarah Trudell*



## Venue Rentals

**\*Due to COVID-19 most group gathering and venue rentals were placed on hold in 2021. In 2019, the LAC was host to over 200 private, corporate, and public venue rentals.**

The LAC is proud to provide a gathering place for the community's programming needs and special events. Our space is available to individuals, businesses, community groups and organizations for private social events such as baby showers, bridal showers, wedding ceremonies, book launches, meetings, educational and business events, and more.

The beautiful main floor galleries offer large spaces for entertaining and socializing with plenty of room for hors d'oeuvres and cocktail tables, buffets, receiving tables, or seated catered dining. It's the perfect unique setting for showers, weddings, anniversaries, book launches, CD releases and more. The galleries are available for facility rentals after 5pm any day of the week including weekends. *\*some exceptions may apply.*

The large 2nd floor community room is the perfect setting for educational programs, seminars, workshops, meetings and conferences. It comes equipped with a 100" projector screen, tables, and seating for up to 70. The community room is available all hours any day of the week, including weekends.

The lower-level studio space is a great space to get messy with paints, crafts and hands-on work. Studio space is available monthly for artists and arts instructors to hold classes and workshops. It is equipped with its own clean up station, tables, chairs and washroom. It is available all hours any day of the week including weekends.







## Venue Rentals

In addition to exhibition space in our galleries, the LAC also offers office space, meeting room space as well as workshop and studio space, plus, it's fully accessible! In 2021, several local business made use of the LAC. Revenues from facility rentals aid in offsetting operating costs so more funds can be used for programing and events. The LAC truly is a building for the community.

In 2021, some of these businesses and organizations who utilized the space included: the Uptown Leamington BIA, the Church of Christ, and the Leamington Chamber of Commerce.

### Resident Businesses



New office located in downtown Leamington. Book an appointment today, call 519-995-0057 .



Open by Appointment Only

A certified (A+, N+, MCP, MCSE) specialist providing high quality certified refurbished laptops and desktops.





## **Statement of Revenues & Expenditures**

---

### **Report to the Members**

The accompanying financial statements of the South Essex Arts Association which comprise the statements of the financial position as of December 31, 2021 have been externally reviewed by Albuquerque Accounting.

---

### **Board of Director's and Treasurer's Responsibility for the Financial Statements**

The SEAA Treasurer and LAC Director are responsible for the preparation and fair presentation of these financial statements as approved by the Board of Directors in accordance with Canadian accounting standards for not-for-profit organizations, as shown herein and prepared by Albuquerque Accounting.

---

### **Opinion**

In the Board's opinion, the financial statements present fairly, in all material respects, the financial position of the South Essex Arts Association as at December 31, 2021 and the results of its operations and its cash flows for the year ended December 31, 2021 and in accordance with Canadian accounting standards for not-for-profit organizations.

**South Essex Arts Association**

**Financial Statements  
December 31, 2021**

## COMPILATION ENGAGEMENT REPORT

### To Management of South Essex Arts Association,

On the basis of information provided by management, we have compiled the balance sheet of South Essex Arts Association as at December 31, 2021, and the statement of income and retained earnings for the year then ended, and Note 1, which describes the basis of accounting applied in the preparation of the compiled financial information and, if applicable, other explanatory information.

Management is responsible for the accompanying financial information, including the accuracy and completeness of the underlying information used to compile it and the selection of the basis of accounting.

We performed this engagement in accordance with Canadian Standard on Related Services (CSRS) 4200, Compilation Engagement, which requires us to comply with relevant ethical requirements. Our responsibility is to assist management in the preparation of the financial information.

We did not perform an audit engagement or a review engagement, nor were we required to perform procedures to verify the accuracy or completeness of the information provided by management. Accordingly, we do not express an audit opinion or a review conclusion, or provide any form of assurance on the financial information.

Readers are cautioned that these statements may not be appropriate for their purposes.

**HICKS, MacPHERSON, IATONNA  
& DRIEDGER LLP**

*Hicks, MacPherson, Iatonna  
& Driedger LLP*

Chartered Professional Accountants  
Licensed Public Accountants

Leamington, Ontario  
April 6, 2022



**South Essex Arts Association**

**Balance Sheet  
as at December 31**

	2021	2020
<b>Assets</b>		
<b>Current</b>		
Cash	\$ 125,726	\$ 73,663
Restricted funds	20,540	16,995
Prepaid expenses	338	-
Art Supply Shop inventory	18,714	7,995
Government assistance receivable	5,617	14
	<b>\$ 170,935</b>	<b>\$ 98,667</b>
<b>Liabilities</b>		
<b>Current</b>		
Accounts payable and accrued liabilities	\$ 9,663	\$ 6,543
Deferred revenue	4,923	1,472
	<b>14,586</b>	<b>8,015</b>
<b>Long Term Debt</b>		
	<b>60,000</b>	<b>40,000</b>
	<b>74,586</b>	<b>48,015</b>
<b>Net Assets</b>		
Net Assets - Restricted	20,538	16,995
Net Assets - General	75,811	33,657
	<b>96,349</b>	<b>50,652</b>
	<b>\$ 170,935</b>	<b>\$ 98,667</b>

**South Essex Arts Association**  
**Statement of Revenue and Expenses**  
**for the years ended December 31**

	2021	2020
<b>Revenue</b>		
Art appraisals	\$ 725	\$ 1,400
Events	6,535	2,788
Exhibits and art sales	11,249	5,557
Sponsorships and donations	82,141	53,981
Art Supply Shop	8,445	5,339
Market Place	657	663
Market Place sales	2,486	3,841
Rental	15,026	15,023
Grants	84,274	71,083
Government subsidies	44,040	29,788
Memberships	3,428	2,927
Other revenue	3,090	57
	<b>262,096</b>	<b>192,447</b>
<b>Expenses</b>		
Art appraisals	750	1,140
Events	163	368
Exhibits and art	16,010	5,023
Art donations	29,220	38,795
Art Supply Shop	5,508	3,809
Market Place	3,454	3,928
Business and office	33,216	20,783
Photocopier	2,283	2,402
Building	25,079	11,338
Wages	99,394	77,556
Bank and processing fees	1,322	632
Workshops	-	520
	<b>216,399</b>	<b>166,294</b>
<b>Excess Revenue Over Expenses for Year</b>	<b>\$ 45,697</b>	<b>\$ 26,153</b>

**South Essex Arts Association**

**Statement of Net Assets  
for the years ended December 31**

	Net Assets General	Net Assets Restricted	2021 Total Net Assets	2020 Total Net Assets
Balance, Beginning of Year	\$ 33,657	\$ 16,995	\$ 50,652	\$ 24,499
Revenue Over Expenses	42,154	3,543	45,697	26,153
Balance, End of Year	\$ 75,811	\$ 20,538	\$ 96,349	\$ 50,652



**South Essex Arts Association**  
**Notes to Financial Statements**  
**for the year ended December 31, 2021**

---

**1. Basis of Accounting**

The basis of accounting applied in the preparation of the balance sheet of South Essex Arts Association as at December 31, 2021, and the income statement for the year then ended, reflects cash transactions with the addition of:

- Government assistance based on applicable period
- Prepaids recorded based on future benefit
- Accounts payable and accrued liabilities
- Inventory accounted for at cost
- Deferred revenue based on future delivery of service

**2. Incorporation**

The company is incorporated without share capital under the laws of the Province of Ontario.

**3. Permanent Collection**

Donations to the collection during the year included 16 works of art totalling \$29,220.

**4. Comparative figures**

Prior year figures were prepared internally by management. Certain comparative figures have been reclassified to conform with the current years presentation.



Your Interest and Support in the *South Essex Arts Association* helps build a richer and brighter community. Thank you!



The LAC is a proud member of the OAAG offering reciprocal benefits to over 80 institutions. [www.oaag.org](http://www.oaag.org).



The LAC is a member of Volunteer Canada and has adopted their code and we are committed to demonstrating our value in volunteerism.



The LAC is a not-for-profit organization reliant on community support.



**DON WAFFLE**



**SUSAN ROSS**

The SEAA/ LAC recognizes the generous support of the Municipality of Leamington and the Southpoint Sun.

**Cover Images:**

Annual General Meeting, 2020  
U21: Members Show and Sale, 2021

Leamington Arts Centre | 72 Talbot Street West Leamington, ON N8H 1M4  
519.326.2711 [info@leamingtonartscentre.com](mailto:info@leamingtonartscentre.com)