



Leamington Arts Centre

Create. Sustain. Celebrate.

South Essex Arts Association
est. 1971

THE SOUTH ESSEX ARTS ASSOCIATION IS DEDICATED
TO CREATING AND SUSTAINING A CELEBRATION OF THE
HUMAN SPIRIT THROUGH THE NURTURING OF THE ARTS
WITHIN OUR COMMUNITY.

www.leamingtonartscentre.com
info@leamingtonartscentre.com

72 Talbot Street West
Leamington, ON
N8H 1M4
Canada

Gallery Hours:

Tues - Fri: 10am - 4pm
Sat: 12pm-4pm
Sun & Mon: Closed



www.facebook.com/leamingtonartscentre



Leamington Arts Centre

Create
Sustain
Celebrate

SOLO EXHIBITION SUBMISSIONS

create
sustain
celebrate
the
arts

dedicated
to nurturing
the spirit

The LAC recognizes the generous support of
the Municipality of Leamington.



ABOUT THE LAC

The Leamington Arts Centre (LAC) is located in the heart of South Western Ontario's beautiful uptown Leamington in one of the town's many wonderful heritage buildings. The LAC is a state of the art facility which offers three large galleries with over 250 linear feet of continuous wall space and 2000sq/ft of floor space, as well as Erie Quest Heritage Ship Wreck museum, a gift shop, art classes, workshops and meeting spaces. The LAC is one of the area's paramount places to view modern art with an emphasis on local and aspiring artists and artisans.

Registered Charitable Not For Profit Organization No. 11915 7543 RR 0001

WHY EXHIBIT AT THE LAC?

- Low commission, 25% for members and 30% for non-members.
- Staff supervision Tuesday through Friday from 10am and 4pm and Saturday from 12pm to 4pm. (And extended Summer Hours)
- LAC provides many announcements for upcoming artist exhibition - the LAC website, media releases, e-blasts, news letters, calendars and social media
- LAC is fully secured and protected with motion sensors and infrared camera surveillance.
- LAC and its contents are fully insured.
- LAC is climate controlled and monitored.
- LAC is fully accessible.
- Second floor offers meeting room for small gatherings, classes, seminars, work shops, meetings and more.

SEAA/LAC MEMBERSHIP

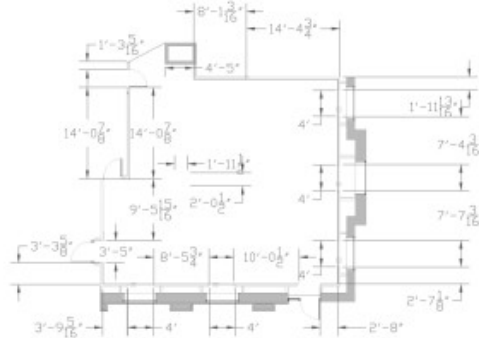
- Members receive a 5% discount on commission of sales.
- Membership forms can be obtained online at www.leamingtonartscentre.com or in person at the LAC.
- Artist Membership - \$25, General Membership - \$30, Family Membership - \$40, Student - \$20, Club, organization or small business - \$50.
- Exhibiting artists and space renters do not need to be SEAA members; however, it is encouraged and greatly appreciated.

MONTHLY EXHIBIT RENTAL RATES

- Main gallery: \$295
- Second gallery: \$195
- Middle gallery: \$145

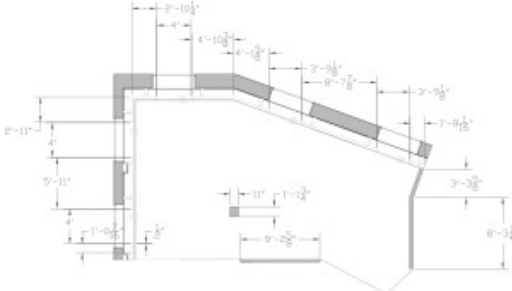
Main Gallery

123 linear ft / 924 square ft



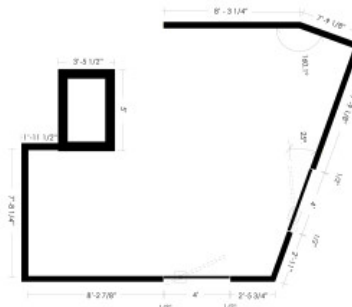
Second Gallery

83 linear ft / 684 square ft



Middle Gallery

60 linear ft / 225 square ft



Please complete the following:

First Name

Last Name

Address

City/Town

Postal Code

Phone

E-mail

Mediums

Include with your Submission

- Artist statement and/or bio
- Artist resume or curriculum vitae
- 5-10 examples of artwork that you wish to display (digital format only). Website link acceptable.
- Comprehensive description of each image stating title, medium, price, year and size.

Digital Specifications

1. Images must be in jpeg or PDF file format
2. Resolution of 1024 pixels on the longest side
3. Mailed or delivered to the LAC on a CD/DVD.
4. All images must be accompanied by a listing of title, date, medium and size.
5. Artist statement must be in PDF or .doc(x) file format only.

EXHIBITION SELECTION

The Gallery Exhibition Committee for the Leamington Arts Centre meets several times a year to review artist's submission portfolios and selects candidates for exhibit at LAC (and/or other venues). Once the Exhibition Committee has reviewed your submission you will promptly receive a written response.

Thank You!